

# Poultry Markets

## Weekly New York Egg Market

	From Friday, Sept. 4 to Sept. 11				
	Fri.	Mon.	Tues.	Wed.	Thurs.
<b>WHITE</b>					
Jumbo	88	H	88	88	86
Ex Large	83		83	83	81
Large	79	O	79	79	77
Mediums	74		74	74	72
Pullets	51	L	51	51	51
<b>BROWN</b>					
Jumbo	104	I	104	104	104
Ex Large	95		95	95	95
Large	91	D	91	91	91
Mediums	Unquoted				
Pullets	Unquoted				
Peewees	Unquoted				
<b>Off Grade</b>					
Large	70	A	70	70	70
Checks	44	Y	44	44	44

Tone: Large barely steady. Balance medium easy.  
Copyright 1981 by Urner-Barry

## N. E. Weekly Shell Egg Report

Tuesday, Sept. 8  
Report supplied by USDA  
Prices paid per dozen Grade "A" Brown eggs in cartons delivered to retail stores:

	Ex. Large	Large	Medium	Small
MASS.X	96-103	93-100	83-91	51-58
Mostly	98-101	95-98	85-88	53-56
N. HAMP.	91-97	88-94	78-84	46-52
Mostly	93-96	90-93	80-83	48-51
R.I.	100-101	98-99	87-88	55-56
VERMONT	98-104	95-102	85-89	-
Mostly	100-100	97-98	86-87	-
MAINE	98-99	95-96	85-86	53-54

X Includes Central and Western Sections only.

## Baltimore Eggs

Wednesday, September 9  
Report supplied by USDA  
Demand slow to fair. Supplies fully adequate.

Cartoned Eggs: Prices to retailers, state graded (min one case sale) white.

Grade A Large	79-84
Grade A Medium	74-79



Copyright 1980 by Lancaster Farming  
P.O. Box 366 - Lititz, PA 17543  
Office: 22 E. Main St., Lititz, PA 17543  
Record-Express Office Building  
Phone: Lancaster 717-394-3047  
or Lititz 717-626-1164

Robert G. Campbell, Publisher  
Sheila M. Miller, Editor  
Dick Anglestein, Staff Writer  
Debra L. Koontz, Home Editor  
Donna M. Tommelleo, Staff Writer

**CORRESPONDENTS**  
M.H. Gitt, Adams County  
Biglerville, 717-677-9440

Laurel Shaeffer, Berks County  
Bernville

Jane Bresee, Bradford County  
Ulster 717-358-3346

Beth Hemminger, Cumberland County  
Newville 717-486-5322

Sally B. Bair, Lancaster County  
Columbia 717-285-4926

Susan Kauffman, Lancaster County  
Peach Bottom 717-548-3131

Joyce Bupp, York County  
Seven Valleys

Subscription Price:  
\$7.50 per year; \$13.00 - 2 years  
\$12.00 per year outside of:  
PA, NJ, MD, DE, NY, VA & WV

Established November 4, 1955  
Published every Saturday  
by Lancaster Farming, Lititz, PA  
Second Class Postage paid at  
Lititz, PA 17543 USPS 304-040

For address change form or new  
subscription see Classified Section.  
Members of Newspaper Farm Editors Assn.,  
Pa. Newspaper Publishers Association,  
and National Newspaper Association.

## Delmarva Poultry

Wednesday, September 9  
Report supplied by USDA

R.T.C. movement for immediate delivery very good on both parts and whole birds. Slaughter schedules very heavy at all plants. Today's L.T.L. asking prices fully steady at 48-51 on U.S. Grade A. Advance interest generally slow in developing for next week as traders await further market developments. Live supplies ample at weights mostly heavier than desired. Undertone steady but undetermined for next week.

Estimated 9/9 1876; Actual 9/2 1816; Actual 9/7 None; Average Weights 9/7 None; 8/31 4.24.

## Philadelphia Eggs

Wednesday, September 9  
Report supplied by USDA

Prices unchanged. Cartoning demand fairly good for current needs. Offerings fully adequate overall on all sizes. Undertone steady.

Prices to Retailers: Sales to volume buyers, consumer grades white eggs in cartons delivered store door.

A Extra Large 78½-84; A Large 77½-80; A Medium 71½-74.

## Eastern Pa. & N.J. Poultry

Wednesday, September 9  
Report supplied by USDA

Prices light type hens mostly unchanged. Demand fair for limited but adequate farm offerings. Offerings of heavy type adequate for a light interest.

Prices Paid at Farm:  
Light Type Hens: 6-7½, mostly 7-7½.

F.O.B. Plant: 9-10, mostly 9½.  
Heavy Type Hens: TFEWR.

## Fogelsville Poultry

Fogelsville, Pa.  
Tuesday, September 1  
Report supplied by USDA

HENS, LIGHT TYPE: range 4-12, mostly 12.

HENS, HEAVY TYPE: range 8-28, mostly 23.

PULLETS: range 48-58, mostly 58.

ROASTERS: range 58-59, mostly 58.

FRYERS: range 30-48, mostly 48.

DUCKS: range 85-120, mostly 120.

DRAKES: range 85-120, mostly 120.

RABBITS: range 30-80, mostly 65.

GUINEAS: range 198-210, mostly 198.

PIGEONS (PER PAIR): range 190-210, mostly 210.

JUMBO SQUAB: range 4.00-4.95, mostly 4.95.

TOTAL COOPS SOLD: 310.



**TOP OF THE HOG MARKET**  
DANVILLE LIVESTOCK MARKET  
OLD ROUTE 11, DANVILLE, PA 17821  
717-275-2880

**HORSE SALE HELD 3rd SATURDAY OF THE MONTH**

Market your cattle & hogs the auction way.  
Sale every Monday 2 P.M.  
Melvin M. Lehman (Owner)

## Nest Run Eggs

Prices are from Egg Clearinghouse, Inc., (ECI) Durham, N.H. and reflect trading prices for gradable nest run eggs (GNR) on ECI, a nationwide trading center for producers, packers and marketers. GNR eggs are classified by weight in 30-dozen cases, and traded in lots of either 300 or 750 cases. Prices are FOB buyers dock, and are computed Tuesday and Thursday of each week. This week's prices for each classification were:

Classification	Net Weight Per Case	Sept. 8 Tuesday	Sept. 10 Thursday
Class 1 - Large	48 lbs.	61	57
Class 2 - Large	45 lbs.	60	57
Class 3 - Medium	42 lbs.	57	53
Class 4 - Small	39 lbs.	43	41
Breaking Stock	48 lbs.	52	52
Checks	48 lbs.	47	47

## Heinsey's Poultry Market

Root's, East Petersburg  
Tuesday, September 8

Report supplied by auction

MUSCOVY DUCKS, DRAKES: range 1.00-1.22.

MUSCOVY DUCKS, HENS: range .80-1.02.

PULLETS: 6-8 lbs. range .52-.58.

RED FOWL: 4-5 lbs. range .20-.26.

RED FOWL: 5-6 lbs. range .22-.30.

CROSSBRED FOWL: 5-8 lbs. range .20-.32.

CROSSBRED ROOSTERS: 4-6 lbs. range .52-.70.

CROSSBRED ROOSTERS: 7-10 lbs. range .40-.58.

GUINEAS: range 1.52-1.85.

GEESE: 8-10 lbs. range .20-.46.

PIGEONS: range .50-.85 ea.

WHITE PIGEONS: range 2.25-3.10 ea.

RABBITS: 4-6 lbs. range .24-.46.

RABBITS: 7-10 lbs. range .24-.38.

PEKING DUCKS: range .40-.52.

BANTY ROOSTERS: range 2.50-3.75 ea.

BANTY HENS: range .50-1.00 ea.

GUINEA PIGS: range .50-2.75 ea.

GOATS: range 30.00-55.00.

KID GOATS: range 19.00-28.00.

TOTAL COOPS SOLD: 615.

## Shenandoah Valley Livestock

Harrisonburg, Va.  
Saturday, September 5

Report supplied by auction

STOCKER, FEEDER, AND SLAUGHTER CATTLE: Good

Light Steer Calves 59.00-64.50;

Medium 55.00-58.50; Plain 50.00

and down; Good Heavy Steers 55.00-60.50;

Plain 45.00 and down; Holstein Steers 40.00-44.00;

Good Light Heifer Calves 50.00-55.95;

Medium 45.00-49.50; Plain 40.00 and down;

Good Heavy Heifers 51.00-56.00;

Medium 47.00-50.50; Plain 42.00

and down; Slaughter Cows 38.75-44.00;

Utilities 32.50-38.50; Cutters & Canners 31.50

and down; Slaughter Bulls 56.00 and down;

Slaughter Bulls 47.50-56.00.

CALVES: Veal Calves 72.00 and down;

Baby Calves 115.00 and down.

SHEEP & LAMBS: Choice Blue O 51.00;

Good Red O 45.00; Feeder Lambs 35.00-50.00;

Slaughter Ewes 17.00 and down;

Stock Ewes 70.00 and down.

HOGS: Top 49.00; Sows 49.00 and down.



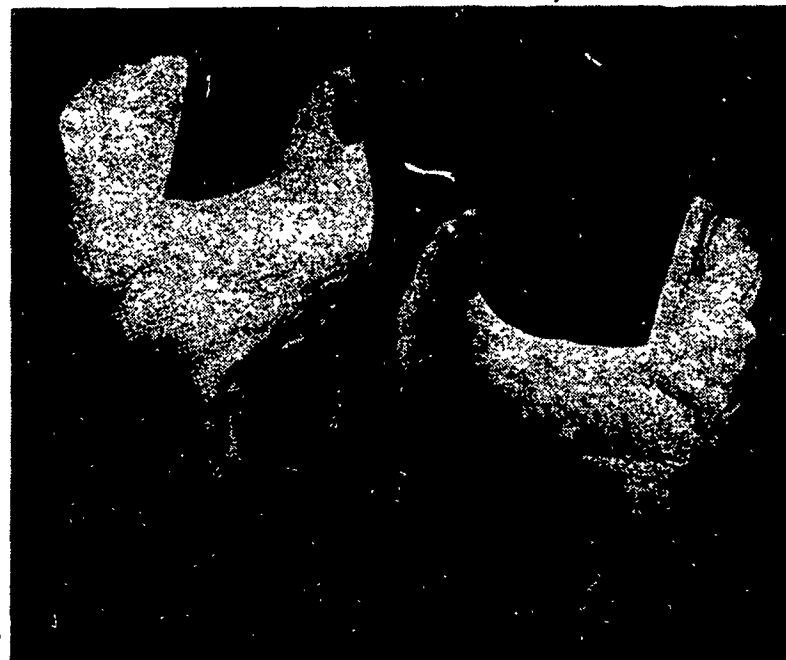
**Two Ways To Improve Your Profit Picture XL & DK**

Two layers with distinctly different characteristics... From two separate research programs.

You don't have to buy from two different companies to get the two top layers on the market.

The XL shows excellent production under many management conditions. The DK responds best to finely tuned, close management.

DEKALB Layers are bred to possess the economic traits most applicable to your operation. You do have a choice... The high productivity XL or the high efficiency DK.



**CONTACT:**

**Mayer's CHICKS, INC.**

DEKALB BROWN & WHITE EGG LAYERS

Quakertown, PA 18951  
(215) 536-3155

HUBBARD WHITE MT. BROILERS