

# Pa. steel shot zones continue

Lancaster Farming, Saturday, September 12, 1981—A29

HARRISBURG — The U.S. Fish and Wildlife Service has notified the Pennsylvania Game Commission that steel shot zones for waterfowl

hunting in the state will continue on a permanent basis. Steel shot has been required since 1977 to hunt ducks, geese

and/or coots in three locations in Pennsylvania. The areas are Crawford County, the Middle Creek Wildlife Management Area in

Lebanon and Lancaster Counties, and on and within 25 yards of the Susquehanna River between Northumberland and the

Maryland line. Prior to 1981, the steel shot zones were designated by the Fish and Wildlife Service on an "annual" basis,

meaning they were subject to change from year to year. Now, the three zones have been designated under "basic" rules, which

means they will continue from year to year, with only specific changes — such as adding or deleting a particular zone — having to be proposed as needed.

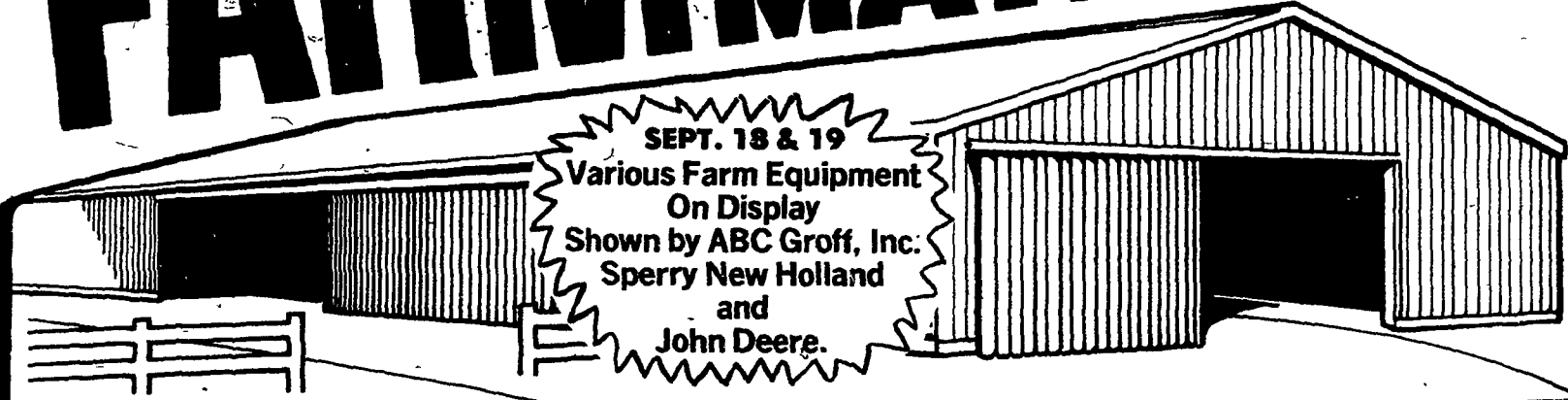
This procedural change was made to reduce the uncertainty associated with the demand for either lead or steel shot ammunition. Annual regulations also created a problem for the suppliers of ammunition, because shotshells are normally ordered during the winter for sale during the following fall.

An estimated 2 million waterfowl die each year in the nation after ingesting lead shotgun pellets.

# Wickes Lumber Your One Stop for FARM BUILDING MATERIALS

SEPT. 18 & 19

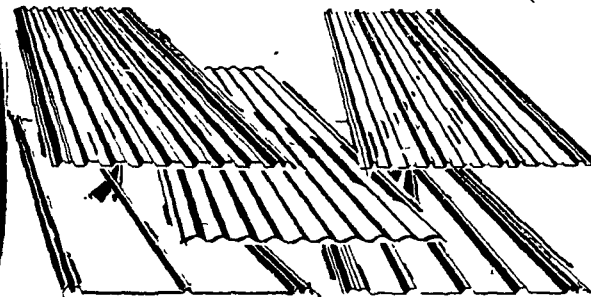
Various Farm Equipment  
On Display  
Shown by ABC Groff, Inc.  
Sperry New Holland  
and  
John Deere.



Wickes Lumber Can Provide You With The Highest Quality Materials In The Industry To Build Your Post & Frame Structure.

## PAINTED STEEL ROOFING/SIDING

Tops in durability! Heavy-gauge galvanized steel panels are maintenance-free and corrosion-resistant. Many colors and sizes are available at Wickes!



Complete Line of Accessories Available!

**5% OFF** Regular Price of Lumber, Roofing & Siding!

PRICES GOOD THRU SEPT. 26

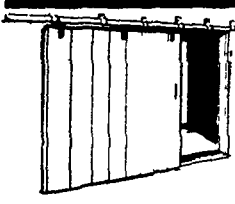
**END O' RAT**  
  
KILLS RATS and MICE  
**End O' Rat Co.**  
Rd 1 Box 668  
New Holland, PA 17557  
717-354-2340

**GEHART'S**  
**SANDBLASTING & RESTORATION INC.**  
Box 109AA, R.D. 1  
Abbottstown, Pa. 17301  
717-259-9868  
• Water Blasting  
• Chemical Cleaning  
• Brick & Stone Re-pointing & Waterproofing

**SPECIAL ON**  
**KNAPP SHOES**  
  
K29 6" Farm Shoe  
Reg. \$49.99  
Sept. Only \$39.99  
Send size or contact  
**Michael S. Lapp**  
Rt. 3 Box 235  
Quarryville, Pa. 17566

a beautiful way to save electricity  
The Enertech 1500 plugfree and renewable wind energy into your household electric system.  
Send \$1 for our 16-page brochure with details on sites, endurance tests, tax credits and more.

**the stoveman**  
Energy Efficient Centers  
458-8011  
© Copyright 1980 by The Stoveman Corp.



### BARN DOOR TRACK

You'll be on the right track when you choose our heavy-duty, galvanized unit. Easy to install... and a complete assortment of hardware is available at low sale prices!

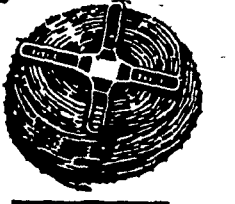
**20% OFF**  
REGULAR PRICE!



### STEEL 5 PANEL GATES

Select a superior entrance to your feed lots and pastures! All riveted construction plus galvanized panels for extra strength. Lightweight yet durable!

10'x48" ..... \$48.99  
12'x48" ..... \$59.99  
14'x48" ..... \$68.99  
16'x48" ..... \$71.99



### 4 PT. BARB WIRE

Confine your cows with our sturdy 15 1/2 gauge wire. Economical barbed wire is high in tensile strength and galvanized for long life.

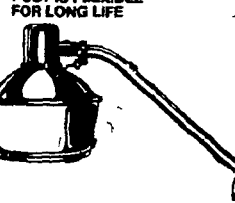
**\$22.99** Roll



### PERMA-POST (Poly-Vinyl Mix)

Perma Post, a new breed of fence-post developed to solve post problems forever. Perma-Post will outlive, outwork and outperform any wood, steel or fiberglass post  
**GUARANTEED AS LONG AS IT'S IN THE GROUND**

Reg. \$3.99  
**\$3.59**



### MERCURY VAPOR LIGHT

Security for your farm! 175 watt unit is easy to assemble and install. When light burns out just replace bulb, no need to wire

**\$30.99** ea.

SAVE \$3.96



### ALUMINUM ROOF COATING

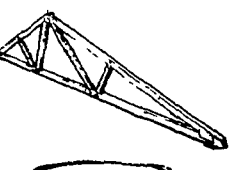
The perfect heavy-duty protection for your farm buildings! This asbestos-fibered aluminum coating rustproofs, waterproofs, seals & caulks. Tough yet always flexible.

**\$7.99** gal.

### END OF SEASON CLEARANCE 25% OFF Reg. Price on All Weather Treated Lumber

	8	10	12	14	16	18	20
2x4	1.74	2.25	2.81	3.41	3.94	—	—
2x6	2.90	3.62	4.43	5.08	5.99	—	—
2x8	4.01	5.10	6.90	7.28	8.33	9.33	12.20
2x10	—	—	9.21	—	12.29	—	—
4x4	3.79	5.24	6.64	—	9.56	—	—

SALE PRICES



### POLE BARN TRUSSES

Progressive farm owners save time and money by using our top-quality trusses. Delivery is made right to the job site... and our trusses are pre-engineered to meet your exact needs. For 2' o.c.

**\$24.99** 24' truss



### EXTERIOR RED BARN PAINT

Give your barns and sheds a fresh new look... Latex base is ideal for weathered surfaces. Unleaded for safety near animals. Long-lasting and blister-resistant. Red.

**\$26.99** 5 gal.  
Reg. 35.95

### TOP QUALITY WAFFERBOARD SHEATHING

Low priced, top quality, exterior grade. Solid core. Meets building code requirements. Use in or out!

**\$7.29** 4'x8'x7/16"

### TWO WAYS TO CHARGE IT AT WICKES

We have CREDIT available! Wickes' Charge Card and Home Improvement Plan.

### EXPERT INSTALLATION SERVICE

Wickes provides economical installation service for many products. Ask for details at your local Center!

When You Know Wickes, You Know How!



1 1/4 Mile North East of EPHRATA, PA. on Rt. 272  
PH: 717-733-6521 or Lanc. 717-394-9325  
Hours: Mon.-Thurs. 8 AM to 8 PM,  
Friday till 9 PM, Sat. till 5 PM

111 80