

# Charolais v-p joins NCA

HOUSTON, Tx. — Donald D. Nelson, presently serving as executive vice president of the American-International Charolais Association, has been appointed vice president in charge of policy coordination of the National Cattlemen's Association.

The appointment announced recently by W.T. (Dub) Berry, NCA executive vice president. Nelson's resignation from AICA

will become effective November 1, 1981. In his new position, he will be based in the Denver office of the NCA and will coordinate policy development and implementation with NCA's Washington office. He also will supervise staff members who work with NCA committees on public issues.

Nelson's successor has not been named yet. Nelson received a B.S. degree

from California State University, Fresno; an M.S. degree in animal science from the University of California at Davis; and a Ph.D. in animal nutrition from Ohio State University.

He served as executive vice president of AICA for 3½ years and president of Charolais Publications, Inc. for 1½ years. Before that, he was manager, agricultural operations, of the Bixby Ranch Co. in California.

Owners. J. Everett Kreider and Steve Petersheim Auctioneers.

SAT. SEPT. 12 - 10 A.M. Sale of Farm Machinery and Trucks. Located approx. 1 mi. east of Rt. 419 along Summer Mountain Road between Womelsdorf and Rehrersburg, Tulpehocken Twp., Berks Co., PA. Terms by Charles and Darlene Fair. Elton and Alvin Horning, Auctioneers.

SAT. SEPT. 12 - 11 A.M. Public Auction of 9 Acre Farmette and Personal Property. Located 4½ miles North-West of Manheim on Schumaker Road, between E-town Road and Mastersonville Road. Sale for Daisy R. Hosler. Marlin Hosler POA, Wilbur H. Hosler, Auctioneer.

SAT. SEPT. 12 - 12:30 P.M. Public Sale of Real Estate and Farm Equipment. Located at Shirley-Ayr Farm along Rt. 522, approx. 1 mile south of Mr. Union, PA at Stockmans Restaurant, Robert and Minerva Armour Owners. Ralph W. Horst Auctioneer.

SAT. SEPT. 12 - 9:00 A.M. Public Sale of Valuable Real Estate, Building Lots, Tools and Household Goods. Clay Twp., Located along Clay & Hopeland Rd., just off Rt. 322, Lanc. Co. PA. Terms by Harold M. Kleinfelder. T. Glenn Horst and Timothy G. Horst Auctioneers.

## PUBLIC AUCTION

### OF ANTIQUES & FURNISHINGS

At Country Club Estates Collins Ave. to Water View Lane, 1 mile south of Chestertown, MD.

**SATURDAY, SEPTEMBER 19**  
at 12:00 Noon

(50 Year Collection of Maryland & Penna. Antiques)

**ANTIQUES:** Pembroke table w/x stretcher & Marlborough feet (C1780), Early Queen Anne side chair w/h stretcher, round tilt top table w/snake feet, tea table, Hepplewhite chest of drawers, Early Victorian Love Seat w/casters, Bow Front Mahogany chest of drawers, Pine chest of drawers, Pine blanket chest, low chest of drawers, Pine tavern table, 2 Captains chairs, Chippendale wingback chair w/h stretcher, Adams mirror, Bulls Eye mirror w/eagle, Pine ice chest, shaving mirror, dry sink, Chippendale brass andirons, brass fender, brass tools, (2) single spool beds, maple candlestand, (2) Empire side chairs, wood pine buckets, pine stands, etc.

**FURNISHINGS:** Chippendale style maple and mahogany mirrors, leather arm chairs, Q.A. wing back chair, harvest table, 6 rush seat chairs, upholstered sofa, kingsize bed w/bookcase headboard, clock radio, T.V., sewing stand, end table, card table & chairs, 2 modern chairs.

**ANTIQUES:** Silver salt & peppers, silver salt holders w/liners, brass candlesticks, 11 pcs. amber glass, 16 thumb print goblets, painted trays, glass decanter, glass compotes, (4) glass/crass/marble base lamps, earthen crock, large Canton platter, English onion decorated platter, glass pattern pitcher, copper lustre pitchers, Bohemia glass decanter, pictures & frames, butter dishes. Sterling water pitcher, S.P. trys, pewter lamps, pewter ice bucket, Mallard duck lamp, 4 floor lamps, handpainted fireplace decoration, 6 Sterling demitasse spoons, bar glasses, 12 Adam plates, Federal mirror, 4 place settings of Wedgewood china w/gold & blue trim, glass plates & bowls, linens, steak knives, cloths, place mats, yard tools, etc.

**MR. & MRS. RICHARD CARVELL**  
Country Club Estates  
(Water View Lane)  
Chestertown, MD

H. Rudnick & Sons, Inc.  
Sales Managers & Auctioneers  
(301) 648-5601

(Chestertown Candlelight Walking Tour starts at 4:00 P.M.)

## PUBLIC AUCTION

### VALUABLE POULTRY & SWINE FARM — EQUIPMENT

**SATURDAY, SEPT. 26, 1981**

10:00 A.M.

Located 5 miles North of Manheim Borough, just off Rt. 72 ½ mile North of the Village of Elstonville.

Farm to be offered at 10:00 A.M. Consists of 121 acres M/L. 85 acres M/L tillable. Thereon erected 44'x360' broiler house 52,000 cpy. 18 mo. in use. Confinement for 120 sows, farrow to finish. 10,000 bu. corn bin and dryer, large bank barn, double 10 room dwelling with 2 baths, electric heat system, two natural streams on the premises.

80 acres corn on the stalk. Also straw equipment as follows, 1850 Oliver tractor, 1973 Ford pickup truck, Yaniman tractor and loader, Better Bilt tank spreader, John Deere 6 row 1250 cornplanter, 51' grain auger, Massey spreader, fertilizer drill, disc harrow, air compressor, grain moisture tester. Chisel plow, cultmulcher, wagon, baler, Rhino blade 3 pt. with hydraulic, pig feeders, portal hog corral, 3 pt. hog crate, battery charger. Also various misc items not mentioned.

You will want to inspect this farm for your convenience, please dial owner for appointment 717-665-2695.

*E.M. Murry Associates*

287 Lime Rock Road  
Litz, PA 17543  
Elmer Murry 626-5244 - 626-2636  
Richard Murry 626-8175 - 949-2280  
Ken Miller 665-2073  
Professional Auctioneers,  
Appraisers, and Advisors  
Since 1953

Sale by Owners,  
**CARL & SARAH JANE ZEISET**

J. David Young - Atty.

## Public Sales Register

Closing Date - Monday, 5:00 P.M.  
of each week's publication

### SEPTEMBER

SAT. SEPT. 12 - 10 A.M. Public Sale of Household Goods & Antiques. Take Rt. 322, East from Ephrata, Pa. to Hinkletown, at Hinkletown turn South onto Farmersville Rd., go to T Rd., property on right next to Sensenig's Furniture. Sale by Levi M. Hoover. Auctioneers John E. & Paul E. Martin.

SAT. SEPT. 12 - 10 A.M. Consignment Sale of Farm Equipment and Horse Drawn Implements located Route 11 and 15, 8 miles North of Liverpool and 9 miles South of Selinsgrove, Port Trevorton RD#1, Pa. Sale by Elmer

Stauffer, Frank Snyder and B.D. Imos, Auctioneers.

SAT. SEPT. 12 - 9 A.M. Public Sale of Antiques & Collectibles, Household Items, Farm Machinery and Misc. Located 1 mile east of Rt. 225, 10 mi. south of Trevorton, PA in the village of Red Cross. John V. Maurer Estate. Dockey & Dockey, Auctioneers.

SAT. SEPT. 12 - 10:00 A.M. Public Sale of Household Goods, 66 Landis Ave., Millersville, PA. From Lancaster to Millersville go south on Herr Ave. to Landis Ave. go west to sale. Charles and Betty Meyers



## PUBLIC AUCTION

**101 ACRE LIMESTONE SOIL DAIRY FARM**

**THURS., SEPT. 24, 1981**  
At 2:00 P.M.

Location: Take Route 272 North from Ephrata to Schoeneck Road. Turn left onto Schoeneck Road to town of Schoeneck. In Schoeneck turn right onto Steinmetz Road to second farm on the right. West Cocalico Township, Lancaster County, Pa.

**101 ACRE LIMESTONE SOIL DAIRY FARM**



### 2½ STORY BRICK DWELLING

circa 1862. Containing: Large eat-in kitchen, living room, den, full bath, four bedrooms, closets. Electric heat. Basement with brick floor and large arch cellar.

### 38 x 100 DAIRY BARN

with 40 Stanchions; with attached 14 x 32 Block Milk House, containing; Mueller 600 gallon Hi-Perform Eulk Milk Tank with Mueller Matic Automatic washing system.

### 48 x 84 2-STORY BANK BARN

with laminated rafters, 5 x 48 x 26 corn crib, and concrete cattle area.

### 32 x 56 FRAME TOBACCO SHED

with stripping room and dampening cellar.

### 33 x 38 FRAME EQUIPMENT SHED

with attached one-car garage.

Well with pressure system; 200 AMP service; 2 dusk to dawn lights; double throw switch; 300 gallon underground fuel tank with pump.

### OPEN HOUSE

Inspection of dwelling Saturday, Sept. 12 and Saturday, Sept. 19 from 12:00 noon to 3:00 p.m. or by appointment. Call 215-267-6997. Inspection of balance of farm anytime.

TERMS: 10% down day of auction; final settlement January 2, 1982. Financing available to qualified buyers. Contact owners or auctioneers for details.

### 50 ACRES OF STANDING CORN

to be sold in field.

All herein information is believed to be accurate, but is being used for advertising purposes only.

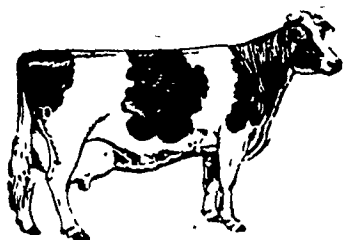
Auction by:  
**JOHN M. & LENA H. NOLT**  
R.D. 1, STEVENS, PA.  
215-267-6997

WENTZ and WEAVER, ATTYS.

AUCTION CONDUCTED BY:

JOHN E. and PAUL E. MARTIN, AUCTIONEERS  
717-733-3511 — 717-733-3305, EPHRATA, PA.

NOTE: Make plans now to inspect this farm. This ready-to-go working farm is the kind you would like to buy, but very seldom comes up for sale. Don't miss this one.



## NEW HOLLAND SALES STABLES ANNUAL FALL HEIFER SPECIAL

800-1000 registered and grade heifers  
All ages from small calves to fresh heifers

**SATURDAY, OCTOBER 10**  
10 A.M.

Fresh heifers and all registered heifers will sell at 12 Noon. Special consignment from Truman Martin of Hagerstown, MD. 20 head of opened registered heifers out of dams with 16-19,000 of milk. Sired by Gemini, Jet Stream, Char Sam Elevation Pasb and Ropies Chief Buff. Also several fancy calves that are show age. All heifers tested for out-of-state shipment. Many calfhooed vaccinated. Trucks and motels available.

Note to consignors: Please have registration papers and checks, health charts and breeding information along with heifers Friday the day before the sale.

For more information, contact Norm Kolb 717-397-5538 or Abe Diffenbach, Sales Barn office 717-354-4341.