

Sale Reports

A public auction of household goods and antiques was held September 5 for the Maurice Shaub Estate on Circle Drive in West Grove, Chester Co.

A ranch type home with 3 bedrooms, living room, kitchen-dining room, new furnace and full bath was sold for \$43,300.

Other items included: cedar chest \$35, coffee table \$25, marble-top table \$190, 5 pc. bedroom suite \$345, couch set \$200, 3 pc. maple bedroom suite \$630, oak table \$145, oak slant-top desk \$740, 8 plank bottom chairs \$47.50 ea., cherry grandfather clock \$500, Zenith TV \$500, dryer \$190, washer \$185, coffee grinder \$29, bells \$6 to \$25 and shot gun \$200.

Steve Petersheim and Everett Kreider, auctioneers.

xxx

A public auction of guns and antiques was held September 1 by Amos L. and Edna Sheaffer, 141 Tennyson Dr., Lancaster.

Items sold included: milk cans \$16 each, horse sleigh \$85, A.C. "B" tractors \$935 & 885, Model 12 Winchester pump gun \$325, 30 06 Remington gun \$270, Model 97 12 gauge gun \$300, clothes tree \$40, walnut extension table \$185, harvest table \$190, mahogany slant top desk \$410, 7 pc. cedar bedroom suite \$625, Pro Mac 700 chain saw \$180, Craftsman jointer \$220 and Craftsman drill

press \$225.

Auctioneers were Lloyd H. Kreider, Randal V. Kline & Gary L. Shirk.

xxx

A public sale of real estate and antiques was held September 5 at the John R. Smith Estate at R2, Wrightsville.

The 6 acres included a frame house, large cement block building and a frame barn which sold for \$57,000.

Other prices were: butter churn \$110, wooden tub \$110, kerosene lights \$30 to \$40 each, gasoline

engine \$300, 2-drawer spool cabinet \$190, 6-drawer spool cabinet \$220, square oak table \$300, highchair \$85, mantel clock \$75, and rototiller #B-17 \$300.

xxx

Young's Annual Antique Auction was held September 5 at the Belleville Livestock Market Building, Belleville.

Items sold were: Dutch cupboard w/glass doors \$450, corner cupboard \$300, small tin toy riding horse \$65, hanging cranberry hall light \$290, clocks \$125 to \$175, farm table \$425 and tin pie cupboard \$75.

Mark Glick and Dale

Gibboney were the auctioneers.

xxx

A public auction of real estate was held September 7 by Mrs. J.L. McKelvey, along West Park Ave., north of Schnecksville, Lehigh

Co. The 2.13-acre farmette with a 2½ story remodeled stone farm house, barn and sheds was sold for \$83,000.

Sale conducted by Ralph W. Zettlemoyer Auction Co., Inc.

PUBLIC SALE

We will sell at 2840 Hobbs Road; take Rt. 97 to McKendree Rd., go East to Hobbs Road, then 1 mile to farm; in Glenwood, Howard Co., Md. on: **TUESDAY, SEPTEMBER 15 AT 11 A.M.**

2 Duetz 8006 Tractors; New Idea Unitractor w/wide 2 row corn head; N.I. Cut-Conditioner; Oliver 1365 Tractor; Leon 744 Loader; N.H. L225 Loader; White 4-row #5400 Corn Planter w/Dickey-John; N.H. #278 Baler w/Thrower; 2 Danco Bale Body and running gears; 1 bale wagon; 3 farm wagon running gears; hay rake; J.D. elevator w/PTO Shaft; N.H. Elevator w/electric motor; Schuler Silage Cart; Brady Silage Cart; Rotary Mower; Sickle Bar Mower; 4 bottom plows; 3 pt. hitch 4-row cultivators; Brillion Chisel plow; lg. disc harrow; N.H. manure spreader; Fox Chopper; old grain drill; roto-tiller; 3 pt. hitch scraper blade.

1972 International Truck w/dump grain body; 1972 G.M.C. Truck w/dump; portable PTO generator; Lg. mobile house trailer; hay racks; feeders; cattle waterer; 1500 gal. milk tank w/automatic washer; wash tub; milking parlor stalls, pipes, compressor and 6 milking machines; etc.

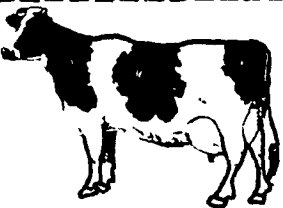
70 HEAD OF LIVESTOCK

46 Grade Holstein Heifers of which 39 are bred to an Angus Bull which was pastured with them in December; 7 open heifers; 8 Angus and black w/white face crossed cows (some w/calves); 8 feeder steers various sizes; 8 beef heifers. These animals will be tested for Bangs and T.B. within 30 days of sale.

TERMS: Cash on day of sale.

Owners: **JOHN C. & MARGARET D. FISHER** SALE MGR.: Allen T. Hill AUCTIONEERS: Remsburg Sale Service LUNCH WILL BE AVAILABLE

RUMZHAVEN COMPLETE REGULAR HERD DISPERSAL



Located 1 mile from Mainesburg, Pa. on Old State Rd.

Watch for auction arrows off Rt. 6 between Mansfield and Troy, Pa.

TUESDAY, OCTOBER 13 10:30 a.m.

100 - Registered Holsteins - 100

July 1981 DHIA RHA. 18,596m 3.7, 685F. September 1980 BAA 103.3, 1 Ex. 27VG, 26GP, 7G, 2F. (Many young cows never scored.)

Sales Managers Note: This is a good herd of cows with several top individuals and a well grown group of heifers. Please note the herd was not scored lately and many animals will easily go higher. An opportunity to purchase top pedigreed cattle. Watch for full listing.

Owners:

WINSTON & RICK RUMSEY RD1, Mainesburg, Pa. 16932 Phone 717-549-2723

Sales Managers

Gordon & Ron Wood RD2, Mansfield, Pa. 16933 Phone: 717-549-4901

"For the Most in Advertising coverage and preparing your sale, call WOOD'S AUCTION SERVICE."

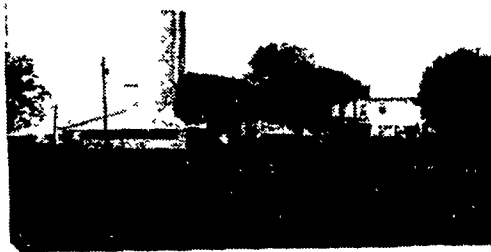
PUBLIC SALE

OF VALUABLE REAL ESTATE 20 ACRE FARM

SAT., SEPT. 19, 1981

SALE TIME 2:00 P.M.

LOCATION: Take Rt. 322 E. From Ephrata to Hinkletown. Turn right onto Railroad Ave. first farm on right. Lancaster Co., Pa.



To be offered separately in two tracts of land and in combination.

TRACT 1 — 12 plus acres, thereon erected.

2½ STORY FRAME DWELLING with aluminum siding. 10 rooms plus full bath. Modern kitchen; oil-fired hot water heat. Well with pressure system.

Frame barn with large steer stable attached. Bunk feeder and 16x75 Terre Hill stave silo with Badger unloader.

TRACT 2 — Contains 8 acres located between Railroad Ave. and Rt. 322. Zoned commercial along Rt. 322.

Your inspection invited — Saturday, Sept. 12, 1:00 p.m.-3:00 p.m. For appointment or information call 1-215-926-2908.

Note: This farm is mostly leveled land in high state of cultivation. Lots of road frontage.

Terms: 10% down day of sale. Balance within 60 days.

TERMS BY:

ELAM & VERA HOOVER

MELVIN HESS, ATTY.

AUCTIONEERS:

LAMAR Z. SENSENIG 717-354-8116

PAUL W. HORST 215-445-5119

PUBLIC SALE

28 ACRE FARM

Marietta Pike West from Lancaster to Prospect Road, turn left to stop of hill to Fairview Road, turn right 1½ miles to auction signs.

TUESDAY, SEPTEMBER 22

At 7 P.M. On The Premises

To be offered is a tract of 18 tillable acres, 6 acres of woodland and meadow. In a quiet rural area. Improvements, a 2½ story 8 room frame dwelling with bath and electricity. There is a large stone gable end barn ideal for steers and horses, a large converted tobacco shed to a poultry laying house.

Inspection invited on Saturday, September 5th from 2 to 4 p.m. or Sunday, September 6th from 2 to 4 p.m., or call owners 392-4185 from 9 a.m. to 5 p.m.

Financing available at 13% to qualified buyer. 10% down day of sale, 20% on possession in 30 days!

Owners

EDGAR M. WRIGHT

JAMES E. BLAXLAND

Claude E. Smith, Auctioneer

PUBLIC SALE

OF VALUABLE REAL ESTATE, HOUSEHOLD GOODS AND ANTIQUES

SATURDAY, SEPTEMBER 19, 1981

At 9:30 A.M.

Located along the black top road from Frystown (645) to route 501, 6 miles North of Myerstown Bethel Twp. Berks Co., Pa.

4 Tracts of Real Estate at 12:30 P.M.

Tract #1 Farm containing 95 A. more or less w/large 2½ story brick dwelling w/12 rooms including 2 kitchens full bath, center hallway and open stairway, Summer House, large bank barn, wagon shed, large garage, chicken house and other out buildings, Electric and water at most buildings, has a lot of frontage along black top road.

Tract #2 Farm containing 32A. more or less w/2½ story dwelling, w/6 rooms and bath, has coal fired hot air heat, small barn and other out buildings, w/frontage along black top road. Note tract #1 and #2 will be offered as 1 unit and also separate.

Tract #3 woodland containing 7A. more or less, w/12x24 cabin, located 2 miles North of Frystown, take Route 645 North of Schneck Road turn East and go straight one mile, watch for sale signs.

Tract #4 woodland containing 4A. more or less. Located N.W. of Bethel, take the service road West at Bethel go ¾ mile, turn North at first road go ½ mile to sale signs. Notice sale will be held at Tract #1 for all Real Estate and Personal Property. Open for inspection on Real Estate only on Friday, Sept. 11 and Saturday, Sept. 12 from 1 to 3 P.M. Real Estate will be offered at 12:30 P.M.

Terms and conditions by

AMERICAN BANK & TRUST CO. of PA.

Trustee under the will of **Catharine Peiffer, deceased** D. Frederick Muth, Attorney Reading, Pa.

Full line of Household goods and Antiques.

Elec. range like new, refrigerator, chest type freezer, wringer washer, Estate heatrola other coal heater, 2 T.V. one like new, extension, round and other tables w/boards, oak and other bedroom suites, rope bed, 3 blanket chests, spinning wheel rocker and other rockers, 6 kitchen chairs, balloon back, half spindle, arrow back and other chairs, high sink, China closet w/bow sides, Edison Victrola and records, 2 tread sewing machines, quilt frame w/legs, copper kettle, sofa and chairs, 8 day mantle, wooden measures, baskets, crocks, childs bed, gold edge mirror, Chamber set, cedar wardrobe, Eureka sweeper, corn cracker, butter churn, small stand, rugs, carpet, quilt patterns, Irons and handle, wooden tubs, 2 sets of dishes, small barrel, cookie cutters, string of sleigh bells, bone handle knives and fork, stainless steel tableware, glass ware and a lot of other small items in this sale. Sold as the Estate of Jennie M. Batdorf & Catharine Peiffer.

Terms and conditions by

AMERICAN BANK & TRUST CO. of PA.

Executor, Michael Noon Trust Officer Myerstown, Pa.

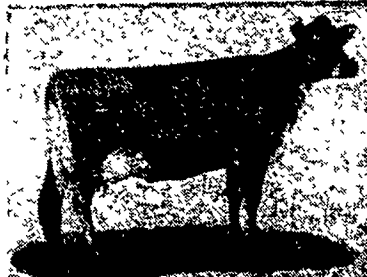
D. Frederick Muth atty. Reading

Paul E. Bixler and Gerald G. Kramer Auctioneers, Bernville

JERSEYS ARE THE EFFICIENT BREED

Come to the

PENNSYLVANIA STATE JERSEY SALE **SEPTEMBER 19th, 1981** at 12:30



at the Guernsey Sales Pavilion, Route 30, East of Lancaster, Pa.

FEATURING

A Milkhoney General daughter out of a Fairview Alpine Max. Due in December. Dam has records to 11,310m, 506f.

A daughter of Regli Premier Deni, due October 4, 1981.

A Finalist of Marlu with Cow Index: +735M +16F and record of 2-04 305 11,461 4.2% 483.

A Favorite Secret Triumph with records to 12,797m 581f. Her Generator dam has 3-10 305 13,610 6.13.

A daughter of Secret Baronet with 4-03 305 11,668 6.0% 696. Generator dam has 3-05 305 12,881 6.44.

A daughter of H.L. Pompey Frederick out of a Favorite Secret Triumph. Dam has records to 12,807m, 628f.

Two daughters of Willrich Mercury (LL) out of Generator dams with records over 15,000. Due right after the sale.

A Silver Certificate out of a cow with records to 12,622m, 517f. Due at sale time.

An Ogston Zev Orbit out of a Generator. Dam has records to 15,790m 687f. Due right before the sale.

A Blanton Tristram Generator out of a Secret Baronet. Dam has records to 12,701m, 654f. Due October 4th.

A Generators Jeweler due in August. Dam has records to 13,300m 619f.

An Ogston Silver Zevs Brother out of an Orator of Ogston. Cow Index of +1194M +36F. Fresh right before the sale.

A Samson out of a Favorite Secret Triumph. Dam has records to 12,270m, 598f. Due in November to Favorite Saint.

A Tenn Lotus BCB Lad daughter out of a Nobleman's Lotus Designer. Due again September 30, Tests 5.9%.

A Spring Run Q.S. Samson due at sale time to Hi-Power. Records to 3-08 305 11,914 6.0% 718.

A Samson out of a Generator. Dam has records to 12,515m, 598f.

A B.S. Noble Superb due in August, testing 5.6%.

Many more Plus 7 outstanding Pot of Gold calves for Junior Bidders.

Request catalogs from: Robin A. Phillips, R.D. #1, Box 94, Mohrsville, Pa. 19541