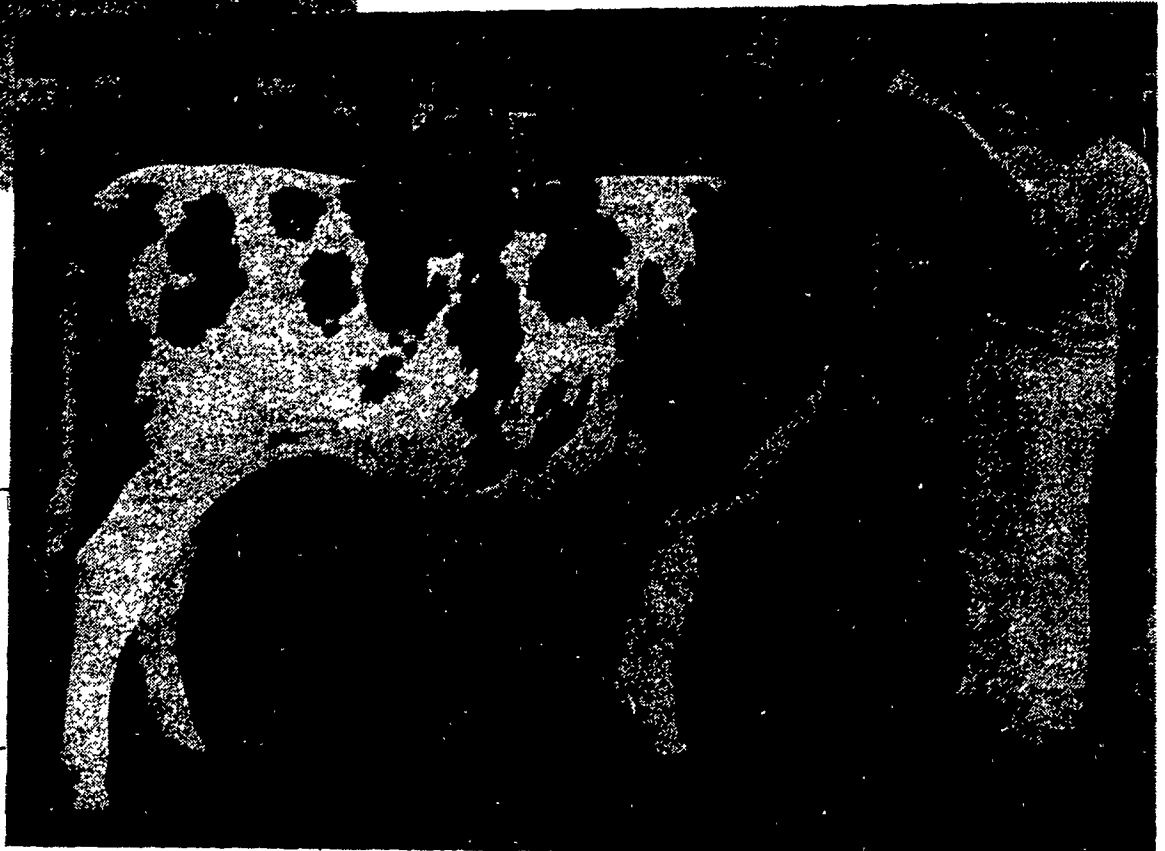




The reserve grand champion Jersey was exhibited by Bruce Rhein of Schuylkill County. She came from the 4-year-old class placing second behind the Grand Champion.



Reserve grand champion Ayrshire was exhibited by Lois Mark of Chester County. This heifer was the Junior Champion and went on to place Reserve Grand Champion.

TRI-COUNTY SWINE SYSTEMS

"When It's Time To Build, Remodel, or Replace Equipment - It's Time to Call TRI-CO."

TRUCKLOAD SALE

\$2.05
PER SQUARE FT.
1 - 10 Sheets

OF GALVANIZED WOVEN WIRE

Sizes: 5x7 and 4x8 FIRST QUALITY - 5 GAUGE

Call For
Quantity
Prices

ALSO:

SPECIAL
SALE

EXPANDED
METAL

CUSHION COATED FLOORING

★ SPECIAL SALE ★

25% OFF All Schuld Bins

Sale Extended through Sept. 26

NOTE: Price
Increase coming
October 1.

In
Stock:
3.2 Ton
4.9 Ton
7.0 Ton
9.5 Ton

PHONE 717-274-3488 LEBANON PA.



SWINE SYSTEMS

THE "SILVER LINE" -- Dependable,
Up-To-Date Equipment
Mfg. By Tri-County Swine Systems
SEE OUR EQUIPMENT ON DISPLAY
At 608 E. EVERGREEN ROAD
LEBANON, PA.

HOURS: Mon. - Fri. 7:00 to 4:30
Owners: Carl Martin & Robert High

