

Highlights of the fair

Wednesday, Sept. 16

- 11 a.m. - Judging Dairy Cattle.
- 12 noon - Various other Judging.
- 1:30 p.m. - Judging Sheep.
- 6:45 p.m. - Parade.
- 8:30 p.m. - Tug of War; Lightweight and Heavyweight Division.

Thursday, Sept. 17

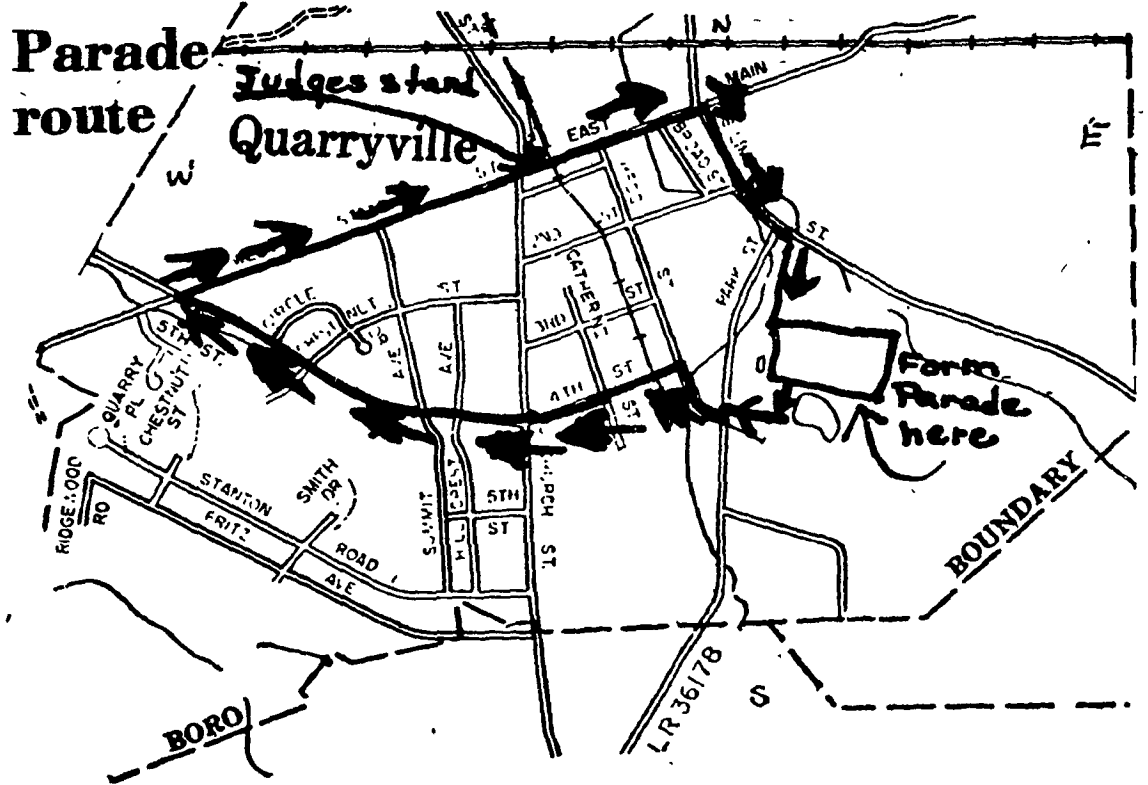
- 10 a.m. - Tractor Driving Contest; 4-H, FFA and Open Class.
- 11 a.m. - Judging Dairy Cattle.
- 3 p.m. - Judging Swine.
- 6:30 p.m. - Judging Baby Beef.
- 7 p.m. - Baby Parade.
- 8:15 p.m. - Solanco Fair Olympics; Youth and Open Competition - Teams of 6.

Friday, Sept. 18

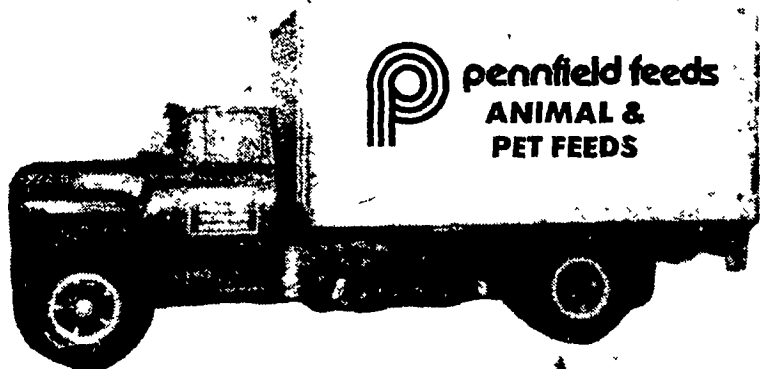
- 2 p.m. - Market Hog and Baby Beef Sale.
- 6 p.m. - Sheep Shearing Demonstration.
- 6:30 p.m. - Games for 1st to 6th grades.
- 7:30 p.m. - Choraleers
- Rural Youth Awards will be awarded during entertainment.



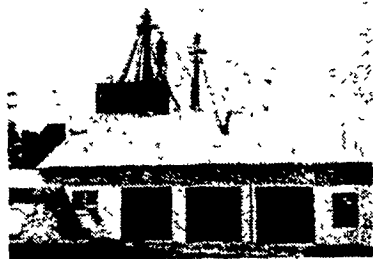
Ryan Rohrer had the top pen of 2 in the swine show at the Solanco Fair last year.



ELMER M. SHREINER T/A GOOD'S FEED MILL



RD 2 New Providence, PA
1 Mile North of
Quarryville Along Rt. 222
PH: 717-786-2500



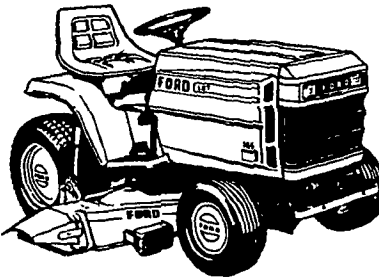
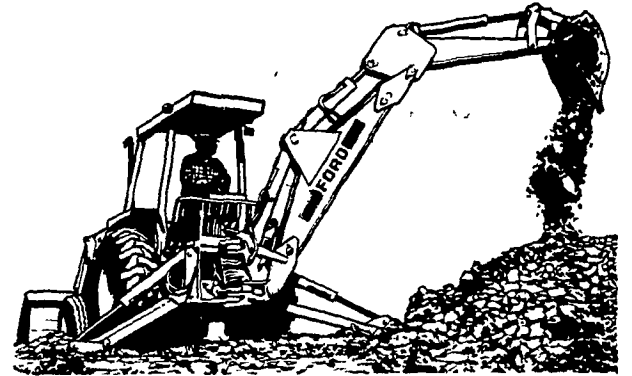
See Us At The SOLANCO FAIR Sept. 16 - 18



Full Line of
FARM TRACTORS
30 to 165 H.P.
Two Wheel Drive
Four Wheel Drive

Full Line of INDUSTRIAL TRACTORS & EQUIPMENT

- Backhoes
- Landscaping Equip.
- Mowing Equip.
- Log Splitters
- Tillers

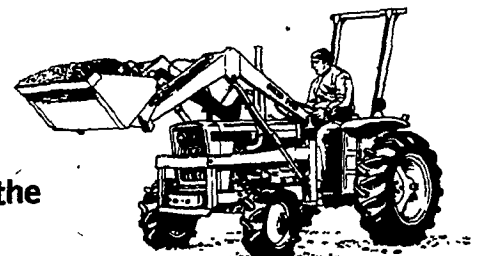


Full Line of
LAWN & GARDEN TRACTORS
8 to 16 H.P.

Complete with a full line of Attachments
• Hand Mowers • Tillers • Snow Throwers

Full Line of NEW SMALL DIESELS 13 to 30 H.P.

With a complete line of equipment for the
small farmer or large homeowner.



"STOP"

"ASK"

"SEE"

Drop in at our display at the fairs listed
above or drop in at our showroom, 1655
Rohrerstown Rd., Lancaster, PA

About: **REBATES** - Up to \$3500 or
FREE FINANCE until March 1, 1982 or
LOW INTEREST - As low as 12%

Why More and More People
Are Becoming #1
At Your #1 FORD DEALER.



LANCASTER FORD TRACTOR, INC.
THE HOME OF THE RELIABLES
1655 Rohrerstown Rd., Lancaster, PA Flory Mill Exit off Rt. 283
717-569-7063