

FARM EQUIPMENT

FARM EQUIPMENT

FARM EQUIPMENT

FARM EQUIPMENT

**SPECIAL OF THE WEEK**  
**BADGER SUPER TRAIL PUMP**

Call Us For Special Price (3 Demos Available)

**EQUIPMENT FOR SALE OR LEASE**

- BADGER**  
3,000 gal. liquid manure tank  
1,500 gal. vacuum tank  
205 Bushel Manure Spreader  
Forage Wagons  
Forage Blowers  
Bedding Chopper for Mulching  
Persuader Pump agitator for Lagoons  
Handy High Pressure Washers  
Oswalt Mix Wagons  
Grain Drill with band seeder  
Also:  
Registered Holstein Bulls



**SHOW-EASE STALL CO.**  
573 Willow Rd. Lancaster, Pa.  
Ph: 717-299-2536

**USED**

JD 6600 Sidehill combine 1977 model w/213 flex head grain platform. #643 corn head, excellent condition.  
Also have a used JD 2640 tractor. 1300 hrs., dual remote outlets. Excellent. NI self unloading, 2 beater forage wagon.

**NEW**

JD 2940 tractor. Priced to sell.  
2 JD 714 forage wagons w/JD 1065 running gears.

Waiver of Financing Available on All New and Used Tractors until March 1, 1982 and on Used Combines until June 1, 1982

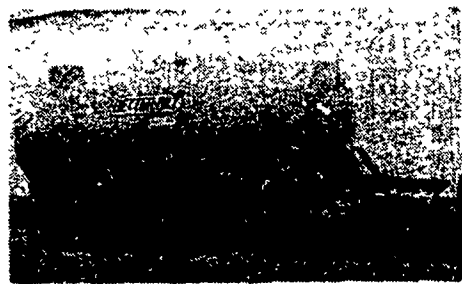
**WHITE HOUSE FARM SUPPLY COMPANY**

Falls and Mt. Carmel Rds. Upperco, MD 21155  
Phone: 301-472-2617  
or  
301-374-4321



**BRICKERVILLE EQUIPMENT**  
\* SALES \* SERVICE \* PARTS

537 E. 28th Division Highway, Lititz, PA 17543  
717-626-6198



**SPECIAL**

1 Used 3000 gallon Bilt Liquid Manure Spreader w/liquid manure spreader attachment. **SOLD**

Also **SPECIAL PRICE ON** 800 gallon thru 4600 gallon Both vacuum & augermatic spreader units available

1 - Used Gehl #72 6' cut Flail Chopper, used only on 50 or 60 acres.

**BUY "BETTER BILT" EQUIPMENT WHY? IT'S "BILT-BETTER"**

**CALL US FOR YOUR NEEDS OF**  
• Farrowing Crates • Lagoon Pumps • High Pressure Pumps

For Sale - JH-808 Diesel W.F. 3 pt good condition. \$700 berk's Co 215-683-5283 Eves  
NH 352 grainder mixer, IH 56 4 row corn planter with Gandy row band equipment; IH 53 4 row cultivators. All equipment in excellent condition. 717-567-6266 near Newport, Perry Co.

For Sale - JD 4 bottom 14" plow, model F125, 3 pt hitch, Phone /17-567-3460  
Wanted - Clover seed hulling attachment for Frick 22 inch thrasher. Jacob Stauffer, Jr. RD #1, Port Trevorton, Pa. 17864

**FARM EQUIPMENT**

**Used Equipment**

- 4520D J.D. tractor 11,900
- Satoh Elk Tractor (88 hrs.) 3,900
- 3800 J.D. Forage harvester (2 heads) 3,900
- 38 J.D. Forage Harvester (2 rows) 1,295
- 35 J.D. Forage harvester (2 rows) 1,350
- 650 J.D. Tractor 3,000
- 520 J.D. Tractor 2,200
- 235 D Massey Ferguson Tractor 4495
- AC Model A Gleaner Combine w/grain & 3 row head 11,900

**TAM SERVICES CORPORATION**

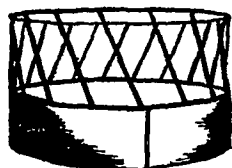
Gettysburg, PA 717-334-9148



**SCRANTON**

**ROUND BALE FEEDERS**

"The Farmers Favorite"

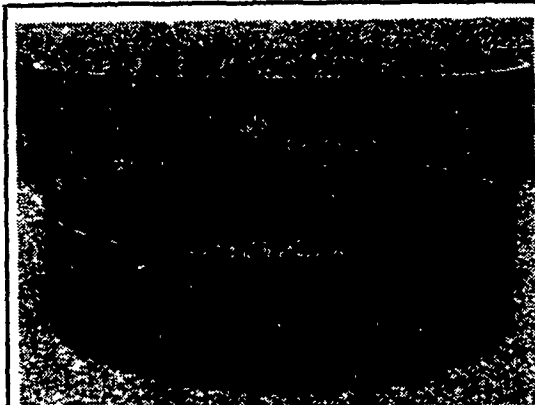


**SAVE UP TO 57% Of The Hay You Feed**

- Cuts hay waste
- Slant bar design prevents animals from crowding
- Built of 1 1/2" square tubing, stronger than round tubing.
- Cattle rarely pull hay out
- can be used for feed silage and square bales

**SEE US AT THE OLEY FAIR SEPT. 17-19! RED WING FARMS**

RD #1378, Fleetwood, Pa. 19522 215-944-0791



**HAY FEEDER**

- Feeds 18 Head
- Heavy Duty 2 Section Construction

**\$170** Call for Delivery

Custom Built **VENTILATION CONTROL** for • HOGS • POULTRY • DAIRY  
Opens and closes curtains or windows automatically according to temperature.  
**\$325** LESS 10% Through September  
**BEILER HYDRA-MATICS**  
Box 587, RD 3, New Holland, PA 717-656-7273

**TRACTORS**

- Ford 8000 w/dual wheels
- Ford 7700 Dual Power
- Ford 5000 D 8 Speed Dual Power
- Ford 4500 w/Loader & Hoe
- Ford 3500 w/Loader & Hoe
- Ford 2600 Gas, PS
- Ford NAA w/Loader
- Ford 4000 w/Loader
- Ford 801 w/Loader & Hoe
- Ford 9N w/Loader
- IH 666 D WFE
- IH 504 G, 3 pt.
- IH 330 w/fast hitch
- IH Cub w/mower
- AC 5040
- AC 160D
- AC D17 WFE
- AC WD w/loader
- Case 630 w/PS
- MF 135 G Live PTO
- MF 135D, 8 speed
- MF 65 G, PS
- JD 1530
- IH 300 Loader/Backhoe
- Satoh w/Woods mower

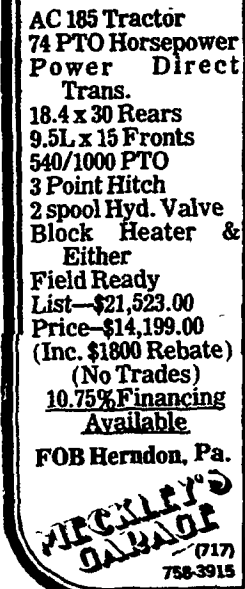
**EQUIPMENT**

- Woods C80 Mower
- Ford 532 Baler
- Ford 3 pt. Rake
- Ford 501 Mower
- Ford 515 Mower
- NI cut/ditioner
- NI 323 Picker
- MC Flail Chopper
- NH Flail Chopper

**KELLER'S FARM MACHINERY, INC.**  
116 Richlandtown Pike Quakertown, PA 18951  
215-536-4046



**41% OFF**  
AC 7020 Tractor Power Shift Trans. 120 PTO Horsepower Precleaner Cab w/Heat & AC 72 Amp Alternator 540/1000 PTO 3 Point Hitch 2 spool Hyd. Valve 10.00 x 16 Fronts 20.8 x 38 Rears Front & Rear Wts. Block Heater Field Ready List-\$43,767.00 Price-\$25,945.00 (Inc. \$5000 Rebate) **34% OFF**  
AC 185 Tractor 74 PTO Horsepower Power Direct Trans. 18.4 x 30 Rears 9.5L x 15 Fronts 540/1000 PTO 3 Point Hitch 2 spool Hyd. Valve Block Heater & Either Field Ready List-\$21,523.00 Price-\$14,199.00 (Inc. \$1800 Rebate) (No Trades) **10.75% Financing Available**  
FOB Herndon, Pa. **WICKLEY'S GARAGE** (717) 758-3915



**KENCOVE HIGH TENSILE FENCING INVENTORY SALE**  
US steel Max 10TM 200 wire. Low as \$65 for 4000 ft. coil. Kencove 14 guage wire 1'/ft. Request our complete sale listing. 412-459-8991 In PA 800-442-6823

FARM EQUIPMENT



**NEW TRACTORS**

- D6807A Deutz Tractor, FWD, 68 h.p. w/loader
- D6807 Deutz Tractor, 68 h.p.
- D6206 Deutz Tractor, 61 h.p.
- D5207 Deutz Tractor, 52 h.p.
- D4506 Deutz Tractor, 45 h.p.
- DX 120 Deutz Tractor, 110 h.p.
- DX 120A Deutz tractor, 4WD, 110 h.p.

Massey Ferguson MF-2675 w/cab, 100 h.p., 24 speed trans.  
1 pair 20.8x38 tires - Goodyear power torque  
Great Bend 1010 Loader w/96" bucket, 4000 lb. cap, like new \$2500  
Custom-built diesel Gen-Sets made to order.  
New & Used Deutz diesel engines at special prices. Call for details  
New Deutz F2L-912 diesel engines 20-32 H.P. electric start.

**Stauffer Diesel Inc.**

312 West Main Street New Holland, PA PHONE 717-354-4181

**NEW EQUIPMENT**  
**WHITE-**  
(3) Model 5100 4-Row Planters

**NEW IDEA-**  
213 Spreader w/Single Beater  
214 Spreader w/Single Beater  
243 Spreader

**BRILLION-**  
12 ft. Pullveriser

**GEHL-**  
2600 Skid Steer Loader  
4300 Skid Loader  
940 Metal Forage Box  
940 Wooden Forage Box  
FC7200 Flail Chopper  
MX100 Mixer  
MX 135 Mixer  
CB1000 Forage Harvester w/TR 3038 cornhead & HA1100 hay attachment  
F-99 Blower

**USED EQUIPMENT**  
MF Model 36 Hay Rake  
MF 4-Row w/liquid fertilizer  
FB88 Gehl Forage Blower  
Gehl 99 Forage Blower  
Int. 550 Spreader w/ Hyd. End Gate  
Super 23 NH Forage Blower  
NH 880 Harvester w/3-row narrow cornhead

**MILLER EQUIPMENT CO.**  
RD 1 Bechtelsville, PA 215-845-2911

FARM EQUIPMENT

International number 45 baler for sale in good condition, \$100, Call 717-473-8060 Nor-thumberland Co.

For Sale - MC rotary scythe, 7' new knives, real good shape, 717-687-6553 eves. & weekends 717-687-8021

**BELT POWER TRACTORS**

Int. W9 Case 900 Farmall Super M AC D-19 Int. 400 Miller's Repair Bird in Hand, PA 717-656-9013



**USED TRACTORS**

Ford 3000 Diesel Oliver 1600 Gas  
**USED COMBINES**  
White 8600 diesel hydro, cab & air  
AC Gleaner G w/13' Grain & 6R 30" C.H.  
**USED TILLAGE EQUIP.**  
Oliver 5 Btm. auto reset plow  
White 508 4B 18' Auto plow

**USED HAY TOOLS**

Hesston PT10 Windrower  
Hesston 1010 Hydro Swing Windrower  
NI 290 Mower Conditioner  
IH 990 Mower Conditioner  
JD 215 SP Windrower  
Fox SPF Fg. Harvester  
Case 220 Baler w/thrower  
**MISCELLANEOUS**  
NI 325 Picker w/8 Roll Husk Bed  
GT350 Dryer

**STANLEY'S FARM SERVICE**

RD Box 46 Klingertown, PA 717-648-2088



**USED EQUIPMENT**

Farmall Super C  
MF 1105 Tractor  
Ford 532 Baler w/Thrower  
NH 280 Baler w/Thrower  
Riding Mowers  
JD TO 100 Disc  
Grain Drills  
Woods M80 Mower  
Sun-Master B90 Mower

**NEW EQUIPMENT**

MF 4800 Tractor  
MF 1544 Tractor  
MF 30B Tractor Loader  
MF 230 Tractor  
MF 255 Tractor  
MF 265 Tractor  
MF 2675 Tractor  
MF 1050 Grinder Mixer  
MF 750 Combine  
MF 620 Disk  
MF Mowers  
MF 880 Plow  
NI 323 Pickers  
NI Manure Spreaders  
Bearcat For. Harvester  
Snapper Mowers

**N.H. FLICKER & SONS, INC.**

Box 68 Maxatawny, PA 19538 215-683-7252