

Public Sales Register

Closing Date - Monday, 5:00 P.M.
of each week's publication

THURS SEPT. 17 - Monthly Cow Sale at the Melvin Kolb, Inc. Sales Barn, 11342 Cragerstown, Rd., Woodsboro, Md. 21798. Thomas Miller, Sales Manager, Robert Mullen-dore, Auctioneer.

THURS SEPT. 17 - 7:30 P.M. Public Sale of steers and heifers. Located at Farmers Livestock Mkt., Tazewell, VA. Virginia Beef & Cattle Association.

THURS SEPT 17 - 7:30 P.M. Public Sale of heifers. Located at Galax Livestock Mkt., Galax, VA. Virginia Beef Cattle Association.

FRI. SEPT. 18, 5:30 P.M. Gap Auction. Antiques and Household Goods sold at every auction. Located off Rt. 41, Lancaster Turkey Hill Mint Market, cross RR bridge, Ira Stoltzfus & Son, Auctioneers.

FRI. SEPT. 18 - 6:30 P.M. Public Sale of Real Estate. Located south of Rt. 340 in Intercourse on Queen Rd., Henry S. Esh Owner. Robert E. and Jeffrey R. Martin and Frank L. Steller, Auctioneers.

FRI. SEPT. 18 - 12:00 P.M. Public Sale of 47 Holstein heifers, 19 registered, 12 fresh, 20 bred out of our original herd of cows Jerry and L. and Janice Moore Rd 1 Winfield, PA Owners. Located in Union Co 1 1/2 mile west of Winfield, PA or 6 miles east of New Berlin, PA on Rt. 304, turn south on Amish Rd 1 1/2 mile to farm Mark Glick Auctioneer

FRI. SEPT. 18 - 8:00 P.M. Lebanon Area Fair

Grounds. Purebred Durocs Sweigard and Ebersole Owners. Harry Bachman Auctioneer

FRI. SEPT. 18 - 6:00 P.M. 9th Production Hog Sale held at Calvin H. Lazarus & Sons Farm, 4290 Bridge St., Whitehall, PA. Lehigh Co., 4 miles north of Allentown on Rt. 145 to Columbia St. Make left 2nd Black top to right, 1st farm on left.

FRI. SEPT 18 - 7:00 P.M. Lebanon Area Fair Grounds. Rocherty Rd. East off of PA 72. Evergreen and Cornwall Rd Duroc bred gilts, York gilts, Open gilts. Sweigard and Ebersole. A.G. Keith Field Man, Harry Bachman Auctioneer

FRI. SEPT. 18 - 10 A.M. Public Sale of steers and heifers. Located at Farmers Livestock Exchange, Winchester, VA. Virginia Beef Cattle Association.

SAT. SEPT. 19 - 6:30 P.M. Danville Livestock Market. horse sale located Old Route 11, Danville, PA. Melvin M. Lehman, owner

SAT., SEPT. 19 - 9:00 A.M. Fall Consignment Auction. Towne Tractor Co., Rt. 33, Freehold, N.J. John Kachmar Auctioneer, John Wooton, Auction Manager. Consignments Welcome. 201-431-3838

SAT., SEPT. 19 - Public Sale of Real Estate. Juniata Co, PA For information contact Long Bros., Aucts. RD 2, Port Royal, PA 717-527-5784.

SAT. SEPT. 19 - Pennsylvania State Jersey Sale. Lancaster, PA.

SAT. SEPT. 19 - 2:00 P.M. Take Rt 322 E from Ephrata to Hinkletown At Hinkletown take Railroad Ave to first farm on right. 20 Acre farm for sale Owner, Elam G. Hoover; Auctioneers, Lamar Z. Sensenig and Paul W. Horst.

SAT. SEPT. 19 - 1:00 P.M. By Ammon S. Nolt. Located in the Village of Union Grove. 1 mi East of Terre Hill. East Earl Township Lancaster Co. Selling Real Estate Auctioneers: Leroy S. Horst and Paul W. Horst.

SAT. SEPT. 19 - 9:30 A.M. Public Sale of Good of Big Farm Mach. 100 acres corn and shop tools. in Huntingdon, Pa. 2 miles south of ... Creek, PA or 1 mile ... Cassville, PA ... 29 in Trough ... turn SE at ... Post Office about 1 mile to farm. John P. Horvath Owner. Mark Glick Auctioneer.

SAT. SEPT. 19 - 10:00 A.M. Benefit Sale for Honey Brook Fire Co. Steve Petersheim and Everett Kreider Auctioneers.

SAT. SEPT. 19 - 10:00 A.M. Public Sale of Real Estate, Household Goods, Antiques, Collectibles, Guns, Farm Machinery. Located 1 mile south of Enterline, Halifax, Rd. 2 in Powells Valley, Dauphin Co PA Take Powells Valley Rd. (State Game Land) approx. 5 miles east off Rt. 225 and 147 (approx. 1 mile south of Halifax) turn south on Lebo Rd. Watch for sale signs. Mr. & Mrs. Myles Rummel Owners. Ed Shoop Auctioneer

SAT. SEPT. 19 - 11:00 A.M. Public Sale of Trucks, Tractor, Trailers, Truck, Office and Shop Equipment. Located at Carroll Sales Co. yard Rt. 13, Felton, DE 9 miles from Dover. State of

Delaware, sellers Harry N. Barrett Jr., Anthony B. Carroll and Chester Lee Carroll Auctioneers.

SAT. SEPT. 19 - 9:30 A.M. - Jennie M. Batdorf Estate and Catharine Peiffer Estate. 5 miles N. of Myerstown, along the road from Route 501 to Frystown, Berks Co. 92 acre farm, 32 acre farm, 2 tract of woodland and personal property. Bixler & Kramer, Aucts.

SAT. SEPT. 19 - 12:00 P.M. Public Sale of Anti-

ques and Furnishings at Country Club Estates, Collins Ave. to Water View Lane, 1 mile south of Chestertown, MD. Mr. & Mrs. Richard Carvell Owner. Harry Rudnick & Sons Inc. Sale Managers and Auctioneers.

SAT. SEPT. 19 - 10:30 A.M. Public Sale of Farm Equipment, Trucks, Car and Cattle Located take Rte. 30, 1 mile west of Gettysburg, PA, turn left onto Herrs Ridge Rd. (at Herr Tavern) and continue 1 mile. Edward J.

Barnes Estate. C. David Redding, Auctioneer.

MON. SEPT 21 - 2 P.M. Danville Livestock

Market, cattle and hog auction. Located Old Route 11, Danville, PA. Melvin M. Lehman, owner.

PUBLIC SALE

**HOLSTEIN HEIFER DISPERSAL
FRIDAY, SEPTEMBER 18
AT 12:00 NOON**

Located in Union Co., 1 1/4 miles West of Winfield, Pa., or 6 miles East of New Berlin, Pa., on Route 304, turn South on Amish Road 1 1/4 mile to farm.

**47 HEAD HOLSTEIN HEIFERS
19 REGISTERED & 28 GRADES**

All heifers raised on this farm out of good dams from our original herd which had records over 20,000 lbs. milk. Records of dams will be given at sale. All sired by Sire Power, 10 Jet Streams, 6 New Hope Rebel Elevations, 3 Creek Bluff Elevation Lester, 3 Merry Kings, 2 Job's and other good sires.

12 fresh w/1st calf from May till sale time. 6 due Nov. 14 pasture bred due after Feb., balance open heifers and calves.

30 Day health tests - Vaccinated - Pregnancy checked

JERRY L. & JANICE MOORE

R.D. #1 - Box 451
Winfield, Pa.

Mark Glick - Auctioneer
Reedsville, Pa.

JUNIATA CO. FARM & SMALLER PARCELS AT PUBLIC SALE

**SATURDAY, SEPTEMBER 26
40 mi. west of Harrisburg, just off Rt. 22-322.**

250 Ac. offered in 2 Parcels of 125 ac. each and as one unit. 150 ac. cleared, 6 room dwelling, bank barn & silo. ALSO - 3 ac. w/5 room dwelling, 10 ac. & 17 ac., partly wooded.

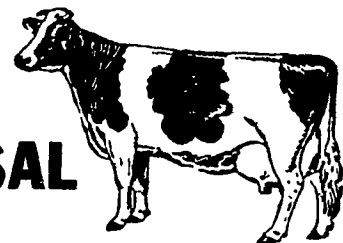
For brochure on terms & complete into. contact:
Long Bros., Aucts.
R.D.#2
Port Royal, Pa. 17082
Ph. 527-4784

NEW HOLLAND SALES STABLES, INC.

New Holland, Penna.

THOMPSON BROS. HOLSTEIN DAIRY DISPERSAL

**FRIDAY, EVE., SEPTEMBER 11
7:30 P.M.**



140 Head Holstein Dairy Cows, most calfhooed vaccinated.
70 head springers
70 head Fresh and in full flow in milk.
This herd has a lot of size and good dairying qualities, 30 day TB blood test.

H.D. MATZ,

717-733-2996
H.D. Matz

Representing Thompsn Bros.

717-354-4341
Sales Stables

LYN-LI HOLSTEINS COMPLETE DISPERSAL FRIDAY, SEPTEMBER 11

(11:00 A.M.)
FRIEDENS, PA.

At the farm. Go 7 miles north of Somerset on Rte. 281 to Friedens, turn left at Fire Hall to "T", then right one mile to farm. From north exit U.S. Rte. 219 at Rte. 281 or Friedens Interchange.

100 REGISTERED HOLSTEINS

(All tested up to date - Ready for interstate shipment - Exam for Preg.)

LOOK AT THE PRODUCTION SELLING!!

- 1 sells with 1196-lbs. fat.
- 3 more sell with from 1013 to 1023-lbs. fat.
- 3 more sell with 982,973 and 990-lbs. fat.
- 15 more sell with from 801 to 892-lbs. fat.
- 15 more sell with from 600 to 787-lbs. fat. (6 at 2 yrs.)
- 3 sell with from 28 to 30,000-lbs. milk
- 8 more sell from 23 to 26,000-lbs. milk
- 21 sell over 20,000-lbs. milk

1980 DHIR AVERAGE — 20,903 M. 317 % 779 FAT!!!

MARCH '81 BAA 105.6 SELLING: A 2E-92 - 19 "VG" (4 at 88,6 at 87) - 19 "GP" - 4 "G"

TOP SIRES REPRESENTED!!

4 by Elevation - 3 by Glendell - 7 by Startrek - 3 by Money Maker - 3 by Willow - 4 by Marquis King - 2 by Molly Chief - 2 by Astronaut - 3 by Marvex - 3 by Milu - 1 by Chief - 6 by Audets Fond Matt - 1 by Complete and others.

MANY ARE BRED TO TOP SIRES!!

4 bred to Bell - 6 to Lucky Royal - 4 to Sooner - 2 to Marvex - 2 to Mannix - 1 to Ivan Star - 2 to Superior - Persuader - Magnet - Conductor and others.

THIS IS A REAL PRODUCTION HERD
AS THE RECORDS SHOW - GOOD UDDERS AND SOUND!!!
MAKE YOUR PLANS NOW TO ATTEND AND BUY
FROM THIS COMPLETE DISPERSAL!!!

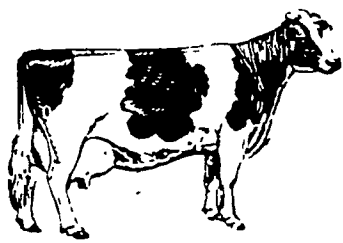
Sale starts 11:00 A.M. Lunch Available Catalogs Under Cover

Owners,
ROBERT E. TAYLOR — LEROY W. BITTNER
Friedens, Pa. R.D. 1
814-443-3475

R. AUSTIN BACKUS INC.
Sale Mgrs. & Auctioneers
Mexico, N.Y.

PENNA. HOL. ASSOC.
839 Benner Pike
State College, Pa.

NEW HOLLAND SALES STABLES ANNUAL FALL HEIFER SPECIAL



800-1000 registered and grade heifers
All ages from small calves to fresh heifers
**SATURDAY, OCTOBER 10
10 A.M.**

Fresh heifers and all registered heifers will sell at 12 Noon. Special consignment from Truman Martin of Hagerstown, MD. 20 head of opened registered heifers out of dams with 16-19,000 of milk. Sired by Gemini, Jet Stream, Char Sam Elevation Pasb and Ropies Chief Buff. Also several fancy calves that are show age. All heifers tested for out-of-state shipment. Many calfhooed vaccinated. Trucks and motels available.

Note to consignors: Please have registration papers and checks, health charts and breeding information along with heifers Friday the day before the sale.

For more information, contact Norm Kolb 717-397-5538 or Abe Diffenbach, Sales Barn office 717-354-4341.