

Public Sales Register

Closing Date - Monday, 5:00 P.M.
of each week's publication

A public auction of carpenter and cement tools was held August 29 by Raymond S. and Ruth W. Hurst, 5 miles east of Pine Grove in Rock.

Prices included: power trowler \$170, 1974 Interna Travelall \$1120, ladder jack \$470, electric jack hammer \$320, Winchester 3030 model 94 \$145, 3040 Krag rifle \$240, and school desk \$65.

Auctioneer was Steve Petersheim.

xxx

A public sale of antiques and household items was held August 26 for the Estate of Karl W. Bashoar at the "Shop and Play Hall", in Lykens.

Items sold were: oak C-roll desk \$525, empire chest of drawers \$65, empire wash stand \$75, oak library table \$30, 3 half-spindle plank bottom chairs \$24, Eastlake walnut mirror \$35, mahogany ladies' barrel roll desk \$95, 10 pc. dining room suite \$900, matching nightstand \$20, pair cherry poster twin beds \$150, mechanical bank "Chief Big Moon" \$560, Betty

Spring gobbler harvest

HARRISBURG — Pennsylvania game protectors indicate the harvest of turkey gobblers during the spring season in May of this year was the second best on record.

The 1981 harvest of bearded birds was put at 3,586 by game protectors. This compares with 3,716 in 1980, which was the all-time high.

This year the season seemed to get off to a somewhat slower start than in the past, but hunters apparently scored consistently throughout the season, ending up with a good harvest.

Game protectors' harvest figures are not the number of birds that are actually taken, but only indicators or trends in harvests of bearded birds. Game Commission studies show that the numbers of birds which are estimated taken are only about one-third of the actual harvest.



SOMETHING TO
GROW ABOUT...
LOW
CLASSIFIED
RATES
WITH
EXCELLENT
RESULTS!

light \$70, quilt \$55, gaudy decorated ironstone teapot \$47.50, Philco refrigerator-freezer \$135, G.E. automatic washer \$110 and G.E. dryer \$135.

Dockey & Dockey, Aucts. & Deppen, Apprentice.

xxx

A public sale of farm equipment was held August 29 by Mrs. Mary E. Forney, 901 Silver Lake Road, Lewisberry. Some items sold were: Farmall Super C \$1250, J.D. 24T baler \$780, Rototiller \$40, chain saw \$50, and iron kettles \$17.50.

Ralph W. Horst was the auctioneer.

xxx

An Ayrshire Auction was held August 27 by

Milt Brubaker, 595 Snyder Hill Rd., Lutz at the Guernsey Sales Barn, 6 miles east of Lancaster.

The top cow, a 5-year-old, was sold for \$1600 and she was consigned by Richard Lyons, Cochran. The second high cow was sold for \$1525 and she was consigned by Sam Diehl, Bedford. The third high animal, a bred heifer, was sold for \$1360 and she was consigned by Charles Gable of Elverson.

The average of the 25 Ayrshire sold was \$1027. There were 6 head purchased by Darryl and Doris Martin of Bethel.

xxx

A public sale of a 2½ story brick house was held August 28 by Martha Metzler, Voganville, Lancaster Co.

The dwelling was sold for \$25,900 to Maurice

Hursh of Farmersville.

Auctioneers were Leroy S. Horst and Paul W. Horst.

xxx

A farm machinery auction was held August 29 for Canyon Implementations on Route 6, midway between Mansfield and Wellsboro.

Among the 145 pieces sold were: 17 lawn garden tractors including AC 616 \$1060; 14 Haybines & Cuditioners including N.I. 272 \$1000; 3 self-prop. windrowers

including Heffton \$1075; 6 haybalers including J.D. 336 \$2650; 15 choppers including N.H. 880 \$1225; 5 corn pickers & shellers including N.I. 2-row \$1775; 10 tractors including 18N Ford \$1525, David Brown \$3400, N.F. 165 \$2950, and A.C. D 14 \$1800.

Managed and sold by Dick Crittenden Auction Co.

xxx

The Bergus Corporation sale was held on Saturday, August 29. Some of the sale items



PUBLIC SALE

MONDAY, SEPTEMBER 7

10:00 A.M.

Located along Route 209, 1 mile West of Lykens, Pennsylvania, in the village of Big Run.

REAL ESTATE

2-½ STORY FRAME HOME having 4 ROOMS AND BATH DOWNSTAIRS, 3 BEDROOMS AND BATH UPSTAIRS. Heated by EFM HOT WATER OIL FURNACE with Cast Iron Baseboard Radiation. 110' Drilled Well. Assorted Out-Buildings. Lot Size - having a frontage of 95', more or less, along Route 209, with total lot dimensions being 99 Perches, more or less. For inspection of real estate phone 453-9436 or 758-6004. Real Estate to be offered at 12:00 Noon.

ANTIQUES & COLLECTIBLES

Oak Round Glass China Closet; Flour Chest with Dough Box; Large Dry Sink Cupboard; Blanket Chest with Original Graining; 6-Pc. Decorated Cottage Bedroom Suite; 3-Drawer Cottage Chest with Mirror; (2) Empire Chests of Drawers; 1-Drawer Wash Stand with Spool Turned Arms; Rope Attic Bed with Old Red and Acorn Spool Top; Flat-Top Trunk; Large Asst. of Rockers and Chairs Includings (2) Pressed Back Rockers, Set of 4 Cane Seated Chairs, Plank Bottom Chairs (1 Decorated), (2) Half Spindle Plank Bottom Chairs, Mahogany Arm Rocker, (2) Victorian Side Chairs, Plank Bottom Sewing Rocker, Plank Bottom Rocker with Original Decoration, Set of 4 Pressed Back Chairs, Etc.; 4-Legged Walnut Table; Oak Clothes Tree; (2) Victorian Tables; Asst. of Jugs and Crocks Including 2-Gallon Jug and 2-Gallon Crock with Blue Decoration; Glass Butter Churn; Railroad Lantern; (2) Baskets; Asst. of Picture Frames; Oil Paintings on Canvas by John Uthuff, 1 of Dan Patch; Large German Bible; Books - "Disease of the Horse" 1896, "Life, Speeches and Memorials of Daniel Webster" 1859, Etc.; Quilt; Kerosene Lamp; Coffee Grinder; (2) Butter Molds; Hand-Painted Japan Ware; (3) Onion-Meissen-Type Canisters; Chelsea Ivory Dinnerware Set by Grindley & Co., England; Asst. of Depression and Pattern Glass; Hall Pottery; Ironstone and Green Pottery Pitchers; Quadruple Ware; Selection of Plates Including Staffordshire Blue Plate "The Market Place New London, Connecticut", Blue Masonic Plate Newark, New Jersey 1903, Blue Staffordshire Plate "John Allen and Priscilla", Etc.; Roseville Tea Pot and Creamer; Broad Axe; Numerous Other Items.

HOUSEHOLD ITEMS

Frigidaire 15.9 Side by Side Refrigerator-Freezer; Frigidaire Deluxe Electric Stove; Lady Kenmore 3-Speed Automatic Washer; 9-Pc. Duncan Phyfe Mahogany Dining Room Suite; China Cabinet; 2-Pc. Early American Living Room Suite; (2) Birds Eye Maple Dressers; Double-Door Cedar Wardrobe; (2) Arm Chairs; Knee-Hole Desk; Apartment Sized Kitchen Coal Stove; Double Door Wooden Kitchen Cabinet; Metal Kitchen Sink; B & W Floor Model TV; Floor Model Radio-Record Player; Misc. Dishes, Pots and Pans; Numerous Other Items.

TERMS: REAL ESTATE - 10% Down. Further terms and conditions to be given the day of sale. PERSON PROPERTY - Cash. Personal checks accepted only from persons having an established account with Auctioneer.

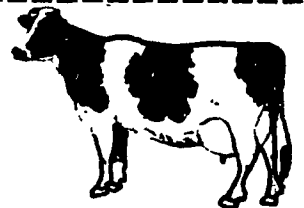
Owner,

ESTHER BOXWELL

Kerwin & Kerwin, Attorneys At Law
Dockey & Dockey, Auctioneers
Deppen, Apprentice

were: Parks 12' mixer, \$400; and Delta planter, \$512; jointer band saw 16", \$300. 16", \$600; air compressor, \$320; cement Auctioneer was Ben Habercker.

RUMZHAVEN COMPLETE REGULAR HERD DISPERSAL



Located 1 mile from Mainesburg, Pa. on Old State Rd.

Watch for auction arrows off Rt. 6 between Mansfield and Troy, Pa.
TUESDAY, OCTOBER 13
10:30 a.m.

100 - Registered Holsteins - 100

July 1981 DHIA RHA. 18,596m 3.7, 685F. September 1980 BAA 103.3, 1 Ex. 27VG, 28GP, 7G, 2F. (Many young cows never scored.)
Sales Managers Note: This is a good herd of cows with several top individuals and a well grown group of heifers. Please note the herd was not scored lately and many animals will easily go higher. An opportunity to purchase top pedigreed cattle. Watch for full listing.

Owners:

WINSTON & RICK RUMSEY

RD1, Mainesburg, Pa. 16932
Phone 717-549-2723

Sales Managers

Gordon & Ron Wood

RD2, Mansfield, Pa. 16933

Phone: 717-549-4901

"For the Most in Advertising coverage and preparing your sale, call WOOD'S AUCTION SERVICE."

CONSIGNMENT SALE

SATURDAY, SEPTEMBER 12

Located along Route 11-15 8 miles North of Liverpool, 9 miles South of Selinsgrove.

Consignments Welcome

Ford tractor; J-D 10-20 Gas With Loader; Tuff Grinder mixer; Single Row Corn Picker; Front end loader; Rear steel wheel for tractor; side delivery rake; 6 T Flat wagon; Int. riding cut.; JD Sulky Plow; Cultivator; 1-2-3 horse rides; Buzz Saw; 4 hole hog feeder; 100 gal. roof coating; cream separator; 2x4 lumber; Posts; 30-6 Rifle; School desks; and many other articles not mentioned. Sale at 10:00.

by,

ELMER STAUFFER

717-374-1575

Frank Snyder, Auct.

859-2688

B.D. Imes, Auct.

717-527-2417

No Out of Sale Checks.

Not Responsible for accidents.

CASTLE CREEK DAIRY MILKING HERD DISPERSAL ONE HUNDRED HEAD OF REGISTERED HOLSTEINS SELL THURSDAY, SEPTEMBER 10

11:00 A.M.

Farm is located on N.J. Route 57 between Hackettstown and Washington, N.J.

THIS WILL BE A BUYER'S SALE — BE SURE TO BE AT THIS SALE.

Daughters of BOOTMAKER, ASTRONAUT, MONITOR, ELEVATION, FOND MATT, KIT BUILDER and other popular sires will sell.

Labor problems are the reason the Kayharts are selling this fine group of milking animals.

Owners,

ROBERT & DORA KAYHART

Waters, Road

Port Murray, New Jersey

201-689-2605

Wm. Kent Bergen, New Jersey, Auctioneer

Mary Briggs, Maine, Pedigrees

Sale managed by:

HANOVER HILL SALES & SERVICE, INC.

P.O. Box 446

Millerton, N.Y. 12546

518/789-4722

Call or write for catalog

GAP AUCTION FRIDAY EVE., SEPT. 11

5:30 P.M.

Located off Route 41 - Lancaster Avenue Opposite Turkey Hill Minit Market - Cross RR Bridge

ANTIQUES AND HOUSEHOLD GOODS
SOLD AT EVERY AUCTION

CONSIGNMENTS ON MONDAYS
FROM 8:00 A.M. to 7:00 P.M.
OTHER DAYS BY APPOINTMENT

Call us for pick-up service

IRA STOLTZFUS & SON, Auctioneers

442-4936 or 442-8254

CONDUCTORS ALL TYPES PUBLIC SALES

FARMERSVILLE AUCTION ANTIQUE & COLLECTIBLES SALE LABOR DAY SEPTEMBER 7, 1981

9:00 A.M.

In Farmersville, 3 mi. east of Brownstown, Lanc. Co. Pa.

9 pc. cottage bedroom suite; 10 pc. Depression diningroom suite; 2 sellers kitchen cabinets; 2 dove tailed blanket chests; 3 washstands; organ stool w/ball & claw feet; 2 small cast iron stoves; 4 sets of 6 chairs including Victorian cane seat, plank bottom, oak; 2 oak chest of drawers w/mirrors; 3 oak dressers; oak drop leaf table w/2 boards; 2 rope beds; 6 leg cherry drop leaf table; Sheraton dresser; oak library table; dry sink; wooden rockers; trunks; oak bed; square stand w/ball and claw feet; mortised bench; square oak table w/claw feet and 6 boards; crocks; jugs; wicker pottie chair; cigar making tools; washboards; salts; 1910 calendar plate W.G. Eaby Bareville; compotes; spatter water jug; hanes; slipware plate w/crack; rag carpet; glassware; 1858 Bible bookmark in needlepoint; small redware crock; piano rolls; copper washboiler; kerosene lamps; childs dresser; TOOLS: train parts; childs dresser; baskets; etc.

QUILTS including 2 plain colors sawtooth, 1 hand applied w/very fine quilting, others, wooden coverlet; linens; etc.

DOLLS: old rag doll; Bisque; 20" 154 Kestner; 18" A.M. #390 w/new body; 10" dome head character baby; 5" Nippon boy; storybook doll; 15" & 12" new Bye LOs; 23" & 16" china heads; German pin cushion doll; Effanbee Dy Dee Baby; Bed doll; Carnival Kewpie; 1972 Ideal Shirley Temple; others. This is a brief list.

We sell on commission.

Call John J. Rutt: 717-354-5095

FARMERSVILLE AUCTION

R.D. #4, Ephrata, Pa. 17522

P.S. Dolls and quilts will be sold at 12 O'clock