



Chester County DHIA Monthly Report

July 1981

The cow with high fat was owned by Jefferson D. Yoder.
The cow with high milk was owned by John M. Umble and Sons.
The high herd for fat and milk was owned by Melvin S. Stoltzfus.

OWNER	BREED	NO. COWS	% DAYS IN MILK	LBS. MILK	% FAT	LBS. FAT
Melvin Stoltzfus	3	36.3	93.8	61.3	3.8	2.36
Leon D. Kurtz	3	38.0	93.8	56.1	3.8	2.14
John Umble & Sons	3	41.0	87.1	52.5	4.1	2.14
Robert E. Pepple	3	67.4	89.1	58.4	3.6	2.13
Willowland Farm	3	59.6	95.8	58.8	3.6	2.11
D. & T. Kauffman	3	27.9	87.1	58.5	3.6	2.09
John S. Stoltzfus	3	71.4	89.6	55.4	3.7	2.06

Dauphin Co. DHIA

(Continued from Page D18)

Jeff Rode 116	3-0	18,109	3.5	638
Arthur Brandt				
Dove	8-2	16,943	3.4	571
19	7-4	15,114	3.5	530
Della	7-9	15,918	4.4	697
Henny	6-10	13,011	4.1	536
Roxie	6-10	15,257	3.8	583
Mille2	7-3	18,209	3.7	679
Hope	6-11	16,242	3.8	623
Toy	5-9	14,313	5.0	710
Goldie	5-4	14,250	3.6	516
Lilly	4-8	15,573	3.4	530
Chime	3-10	11,984	4.4	524
85	3-9	14,089	4.1	584
86	3-11	15,318	3.6	555
87	3-6	14,058	3.9	550
Elwillo Farms				
94	5-8	16,591	3.6	603
11-R	3-5	16,422	3.3	543
187	5-9	14,336	4.5	640
186-R	4-4	14,562	3.7	538
191	2-9	10,525	4.8	503
Larry L. Boyer				
Cindy	4-3	20,098	3.6	718
Grace	4-11	15,107	3.6	547
Dale F. Faust				
Bosy	8-8	13,714	3.9	528
Fern	7-0	15,707	4.0	624
Nita	6-9	15,115	3.8	580
Nancy	5-0	13,964	4.4	616
Robert N. Miller				
Heidi	8-9	14,910	3.9	588

Willowland Farm	3	58.4	89.6	58.0	3.5	2.04
D. Hostetter Jr.	3	75.6	88.9	56.3	3.6	2.00
Beiler & Barlow	3	61.6	94.9	53.9	3.7	2.00
Paul King	3	72.5	96.9	54.6	3.6	1.99
Kulp Bros.	G3	88.7	85.5	49.3	4.0	1.99
Aaron Burkholder	B3	45.0	94.5	52.1	3.8	1.97
Jonas B. Stoltzfus	3	41.3	92.0	51.1	3.8	1.96
Lene Hill Farms	B3	53.0	91.3	55.3	3.5	1.95
Wilmer Hostetter	B3	45.1	86.9	55.3	3.5	1.92
Ardrossan Farms	1	114.2	86.5	47.6	4.0	1.90
Daniel Stoltzfus	B3	39.7	88.1	51.0	3.7	1.90
F. Miller & Sons	B3	68.5	89.1	49.4	3.8	1.89
Charles J. Moore	B3	55.4	82.4	55.4	3.4	1.89
David Windle	3	45.0	83.3	52.2	3.6	1.89
Robert Dolinger	G3	28.1	99.9	52.9	3.6	1.89
Glen H. Freese	3	68.2	91.1	53.0	3.5	1.87
D. Hostetter Jr.	3	76.6	86.3	51.2	3.6	1.85
Round Top Farm	B3	82.5	87.1	53.3	3.5	1.85
Kenneth Umble	3	43.5	82.0	49.8	3.7	1.84
David Stoltzfus	B3	43.4	90.9	48.2	3.8	1.82
John L. Stoltzfus	B3	31.3	95.3	54.7	3.3	1.82
Leon D. Kurtz	3	37.2	92.2	49.0	3.7	1.81
Applebrook Guern.	2	63.9	90.2	40.8	4.4	1.81
D. Hostetter Jr.	3	48.3	87.4	52.9	3.4	1.81
Aaron Burkholder	B3	43.6	96.6	50.3	3.6	1.80
Wilkinson Farm #2	B3	79.6	92.0	49.3	3.7	1.80
Harold R. Kulp	B3	72.0	90.9	48.0	3.7	1.79
Mildred Seeds	4	12.0	86.8	36.9	4.8	1.78
H & R Mason	3	103.3	86.7	52.6	3.4	1.77
Simon Z. Zook	G3	38.5	90.9	49.9	3.5	1.77
Lester Eby	3	58.3	90.7	50.0	3.5	1.76
Dennis Bush	B3	114.7	89.3	50.4	3.5	1.75
Richard Albright	B3	55.2	79.7	51.4	3.4	1.75
Robert Dolinger	G3	29.0	94.9	48.4	3.6	1.75
R. Proud & Son	B3	59.9	90.1	48.2	3.6	1.74
Timothy Kauffman	3	38.7	85.6	48.8	3.6	1.74
Dunwood Farm	3	51.8	91.4	47.7	3.6	1.73
Rose View Dairies	B3	41.0	89.7	48.1	3.6	1.73
G. Stoltzfus Jr.	B3	44.4	87.2	51.3	3.4	1.72
Eimer A. Mast	B8	69.5	88.8	44.6	3.8	1.71
Eimer A. Mast	B8	72.5	85.4	44.4	3.9	1.71
Hargret Dairy Inc	B3	46.1	83.2	45.5	3.7	1.70
Breck A-De Farm	3	83.8	84.5	46.4	3.6	1.69
A. R. Stauffer	B3	30.1	96.0	44.9	3.7	1.68
Ronald F. Elliott	B3	66.7	90.2	45.7	3.7	1.68
D. Hostetter Jr.	3	49.0	83.2	49.8	3.4	1.68
Walmoore	B3	146.4	83.4	47.1	3.6	1.68
J. Dean Cheek Jr.	B3	43.5	87.5	49.9	3.3	1.67
Roll A Way Farms	B3	52.7	95.5	48.2	3.5	1.67
Roll A Way Farms	B3	53.5	91.1	47.5	3.5	1.67
Christ Stoltzfus	3	55.0	87.7	45.9	3.6	1.66
J. Harold Bare	3	59.8	87.9	47.6	3.5	1.65
John R. Groff	B3	52.0	84.2	43.3	3.6	1.64
David L. Weaver	B3	44.0	80.1	48.7	3.4	1.64
Charles H. Gable	1	64.7	88.5	41.3	3.9	1.63
Herman Stoltzfus	3	50.1	82.0	45.5	3.6	1.63
Jefferson D. Yoder	3	68.7	78.3	43.6	3.7	1.62
Benjamin Kauffman	B3	35.0	93.4	46.6	3.5	1.62
Christ Stoltzfus	B3	34.0	89.1	45.9	3.5	1.62
Earl Mast	3	34.8	92.0	47.0	3.4	1.61
Martin M. Weaver	B3	113.8	85.3	43.9	3.7	1.61
J. Kenneth Landis	B3	46.0	85.5	43.8	3.7	1.61
Calvin S. Kurtz	B3	62.8	91.2	44.8	3.6	1.61
George P. Lamborn	3	41.4	75.0	46.2	3.5	1.61
James V. Yale	B3	57.7	87.9	44.9	3.6	1.60
Jonas Z. King	B3	36.9	80.9	46.3	3.5	1.60
John P. Kauffman	B3	41.1	90.5	48.0	3.3	1.60
Walmoore #3	B3	148.3	84.1	45.8	3.5	1.59
Walmoore 1	B3	142.5	84.8	45.6	3.5	1.58
Mrs. J. Hannum 3B	G3	90.6	82.8	45.5	3.5	1.58
Merle J. King	B3	78.3	80.3	42.7	3.7	1.58
V. Guest & Son	B3	78.8	81.2	42.2	3.7	1.58
Harold J. Ranck	3	35.1	93.2	43.3	3.6	1.58

Lancaster Farming, Saturday, September 5, 1981—D19

Newton Evans Jr.	3	68.0	87.5	47.4	3.3	1.57
Gideon Stoltzfus	B3	49.6	90.4	44.1	3.6	1.57
Benjamin Kauffman	3	45.8	93.7	40.2	3.9	1.56
Donald M. Horning	B3	38.0	86.0	38.7	4.0	1.55
Henry S. King	B3	51.8	85.0	44.2	3.5	1.55
H & H Dairy Fms	B3	66.2	84.2	43.3	3.6	1.55
Enos R. Peifer	B3	56.9	82.6	41.4	3.7	1.55
Swan View	3	61.9	86.2	43.3	3.6	1.54
Edgar Miller	B3	40.4	91.8	41.8	3.7	1.53
J. Elmer Lapp	3	41.1	81.4	42.7	3.6	1.53
David E. Weaver	3	83.5	79.6	38.8	3.9	1.53
S. & M. Matthews	B3	27.0	88.9	43.5	3.5	1.53
Samuel B. Acker	B3	201.4	88.5	45.7	3.3	1.52
Mt. Olivet Farm	B3	133.0	80.9	42.0	3.6	1.51
Harold J. Ranck	3	50.8	85.3	40.3	3.7	1.51
Rothenberger Bros	G3	122.6	91.2	40.3	3.7	1.51
Calvin R. Blank	B3	51.0	80.0	41.8	3.6	1.51
Paul M. Snader	B3	28.2	81.1	38.9	3.9	1.50
T Halladay & Son	B3	69.0	89.2	45.0	3.3	1.50

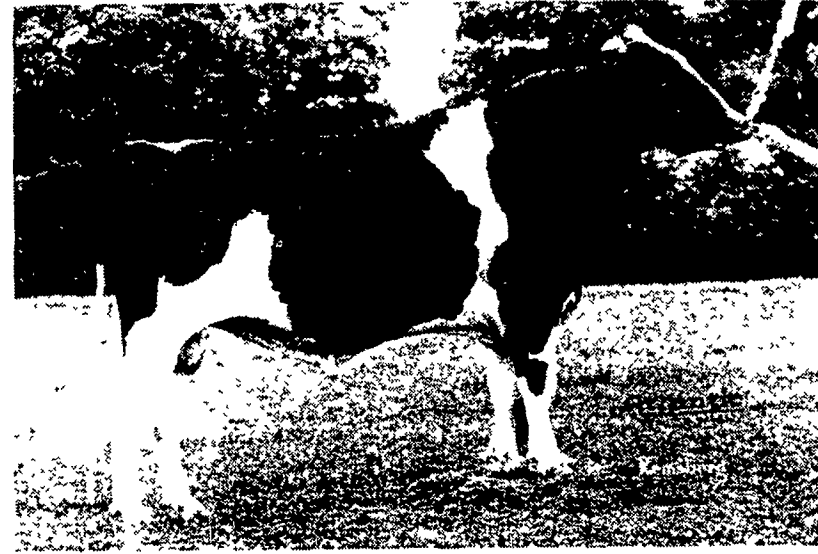
OWNER NAME OR NUMBER	DAYS IN MILK	LBS. MILK	% FAT	LBS. FAT
Jefferson D. Yoder				
3	305	25,095	4.0	1003
4	305	21,169	4.3	908
45	305	21,678	3.4	727
John S. Stoltzfus				
Lois	305	24,621	4.0	978
Parla	305	22,947	4.1	950
Martha	305	25,389	3.7	936
Jer	305	20,367	4.0	809
Thelma	305	17,759	4.3	764
Louis C. Neyman				
28	305	20,410	4.8	971
SR & MJ Matthews				
19	305	21,861	4.4	960
52	305	15,987	4.4	706
John M. Umble & Sons				
Sweet	305	19,710	4.9	956
Mable	305	25,449	3.3	837
Rose	305	19,574	3.7	724
Donald Hostetter Jr.				
Heidi	305	23,472	4.0	943
Christ L. Stoltzfus				
Laurie	305	22,282	4.1	918
Odel	305	21,227	3.9	823
Melvin S. Stoltzfus				
Ben	305	19,314	4.7	912
Orchid	305	19,993	3.7	744
Emma	305	20,930	3.4	710
Rothenberger Bros.				
10	305	23,009	3.9	897
65	305	18,217	4.3	786
David K. Stoltzfus				
7	305	21,711	4.1	893
288	288	19,044	4.7	886
Robert E. Pepple				
22	305	23,646	3.8	889
26	305	23,814	3.6	864
47	305	19,833	3.9	775
60	197	17,838	4.0	705
Ronald F. Elliott				
169	272	19,164	4.6	883
193	305	17,923	4.0	719
156	305	15,902	4.5	716
David & Tim Kauffman				
Tina	305	21,462	4.1	871
Paul King				
Astro	305	22,515	3.8	865
Snitz	305	17,092	4.5	771
Burke	305	19,437	3.8	748
Folly	305	17,538	4.2	743

(Turn to Page D20)

New Atlantic Production Improvers



15H267 Great-View BACH Of Spring-Lane — G
22 Daus. in 19 Herds Ave. 17,301M 3.6% 630F
Predicted Difference (48% rpt.) +1,140M +\$125 +30F
Type Strengths: teats and rump
Sire: Harrisburg Gay Ideal — EX & GM
Dam: an EX-2E Apollo dau. with rec. to 29,326M and 985F



15H276 Lovdal MAGNET Chief Falcon — VG
10 Daus. in 10 Herds Ave. 19,852M 3.4% 684F
Predicted Difference (29% rpt.) +1,433M +\$150 +33F
Type Strengths: fore udder, teats, rump, and open ribbing
Sire: C Romandale Shalimar Magnet — EX & GM
Dam: a VG Arlinda Chief dau. with rec. to 30,720M and 1,161F

(July/81 USDA Production Summary)

Our Daily Holstein Selection Includes:

- 27 bulls with milk PD over +1,000
- 33 bulls with value PD over +\$100
- 13 bulls with +PD for % test
- 32 bulls with at least 70% repeatability
- 28 bulls with +PD for type

All are priced reasonably through Professional Technician service and Direct-Herd sales!

Atlantic

LIVESTOCK BREEDERS COOPERATIVE SERVICES

Member — NAL Affiliated Breeders
Toll-Free 24 Hour Phones For Service:
Lancaster Area 569-0411

Pennsylvania 800-732-0391 Del., Md. & N.J. 800-233-0216
Our Representative in Northeastern Pennsylvania is Taurus Service
Approved by Certified Semen Services