

Lancaster Farming

VOL. 26 No. 45

Lancaster Farming, Saturday, September 5, 1981

\$7.50 Per Year

Doeberieners, Park team up with top PA cow

BY DONNA TOMMELEO
BLOOMSBURG — Two Western Pennsylvania Holsteins captured Grand Champion and Reserve Grand Champion honors, Wednesday evening, at the 1981 Pennsylvania Holstein Championship Show.

Described by show judge Mary Briggs of Brigeen Farms, Maine, as a "super cow," Parkacres Sun Ivy topped more than 200 of the state's finest Black and Whites at the Bloomsburg Fairgrounds. The 7-year-old, also the Senior Champion, was the aged cow entry of Ed Doeberieners, Jamestown and John Park, Brookville.

It wasn't the first time the Ivy cow carried the Grand Champion banner this year. Last month she was named Grand Champion at the Western Championship Holstein Show in Butler.

Sired by Penstate Ivanhoe Star, the champ is out of Wintercrest Sunbeam.

Judge Briggs opted for a younger animal as Reserve Grand and Senior Champion.

Ed-Em Princess Willow Maria, the 4-year-old entry of Erie County dairyman Howard Hammond was

chosen as Reserve Grand Champion. Hammond's animal is sired by Willow-Farm Rockman Ivanhoe and out of Valley-Gate Astronaut Princess.

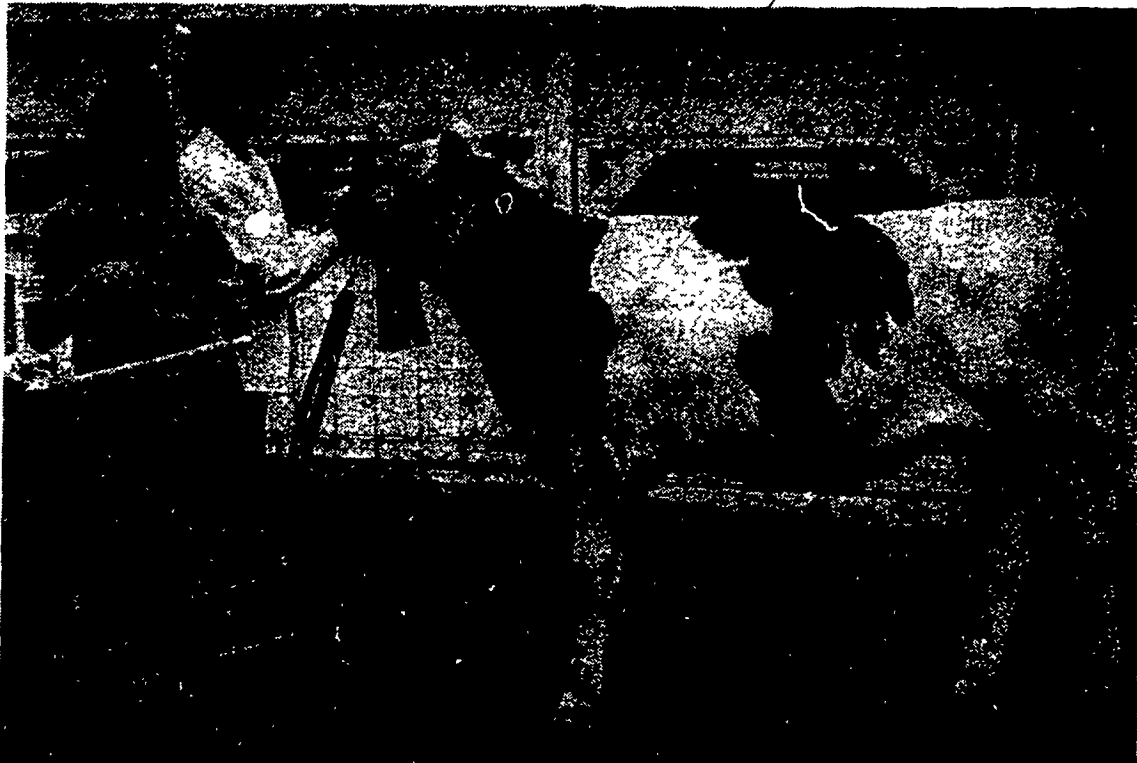
Western Pennsylvania Holsteins also comprised the top Regional Championship Herd in the show. The regional herd included eight animals from Erie, Lawrence, Crawford, Mercer and Butler counties.

Parquesburg breeder Donald Hostetter repeated his Eastern Championship performance and took home the Premier Breeder and Exhibitor banners. Hostetter's Maplebound prefix topped four of the six group classes in the show.

A Mansfield FFA member exhibited the top junior animal in the competition. Brenda Robson, 14, took home the Junior Champion rosette with her intermediate heifer calf, Gray-Valley Kit Builder Aris. The calf was also junior champ at two district FFA shows this summer.

Judge Briggs chose Delmer Cornman's senior yearling for Reserve Junior Champion. The Mechanicsburg dairyman's bred

(Turn to Page A34)



Brenda Robson, 14, is at the halter of her top intermediate calf, while her sister Sandy, Bloomsburg, Wednesday. The Mansfield 12, displays the winning banner. Gray-Valley youngsters are the daughters of Harold and Kit Builder Aris was named Junior Champion Leona Robson.

2 'Chapmanions' top 4-H show

BY DICK ANGLESTEIN
LANCASTER — If there is such a word as a "Chapmanion," it was coined at Thursday's Lancaster County 4-H Pig Roundup and Sale.

In fact, it was coined twice. At the top of the champion list in the Roundup with the first four awards were the Chapman sisters, Liz, 16, and Chris, 14, daughters of Mr. and Mrs. John Chapman, R5 Manheim.

Liz had the grand champion of the show, a 225-pound heavyweight that brought \$4.25 a pound when Jerry Clemens, of Hatfield Packing, stopped nodding his head to the auctioneer. She also had the champion trio, which included the grand champ.

Sister Chris had the reserve grand champion, a 220-pound medium weight, which brought

\$2.05 a pound. It was also bought by Hatfield. And Chris had the reserve champion trio.

In all, thirty-five 4-Hers showed 138 head — or more than 15 tons of pork — at the roundup held at the Lancaster Stockyards. The sale totaled \$18,680.52 for an average of 61.3 cents a pound.

The Chapman sisters garnered a total of \$2,113.20 for their grand and reserve individuals and trios that will now be credited to their future college bank accounts.

The Chapman sisters come from one of the county's leading swine breeding operations. Their father, John, is in partnership with Mark Nestleroth in Dutch Valley Farm.

The champion swine were Duroc-sired out of sows that are York-Landrace-Duroc crosses.

Liz and Chris work together on their swine projects, helping each

other out in the feeding and pre-show exercising.

Chris had the reserve champion at last year's 4-H Roundup. Liz had the champion at the Manheim Fair two years ago and the champion heavyweight at the State Farm Show, also two years ago.

Other top results at the Roundup:

Champion Pen of 10 — Bobby Brubaker.

Reserve Champion Pen of 10 — Bruce Sipling.

(Turn to Page A28)

Rep. Walker stresses long term plan

LANCASTER — Many U.S. citizens have a lot of questions as a result of the present administration's economic package, effective October 1, 1981, and U.S. Representative Robert S. Walker was in the county Tuesday to field many inquiries from local farmers.

On his tour of five Lancaster County farms, the East Petersburg native commented that the majority of questions concerned interest rates.

"By the end of the year we should see a fairly dramatic downward shift in the interest rates moving toward 15 percent in the prime rate," Walker explained.

However, Walker's main message urged farmers and families the time is now to "buckle down for the long haul."

"Both Republican and Democratic administrations took short term expedient approaches to the economy rather than taking a long term approach."

When asked about the present Social Security system, Walker explained the current system was created as a supplementary program. Due to the addition of many social welfare and disability programs, the system has increased an astounding 1,500,000 percent.

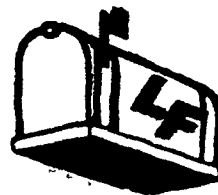
funds will go bankrupt, particularly the old age and retirement funds but other funds within the program will compensate.

"We should use the short-term crisis to make the long-term adjustments."

The future job market may broaden he suggested. Advanced

(Turn to Page A29)

Inside
This
Week's...



Last week the Lancaster County 4-H'ers held their annual Achievement Day Fair. For a taste of the fun, turn to page...C18.

Cowplex is a complex Missouri dairy operation run by a family corporation. Read about their modern milking business on...D2.

Project in the works for preserving fertile Oley Valley farmland...D11.

COLUMNS

Editorials, A10; Now is the time, A10; Ladies have you heard? C10; Joyce Bupp's column, C11; Ida's Notebook, C13.

NONE AND YOUTH

FFA, B3 and 4; Homestead Notes, C2; Home on the Range, C6; Farm Women Societies, C8; Kid's Korner, C14; 4-H News, C14.

DAIRY

Tioga dairy, C24; Central Holstein show, C26; Huntingdon 4-H, D6; Central FFA, D8; York DHIA, D15; Dauphin DHIA, D18; Chester DHIA, D19; Adams DHIA, D20; Upper Susquehanna DHIA, D24; Susquehanna Dairy Show, D26.



Chapman sisters, Chris, left, and Liz show winning smiles after capturing top four awards at Thursday's Lancaster County 4-H Pig Roundup.