

REAL ESTATE

For Sale - Dairy Farm 1345 acres, 655 tillable, milking parlor, 425 tie stalls for milking cows large barn, 112 tie stalls, 68 stalls for young stock, calf barn, large shop 6 one family homes, 2 family home, 3 family home, 5 family apt., mobile home Must be seen to be appreciated Located Susquehanna County Call 717-278-1149

FRANKLIN CO.

270 acres modern dairy farm

77 acres with house & barn, good land

LANCASTER CO.

14 acre farmette NW of Elizabethtown
Van Cleve Real Estate
717-392-3032

SNYDER COUNTY

150 acre dairy, silo, 100 acres tillable, loafing area for 40 cows \$225,000.

White Deer
LYCOMING
COUNTY

90 acre farm, 45 to 50 acres tillable, nice land that could be cleared, (2) 2 story chicken houses, poultry shelter over 200' long, corn barn, horse barn, work shop, nice house, 1 mile off Rt. 15.

DONALD R. WITWER
REAL ESTATE

Ephrata, Pa. - Office
717-733-4138 or
215-267-7963

Today it takes
two...PARTNERS
and YOU

BERKS CO. FARM

60 acres w/lg main house tenant house bank barn lot of rd frontage \$175,000



RONALD W. KRALL
REAL ESTATE
PARTNERS

717-866-2131
ROUTE 422 MYERSTOWN
BRANCH OFFICE
QUENTIN RD. LEBANON
717-273-1631
MEMBER LEBANON CO. &
BERKS CO. MULTI LIST
Each office independently
owned & operated



BAUGHMAN
REALTORS

IT'S NOT JUST ANOTHER FARMETTE! It's history w/a country kitchen, 4 BRS, & large bath, 20x50 bank barn, tranquil setting, country view, garage, shed & ground cellar (12608)

8½ ACRES! approx 2½ acres w/spring, about 5 acres woodland (can be purchased with more or less acreage) 16x32 inground pool, 4 BR frame house, Red Lion Schools, Owner financing at a low interest rate (12300)

MANY USES! for this 70 acre estate with 5,400 feet of road frontage, ideal for farming, sub division, or investment! Red Lion schools (10942)

BARN ONLY +146 acres of good farm land and woods asking \$1,400 per acre (13526)

717/741-4671

REAL ESTATE

CENTRAL NEW YORK OFFICE

INCLUDES 67 HEAD, 4 DIESEL TRACTORS & BULLDOZER plus all machinery. 150 acre farm near Amish community has 150 acres open & level with 2-3 streams and pond Barn has 62 ties on Surge 6 unit pipeline cleaner silo 10 heifer ties Extensively remodeled 10 room home JUST LISTED AT \$220,000 FOR APPT CALL 315 891 3414 or WEST WINFIELD 315 822 5763

SOUTHERN NEW YORK OFFICE

ACCOMODATES 117 HEAD 360 acre farm has mainly clear alfalfa seeding 155 acres tillable, 40 acre woodlot Main barn has 97 ties on 2" pipeline 20 heifer ties in connecting 40x60 barn 2 Patz cleaners 2 Globe unloading silos 1000 gallon bulk tank Very nice 4 bedroom home with office Large FLB assumable JUST LISTED AND PRICED RIGHT AT \$172,000

ACCOMODATES 420 MILKERS in 2 modern free stall barns with 24x70 parlor, 10 on a side with 1000 & 1200 gallon bulk tanks 25x80 Harvestor plus 24x60 16x60 14x50 & (2) 20x80 concrete silos 500 ton trench Underground manure storage 500 ton Butler feed tank 15,000 liquid tank 36x120 dry cow barn 830 acres, 450 tillable capable of 5 6 ton/acre HM corn yields 50-80 acre gently rolling fields Excellent brick main home Very good 2 family tenant house Farm has produced 16,000 lbs milk/day over a 5 yr period Needless to say it is moneymaker JUST LISTED AT \$1,300,000 with cattle & machinery available at current prices CALL TRUMANSBURG OFFICE 607 387 9303

ST. LAWRENCE VALLEY OFFICE

LOGGER'S PARADISE 400 heavily wooded acres with ample sawtimber Marketable stands of hardwood haven't been cut in years Very accessible yet priced at only \$165/acre Secure your future energy investment now JUST LISTED AND NOT HERE TO STAY AT \$66,000

YOUNG FARMER'S PARADISE complete 220 acre farm can be bought right has 160 tillable 53 cow barn is nice to work has concrete silo cleaner 5 Surge bucket milkers & dump station Brand new 3 bedroom ranch with full basement Price includes 31 milkers 10 Y S all machinery \$165,000 with \$55,000 down or \$110,000 bare with \$10,000 down NOT MANY AROUND WITH TERMS LIKE THIS! CALL GOUVENEUR OFFICE 315 287 4163 PHOTO BROCHURES

FREE DAIRY CATALOGUES AVAILABLE AT

WIMPLE REALTORS

HEADQUARTERS, SLOANSVILLE, NY

NORTH CENTRAL PA.

57 ACRES. Beautiful views. Wooded Blackwell Area \$500 per acre.

23 ACRES Wooded Excellent hunting area. \$17,500

DAIRY FARM. 450 ACRES 170 tillable, 165 pasture, Barn plus heifer barn. Good house, easily converted into a 2 family dwelling \$250,000.

HANDYMAN SPECIAL 21 acres, House & barn. Some woods, beautiful view, stream \$25,000.

CAMP SITE 1 acre, well & septic. Good Hunting area \$5,000

11 Central Ave.
Wellsboro, Pa. 16901
717-724-3232

DAIRY FARM 246 acres, 160 tillable. Barn & Heifer barn. Modern home. Good location. \$189,000.

105 acres. Beautiful views. Springs. \$900 per acre.

14 S. Main Street
Mansfield, Pa. 16933
717-622-2196

SOUTHERN NEW YORK 130 acre farm. 50 tillable. 2 drilled wells. House & barn. \$48,000.

15 ACRES Wooded and surveyed. Good access. Southern New York. \$300 per acre

102 S. Buffalo St.
Elkland, Pa.
814-258-5127

Call collect or write for further information.



REAL ESTATE
WILKINSON & DUNN
COMPANY

193 AC. BRADFORD CO.
62 STALLS

Heifer barn, 2 silos, nice home, very good water supply, tall corn, plenty of hay. 85 rented acres available Early possess. \$179,500.

Call Carl Diller at
KINGSWAY REALTY

RE Salesman & Auctioneer
717-569-8701, 656-6717, 464-2233

NEW YORK FARMS

300 acre lake country farm, big fields, good land, 60 cow dairy barn, large home. This is a showplace farm \$225,000. Owner financing.

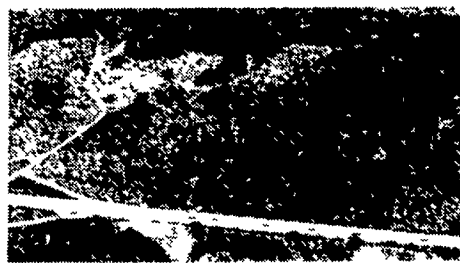
200 acres, 175 tillable, big fields, large home, 40 cow barn, secluded location. Beautiful view of valley. \$120,000

We have farms all sizes throughout central New York Please call for appointment.

RICHARD E. POSSON REALTY INC.

R.D. #3
Norwich, NY 13815
(607) 334-9727

242 ACRE CHESTER CO.



Highly productive grain and steer farm. Stream, spring, beautiful stone farmhouse, modern kitchen and baths. Located at Route 30 Interchange. Zoned for Industrial and Residential growth. Priced under \$5,000 per acre.

WEST OF YORK

Just over the York Co. Line, 114 Ac. beef, hog, possible dairy. Good set of bldgs. w/2 story stone home. Reasonably priced.

LANCASTER CO.

42 AC. LANC. CO.

Mushroom setup can show \$60,000 + net profit. New Cape Cod brick home. Much more. Call today.

50 Ac. Res. stone home, gentleman estate, stream, priced reasonable, So. Lanc. Co.

20 Ac. 300 fruit trees, ex. brick rancher, barn etc. Lanc. Co.

HUNTINGDON CO.

1½ mi. to Raystown Lake, 72 till. 92 Woodland, Pasture, Perfect setting for campsite, 178 Ac.

SNYDER CO.

Total 229 Acres, silos, grain bins, good home, these 2 neighboring farms (130 Ac. & 99 Ac.) could be worked together.

115 Ac., Col. brick home, ideal loc. Appr. 1 mi. front, Rt. 11-15. View of the River Selmsgrove.

28 Ac. gen., bldgs., opportunity, can be divided.

Farm opportunity including 50 Ac. orchard and equipment. Poss. \$100,000 apple harvest.

3 LIMESTONE FARMS

Northumberland Co.

in the same neighborhood

128 Ac., 58 stall setup, lays nice. Poss. fin., make offer; 105 Ac., 100 steer, bl. silo; 100 Ac. general, 14x60 silo, 5 br. home, view of river.

193 Ac. + (85 rented Ac. avail. nearby) 62 stalls, heifer barn, nice home, Bradford Co.

72 Ac. front, no house, fertile soil, spring, some woods, good loc. near 322, Juniata.

126 fert. Ac., bldgs., stream, own. fin., Col. Co.

Wanted - a go getter with some down payment for this low price 108 Ac. farm - Danville area.

Several tracts of woodland would make nice retreats; Snyder, Mifflin Co's.



KINGSWAY REALTY
REALTORS
1770 Oregon Pike
Lancaster
Phone: 717-569-8701
or Leola 717-656-6717

REAL ESTATE

For Sale - 30 acre farm in Tioga Co., 2 story frame house features 4 bedrooms, kitchen, dining, living room, 2½ baths, 2 car garage, 2 barns, private setting, \$69,500 Call 814-367-5796

REAL ESTATE

2 Greenhouses 30x60' and 60x108', currently set up for hydroponic growing, 11.9 acres, new 3 bedroom house, 1980 Ford heavy duty van, 1980 Yanmar tractor with implements, \$190,000 Al Gerrard 215-384-1157

NEW LISTING

74 A General Farm, 2½ Story Modern house, 4 BR, New 3 car garage Frame bank barn 66x66, New hog barn 28x100 Harvestore silo 28x50 w/ auger Modern butcher shop 40x60 w/truck garage & shop 1 grain dryer 3 Grain Storage bins capacity 33,000 bu 5 mi S of Sunbury near Augustaville Northumberland Co

INVESTMENT PROPERTIES

Modern Bank Rancher w/2 BR & unattached 4 apartment buildings 2 Apts finished & rented, 2 are partly finished On a 2 A plot about 4 mi North of Hershey

5 A Farm house 2½ story immaculate modernized 4 BR, pond, swimming pool Must be seen to be appreciated Along old Rt 22 about 2 blocks South of Rt 78 exit at Bethel

PERRY COUNTY

140 acre modern dairy near Ickesburg, 130 acres tillable, 42 tie stalls, pipeline milkers, 1 20x70 & 1-20x40 Harvestore silos, large metal implement shed & shop Ready for today's dairyman REDUCED TO SELL

110 General farm, Bank barn with an added 1 story was used as a dairy (needs remodeling) All electric dwelling Perry County Northwest of Duncannon

LEBANON COUNTY

24 acres near Frystown, 2½ story 3 bedroom house with modern conveniences, 2 mobile homes, 1 car garage & workshop

38 Acre farm for steer & veal calf operation Building #1 a modern calf starting barn with room for 100 calves Building #2 Concrete block calf barn for growing calves Building #3 Remodeled bank steer barn for 80 steers 4 BR log house with modern conveniences Road Frontage along 2 roads Lebanon Co Northwest of Lebanon near Lickdale ½ mile from Rt 81 exit At Rt 72

BERKS COUNTY

75 acre general farm, 45 acres tillable, 15 acres wooded, 15 acres meadow, 3 bedroom house, large frame bank barn

31 acre farm w/campsite 2½ story dwelling, bank barn room for 160 campers Some full hookup some rented on permanent basis

MONTOUR COUNTY

10 acres, 6 miles North of Danville, opposite PP&L Lake Zoning approved for building An unusual opportunity to get a desirable property viewing a beautiful lake

CUMBERLAND COUNTY

122 Acre Dairy & beef farm Bank barn has been for a dairy operation (needs remodeling), New modern been barn w/100' bunk feeder, silo 24x70 w/unloader Cumberland Co Northwest of Newville

LEHIGH COUNTY

85 acre general farm, lg frame bank barn, modern dwelling w/kit & dining area, LV rm 3 br & bath 75 a tillable, stream & meadow w/road frontage

CLINTON COUNTY

47 1 acres totally wooded, ideal hunting & fishing, borders State Forest land

LANCASTER COUNTY

25 acres between Mt Joy & Manheim, over 1000' road frontage, some tillable, woodland & meadow with stream, no buildings

82 Ac Limestone Soil beef farm, modern beef operation for 200 steers, silo 26x80 w/unloader, 80' bunk feeder, 2 family dwelling with modern conveniences Land is all tillable with long field Lancaster County (NE of Litzitz near Clay)

13 acre farmette between Mt Joy & Manheim, 4 bedroom house, bank barn, garage & implement shed, road frontage on 2 sides

4 88 acre Clay Twp near Project 70 w/24x36 2 story barn, perked and approved for residence

8 acre farmette north of Blainsport, 4 bdrm brick house, lg bank barn with 2 story poultry house, attached room for 9,000 broilers, lg orchard w/30 English Walnut trees An ideal rural setting

10 acres totally wooded near Schoeneck, Pa, 2 bedroom dwelling

9 acre farmette near Adamstown, Pa, 3 bedroom house, bank barn, meadow with stream

77 acre dairy, 39 tie ins and stanchions, extra loafing area for 30 cows, 600 gal bulk milk tank, stream in meadow, 16x50 concrete silo, modern 3 bedroom house

123 acre beef and poultry farm, one 2 story 1 yr poultry house 40x204', room for 15,000 layers, one 2 story layer house 34x60', room for 4,000 layers, lg frame bank barn, set up for steers, lg 4 bdrm brick house, modern home in exc cond with lg rooms, also frame 3 bdrm modern house

Some properties are owner financed to qualified buyers

CHRISTIAN M. MOSEMANN

Real Estate Broker
734 Main Street, Akron, PA 71501
717-859-1004 With 24 hour service
or Paul Z. Musser 717-733-8107
or Paul Smith 717-933-8156
or Emma Gish 717-653-5369
or Dora A. Petrone 717-394-2689