

PUBLIC SALE

FINE VICT. FURN., OAK, WALNUT, PINE FURN., WICKER, ORIENTAL RUG, SIGNED CROCKS, QUILTS, GLASS & CHINA, 1926 CHEV. FIRE TRUCK, ANTIQUE JOHN DEERE TRACTOR, & 1972 CHEV. PICKUP

We will sell selected consignments at our Auction Facility, in Johnsville, just off Rt. #75, between Union Bridge & Libertytown, and 12 miles N. of New Market, Frederick County, Maryland on **LABOR DAY;**

MONDAY, SEPTEMBER 7, 1981

Starting at 9:00 A.M., the following:

3 Pc. Wal. Vict. bedroom suite w/high fancy bed, Vict. Wal. M.T. mirrored buffet w/carving, Sev. Vict. Wal. M.T. tables, chestnut Vict. bed w/Wal. trim, two Vict. cameo back sofas, one w/Orig. hair cloth; Vict. Wal. M.T. dresser & wash stand, brass & onyx stand, Vict. Wal. hoop skirt chair, Vict. arm chair, Wal. Vict. Ext. table w/leaves, Wal. Vict. 5 shelf whatnot, **HEPPELWHITE 2 PC. BANQUET TABLE** w/leaf, oak china cabinet w/bevel glass sides & door, full mirror back & glass shelves; oak dresser & wash stand, open wash stand, spool bed, Sev. early primitive rope beds, Sev. soft-wood blanket chests, Empire chest attributed to & small table signed John Rupp, Hanover, Pa.; Sev. Empire chests, Vict. sleep sofa dated 1881, Mahg. china cabinet w/glass sides & Dbl. bowed glass doors in front, round oak pedestal base table w/claw feet, Sq. oak Ext. table w/leaves, oak slant desk, oak buffet, two hooster type cabinets, Kit. safe, **PINE 2 PC. DUTCH CUPBOARD** 7'9" high, another Sm. 2 Pc. dutch cupboard, painted 2 Pc. flat back cupboard, 2 harness 48" Loom, "Weaver's Friend" built by Reed Manf. Co. & dated 1893 w/8 shuttles, pie safe, flax wheel, spinning wheels, **MAHG. EMPIRE SIDEBORD**, oak & Wal. farm type table, mission oak buffet, iron bed w/brass trim, Sm. C.I. parlor stove dated 1845, **WICKER CHAIRS & ROCKERS, WICKER FLOOR LAMP**, oak "C" roll top desk, D.L. table w/drawer, Mahg. Sect. deck Ca. 1930, deacons bench, reproduction Wal. hutch, drysink & wash stand; reproduction 2 Pc. corner cupboard, many fine chairs & rockers, some in sets; D.L. Ext. table w/leaves, tool chest, good **COAL & WOOD STOVE**, Sev. shelf & mantel clocks, Sev. Pcs. of Rattan Furn., ice cream chairs, child's roll top desk, spool cabinet desk, two pine church benches, oak Lib. table, Wal. cathedral chairs, signed John Bell crock & jug, redware pitcher signed S. Bell & Son, other good signed & unsigned crocks & jugs, baskets, deep Wal. & gold leaf frames, **KARASTAN RUG** Approx. 9'x 12', another Oriental 6'x9', 9'x8' hooked rug, American flyer train, wood churn, C.I. bull dog, brass bucket, brass spitton w/Adv., signed dinner bell, cherry boy & girl, Tiffany type lamp, copper boiler, butchering kettle, **SEV. GOOD EARLY QUILTS**, 2 prints dated 1855, hobby horse, C.I. cupola & weathervane, signed & dated 1894; **LEGAL DOCUMENT SIGNED BY ROGER BROOKE TANEY & DATED 1808**, letter sent to Lt. Col. John McPherson requesting return of muskets from the Frederick Militia dated 1798, Sev. albums of post cards including many Pen-Mar cards, **INFLATABLE ADV. CLOWN CA. 1920**, Nazi items, 1854 \$1.00 gold coin, 10 silver dollars, sword, .35 carat lady's diamond ring, advertising items.

GLASS & CHINA- signed green jade Steuben 6" vase, condiment set, candelabra w/prisms, Sev. Pcs. of flow-blue, Imari bowl, Chinese snuff bottle, cut glass bell, Sev. Pcs. of Noritake, Chinese snuff jar, Sev. Pcs. of Majolica, Sev. Pcs. of Buffalo pottery, Heisy covered dish, Royal Worcester pitcher, Sev. Pcs. of Cloisonne, Nippon, 12 Meakin Blue & White plates, historical plate, 6 Serves 1846 dinner plates signed Dubrie, Chateau St. Cloud; mechanical bank "Jolly Nigger", Aboriginal Chinese hand carved canoe w/oarsmen, 16" long, Ca. 1820, Sev. box lots.

1929 CHEV. FIRE TRUCK, COMPLETE (From Fairfield, Pa. Fire Co.)
1939 JOHN DEERE MODEL B TRACTOR, 1972 CHEV. CUSTOM-10 PICKUP, Serial #CCE142B137568, has been inspected by seller.
TERMS- Cash or approved check on day of sale. Maryland 5% sales tax collected unless Exemption Certificate is presented to clerk. Inspection Sunday Sept. 6, 1:00 P.M. until 5:00 P.M. Sale rain or shine, under cover. Lunch on Sunday & Monday by Johnsville Ruritan Club.

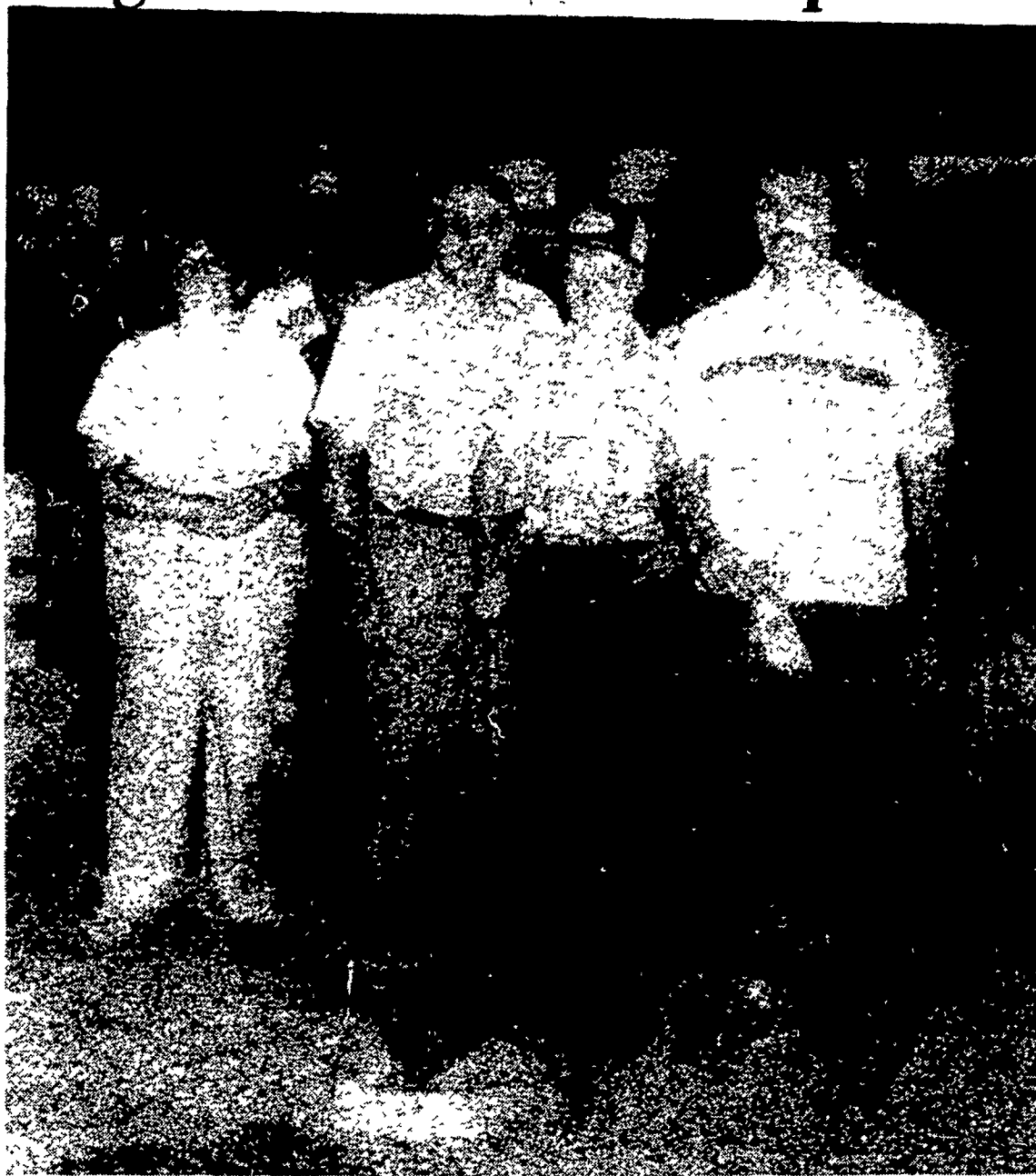
SALE CONDUCTED BY:

AUSTIN BOHN, Auctioneer

PH: 775-7607

Chas. Funkhouser & Ed Sweetman
Auctioneers
John Green Jr. & Jacob Altwater,
Clerks

Burdge shows Grand Champion hog



Brady Burdge, East Waterford, raised and showed the Grand Champion Hog at the Juniata County 4-H Round-up. His hog sold for 3.10/lb. to IGA Foodliner (Dick Berrier, Manager). The runner-up was John Groninger of Juniata Concrete. Also shown is Geri Hancock, a Spruce Hill Pig Club Leader.

Goats For Sale

8 female & 1 male

Lamancha Goats

Various colors - Up to 3 yr. old

SATURDAY, SEPT. 12

Stephen & Claire Day

Harry Bachman, Auctioneer

See full listing page D-27

SOUTHEAST AYRSHIRE SALE

SATURDAY, SEPTEMBER 5

12:00 Noon

Rockingham County
Fairgrounds, Rt. 11 South,
Harrisonburg, Virginia.

Several Fresh Cows

Many Bred Heifers

Due Sept. & Oct.

Project Calves

Dam's of consignments have records to 20,000 milk and over 700# fat.
Cow's with records to 16,000 milk.
Grand champion at 1981 show sells.
For foundation cattle-fall milk-or project calves.

Come to the Shenandoah Valley.

Sale managed by:

BENAYR SALES SERVICE

Donald S. Benson

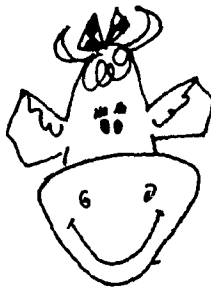
Rt. 1 Box 321

Mt. Crawford, VA 22841

Ph. 703-434-4865

PRO-SIL

Silage Activator



**STEERS AND MILK
COWS LIKE PRO-SIL
TREATED SILAGE
AND SO DO
THEIR OWNERS**



Because It:

- Makes A Balanced Feed Program
- Makes Silage More Palatable
- Preserves Corn Silage
- Has No Urea
- Reduces Feed Cost
- Makes Farmers Money
- Makes Maximum Efficiency of Corn Crop

GET THE FULL STORY FROM YOUR PRO-SIL DEALER

MARTIN'S

AG SERVICE

Box 716, R.D. 1
New Holland, PA 17557
Ph: 717-354-5848

HOLLINGER'S

FARM & HOME SUPPLY

35 N. Cedar St.
Lititz, PA 17543
Ph: 717-626-2330