

Farming's roaming photographers

BY DONNA TOMMELLEO

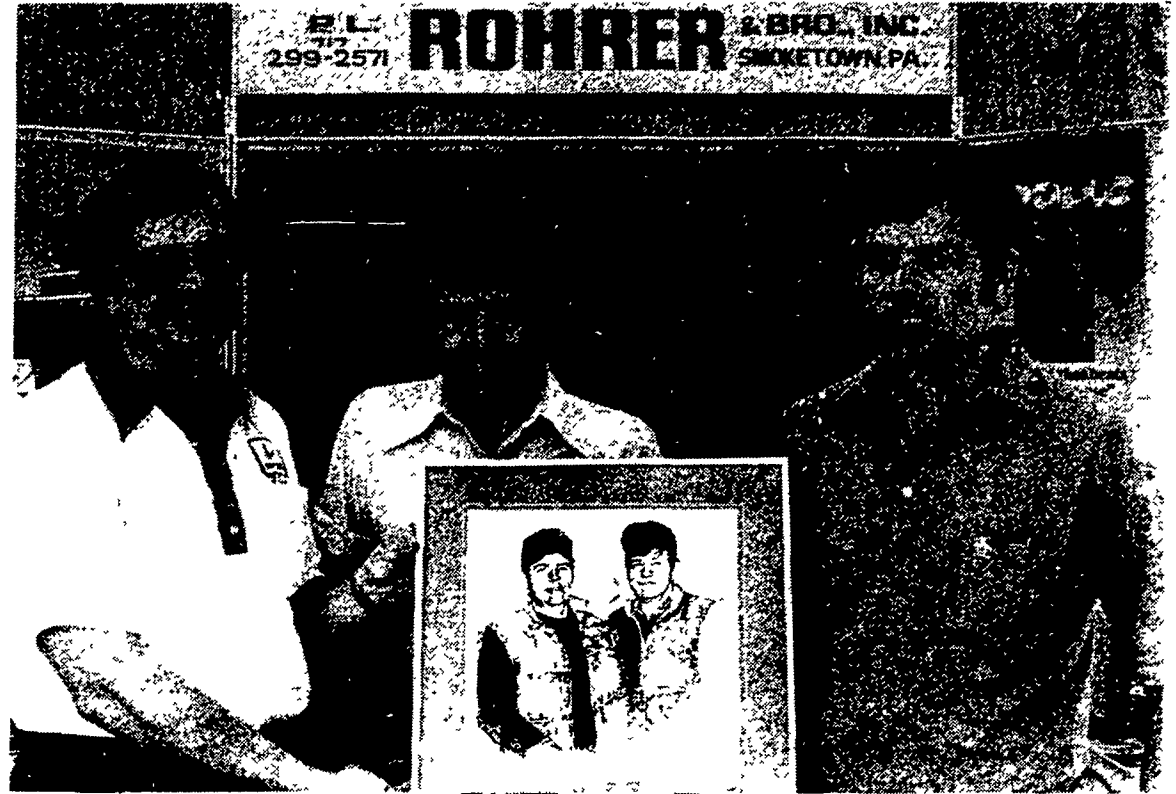


ors draw near the corn
ook.

ry



Dennis Shenk, Millersville, and Eric Walters, 13, Lancaster watch chopped corn come and go from a wagon into a silo bag via a side conveyor.



The first place Alfalfa Grower's Award for 1980, a framed picture of the winners sketched by an artist, was given to Harold (center) and Norman Davis (right) of Huntingdon. The Davis' own and operate Daland Farm. Presenting the award is Jerry Roman from

P.L. Rohrer, a distributor for Apollo Alfalfa from North American Plant Breeders. The award is co-sponsored by the Pennsylvania Grasslands Council and the Penn State University.

Not everything was new

Something for everyone



ith passing glances of
and.



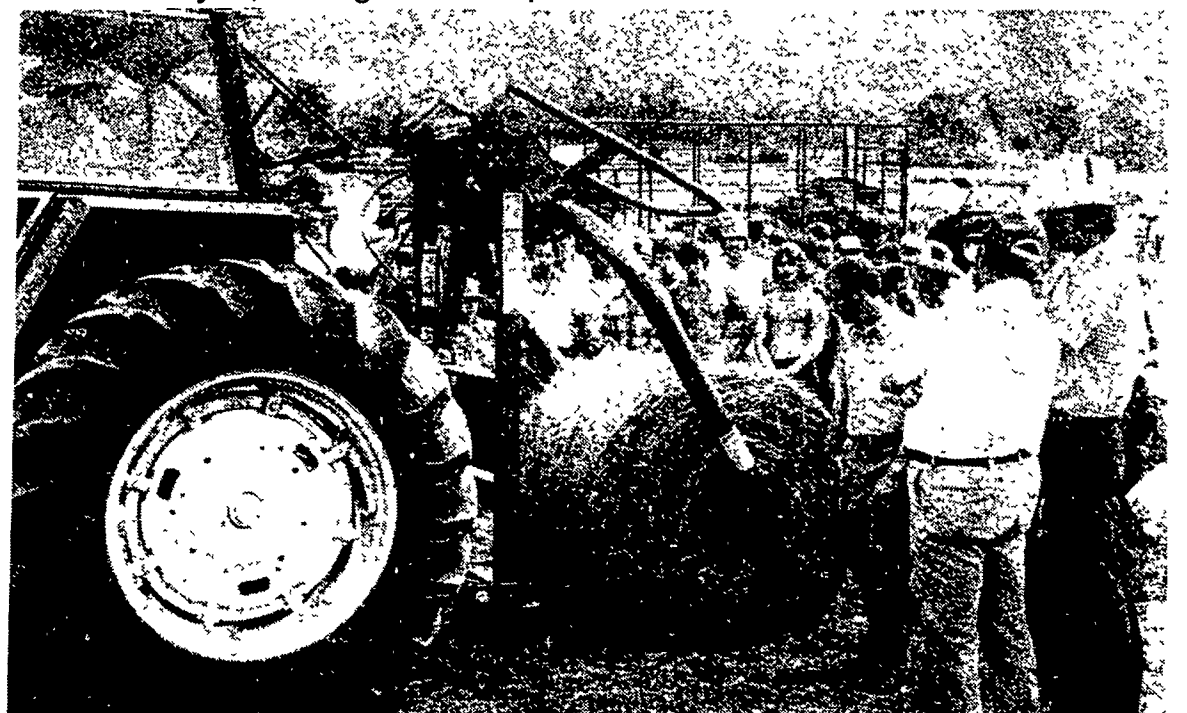
Soil Conservationist Bill Stoner, right, explains the merits of "concrete mattress" as a conservation practice. Made of nylon fibers and grouting concrete, the mattress helps prevent erosion.



The popular Pasto Museum, opened for the first time last year, once again offered spectators fews and memories of yesteryear.



picnic table. From left
cludes Sam Robbins,
wman and Joan and



As part of the machinery demonstrations held periodically each day, the hay making demonstration drew one of the largest crowds. The major attraction, other than each model's performance, seemed to be those big round hales - of interest to young and old alike.