

Livestock market and auction news

Weekly Summary

Friday, August 28

Report supplied by PDA

CATTLE: 6247. Compared with 6522 head last week, and 6812 head

a year ago. Compared with last week's market: Slaughter steers grading Choice steady to 1.50 higher, Standard & Good steady to 1.00 lower; Sl. heifers steady to 1.00

lower; Sl. cows steady to 1.00 higher, late week sales 2.00-3.00 higher, spots 6.00 higher; Sl. bullocks 1.00-2.00 lower; Sl. bulls 1.00-3.00 lower. Sl. steers: High Choice & Prime No. 3-4, 68.50-72.85; Choice No. 2-4, 64.00-69.50, Good 58.00-62.85, few 64.00; Standard 52.00-57.85. Sl. heifers: Choice 59.00-63.00; Good 53.00-60.00; Standard 48.00-53.00. Sl. cows: Utility & Commercial 44.50-50.00 late sales 52.50. Cutters 42.00-45.50 late sales 49.50; Canner & L. Cutter 36.00-42.50 late sales 45.75; Shells down to 25.00. Sl. bullocks: Choice 58.00-61.50; Good 54.00-59.00; few Standard 51.00-54.00. Sl. bulls: Yield Grade No. 1, 1000-2000 lbs. 50.00-58.50 few 64.50; Yield Grade No. 2, 900-1600 lbs. 45.00-53.50.

FEEDER CATTLE: Steers, Medium to Large Frame No. 1, 300-600 lbs. 49.00-58.00. Bulls, Medium Frame No. 1, 400-600 lbs. 47.00-58.00.

CALVES: 4087. Compared with 4126 head last week and 4207 head a year ago. Vealers steady to 5.00 higher. Few Prime 101.00-118.00; Choice 85.00-103.00; Good 70.00-88.00, 90-110 lbs. 50.00-63.00; 65-90 lbs. 45.00-60.00; Utility 50-110 lbs. 35.00-54.00.

FARM CALVES: Active Hol. Bulls 80-125 lbs. 62.00-103.00, mostly 70.00-92.00; Hol. Heifers 80-150 lbs. 70.00-170.00 mostly 85.00-120.00.

HOGS: 7362. Compared with 6955 head last week and 8176 head a year ago. Steady to 1.00 higher. US No. 1-2 200-240 lbs. 53.00-54.25, few 54.75. No. 1-3 200-250 lbs. 51.50-53.00; No. 2-3 200-275 lbs. 50.00-51.50 few down to 47.00; No. 1-3 140-190 lbs. 48.00-50.00; Sows .25-1.00 higher; US No. 1-3 300-585 lbs. 43.00-48.75;

No. 2-3 300-650 lbs. 39.00-45.00 Boars 32.00-42.00.

FEEDER PIGS: 1153. Compared with 1223 head last week and 1962 a year ago. 2.00-3.00 higher; US No. 1-3 20-35 lbs. 15.00-29.00 per head; No. 1-3 35-50 lbs. 22.00-39.00; No. 1-3 50-80 lbs. 34.00-46.00.

GRADED FEEDER PIGS: 2537. Compared with 1791 head last week, and 2673 head a year ago. All sales by CWT. Feeder Pigs very uneven, extremes 10.00 higher to 7.00 lower, US No. 1-2 25-40 lbs. 84.00-105.00, 40-50 lbs. 84.00-105.00, 40-50 lbs. 80.00-98.00, few 106.00, 50-60 lbs. 79.00-95.00, 60-80 lbs. 65.00-86.00; US No. 2-3 25-40 lbs. 77.00-100.00, 40-50 lbs. 74.00-90.00, 50-60 lbs. 70.00-88.00.

SHEEP: 750. Compared with 822 head last week and 826 head a year ago. Steady to mostly 3.00 lower. Choice 65-105 lbs. 54.00-65.00, few 74.00; Good 50-90 lbs. 48.00-55.00; Utility 45-80 lbs. 42.00-50.00. Sl. ewes: 15.00-32.00, few down to 9.00.

Ephrata readies for annual fair

EPHRATA — Preparations are underway once more for the opening of the 63rd Ephrata Fair beginning Tuesday, September 22 and continuing through Saturday, September 26. A tradition, originally celebrating the homecoming of World War I veterans, has grown into Pennsylvania's largest steer fair drawing over 200,000 persons each year.

The parade, highlighting the five day affair, begins its march through the streets of Ephrata at seven o'clock on Wednesday evening, September 23, (rain date - September 24.)

Drawing over 65,000 viewers each year, the parade consists of well balanced blend of high school bands, marching groups, and numerous floats. Also positioned throughout the parade are the lovely Miss Lancaster County Pageant Contestants. Marching last, the Warwick High 1981 Honor Band, will close the parade with a presentation in front of the viewing stand on Lake Street.

Featured throughout the week are various displays of crafts, needlework and farm produce brought in by exhibitors from Ephrata and surrounding communities.

The J.J. Newberry Store will be housing the baked, canned and dried goods, jellies, flowers, and crafts.

Art work will be on display in the Texgas Corporation Showroom on South State Street. The former Reading Co. Station on East Main Street will exhibit 4-H clothing, needlework, etc. The vegetable, fruit and nut tent will be set-up to the rear of the railroad station. Due to a successful 1980 exhibition, the Photography Department

returns and will be located in the basement of the J.J. Newberry. For further information on all exhibits, entry times and locations, check the Ephrata Fair Premium Book.

"Tent City", the agricultural portion and foundation on which the fair was built, is located in the Ephrata Community Park. Serving as temporary host to the baby beef, cattle, swine and poultry, "Tent City" becomes the main point of interest during the judging of the livestock.

Also on display to the public are tobacco, grain, forage, various farm exhibits and mini displays by youth groups. For the convenience of the public, a shuttle bus will again be provided, free of charge, to "Tent City" on Tuesday, Thursday and Friday.

On Thursday afternoon, between one and six o'clock, the Ephrata Fair rolls out the red carpet for all school age children, with a friendly clown welcoming all youngsters to the fair. Since this is "Kiddies Day", every child is given special reduced rates for rides, including some old favorites like the ferris wheel and merry-go-round.

As in past years, the Baby Parade will be held Saturday afternoon at 2 p.m. Consisting of various floats and colorful costumes, the little competitors and a delightful note to the afternoon.

Climaxing the week's activities is the Miss Lancaster County Scholarship Pageant to be held in the Ephrata High School Auditorium on Saturday at 8 p.m. As a forerunner to the Miss Pennsylvania Pageant, the contestants will compete in various categories including talent and poise.

ELMER M. SHREINER T/A GOOD'S FEED MILL

RD 2, New Providence, PA
PH: 717-786-2500

PENNFIELD

Good Products
Often Overlooked
Too Many Times
To Day Make
Unsatisfactory Profits

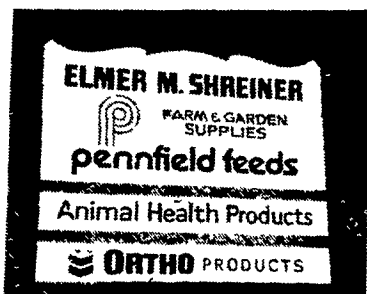
For A
Better
Operation
Demand An

Elmer
Shreiner
Salesman
To Help You

ANIMAL FEED



Your Route Salesman
RICHARD IBACH





KEROSUN
OMNI
105
Reg. \$295



\$232

SALE
* 1 YEAR GUARANTEE
* All other models at Discount Prices Also.

UL LISTED

SALES AND SERVICE

Bowman's Stove Shop, Inc.

R.D. 3, Napierville Road Ephrata, PA 17522
Follow the signs from the light at Hinkletown

Tues., Wed., Sat 9-5
Thurs., Fri. 9-9
Monday - Appointment Only

717-733-4973
Financing Available




- BARN PAINTING
- ROOF PAINTING
- BIN PAINTING
- MASONRY & EPOXY COATING



- Sandblast preparation

Barn Painting In Lanc., York, Adams, Harford, Baltimore, Carroll & Frederick Counties

All work is guaranteed satisfactory.
"Call the Country Boys with the Country Prices"



GEBHART'S
SPRAY PAINTING
AND SANDBLASTING

Agriculture - Industrial - Commercial
Box 145A, R.D. 4
Hanover, PA 17331
Ph: 717-637-0222

FARMER BOY AG INC.

DISTRIBUTORS FOR:

BEACON STEEL PRODUCTS



Adult Turkey Feeder

"45 Years of Manufacturing For The Poultry Farmer"

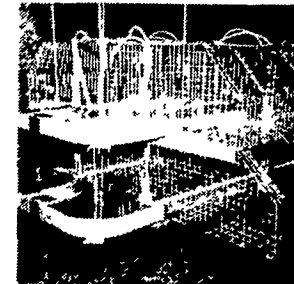


Broiler Pan Feeding System

Featuring Equipment For:

TURKEYS AND BROILERS

- ★ DICKISON LAYING CAGES: Two Deck and Three Deck, Hanging or Leg Stands
- ★ DICKISON BROOD-GROW CAGES: Flat Deck, Two and Three Decks, Hanging & Leg Stands



Pullet Grow Cage System



Flat Chain Feeding System

Swine and Poultry Systems

FARMER BOY AG. INC.

Best in Design, Price and Experience

457 E. MAIN AVE., MYERSTOWN, PA 17067

1/2 Mile East of Myerstown

Call 717-866-7665 For An Appointment or Stop By Our Office. Our Trained Staff Will Do Their Best To Assist You With Layout And Design.