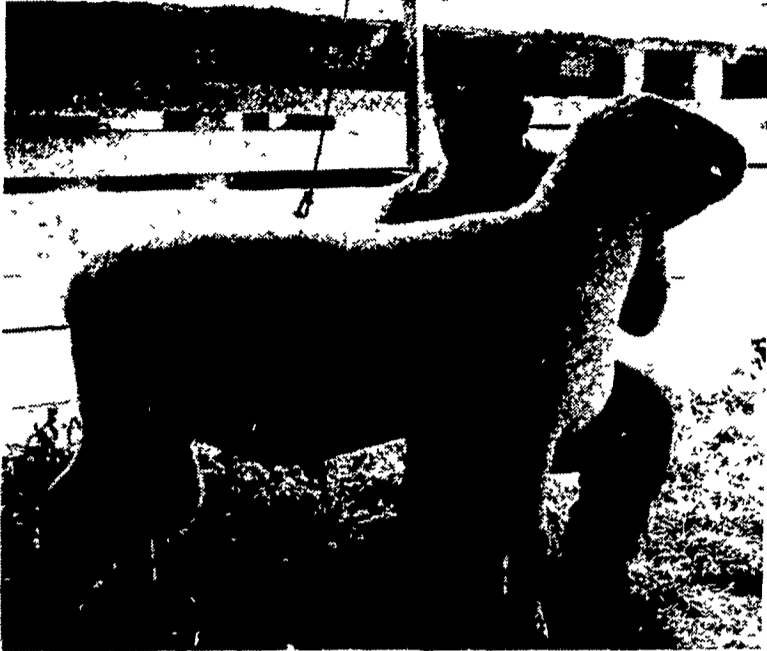


Breeding sheep



Bob Leib holds the champion Shropshire ram owned by Spring Bottom Farm, Becky Darcey, Fairfield.



Champion Suffolk ram and ewe were exhibited by Pine Haven Farm, Newville.

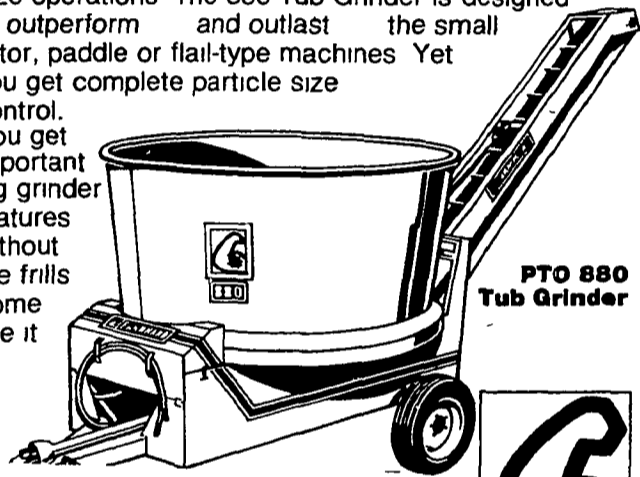


Champion Dorset ram and champion Dorset ewe are owned and bred by Shepherd's Crook, Bob and Susan Leib, Mechanicsburg.

880 ECONOMY TUB GRINDER

STRETCH & CONSERVE FEED AT AN ECONOMY PRICE.

Now tub grinding is practical for small to medium size operations. The 880 Tub Grinder is designed to outperform and outlast the small rotor, paddle or flail-type machines. Yet you get complete particle size control. You get important big grinder features without the frills. Come see it.



PTO 880 Tub Grinder

M.M. WEAVER & SONS, INC.

Leola, PA 17540
Ph: 717-656-2321



ELECTRIC FENCERS

PARMAK SOLAR-PAK, 6 & 12 Volt Bat. Operated

America's first solar-powered electric fence. Solar-Pak by Parmak eliminates the need of expensive battery replacement or inconvenient recharging. For the first time you can have power line convenience in a battery fence. Solar-Pak will operate for 21 days in total darkness. Weatherproof, outdoor model. Complete with sealed Gel battery. UL listed.

6 VOLT: \$144⁹⁵
12 VOLT: \$249⁹⁵
w/out Panel: \$74⁷⁵

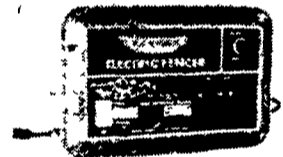
The Magnum 12 Volt model is a solid state Electronic Fencer, equivalent to the MII Electric Model.



PARMAK MULTI-POWER MARK II (Model M11)

110-20-V. AC Operation
The second generation Mark II fence. Designed for maximum output and energy conservation. Completely electronic solid state fence — no moving parts. Shocks through wet weeds and brush — will not short out. Greatest advancement in electric fencing in 25 years. The fence of tomorrow — here now! Patent Pending. UL listed.

ELECTRIC MODEL:
\$53.95



IF YOUR LOCAL DEALER DOES NOT HAVE IT, CONTACT:

PEQUEA BATTERIES

RONKS, PA 17572
Distributor & Warranty Station for PARMAK



ZOOK MOLASSES CO.

Offers
MOLASSES FEEDING PRODUCTS FOR ALL ANIMALS

- Liquid Feeding Cane Molasses
- Honey Brook Brand Dried Molasses
- Z Brand Dried Molasses
- Honey Brook Energiblock - All Natural 20 - No. Urea
- Energiblock - Hi Protein 36
- Energi Cubes for Horses

GOOD FOOD INC.

GOLDEN BARREL Household Molasses and Syrup

- | | | |
|-------------------|---------------------|-----------------------|
| ★ BAKING MOLASSES | ★ BARBADOS MOLASSES | ★ BLACKSTRAP MOLASSES |
| ★ PANCAKE SYRUP | ★ HONEY | ★ TABLE SYRUP |
| ★ CORN SYRUP | ★ SORGHUM SYRUP | ★ SHOO-FLY PIE MIX |

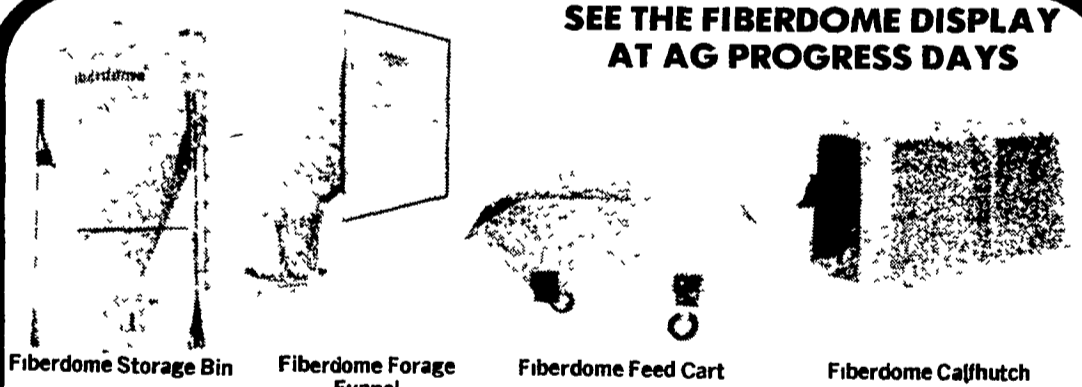
MOLASSES FOR THE ANIMAL or THE KITCHEN

Contact:

ZOOK MOLASSES CO.

WEST MAIN ST., BOX 160, HONEY BROOK, PA. 19344
Phone 215-273-3776 or 717-393-3987
Call toll free in area code 215 & 717: 800-662-7464

SEE THE FIBERDOME DISPLAY AT AG PROGRESS DAYS



Fiberdome Storage Bin

Fiberdome Forage Funnel

Fiberdome Feed Cart

Fiberdome Calfhutch

MADE TO LAST WITH FIBERGLASS — from FIBERDOME

Fiberglass is practically dent proof. Stands up to long periods of hard use. Contents stay fresh because fiberglass absorbs little or no heat. Because there is very little condensation on the inside, moisture cannot alter the contents of material being stored. Fiberglass is rust resistant. Acids and salts can't hurt it.

Economical to Use • Simple to Install • Easy to Operate • Eliminates Dirty Chutes • Directs Flow of Feed • Saves Wear on Silo Chutes • Adapts to Any Make Silo

The only all fiberglass feed cart • Buff exterior white gel coat interior • 14 bushel capacity (4.93 Hectoliter) • Immune to silage acids does not rust • Easy to load unload and sanitize • Tricycle gear with one swiveling caster • Length 68 1/2" • Width 31 1/2" • Hopper depth 23 1/2" • Tire Diameter 8"

Insulation value provides warmth in winter while remaining cool in summer • Hutches may be nested for compact storage • Hutches are easily moved by use of firmly imbedded bolts • Studies show respirator problems, disease and calf mortality are reduced when hutches are properly used

Fiberdome INC. ...made to last
P. O. Box 11 Lake Mills, WI 53551

For more information contact your nearest dealer

PHILLIPS FEED SERVICE INC.
Germansville, PA
215-767-3819
Bath, PA
215-837-6061

THOMAS DUNLAP
Rt 220, Jersey Shore, PA
717-398-1391

MONT-BUCKS FARM BUREAU CO-OP ASSN.
Souderton, PA
215-723-4355

FARM BUREAU
Millinburg, PA
717-966-1047

NORTHERN STAR SILO
Watsontown, PA
717-649-5151

DEVRIEZE FARM EQUIPMENT
Milanville, PA
717-729-7988

GUTSHALL'S SILO REPAIR WORK
Womelsdorf, PA
717-933-4616

TERRE HILL SILO CO., INC.
Terre Hill, PA
215-445-6736

SOLLENBERGER SILO
Chambersburg, PA
717-264-9588