

# Huntingdon Co. DHIA

(Continued from Page D38)

Behrer Farms					
26	3	6-6	305	20,415	814
89	3	5-0	305	17,283	781
4	3	5-0	305	17,601	768
221	3	5-11	305	18,598	683
83	3	4-0	294	18,083	590
Wayne Friling					
Becky 13	3	5-6	305	19,720	800
Rose 5	3	8-1	305	17,692	715
Bear	3	4-2	288	16,082	696
Tana 12	3	5-0	305	18,216	692
Bonnie	3	1-11	305	13,624	656
47	3	10-1	305	14,138	624
94	3	2-0	305	14,610	623
Lakevue Farms					
Maria	3	6-8	305	23,745	795
Marie	3	5-1	305	17,247	694
Rosebud	3	9-2	305	19,342	610
Glenn E Smith					
Hazel	3	5-11	305	19,434	788
Sangrey Brothers					
65Gill	3	8-11	305	18,985	782
142Kell	3	5-0	305	20,148	727
10Kris	3	3-0	305	16,597	716
11Clrk	3	6-11	305	19,642	706
112Suzy	3	3-6	305	15,206	694
Roland G Yoder					
Sally	3	5-10	305	22,036	767
Aline	3	3-3	305	17,347	705
Andra	3	4-9	305	18,141	671
Evelyn	3	5-1	305	17,776	664
Dina	3	7-11	305	19,668	645
Lily	3	5-4	305	16,210	637
Jov	3	9-8	305	16,949	614
Mabel	3	3-7	305	15,584	600
Pamela	3	3-4	305	17,313	596
Willard Yoder					
108	3	2-11	305	18,334	760
86	3	4-10	305	19,295	756
59	3	4-8	305	17,948	687
19	3	4-4	305	20,677	671
68	3	4-11	305	14,675	656
193	3	4-8	305	17,127	617
98	3	4-10	305	16,185	604
81	3	5-8	305	18,698	567
Max Isenberg					
JG	3	5-11	305	21,443	753
Locust Lane Farm					
Pooly	3	13-6	305	18,822	751
Y5	3	4-10	305	19,363	672
O103	3	3-1	305	15,373	664
Shirley	3	8-9	298	18,308	645
O101	3	2-2	305	17,226	624
Y96	3	4-5	305	17,005	575
Branstetter Farms					
Pam 216	3	6-6	305	21,449	749
Nancy	3	3-7	305	20,336	629
Glenn Peachey					
Hannah	3	5-3	305	20,128	748
Sadie	3	5-4	305	19,171	693
Lilly	3	5-8	305	20,220	668
Toni	3	3-4	305	17,298	649
Glenn E Houck					
OR 65	3	6-6	305	22,463	736
118	3	3-2	305	20,819	700
3	3	3-1	305	20,296	545

State Correctional					
5861	3	5-5	298	16,414	735
375	3	2-2	305	17,670	629
Geary E Shade					
Marge	3	4-8	305	23,320	733
Harold A Moyer					
21	3	6-5	305	16,929	718
81	3	2-6	305	14,334	614
138	3	5-5	305	18,107	613
Philip A Yohn					
5461	3	5-8	305	16,561	716
Gibboney Farms					
Amy	3	3-11	305	17,681	710
Candy	3	3-11	305	20,584	688
Polly	3	5-1	293	15,738	669
Bell	3	4-2	299	17,036	566
Chester & Carole Smith					
A 38	3	6-7	305	16,288	703
95	3	4-5	296	16,145	629
Durbin Farms					
Tui	3	5-1	305	18,788	695
Cookie	3	5-1	305	18,210	689
Tag	3	8-9	305	18,090	687
J Frederick Kyper					
Debby	3	3-5	305	17,484	695
Jefferson R Byler					
Treasur	3	5-2	305	16,831	694
Daisy	3	5-9	300	19,224	676
Vera	3	8-4	305	19,243	654
Jet	3	4-9	305	17,242	628
Sidney R Ormsby					
61Hann	3	6-7	305	17,590	690
Joseph H Hicks					
241	3	2-1	305	14,809	689
136	3	6-6	290	17,109	617
93	5	6-6	305	14,622	617
240	3	2-3	305	13,890	606

# Lancaster Farming, Saturday, August 22, 1981—D39

Raymond Tussey					
Angie	3	4-4	305	17,256	688
Cookie	3	4-5	305	18,518	671
Merry	3	4-6	305	16,573	620
Parsons Brothers					
33	3	6-3	305	18,187	687
Blacklog Mountain Fm					
Tammy	3	8-4	305	19,525	682
Globe Run Farms					
Lulu	3	4-7	305	19,169	681
Fritzi	3	2-2	305	15,291	603
Joseph C Knarr					
Dummy	3	0-0	305	17,337	679
Joseph M McMath					
Elissa	3	7-0	298	15,718	675
Kenneth/Betty Weber					
26	3	0-0	305	19,298	665
Dennis P Hardy					
Pearl	3	4-8	305	15,441	661
N & N Farm					
Y 51	3	5-9	293	15,944	651
Y 86	3	4-10	305	17,728	616
O 67	3	2-10	305	15,991	603
John C. Goshorn					
Connie	3	6-9	305	16,651	647
Breezy Hollow Farm					
Victori	3	6-0	290	17,574	644
John W Middaugh					
Sally	3	8-3	305	15,143	622
Luther J Shields					
Esther	3	5-9	305	14,609	618
Ezra S Zook					
Babe	3	4-11	305	14,712	608
Gensimore Farms Inc					
43	3	6-5	295	16,897	605
17	3	8-5	305	17,607	597
Eberle Brothers					
Beth	3	5-6	305	18,088	603

## USDA proposes changes in marking meat products

WASHINGTON, D.C. — Requirements for the sale, transportation and marking of certain meat products would be simplified under a rule proposed by the U.S. Department of Agriculture.

Donald L. Houston, administrator of USDA's Food Safety and Inspection Service, said the proposal is intended to reduce the paperwork requirements imposed on the meat industry in the transportation of edible and inedible meat food products.

Under the proposal, the food safety and inspection agency plans to delete two shippers' certificates currently required for the transportation of U.S. inspected and passed meat and meat food products.

The proposal also would expedite the return of alleged adulterated or misbranded meat products by retail stores to slaughter or processing plants by revoking a special permit now needed to accompany the products. In its place, the proposal would require that oral permission be obtained from the federal supervisor of the area in which the plant is located.

Houston also said that the present meat inspection regulation

requiring certification of inedible meat or meat food products is unnecessary since required denaturing or labeling properly identifies the product as inedible. This certification would be eliminated under the proposal.

Written comments should be sent by September 29 to Regulations Coordination Division, Food Safety and Inspection Service, U.S. Department of Agriculture, Attention: Annie Johnson, Food Safety and Inspection Service, Room 2637, South Agriculture Building, Wash., D.C. 20250.

### Westfalia introduces the New "Time Saver" Crowd Gate

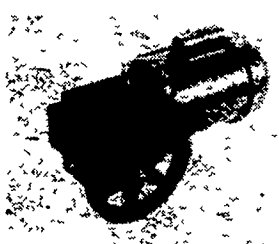
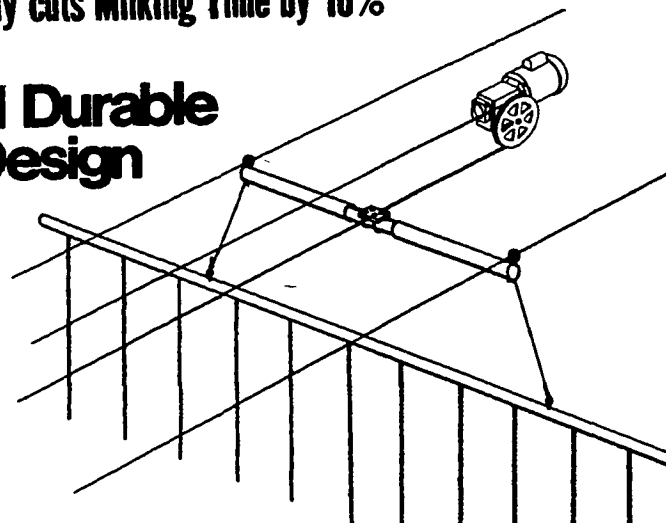
"Effectively cuts Milking Time by 10%"

#### Lightweight and Durable with Practical Design

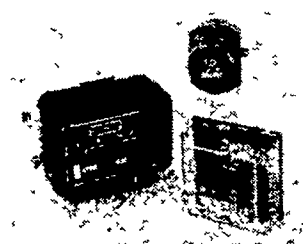
Built-in practicality with all permanent components, mounted separate from the gate, the "Time Saver" Crowd Gate can be economically installed in any cow holding area with side or rear access.

Light weight and easy to install. It has no "track" to run on, thus eliminating the need for reinforced fencing or support rails.

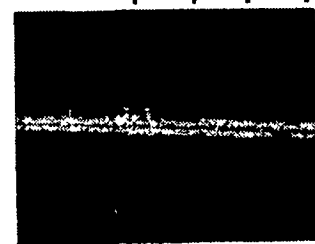
The height of the cow holding area may vary depending on your type of cleaning equipment. But the "Time Saver" Crowd Gate can go as low as practical for your installation.



**Drive Mechanism with Limit Switches**  
Full control with heavy duty drive mechanism, with forward and reverse Positive limit switch control.



**Bell Signal, Electric Charger, Control Box**  
Bell Signal Box, Electric charger and Control Box assure positive gate control.



**5' and 10' Gate Extenders and 25' Length Extender**  
Adapts easily to fit your needs. Allows for more versatility for various size holding areas.

#### OTHER EQUIPMENT AVAILABLE

- Show Ease Stalls
- Cow Mats
- Zimmerman Ventilating Fans & Controls
- Vacuum Pumps
- Automatic Take Offs
- Motorized Feed Carts
- Hand Feed Carts
- Liquid Manure Spreaders
- Manure Scrapers for Poultry & Free Stall Operations
- Manure Augers, both power takeoff & motor driven

WE DO ALL TYPES OF INSTALLATIONS - PARLORS, ETC.

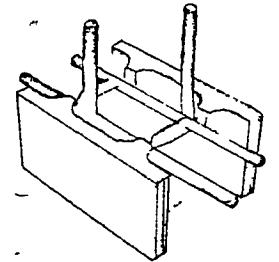
## CLYDE C. LUTZ

1316 Apple Street, Ephrata, PA 17522  
717-738-1718 or answering service 733-1224

AUTHORIZED BODMIN DEALER FOR DAUPHIN, LEBANON & BERKS COUNTIES

### MANURE PITS

- Sewage Systems
- Complete Excavating Service
- Snow Removal



THE "OPEN END" IVANY BLOCK ▶



### Dynamic Masonry Contractors

Gordonville SPECIAL FARM PRICES 717-687-6801  
MIKE FISHER & LARRY HERR FREE ESTIMATES

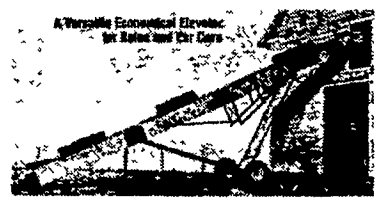
## ZIMMERMAN

MANUFACTURING CORP.

HOLLANDER RD, RD3  
NEW HOLLAND, PA 17557  
717-354-9611

### ATTENTION DAIRYMEN:

Now Available AUGER SYSTEMS FOR EMPTYING MANURE HOLDING PITS



PORTABLE ELEVATORS

AIR-O-MATIC VENTILATION SYSTEMS

