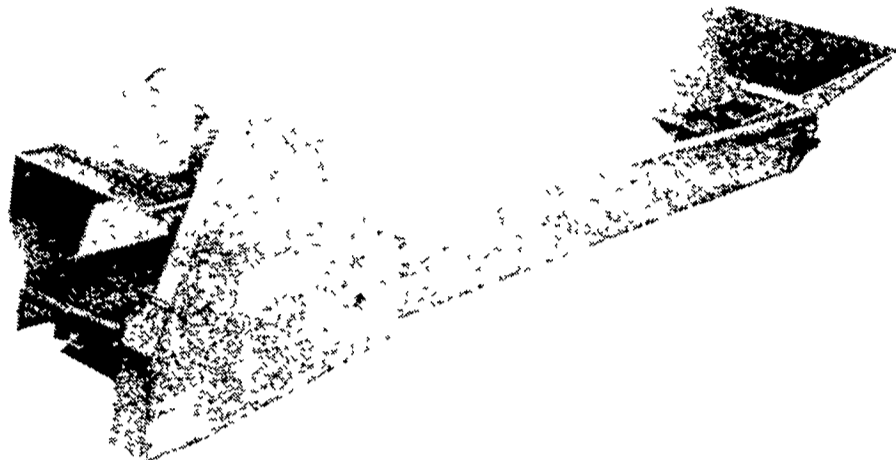


Fill your needs with BONITA high capacity heavy duty single chain feed conveyors



BONITA feed conveyors are built for endurance and convenience

SUPER-TOUGH CONSTRUCTION MEANS TOP PERFORMANCE YEAR AFTER YEAR! Bonita single chain feed conveyors offer capacity and endurance to spare. Their extra wide 10¼" troughs combine with rugged 16 gauge steel frame, even heavier gauge head and base sections and special reinforcements at points of greatest stress to withstand heaviest service.

And check these additional strong points

- heavy-duty roller chain final drive stage
- self-cleaning base section... avoids stoppage due to pockets of frozen material
- sealed ball bearings on large 1-1/8" dia. head and foot shafts
- special sprockets with relief at tooth roots to help prevent buildup of materials
- totally enclosed chain return for maximum safety; also eliminates feed carryover
- easy parts replacement with all bolted construction
- low operating, maintenance costs
- conveying lengths up to 44 feet

Kraiburg Happy MooMats Keep Cows Happy, Resting, and Profitable!



The installation of our mats in your cowshed doesn't just save you time, which is money, it helps your herd give more milk, which means added profit! And more! Just look at these features

Elastic comfort surface Our advanced rubber chemistry and design groups have developed a surface and a rubber understructure that provides a pleasant lying surface and results in noticeably increased milk yield. (University testing has shown that increased milk yield results from increased lying time.)

"Sure-grip" textured tread surface Specially developed tread surface gives solid footing protection against udder injuries, abrasions and sore hocks

Grooveless surface provides easy cleaning Pebbled surface has no grooves to retain urine or manure washes easily, dries quickly with minimum effort.

Sanitary non-porous texture. Resists barnyard acids, trapping of bacteria and disease. Reduces barn odors. **Saves bedding materials** Provides safe, sanitary lying comfort for cows. Reduces yearly bedding costs by up to \$7,000.00 per 100 cows.

Excellent heat loss resistance -Keeps cows' body heat from dissipating. Thermal insulation action rejects cold and dampness from concrete underflooring and minimizes mastitis.

No bulging, edge cracks, hair cracks Superior compounding and proper thickness provide insurance against wear, aging and loss of service.

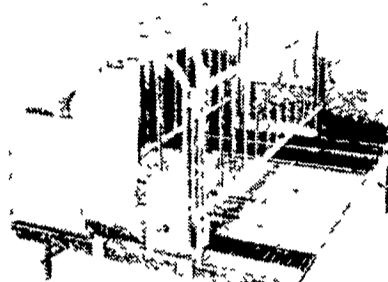
10 Year Warranty Program Because Kraiburg products are the result of better rubber technology and because they are carefully manufactured and have been thoroughly laboratory and field tested, we back every mat with a Ten Year Warranty.

That is our story. A product to make cows comfortable. A product to make life easier for the dairyman and more profitable.

IDEAL[®]
Livestock Equipment
P.O. Box 458 • Jefferson, Iowa 50129 U.S.A.

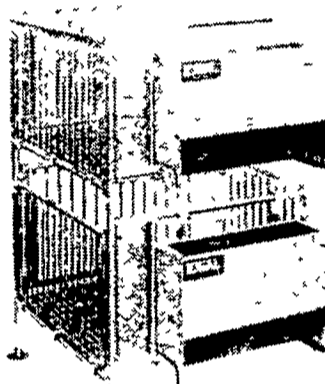


RAISED CRATE DECK



- Increase profit by reducing stress and death loss. Farrow pigs off cold floor.
- Allows economical conversion of existing facilities for crate use.
- Stainless steel or galvanized steel slats or Sani-Deck available.

STACKED NURSERY PENS



- Expand production fast in new or existing buildings.
- Handle up to 10 pigs in 4 ft. x 4 ft. pen or up to 20 pigs in 4 ft. x 8 ft. pen.
- Large six-opening feeder will handle both pen sizes and is easily removed for cleaning. Feeder is 30½ in. long and 23 in. high with long-lasting stainless steel trough.



FEED EASY

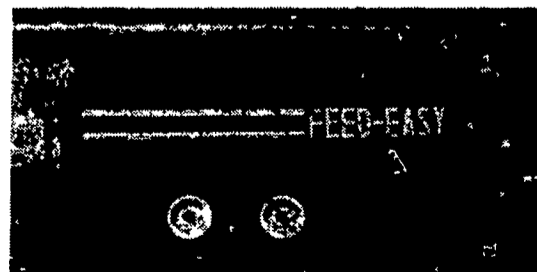
Waste Management



Slinger Manure Tank. Low, straight-back, 180° spread pattern. No messy blowback on operator. Up to 40' swath. 24" diameter fill hole. Full length beam supports. Tough walking beam undercarriage. Available in 1500, 2250, 3000 gallon models.



High Pressure Centrifugal Pump This pump is specifically designed to get all those really hard to reach spots in livestock manure systems. The pump will develop up to 70 p.s.i. pressure to help break solid deposits for easier loading. The pump will agitate, transfer or load manure at a rate of up to 2,500 gallons per minute.



Vacuum Manure Tank Powerful vacuum/pressure pump with simplified valve system automatic reliefs. Separate intake and discharge ports. Proven undercarriage with walking beam suspension. Low uniform swath with controlled coverage. 1500 2250 3000 gallon models.

SEE ON DISPLAY AT
AG PROGRESS DAYS
AUG. 25, 26, 27

RYDER SUPPLY
CO.

P.O. BOX 219, 539 FALLING SPRING ROAD
CHAMBERSBURG, PENNSYLVANIA 17201
PHONE 717-263-9111