

Ag Progress Days features agriculture of the '80s

UNIVERSITY PARK — Equipment and techniques needed by American farmers to produce food in the 1980's will be displayed at Penn State's Ag Progress Days August 25 to 27, according to Samuel H. Smith, Dean of the College of Agriculture.

The show, recognized as the largest outdoor educational event for agriculture in the East, will take place at the Rock Springs Agricultural Research Center, along Route 45, nine miles west of State College.

"The modern equipment that you will see, the cultural practices demonstrated, and the research reflected at Rock Springs are all forerunners of commercial food production in the years ahead," Smith stated.

The theme of the three-day show this year is "Agriculture—Depend On It!" The program, as in the past, is sponsored by Penn State's College of Agriculture in cooperation with many statewide

ag-related agencies, organizations, and businesses.

Activities will include agricultural production practices, home and family living demonstrations, youth and recreational events, wildlife and forestry management practices, and bus tours to plant research and soil and water conservation sites.

There will be a College of Agriculture tent, a theatre tent, educational and commercial exhibit tents, a state hay and silage show, and programs designed for both rural and urban families.

Many legislators and special groups are making plans to tour and inspect the show. Ag Progress Days officials expect crowds in excess of 40,000 during the three days.

No parking fee is charged and the show hours are 9 a.m. until 5 p.m. Tuesday, August 25, and Thursday, August 27—and from 9 a.m. until 7 p.m. on Wednesday, August 26. Food stands will be in operation on the grounds.



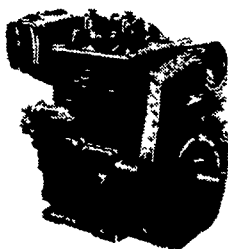
OVER ONE HALF CENTURY OF SALES & SERVICE

TERRE HILL SILO CO., INC.
TERRE HILL, PA 17581

- ★ TRI RIB CONCRETE STAVE SILOS
 - ★ PATZ FEED & MANURE EQUIPMENT
 - ★ SERVICE FROM A WELL STOCKED PARTS DEPT.
 - ★ FIBERGLASS SILO PARTS & CALF HUTCHES
 - ★ EXPERT SILO REPAIRS
- FOR FAST EFFICIENT SERVICE CALL
TERRE HILL 215-445-6736

CUSTOMER COMMENT:

We were so very pleased to have met and worked with the three men on the crew. In a day and time when young people are always being put down, its refreshing to meet young men such as these were.



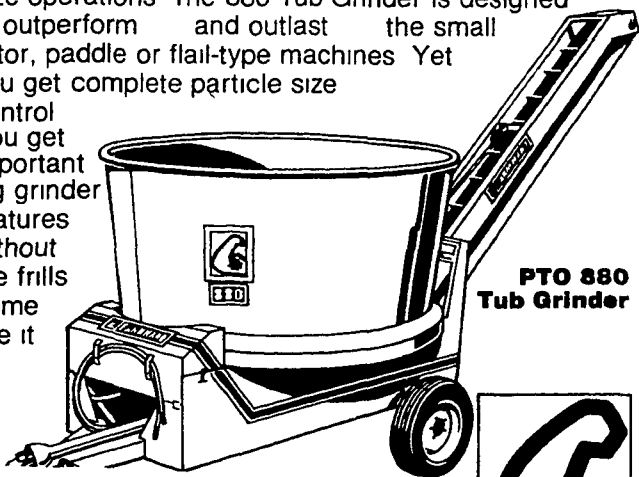
Let Us Know
Your Service Problems
HOOVER
DIESEL SERVICE
PH: 717-656-6133
2998 West Newport Rd
Ronks, PA 17572

880 ECONOMY TUB GRINDER

STRETCH & CONSERVE FEED AT AN ECONOMY PRICE.

Now tub grinding is practical for small to medium size operations. The 880 Tub Grinder is designed to outperform and outlast the small rotor, paddle or flail-type machines. Yet you get complete particle size control.

You get important big grinder features without the frills. Come see it.



PTO 880
Tub Grinder

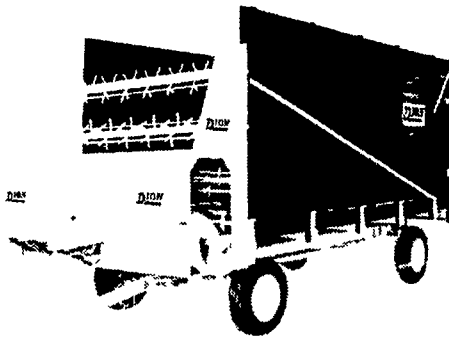
M.M. WEAVER & SONS, INC.

Leola, PA 17540
Ph: 717-656-2321



FISHER AND STOLTZFUS TRAILER SALES

Call 717-768-3832 between 7 a.m. & 9 a.m.
or call 717-354-0723 after 6 p.m. East of New Holland, Pa.



Model 7'x16'x16' three beaters capacity 670 cubic feet. This illustration shows a left hand side delivery.

THESE ECONOMICAL AND EXCLUSIVE FEATURES SELL THE DION SELF-UNLOADING FORAGE BOXES

- * Standard equipment includes 6' hinged rear door, rear unloading, 18" dia cross auger and individual beater clutch
- * Long seal bearing and large shaft for long life and improved performance
- * Adjustable plates ensuring wider seat and positive locking with main axle
- * Heavier bed chains and high carbon steel shafts to handle heaviest loads
- * Steel channel and side braces to ensure permanent rigidity and hold box square
- * 12 Ton gear available with flotation tires

GREAT GRAIN HANDLING SYSTEMS BEGIN WITH GOOD PLANNING & M-C DRYERS

Now Available!

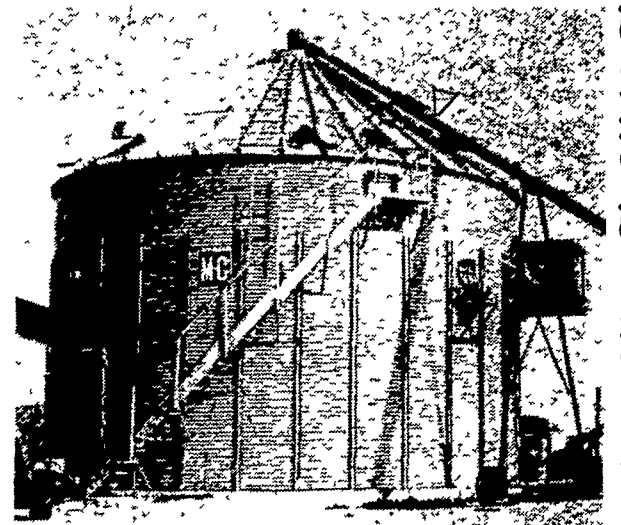


The ENERGY SAVING IN-BIN DRYING SYSTEM

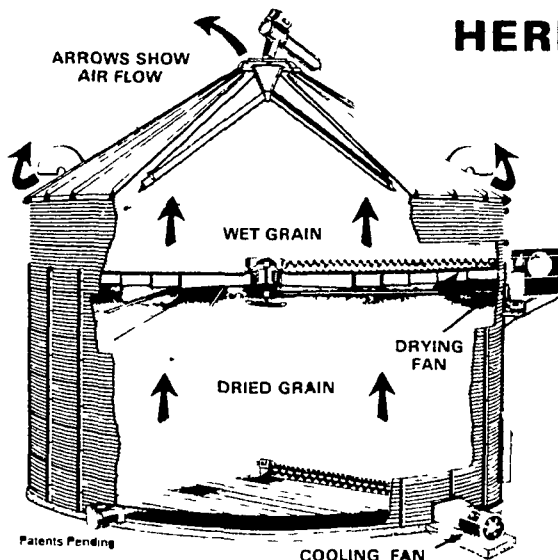
The new Mathews Continuous In-Bin Dryer is a combination storage drying and cooling bin designed to save you money. It is efficient, fast, easy to manage and costs less to operate. The drying process is fast while the cooling process is slow, eliminating stress cracks and damage caused by fast cooling. There is nothing else like it on the market. The Mathews design requires no wet holding bin or separate bin for cooling.

- Saves energy for profitable operations
- Proven high capacity results (357 bushels per hour)

- Eliminates the most common problems found in other in bin dryers
- Low per bushel costs



HERE'S HOW IT WORKS...



As wet grain enters the top of the bin, it flows into the upper drying chamber as harvested with no need for a wet holding bin. This upper chamber holds up to 4 feet of wet grain (2250 bushels).

Every seven minutes a continuous flow auger makes a complete revolution around the upper drying floor drawing the dried grain into the lower cooling area.

Hot air is introduced under the upper floor to dry the wet grain and to heat the surface of the grain that is distributed into the lower cooling chamber. The air that is used for cooling the grain picks up heat during the cooling process. This heated air is then used again in the drying process, saving on fuel costs.

When not being used for drying, the bin will store 8500 bushels of grain.

BIN DRYER TEST

Ambient Temperature	43°	Moisture (Average Incoming)	28.3
Plenum Temperature	190°	Moisture of Dry Corn	13.1
Static Pressure	1.5	Points Removed	15.3
Average Fuel Costs	51.9¢/gallon	Bushels/hour	356.8
Gallons LP Gas ('79)	1,420	Total Drying Time ...	40 Hours 57 Minutes
Bushels/gallon	10.3	Unload (Tapered)	
Cost/bushel05	Auger Time On ..	23 Hours 35 Minutes
Bushels Dried ('79)	14,629		

THIS SYSTEM WILL FIT ANY 30 FT. x 7 RING BIN

DISTRIBUTORS FOR: M-C DRYERS, BROCK BINS, BAZOOKA AUGERS and BUCKET ELEVATORS



SYCAMORE IND. PARK
255 PLANE TREE DRIVE,
LANCASTER, PA. 17603
(717) 393-5807
Route 30 West at The Centerville Exit

Designers of Quality Systems for Poultry, Swine and Grain Handling.