

Dog training season reopens

HARRISBURG — Pennsylvania's sportsmen are reminded by the Game Commission dog training season reopened in the state on August 1. The season has been closed since March 31.

Dogs may be trained at any time, day or night, from August 1 through March 31.

To train dogs legally on Sunday, the consent of the owner of the property where such training is planned must first be obtained, except in the case of state-owned and national forest lands.

Handlers are reminded that the carrying of a rifle or shotgun while training dogs is prohibited.

The Game Commission urges dog owners to show the same courtesies that apply during hunting seasons, such as asking permission from landowners to train dogs on

their properties.

In fact, dog handlers who demonstrate their competence and act in a responsible manner are often welcomed back by private landowners during the regular hunting seasons.

Dog trainers are urged by the Game Commission not to overextend themselves or their animals during the early part of the training season.

Both canines and hunters are generally out of shape at this time of year. Few have spent much time in the field during recent months, and muscle tone is lost and extra pounds are often added during extended loafing periods.

Heat, soft muscles and excess weight usually take their toll on both sportsmen and dogs over-exerting themselves at the outset of a training season.

The Game Com-

mission recommends especially during hot weather, for both hunters and dogs.

Small game hunters with dogs have a decided edge over those

who depend strictly on their own ability to flush wildlife during the fall hunting seasons. A well-trained dog with a sharp nose will locate much more game than a person tramping and

kicking through good cover.

And if the hunter knows in advance the location of game before it moves, he or she has a much better chance of scoring.

GARRETT CO. PRODUCTION SALE

45 REGISTERED HOLSTEINS

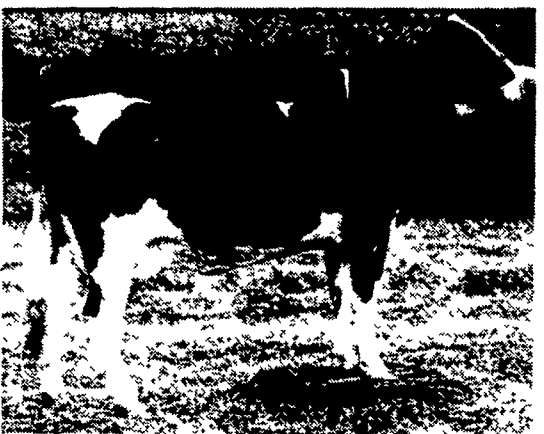
THURSDAY, AUGUST 20, 1981 at 7:00 P.M.

GARRETT COUNTY FAIRGROUNDS

At McHenry, Md., 14 miles north of Oakland on Rt. 219



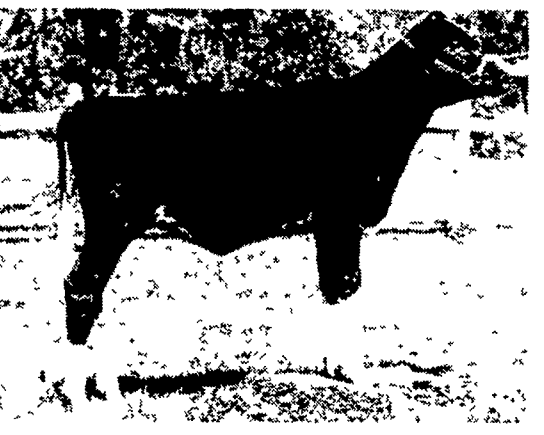
OREN C. BENDER FAMILY is sending a VG-85 quality ultimate dau. 2-03-313-15040 M 3.9% 580 F. Dam Ex. 93-2 E. 22,180 M. 3.6% 803 F. Dams full sister Ex. 94-2 E. with 28,510 M. 1,066 F.



WAYNE E. SCHROCK is sending this VG Astronaut at 1-10-248 d. 13,070 M. 4.1% 534 F. Est. 305 - 15,160M. 625 F. Dam GP 82-285 days - 18,510M 4.5% 836 F. Due of Oct. to Straight Pine - Elevation Pete.



FREDERICK W. TEETER is sending this Astronaut dau. from an Elevation dam with 23,240 M. 823 F. Milked 103.5. 4.4% first test this lactation. Due after sale to Mark A.



HANDMADE HOLSTEIN QUILT
To be auctioned at sale. Benefits will go to Jesse Swartzentruber to help pay for medical expenses as he is a free bleeder.

PHILIP BEACHY is sending a Marquis King GP 82 at 2 yrs. Ex. Mam. 2-0-311 d. 17,890 M. - 566 F. Dam VG 86 Ex Mam. with 22,140 M. 713 F. 2nd Dam VG 87 - 28,200 M. 1,077 F. - 3.8% - 3rd Dam VG 87 - 22,390 M. 659 F. Due to Persuader.

NORTH VIEW FARMS is sending a GP-81 Proud Performer at 2-0-262d. 13,710M - 3.8% - 517 F. Est. 305 - 15,393 M. - 583 F. Dam a GP 83 Elevation dau. with 24,020 M. 4.2% 1,009 F. 2nd Dam VG 88-305 d. 23,150 M. 4.2% 970 F. 3rd Dam VG 88. Ivanhoe Star Dau. 20,880 - 3.6% - 751 F. Lifetime over 191,000 - 3.8% - 7,190 Fat.

LEON J. KNEPPER is sending a Kitbuilder from a GP Monitor dam with 305 d. 22,138 M. - 4.1% - 898 F. Due close sale time.

DONALD BROOKE is sending Job dau. Dam VG with 20,670 M. - 4.3% 900 F. Due after sale.

CHARLES MASON, Jr. is sending a Jet Stream dau. Dam. VG - 23,930 M. 805 F. 3rd Dam 23,820 M. - 695 F. Due to close sale time.

J. WILLIAM & VERA SHULTZ are sending a Marxvex dau. Dam GP 81 Bootmaker 365 days - 21,190 M. - 4.5% - 948 F. Next Dam VG 20,470 M. 4.1% - 841 F. 3rd Dam, VG 87, 21,649 M. 3.9% - 883 F. will be fresh.

PAUL & ROSE BURD are sending an Astronaut dau. from a VG 88, Arlinda Chief 17,627 M. - 4.1% - 767 F. Next Dam VG 85 - 16,160 M. - 4.0% 640 F. 3rd Dam GP - 19,190 M. - 3.7% 705 F. Due before sale.

SEC-WIN FARM is sending a Betty Chief dau. Dam VG 86, Astronaut dau. with Est. 20,514 M. - 3.9% - 790 F. 2nd Dam GP 83 - 23,245 M. 849 F. 3rd Dam VG 85 - Due Oct. to Milestone.

ALLEN HILL DAIRY is sending a Molly Chief dau. from a VG 86. Dam with 20,886 M. 690 F. 2nd Dam GP 20,101 M. - 3.7% - 753 F. 3rd Dam VG 87 - 20,451 M. - 3.8% over 750 F. 2nd, 3rd and 4th Dam all over 100,000 lifetime. Due close sale time.

JOSEPH KAVANAUGH is sending a Glen Valley Star dau. from a GP 84 Elevation Dam 19,978 M. 4.6% - 915 F.

CLARK YODER is sending a GP 82 - Elevation dau. at 3-08 - 22,955 M. 4.3% - 995 F. Next Dam GP 83 - 17,390 M. - 4.2% - 728 F. 2nd Dam VG 86 21,170 M. - 717 F. 3rd Dam 21,356 M. - 3.6% - 778 F. Due Aug. 28th.

(9) GOOD PEDIGREED CALVES SELLING -

PAUL & DAVID COUNTRYMAN are sending a Penmar Apollo Topper dau. Dam VG 86 - Astronaut at 2-6 273 d. 17,111 M. - 3.8% - 642 F. Bred 18,773 M. - 706 F. 2nd Dam VG 87 Elevation 21,063M. - 3.9% - 823 F. 3rd Dam VG 88 - 17,447 M. 4.2% - 740 F. over 100,000 lifetime. 4th Dam VG lifetime over 118,000 M. 5th Dam VG over 179,000 M.

CALVIN SCHROCK is sending an Arlinda Dau. calf born 7-12-80, Dam GP 81 - 14,760 M. 4.9% - 731 F. 2nd Dam GP 84 - 14,950 M. - 4.5% 670 F. 3rd Dam VG - 305 d. 11,670 M. - 4.5% - 523 F. at 2 yr., 1 mo.

REMAINDALE FARM is sending a Creek Calf born 2-8-18. Dam VP Bootmaker dau. 24,194 M. 748 F. over 153,000 lifetime. 2nd Dam VG over 114,000 lifetime. 3rd Dam VG.

GERALD CARR is sending a Cittamat Calf born 7-13-80, GP 83 Elevation dau. 17,326 M. - 4.4% - 768 F. Next Dam over 19,000, 3rd Dam over 17,000 M. 4.3% - 750F.

DONALD GLESSNER is sending a Wayne Spring Fond Apollo dau. calf born 12-14-80. Dam VG 85. Est. 305 days - 20,863 M. - 3.9% - 833 F. Next Dam GP 82 - 17,444 M. - 3.7% - 652 Fat.

-CHICKEN BARBECUE AT 5:00 P.M.-

PEDIGREE: Oren C. Bender (301) 826-8340
SALE CHAIRMAN: Robert Miller (301) 895-5650
AUCTIONEER: Clark A. Yoder (814) 662-2901

Sponsored by:

The Garrett County Holstein Club

PAUL YODER is sending this Triple Threat Born 10-22-80. Dam Ex-91 Ivanhoe Star, 4-10-29, 520 M. 953 F. 239 days - 22,120 3.6% 797 F. Inc. Next Dam VG 87 - 315 d. 23,590M. 3.5% 816 F. Over 110,000 lifetime.

PUBLIC SALE

OF REAL ESTATE & FARM EQUIPT.

Public Sale of tracts of the Shirley-Ayr Farm situate along Route 522, approximately one mile south of Mount Union, Pennsylvania, at Stockman's Restaurant, on

SATURDAY, SEPTEMBER 12

Sale at 12:30 P.M.

TRACT NO. 1: 97 acres of prime, almost level farm land presently under cultivation, predominately in corn. Ideal crop land.

TRACT NO. 2: 65 acres, 16.5 acres tillable, balance timber. Access by an excellent private Road from U.S. Highway Rte. 522. The road is tiled and shaled.

TRACT NO. 3: 10 acres filed adjacent to approved subdivision in Shirley Township.

TRACT NO. 4: 9 single family home lots averaging 2 acres. Private road is completed for part of the development. Lots average 2 acres. These lots will be sold separately and as a whole.

TRACT NO. 5: Dairy farm situate in Germany Valley, 5 miles southeast of Mount Union, Huntingdon Co., Pa., 3 miles northeast of Shirlensburg and Route 522 along the Germany Valley Road. Dairy farm consisting of approximately 155 acres, known as the Brant Farm, approx. 60 acres tillable, balance pasture. Separate tract of 50 acres of woodland is also available and will be sold separately and as part of the whole. Buildings consist of a large dairy barn with stanchions for 20 cows and 50 free stalls, plus cement holding area, 50x90 feet, 12 times 45 tile silo, 10 room house with 2 fireplaces. School bus and mail stops at door. Handy for milk pick-ups.

Terms: 10% down, balance on possession which can be given within 45 days. The owner reserves the right to reject any and all bids. Some financing can be arranged with the owners. Contact owner or auctioneer for map of property selling.

FARM EQUIPMENT

Following the Sale of Real Estate will offer following equipment- Deutz 106 Diesel tractor, excellent cond.; John Deere 5-16 in. 3 pt. semi-mount plow; Int. 12 ft. transport disc; Brillion fold-up harrow; N.H. 36 flail chopper; M.F. 3 pt. mower; Hesston stack mover; Int. 46 baler with thrower; H S R 240 rake; Farmrite field sprayer; J.D. 15x7 drill; Oliver loader with hyd. bucket and fork; misc. items.

Terms Cash on Equipt.

Owners,
ROBERT M. & MINERVA ARMOUR
Mount Union, Pa.

Phone: 814-542-8913
or 542-8215

Ralph W. Horst, Auctioneer
Marion, Pa. 17235

Phone 717-375-2824

John Gates, Attorney
Huntingdon, Pa. 16652