

## Dauphin Co. DHIA

(Continued from Page D22)

Lauden Farms				
Berth94	6-6	16,903	3 1	517
Vera	5-4	17,992	4 0	711
Trudy 8	4-4	18,724	3 5	652
109	3-9	14,666	3 7	540
115	3-8	20,594	3 2	651
105	2-0	16,410	3 3	539
Frank Wagner, Jr				
21	6-9	14,786	4 8	714
7	5-6	22,455	4 0	909
Gary E Miller				
45	5-9	14,410	3 9	565
70	6-8	13,921	4 2	586
12	4-3	18,388	3 5	640
16	3 3	13,363	4 3	569
Great View Farms				
Frosty	6 5	15,251	3 8	584
Miracle	3 6	14,320	4 9	700
Hilda	3-4	16,233	3 5	587
Earl Campbell				
101	6-11	13,498	4 1	559
104	3-3	15,521	4 2	651
114H	1-11	12,709	4 1	524
Henry Keiter				
Peg	6-10	16,141	4 8	773
Tracy	3-11	12,457	5 0	624
Pamela	2-0	11,951	4 2	504
Donald Miller Deemar				
28	8 8	15,091	3 7	562
Roy M Brubaker				
Lilly	4 9	15,356	3 9	593
Racheal	4-3	19,851	3 5	687
Twinkle	2 9	14,924	3 8	571
Isaac K Newswanger				
12	5-9	16,789	3 6	602
1077	4-3	13,987	3 9	541
Sher Mar Acres				
292	6-9	15,881	3 6	570
15	2 10	13,578	3 7	507

12	3 9	13,466	3 7	500
James Leshar				
Cindy	6 8	13,507	4 5	611
Sugrbab	4-9	16,905	3 9	665
Lesa	2-10	13,907	3 6	502
Raymond Belack				
Calico	4 2	14,312	4 0	573
Wil lene Farms				
5	11-1	16,314	3 8	612
6	5-9	19,187	3 6	691
10	5-0	22,275	3 5	786
38	4-9	16,349	3 8	627
40	5-7	24,345	3 0	723
41	5-10	19,705	3 4	666
60	4-0	14,169	3 8	536
62	2-4	16,008	3 9	621
68	2-10	15,130	4 1	623
37	5-9	22,950	3 2	738
Arthur Brandt				
Eagle	9-0	15,515	3 3	512
Befuna	5-6	15,237	3 6	547
Kelly	3-6	15,742	3 5	553
Tender	3 2	13,095	3 9	505
6	2 4	12,916	4 1	530
Elwillo Farms				
74 R	5-11	16,291	4 7	759
36 R	5-5	14,373	4 1	583
129	4-2	16,076	4 5	731
10	9-9	19,126	3 7	710
13	3 1	15,967	4 3	686
199	2 6	18,620	3 0	552
Larry L Boyer				
Betty	5-0	19,631	3 2	625
Dale F Faust				
Rose	10-8	14,267	3 8	540
4	8-10	14,170	4 2	601
3	3-6	12,625	4 3	543

**SADDLE UP!**  
To Better Equipment... Find It in Lancaster Farming's CLASSIFIEDS!

# patz

★ Barn Cleaners, Manure Pumps, Manure Stackers, Silo Unloaders, Bunk Feeders, Feed Conveyors

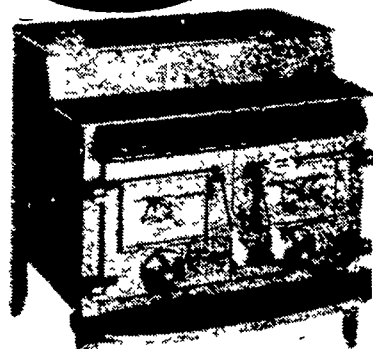
**MARVIN J. HORST**

DAIRY EQUIPMENT

1950 S. 5th Avenue, Lebanon, Pa. 17042  
Phone: 717-272-0871



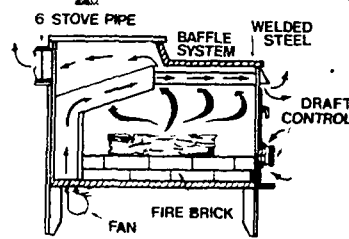
**PLAN AHEAD...**  
Buy In Stock Models and Beat the Price Increase



FUEL BILL BURNING A HOLE IN YOUR BUDGET?

SAVE With A BAKER!

- 5 Different Models To Choose From
- 2 Baker Fireplace Models
- Corning Vycor® Glass Window Available
- Coal grates available
- Engineered to burn less wood with peak efficiency
- Circulating & radiant heat - the patented system for warmer living



## J & A STOVES

3752 East Newport Rd., Gordonville, PA 17529  
Along 772, 1/2 Mile East of Intercourse  
PH: 717-768-8913



**PRICES CHOPPED ON JOHN DEERE HARVESTER PARTS**  
Offer Good August 8 - August 31  
**2% to 10% OFF CASH DISCOUNT**



Before it's time to fill your silo, be sure your forage harvester is working right. We have the repair parts you need for a smooth harvest.

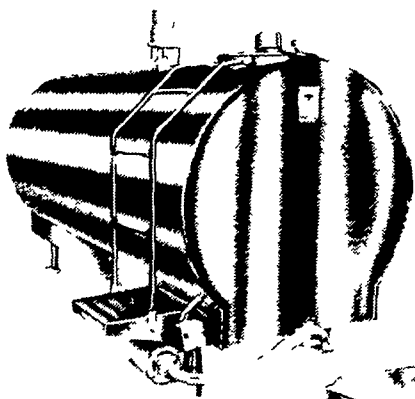
Whether you own a self-propelled or pull-type John Deere forage harvester, we have the replacement parts to restore full performance. Check your machine today. Then see us for knives, gathering belts, pickup reel fingers, recutter screen or whatever parts you may need. Don't take chances on unnecessary downtime.



## WENGER IMPLEMENT, INC.

R.D. #2, (At the Buck)  
Quarryville, Pa. 17566  
717-284-4141

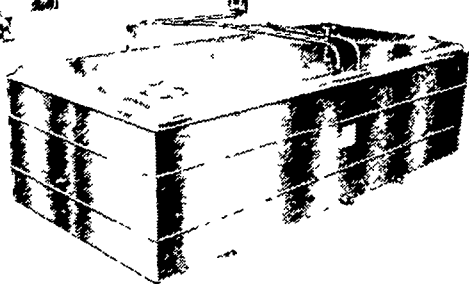
Bulk Tanks, with something in common . . .  
**PERFORMANCE!**



D 5 AMBASSADOR  
500 To 6000 Gal Sizes



D-4 DIPLOMAT  
200 To 1000 Gal Sizes



If you're after the best value in a farm milk cooler, then you're looking in the right place. Girton Farm Tanks have always been known as the quality line - the "Cadillacs" of the industry. Over the past ten years, thousands of installations have been made - each one adding to this quality reputation.

- FULLY-FLOODED GIRTON COLD PLATE
- STAINLESS STEEL CONSTRUCTION
- CAN USE R-12 OR R-22 REFRIGERANT
- URETHANE (FOAMED IN PLACE) INSULATION

GIRTON MANUFACTURING COMPANY  
**SMUCKER'S SALES & SERVICE, INC.**

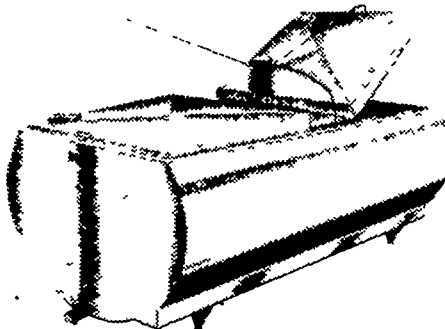
RD 2, Box 21, New Holland, PA 17557  
717-354-4158, If no answer 717-354-4374  
We will do your refrigeration installments and service  
Sub contract with Titus H. Horning

## MUELLER Bulk Milk Coolers



The Mueller Model "OH" with HiPerForm cooling, Mueller-Matic Automatic Washing System, and built-in freezer protection control is the most advanced bulk milk cooler in the world. The nation's most progressive dairymen are using it. Shouldn't you be?

**ASK US ABOUT LEASE or LEASE PURCHASE ON MILK TANKS**



**THE MUELLER MODELS OH, MHL, AND MW WITH HIPERFORM MAKE ALL OTHER BULK MILK COOLERS OBSOLETE**  
**SEE THE MUELLER NEW MODELS**

★ 500 MW ★ 600 MW

The "MW" is one of the Lowest pouring Height Bulk tanks. Check with us all the new features on the "MW" bulk tank. If you are in the market for a bulk milk cooler and you don't check all the advantages of the Mueller "OH", "MHL", and "MW" you may be buying an obsolete cooler.

## QUEEN ROAD REFRIGERATION

Box 67, Intercourse, PA 17543  
Phone 717-768-9006 or 768-7111  
or Answering Service - 717-354-4374

★ WE ARE ONE OF THE ORIGINAL MUELLER DEALERS  
★ 24 HOUR SERVICE

### USED TANKS

400 Gal D-4 Girton, like new	425 Gal Esco
500 Gal D 2 Girton	500 Gal Esco
500 Gal Milkkeeper	600 Gal Esco
1000 Gal Girton	800 Gal Esco
400 Gal Esco	400 Gal Darr-Kool
	400 Gal "MHL" Mueller