

Fulmer, Palmer win at Plainfield

PLAINFIELD — Michele Fulmer and Danielle Palmer both won grand champion awards at the Plainfield Farmer's Fair Youth Dairy Show.

Judge James Shaw, of Berks County, named Danielle Palmer's aged Brown Swiss cow as the Grand Champion of the colored breeds show. Reserve Grand Champion honors went to Jeffrey Horn's four-year-old Jersey.

Junior Champion honors went to Richard Welsh's Jersey Junior Calf and Reserve Junior Champion went to Michael Pysher's Junior Yearling Ayrshire.

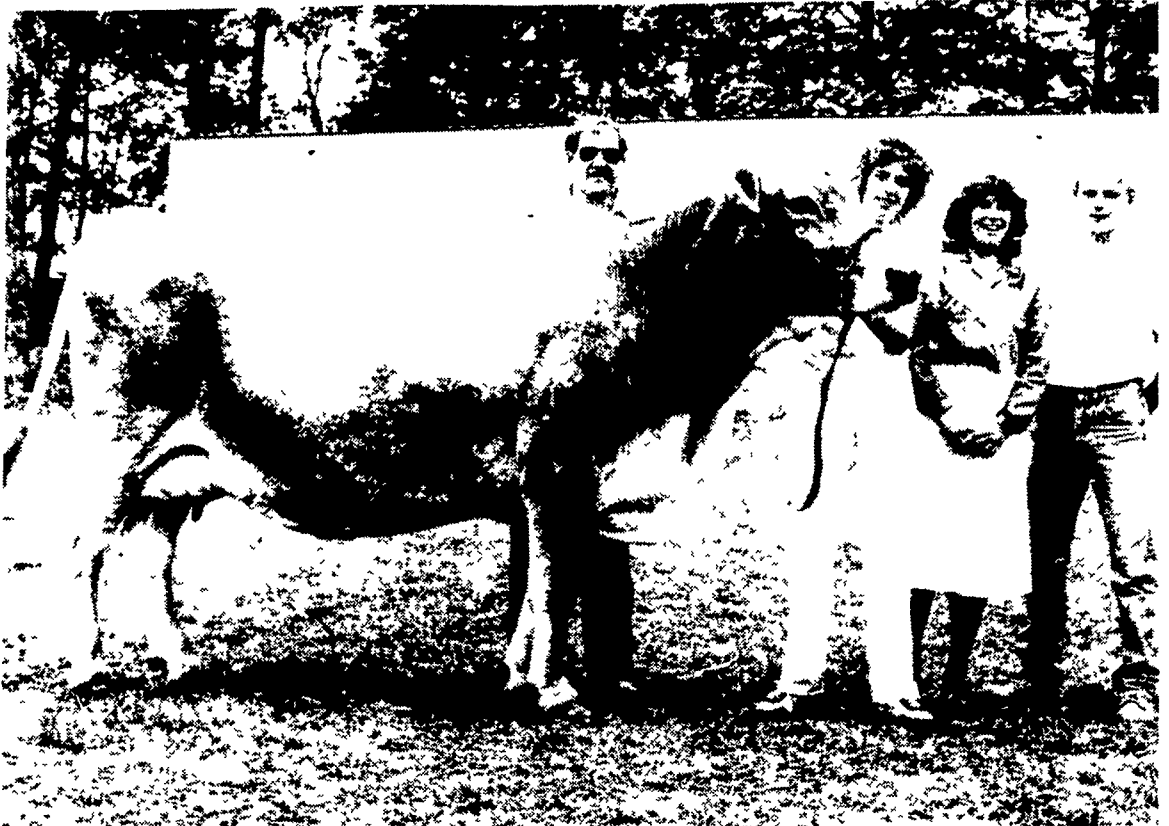
In the Holstein show, Judge Shaw awarded the grand championship to Michele Fulmer's aged cow. Thomas Weber's aged cow took Reserve Grand Champion Honors.

Suzanne Weber's fancy intermediate calf took the Junior Champion award and Jennifer Bush's Senior Calf was awarded Reserve Junior Champion.

Placings were as follows.

- COLORED SHOW**
JUNIOR CALF-BROWN SWISS
 1 Danielle Palmer Bangor
- JUNIOR CALF-JERSEY**
 1 Richard Welsh Mt Bethel 2 Christine Horn Bangor
- INTERMEDIATE CALF AYRSHIRE**
 1 William Mack Pen Argyl
- INTERMEDIATE CALF JERSEY**
 1 Christine Horn Bangor
- SENIOR CALF JERSEY**
 1 Jeffrey Horn Bangor
- JUNIOR YEARLING-AYRSHIRE**
 1 Michael Pysher Easton
- JUNIOR YEARLING-BROWN SWISS**
 1 Marie Palmer Bangor
- SENIOR YEARLING-AYRSHIRE**
 1 Christine Mack Pen Argyl 2 Lisa Mack Pen Argyl
- SENIOR YEARLING-JERSEY**
 1 Jeffrey Horn Bangor
- JUNIOR CHAMPION**
 Richard Welsh Mt Bethel
- RESERVE JUNIOR CHAMPION**
 Michael Pysher Easton
- JUNIOR TWO YEAR OLD-AYRSHIRE**
 1 William Mack Pen Argyl 2 Steven Mack Pen Argyl
- JUNIOR TWO-YEAR OLD BROWN SWISS**
 1 Danielle Fulmer Bangor 2 Phillip Palmer Bangor
- SENIOR TWO YEAR OLD-AYRSHIRE**
 1 Christine Mack Pen Argyl 2 Darlene Mack Pen Argyl
- SENIOR TWO YEAR OLD-BROWN SWISS**
 1 Danielle Palmer Bangor
- THREE AND FOUR YEAR OLD-AYRSHIRE**
 1 Steven Mack Pen Argyl 2 William Mack Pen Argyl
- THREE AND FOUR YEAR OLD-BROWN SWISS**
 1 Danielle Palmer Bangor 2 Marie Palmer Bangor
- THREE AND FOUR YEAR OLD-JERSEY**
 1 Jeffrey Horn Bangor

- FIVE YEARS AND OLDER AYRSHIRE**
 1 Steven Mack Pen Argyl 2 Christine Mack Pen Argyl
- FIVE YEARS AND OLDER BROWN SWISS**
 1 Danielle Palmer Bangor 2 Phillip Palmer Bangor 3 Marie Palmer Bangor 4 Marie Palmer Bangor
- SENIOR CHAMPION**
 Danielle Palmer Bangor
- RESERVE SENIOR CHAMPION**
 Jeffrey Horn Bangor
- GRAND CHAMPION**
 Danielle Palmer Bangor
- RESERVE GRAND CHAMPION**
 Jeffrey Horn Bangor
- HOLSTEIN SHOW**
JUNIOR CALF
 1 Wendy Pysher Bangor 2 Randy Ott Bangor 3 Robert Miller Bangor 4 Lori Brodt Acker manville 5 Robert Miller Bangor
- INTERMEDIATE CALF**
 1 Suzanne Weber Bethlehem 2 Robert Miller Bangor 3 Michele Fulmer Nazareth 4 Susan Fulmer Pen Argyl 5 Dawn Hower Nazareth
- SENIOR CALF**
 1 Jennifer Bush Bangor 2 Allen Minnich III Northampton 3 Michael Weber Bethlehem 4 Brian Ott Bangor 5 Jeff Brewer Bangor
- JUNIOR YEARLING**
 1 Diane Luro Easton 2 Scott Caka Easton 3 Steve Mack Pen Argyl 4 Shelly Minnich Northampton 5 Scott Miller Bangor
- SENIOR YEARLING**
 1 Susan Fulmer Pen Argyl 2 Scott Pysher Bangor 3 Cara Strohmeier Easton 4 Susan Fulmer Pen Argyl 5 Robert Miller Bangor
- JUNIOR CHAMPION**
 Suzanne Weber Bethlehem
- RESERVE JUNIOR CHAMPION**
 Jennifer Bush Bangor
- JUNIOR TWO YEAR OLD**
 1 Brian Ott Bangor 2 Elizabeth Strohmeier Easton 3 Steven Mack Pen Argyl 4 Randy Ott Bangor 5 Michael Pysher Easton
- SENIOR TWO YEAR OLD**
 1 Michele Fulmer Nazareth 2 Tonya Starke Easton 3 Julianne Starke Easton
- THREE AND FOUR YEAR OLD**
 1 Michele Fulmer Nazareth 2 Elizabeth Strohmeier Easton 3 Kevin Brewer Bangor
- FIVE YEARS AND OLDER**
 1 Michele Fulmer Nazareth 2 Thomas Weber Bethlehem
- SENIOR CHAMPION**
 Michele Fulmer Nazareth
- RESERVE SENIOR CHAMPION**
 Thomas Weber Bethlehem
- GRAND CHAMPION**
 Michele Fulmer Bethlehem
- RESERVE GRAND CHAMPION**
 Thomas Weber Bethlehem
- BEST UDDER**
 Michele Fulmer Nazareth
- DAM AND DAUGHTER**
 1 Danielle Palmer Bangor 2 Julianne Starke Easton 3 Steven Mack Pen Argyl 4 Christine Mack Pen Argyl 5 William Mack Pen Argyl
- JUNIOR FITTING (13 & under)**
 1 Robert Miller Bangor 2 Richard Welsh Mt Bethel 3 JulieAnn Longenbach Northampton 4 Suzanne Weber Bethlehem 5 Kim Minnich Northampton
- JUNIOR SHOWMANSHIP (13 & under)**
 1 Tonya Starke Easton 2 Brian Ott Bangor 3 Elizabeth Strohmeier Easton 4 Kevin McEwen Bangor 5 Wendy Pysher Easton
- SENIOR FITTING (14 & up)**
 1 Jennifer Bush Bangor 2 Susan Fulmer Pen Argyl 3 Jeffrey Horn Bangor 4 Julianne Starke Easton 5 Michele Fulmer Nazareth
- SENIOR SHOWMANSHIP (14 & up)**
 1 Michele Fulmer Nazareth 2 Susan Fulmer Pen Argyl 3 Julianne Starke Easton 4 Jeffrey Horn Bangor 5 Randy Ott Bangor



With the grand champion of the colored show at the Plainfield Farmer's Fair are, from the left, Judge James Shaw; Danielle Palmer, Bangor, owner; Karen Shoemaker, Northampton-Lehigh Dairy Princess; and Jeffrey Horn, Bangor. Grand champ is Marty L. Sno-White, sired by Maple Grove Performer.



Reserve grand champion at Plainfield Fair, Bethlehem, owner; Judge James Shaw and Juniperdale Prilly Louie, sired by Juniperdale Louie Chief, is shown with Thomas Weber, Northampton-Lehigh Dairy Princess.



Among winners at Plainfield Farmer's Fair are, from the left, Christine Malk, PenArgyl, alternate dairy princess; Jennifer Bush, Bangor, senior fitter; Tonya Starke, Easton, junior showman; Robert Miller, Bangor, junior fitter; Michele Fulmer, Nazareth, senior showman; Judge James Shaw and Donald Malk, show chairman.

Wanted: Century Farms

LANCASTER — The Century Farms Program, administered by the Pennsylvania Department of Agriculture, will continue through this year.

The Century Farms Program is aimed at recognizing the efforts of Pennsylvania's farm families which have preserved the traditions and the rural heritage of the pioneer farm.

Pennsylvania's pioneer farmers persevered through all kinds of difficulties. The hardships of farming and settlement were offset somewhat by compensations of farm life. Certain virtues and ideals were developed...thrift, close family and community life, cooperation, reverence for the Creator, self-reliance and a love of liberty.

More than 700 farms from 63 counties have been certified as Century Farms in the first three years of the program, but the Agriculture Department estimates at least 2,000 more farms are

eligible for certification.

To be eligible for certification as a Pennsylvania Century Farm, a farm must have been owned by the same family for the last 100 consecutive years, and a family member must currently reside on the land. In addition, the farm must consist of ten or more acres of the original holdings or gross at least \$1,000 a year from the sale of agricultural products.

The Century Farms Program was initiated as part of the nation's bicentennial observance in 1976, but is being continued for its value in promoting the ideals of the family farm and the importance of farming to Pennsylvania's economy. Completed application forms will be held in the State Archives for use by future historians.

The application forms are available by writing Century Farms Program, Penn State Extension Service, 1383 Arcadia Road, Lancaster, PA 17601 or by calling 717-394-6851.



**READ
LANCASTER FARMING
FOR COMPLETE
AND UP-TO-DATE
MARKET REPORTS**