

PUBLIC AUCTION

VALUABLE POULTRY & SWINE FARM — EQUIPMENT
SATURDAY, SEPT. 26, 1981
 10:00 A.M.

Located 5 miles North of Manheim Borough, just off Rt. 72 1/2 mile North of the Village of Elstonville.

Farm to be offered at 10.00 A.M. Consists of 121 acres M/L. 85 acres M/L tillable. Thereon erected 44'x360' broiler house 52,000 cpy. 18 mo. in use. Confinement for 120 sows, farrow to finish. 10,000 bu. corn bin and dryer, large bank barn, double 10 room dwelling with 2 baths, electric heat system, two natural streams on the premises.

80 acres corn on the stalk. Also straw equipment as follows, 1850 Oliver tractor, 1973 Ford pickup truck. Yanman tractor and loader, Better Bilt tank spreader, John Deere 6 row 1250 cornplanter, 51' grain auger, Massey spreader, fertilizer drill, disc harrow, air compressor, grain moisture tester. Chisel plow, cultmulcher, wagon, baler, Rhyno blade 3 pt. with hydraulic, pig feeders, portal hog corral, 3 pt. hog crate, battery charger. Also various misc items not mentioned.

You will want to inspect this farm for your convenience, please dial owner for appointment 717-665-2695.

E.M. Murry Associates

287 Lime Rock Road
 Lititz, PA 17543
 Elmer Murry 626-5244 - 626 2636
 Richard Murry 626-8175 - 949-2280
 Ken Miller 665-2073
 Professional Auctioneers
 Appraisers and Advisors
 Since 1953

Sale by Owners,
CARL & SARAH JANE ZEISER

J. David Young - Atty.

PUBLIC SALE

SATURDAY, AUGUST 15
 10:00 A.M.

Route 896 South to Georgetown, right on Furnace Road, approximately 2 miles to sale.

INVENTORY CLEARANCE SALE

of
KILN DRIED LUMBER, NEW TOOLS, CLOCKS and CLOCK PARTS

All Lumber will be sold in lots of 50 board ft. and up.

LUMBER

App. 4,000-ft. Northern Cherry 4/4 or 1 in. thick.

App. 1,000-ft. Northern White Pine 4/4.

App. 5,000-ft. Walnut 4/4, 6/4, 8/4.

Also Red Oak and Poplar.

(Above all kiln dried)

Undetermined amount of Green Lumber to be sold, over 100 full sheets of Formica (Wilson Art Board), some Building Materials to be sold.

TOOLS

Spindal Shaper, Small Belt Sander, New Electric Hand Planer, Electric Mitre Saw with carbide blade, New 10" Table Saw, 2 Drill Presses (one bench and one floor model), New Horizontal Metal Band Saw, Air Line Filters and Air Hoses.

Truck Load of New Hand Tools

Shovels, Rakes, Hammers, Wheel Barrows, Socket Sets, Saws, Levels, Scrapers, and other new hand tools too numerous to mention.

Above hand tools brand names - American, Atler, Plum, Stanley, Hansen, Dissten, Duracraft, and others.

LARGE SELECTION OF CLOCKS & CLOCK PARTS

Slab Clocks, Wall Clocks and Battery Clocks. Absolutely no out of state checks will be accepted, unless prior arrangements have been made.

Order of Sale: Small Items, Clocks and Clock Parts, New Tools and Lumber.

Sale by:

ESH'S CABINET SHOP

Simeon Esh, prop.

Auctioneers:

Larry L. Lefever - 1-215-593-5296

John Stoltzfus

Lunch available by

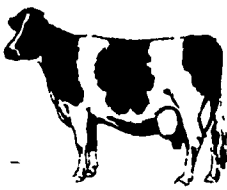
Ladies Auxiliary Bart Twp. Fire Co.

HOLSTEIN HERD DISPERSAL

SATURDAY EVENING, AUG. 15, 1981
 7:30 P.M.

Located right on Elk Lake at Agawam Farm. To arrive, turn off Rt. 29 at Dimock, Pa. Susq. Co. or 6 miles South of Montrose. Montrose is Exit 67 off I-81.

50 Holsteins
 43 Registered
 Rolling herd
 average
 16,292 lbs. M,
 560 lbs. BF



36 Mature Cows, 3 bred Heifers, 3 yearlings, 8 started Heifers.

32 Registered Cows and 11 Registered Heifers. Classified: 5 VG, 17 GP, and 6 G

April-87 pts., proj. over 30,000 lbs. M, 970 BF. Bred to Milkmaster (milk to 150 lbs. daily)

84 pt. Elevation granddaughter with excellent mammary 21,000 M, 880 BF 4.1 test as a 3 year old.

86 pts. Transmitter due August to Glen Valley Star, 18,500 lbs. M, 612 BF as a 3 year old.

A Fancy Jet Stream daughter due 11/4/81 bred to Astronaut.

BB Lad out of an Elevation dam with 3 records over 1,000 lbs. fat.

84 pt. Astronaut due Nov. to Elmer (over 19,000 lbs.)

Pencor daughter to 29,000 lbs. 1,000 BF.

3 year old Job daughter w/18,000M, 600 BF as a 2 year old.

Harmony Crest Connie due Oct. to Ace.

Stark Millie Astro due Oct. to Quality Ultimate.

2nd calf Jet Stream with plus 1200 cow index projected over 20,000 of milk as a 3 yr. year old.

A Fancy well grown yearling, sired by Tamlane out of a 83 pt. Merry King.

Service Sires Include- Milkmaster, Astronaut, Elmer, Ace, Creek, etc.

Semen: Elevation 2 ampules, Conductor 3, Canadian 10, Sexation 5, Ultimate 2, Mars 3, Elmer 6, Willow 18, etc. and much more.

Also the semen tank to be sold.

This is a Fall dairy 27 to freshen August to Jan. vary.

SIZE TYPE CONDITION

Terms: Cash or approved check with ID

Owners

MIKE AND CHRIS FULMER

Jim Adriance & Sons, Auctioneers

Montrose, Penna.

717-278-1574

50 HEAD OF GUERNSEYS AT AUCTION

322nd Special Guernsey Sale

THURSDAY, AUGUST 20

12:30 P.M.

At the Pennsylvania Guernsey Sales Pavilion, Lancaster, PA - 6 mi. E. of Lancaster on Rt. 30.

QUERIPEL AND LEEDOM, Pipersville, Pa., are sending their usual top group of Heifers - 16 head including 12 head purchased at the Croasdale Dispersal. Their dams highest records averaged 12744M and 593F. Service sires include JUPITER (4), CHOICE (6), DARI FAYVOR (4).

LUTHER HUSTON, Hebron, Md., consigns 10 head due from July 15 to August 30. Sires include Eber Lea Farms WINSTON, Yellow Creek DORAMOST (3), Willows Hornets RULER (5), a TOP HORNET son, his dam with several good records. Also a show heifer Honeycrest Fayvor Tatty. All heifers vaccinated.

DOUGLAS McWHIRT, Fredericksburg, Va., send 3 toppers including Deerpath Emorys Que projected at 16493M and Dardenellas Distinct Jemma with 1-09, 16220M 678F 305-2x DHR.

GREEN MANOR GUERNSEYS, Littlestown, Pa. - A Deacon bred heifer due in early Oct. to Piney Lane Top Lancer. Granddam with record to 14070-647-6-2 DHR 305-2x.

ANCHOR & HOPE FARM, Port Deposit, MD. - Two fresh cows, fresh and ready to make base milk. One sired by Hollirex.

J.O. EBERSOLE, Duncannon, Pa. - A fresh daughter of Welcome Flash's Hollirex.

DANIEL FURLOW, Lititz, PA - 4 cows, 3 fresh, 1 by Doramost, 1 by Aladdin, 1 by Dolphun. 1 granddaughter of Double Emory due later to Premier, milking with a 5.2 test.

Sale Managed By

Pa. Guernsey Breeders Association

Lee Yost, Manager,
 Auctioneer Ph. 717-299-8955
 2497 Lincoln Hwy. East
 Lancaster, Pa. 17602

The Merryman Co.

John B. Merryman,
 Sparks, MD 21152
 Phone 301-771-4624

Sale Barn Phones: 717-394-2721 & 392-9560

Sale Headquarters: Millstream Motor Lodge,

Phone 717-299-0931

Tax Act profits farmers

(Continued from Page A1)

covers large trucks, machinery including farm tractors, and one-purpose agricultural buildings.

Under the three-year category will fall highway tractors, light-duty trucks, breeding animals and machinery and equipment used for development.

For individuals, Peat, Marwick, Mitchell and Co., points out that, "The primary immediate benefits will have an across the board tax rate reduction phased in over a four-year period and a one-step reduction in the maximum individual tax rate from 70 to 50 percent."

The firm goes on to say that the reduction of the maximum tax bracket from 70 percent to 50 percent as of January 1, 1982 will be of primary benefit to individuals with significant amounts of interest and dividend income.

"What this does," explains

Hoffman, "is to eliminate the distinction between personal service income (wages, salaries, professional fees) and passive or investment income. Since there was a 50 percent tax lid on personal service income, tax payers whose income consists mainly of salary or professional fees benefit the least from this change. By contrast, however, the top bracket reduction is bound to make a lot of pure investment situations more attractive and to take the steam out of a good many tax shelter deals."

A booklet released by Peat Marwick points out that the maximum long term capital gains rate for individuals is reduced from 28 to 20 percent.

"This should result," Hoffman said, "in an increase in individual investment activities which of course, is one of the principle goals of the revision of the tax law."

CHEESE

MACHINERY AUCTION

Troy, Pa.
TUESDAY, AUGUST 18
 at 10:30 A.M.

Located at Troy Fairgrounds

Selling: Mr. & Mrs. John Imbt, R.D. 2, Troy, Pa. farm machinery all in good condition:

White 2-70 tr. 850 hrs.; NAA Ford w/loader; NH 277 baler w/thrower; NH 469 haybine; NH 56 rake; 2 throw boxes w/Gehl r. gr.; Badger 2300 gal. liq. spreader (like new); JD 24' elev. w/mtr.; Oliver 575 4x14 auto-reset plow; Gehl 95 mix-all; JD rake, 200 gal. sprayer; 12' Pittsburg harrow.

Also consigned equipment by Troy Equipment Co., Inc., Col. X. Roads Equipment & others:

Tractors: White 4150, Oliver 1800D; JD 3020 side console; JD 1020; JD 3010D; JD 3010; JD 2520; Melroe Bobcat skid st. loader; Ford Jubilee; IH Ms.

Harvesting Equip.: JD 341-r chopper; Kuhn 3 pt. h.; NH 770 2-r. corn w/p. sharpener; JD 38 2 r.; JD 35 1-r.; IH 16/2 hds.; JD 1 r. snapper hd.; JD pick up hds.; NH 275 baler w/thrower; NH 66 pto.; JD 14T; IH 430 w/th.; Fox blower; NH Super 23; AC blower; JD 55; NI 1-r. picker; Bush Hog 4 1/2' 3 pt.; NI 290 mower cond.; JD 11 trail mower; JD 8; NI trail; JD side mount; JD 780 windrower; JD 15A flail chopper; Grove storage box & gr.; Lamco w/10T gr.

Planting Equip.: JD aw disc; Sunflower plow disc; JD 3 pt. disc; JD 16' harrow; Kewanee 16' roller harrow; Oliver 3x14 plow; JD 4 F145 plow; Ford 3 pt. planter; AC quick hitch planter; IH 400 planter; IH 2-r. pl.; JD 246 3 pt. pl.; JD 494 pl.; JD 246 3 pt. pl.; Ont. 7x13 drill; NI spreader; JD 40 spreader; NH 362 157 bu. tank sp.; JD sp. w/pan; Best Land rockpicker.

JD 210 mounted sprayer (new); Century sprayer; JD 78 7' blade (new); JD 115 8' blade (new); Meyer snow plow complete; JD 88 7' blade; York 7' blade; 2 JD 320 snow blowers (new); JD 200 series blower; ARPS blade; JD 600 snow mobile; Moto-Ski; Ski-Doo Olympic; JD 60 mower; Back Pack blower (new); Ford LGT 120 w/blade & mower; snow blade for Sears tr.; Kensico lawn roller (new); lawn mowers; power saws; snowmobile trailers.

Many items not mentioned. Lunch.

Terms: Cash or good check day of sale. Local bank financing available subject to approval 5 days prior to sale.

For information call:

Robert Shaylor 717-297-3278
 Klas Anderson 717-297-2102
 Robert Garrison 717-297-3873

Robert M. Shaylor Sales

515 Elmira St., Troy, Pa. - 717-297-3278

Reputable Sales Service

Licensed - Bonded