

Lebanon Fair



The first annual tobacco spitting contest at the Lebanon Fair put Henry Smith into the winning 'spittoon'. This and many other special activities will be featured on dairy and farmers night, Tuesday, at the fair. Bale throwing, hand milking and calf dressing will be other featured events.



The grand champion Holstein cow at last year's Lebanon Area Fair was Valley-Pond Astrocount. The five-year-old cow owned by Hershey Bare, was also named as the cow

with the best udder. Who will be champion Holstein, Guernsey, Brown Swiss etc. at the Fair this year? Watch the LANCASTER FARMING for complete coverage of the fair.



**READ
LANCASTER FARMING
FOR COMPLETE
AND UP-TO-DATE
MARKET REPORTS**

Stop In And See Us At The
LEBANON AREA FAIR
Aug. 10-14, 1981



**INTERNATIONAL
AGRICULTURAL
EQUIPMENT**

Axial-Flow Combine

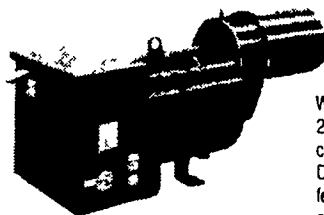
**See The New 1440 Axial-Flow
Combine...
With A New 900 Series Cornhead
It's The Ideal Corn
Combine Combination!**

YOUR COMPLETE IH FARM EQUIPMENT DEALER

SWOPE & BASHORE, INC.

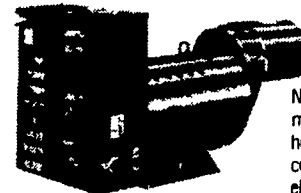
R.D. 1, MYERSTOWN, PA
Located 1 Mile S. of Int. 78 & 6 Miles N. of Myerstown
On Rt. 645 in Frystown
PHONE: 717-933-4138
Area Codes 717-215 CALL TOLL FREE
1-800-692-7467

THINKING of an ALTERNATOR? STOP IN AT THE LEBANON FAIR AUGUST 10 through 15



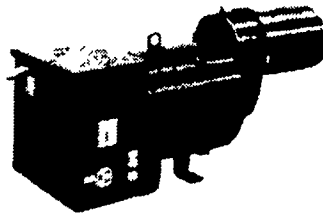
65/45/25
25,000 watts

Will start and operate 25 hp NEMA Code G combination motor load. Designed for dairies feeders and other larger operations. Ratings (watts) Surge 65 000 Intermittent 45 000 Continuous 25 000



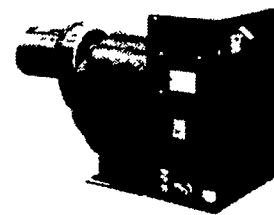
125/80/50
50,000 watts

Large heavy duty alternators can start 50 hp NEMA Code G combination motor load. Ideal for heating and ventilating confinement systems grain elevators, crop dryers feed and water systems milking operations. Ratings (watts) Surge 125 000 Intermittent 80 000 Continuous 50 000



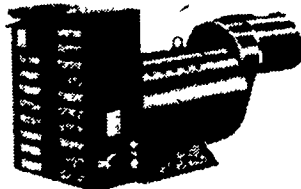
75/50/30
30,000 watts

Designed for quick starts and lasting output on larger farms and other intermediate size operations. Will start 30 hp NEMA Code G combination motor load. Ratings (watts) Surge 75 000 Intermittent 50 000 Continuous 30 000



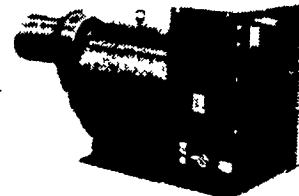
150/100/60
60,000 watts

Will start and run 60 hp NEMA Code G combination motor load. For farms with large automated operations grain dryers elevators. Six voltages available from same unit in single and three phase. Ratings (watts) Surge 150 000 Intermittent 100 000 Continuous 60 000



100/80/40
40,000 watts

Heavy duty alternator for large electrical power needs. A popular choice for dairies stock feeders and other larger electrical users. Will start and operate 40 hp NEMA Code G combination motor load. Ratings (watts) Surge 100 000 Intermittent 80 000 Continuous 40 000



250/150/100
100,000 watts

World's largest power take off alternator designed for operations requiring motor loads up to 100 hp. Brushless design for maximum reliability. Ratings (watts) Surge 250 000 Intermittent 150 000 Continuous 100 000

Some of the above models at BIG SAVINGS

25 KW AJEX made by WINCO Only **\$1595⁰⁰**
★ 2 Wheel Trailers and PTO Shafts Extra ★

MARVIN J. HORST

DAIRY EQUIPMENT

1950 S. 5th Ave., Lebanon, PA

Ph: 717-272-0871