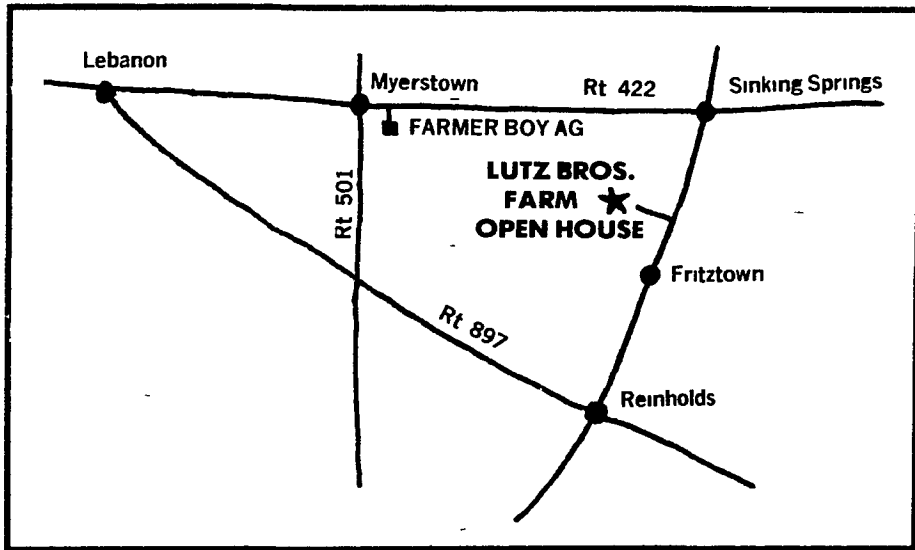
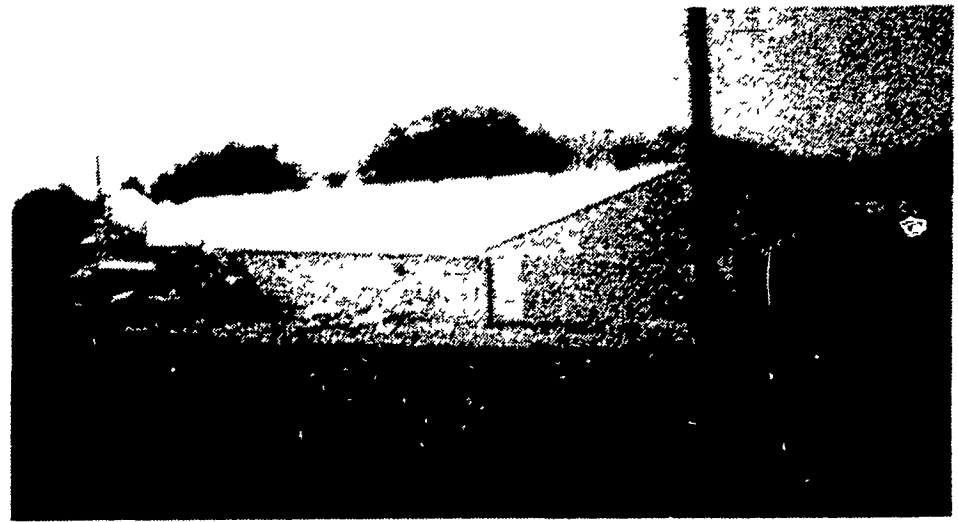


FARMER BOY AG

Congratulates The

LUTZ BROS.

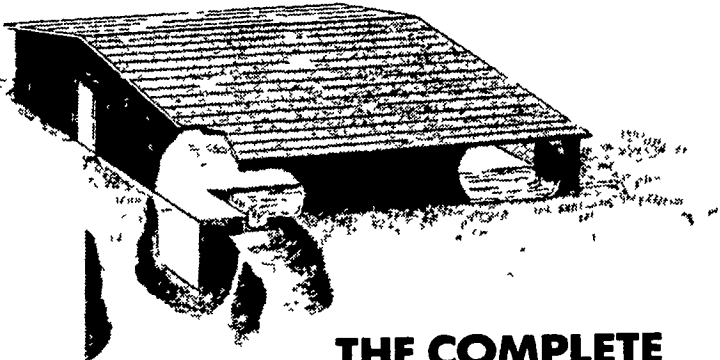
ON THEIR NEW 1600 HEAD FINISHING UNIT



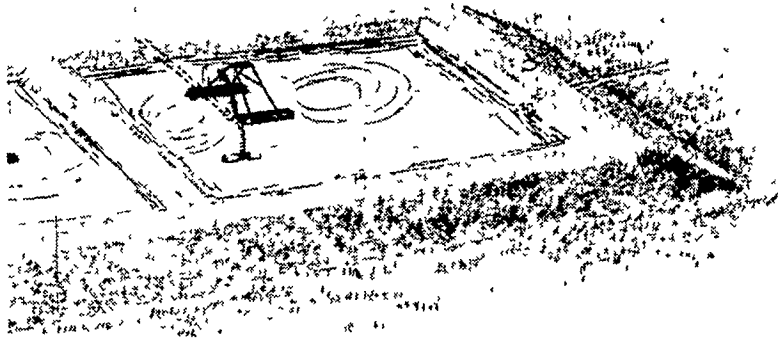
You Are Invited to See It At
 Their **OPEN HOUSE**
FRIDAY, AUGUST 7

10 A.M. to 6 P.M.

At The
JOHN A. LUTZ INC. FARM
 823 Fritztown Road, Sinking Springs, PA



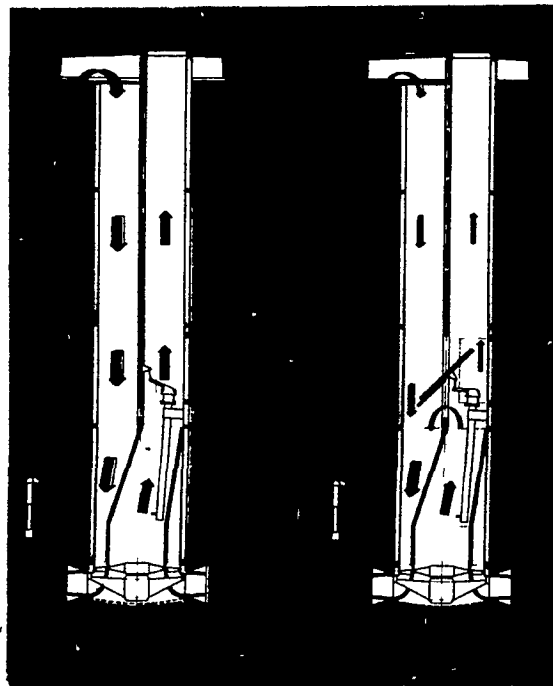
**THE COMPLETE
 LISSCO
 FLUSH SYSTEM**



The Lissco waste management system controls problems and increases your profits by flushing animal wastes from the confinement housing to a lagoon or treatment tank. The wastes are then aerobically treated by the Lissco Aqua Vac aerator. This aeration is very similar in principle to the process city waste treatment plants used to treat sewage. Instead of the waste solids decaying, they are actually broken down and digested by non dangerous aerobic bacteria. Gases, odors, and disease producing anaerobic bacteria are controlled.

This minimizes your need for expensive antibiotics to fight diseases and decreases the need for constant ventilation, since the air is cleaner and fresher. Less ventilation means lower heating costs in the winter. And the Lissco flush system automatically removes wastes so there are no solids buildup and no need for costly honeywagons and the man hours involved in manually removing waste. Your livestock have a healthier living environment, you have a cleaner working environment and your operation is more economical.

HAVING MANURE PROBLEMS? A LISSCO REPRESENTATIVE WILL BE AT THE OPEN HOUSE

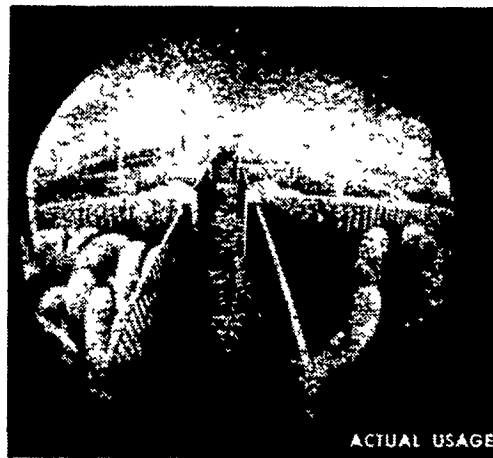


1. FRESH AIR

2. RECIRCULATION

**FRISTAMAT
 VENTILATION
 THROUGHOUT
 THE TOTAL
 COMPLEX**

**ENGINEERED FOR PERFECT
 AIR PATTERN AND
 EASY CLEANING &
 SERVICING**

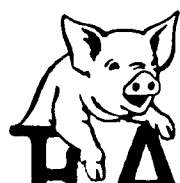


ACTUAL USAGE

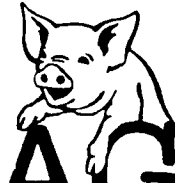
**GROWER AND
 FINISHING AREAS:**

**NEW! POURED CONCRETE
 SLOTTED
 DIVIDER
 PARTITIONS**

Complete sales, service and installation of:
 Gestation, Farrowing, Nursery Grower and Finishing Systems



Swine Confinement Systems



FARMER BOY AG. INC.

Best in Design, Price and Experience

457 E. MAIN AVE., MYERSTOWN, PA 17067
 1/2 Mile East of Myerstown

Call 717-866-7565 For An Appointment or Stop By Our Office. Our Trained Staff Will Do Their Best To Assist You With Layout And Design.