

TWO DAY SALE OF FARM EQUIPMENT

At our place of business located six miles south of Chambersburg, Pa., one mile east of Marion, along Rte. 914 just east of Rte. 81 at Marion Exit on

THURSDAY, AUG. 13 & FRIDAY, AUG. 14, 1981

Sales at 9:00 A.M.

TRACTORS - TRUCKS - IND. EQUIPT. LAWN & GARDEN TRACTORS - SELL ON THURS., AUG. 13

We expect about 100 tractors inc. John Deere, Int., Massey Ferguson, Fords, Oliver, A.C., David Brown, Case and others, some with loaders; Trucks; Crawlers and Backhoes expected; Lawn and Garden equipt; also usual run of misc. items, tools, tires, posts, etc.

FRIDAY AUG. 14 WILL SELL PICKERS - HARVESTERS - BALERS - COMBINES - HAY MACHINES, ETC.

Pickers inc. one and two row pull type and mounted; one and two row harvesters; Blowers; Flail Choppers; Cut Conditioners; Balers; Combines; Haybines; Mowers; Rakes; Conditioners; Drills; Spreaders; Grinder Mixers; Forage and Hay Wagons; 2 Tandem Axle Potato harvester, wagons, unloading unit; Troyer seed potato splitter; Plows; Packers; Disc and other harrows. Rotary Mowers; Post Diggers; Blades and usual run of equipt., small items, etc.

ATTN: FARMERS & DEALERS — Bring in your equipt. for this large two day sale. Next sale Sept. 10, "One Day Only." No equipt. with liens on accepted unless we are notified. Open daily 8 to 5, except two days before sale until 7 p.m. Closed on Sundays.

Terms: Cash or good check. Lunch at sale.

RALPH W. HORST, Manager
Marion, Pa. 17235 Phone: 717-375-2824
Renzel, Wolgemuth, Upperman, Martin, Speicher, Gossert Auctioneers
Harshman, Eberly, Rentzel, Gossert, Stull, Clerks

Public Sales Register

Closing Date - Monday, 5 00 P M of each week's publication

SAT OCT 17 2 P M Sell from Ephrata to ing a 35 Acre Farm Loca Schoeneck Road, turn left tion Take Rt 272 north to town of Schoeneck

145 Cows At AUCTION

SATURDAY, AUGUST 8

at 11 a.m. Sharp

at Ann Ayr Farm, Woodside, Delaware.

Location: 8 mi. south of Dover, turn west from U.S. Rt. 13 at sign to Woodside, go thru village to farm, 1 1/2 mi. from Rt. 13.

Registered Ayrshire herd established 1919 including 88 daughters of Oak Ridge Flashy Klondike, sire of more All-Americans than any other bull in the history of the Breed. Best of A.I. used since 1952.

45 due in August; 33 in Sept. and Oct., rest later.

Health-Tested to go anywhere—vaccinated for shipping fever.

Ann Ayr Farm Milking Herd Dispersal.

Owners, G. WALLACE & GRACE CAULK

Box 66, Woodside, Del. 19980
Phone 302-697-6711

turn left toward Mt Airy, 2 miles to Girl Scout Rd Then right to W Girl Scout Rd, turn left to 1st farm on right Owner Lydia Jane (Hurst) Martin Auctioneers John E and Paul E Martin

MON OCT 19 2 P M Danville Livestock Market, cattle and hog auction Located Old Route 11, Danville, PA Melvin M Lehman, owner

WED OCT 21 - 9 A M Consignment Sale by David H Good located 1/2 mile North of Route 23 on North Maple Ave in Leola, Lancaster Co, Pa Watch for sale signs F Snyder, R Martin, C Wolgemuth, J Fry and L Horst, Auctioneer

FRI OCT 23 - 5 30 P M Gap Auction Antiques and Household Goods sold at every auction Located off Rt 41, Lancaster Turkey Hill Minit Market, cross RR bridge, Ira Stoltzius & Son, Auctioneers

MON OCT 26 2 P M Danville Livestock Market, cattle and hog auction Located Old Route 11, Danville, PA

Melvin M Lehman, owner
WED OCT 28 - 9 00 A M Judging, 11 00 A M Sale Annual Show and Sale Held at New Holland Sales Stables, New Holland, PA

NOVEMBER

MON NOV 2 2 P M Danville Livestock Market, cattle and hog auction Located Old Route 11, Danville, PA Melvin M Lehman, owner

WED NOV 4 9 A M Consignment Sale by David H Good located 1/2 mile North of Route 23 on North Maple Ave in Leola, Lancaster Co, Pa Watch for sale signs F Snyder, R Martin, C Wolgemuth, J Fry and L Horst, Auctioneer

FRI NOV 6 - Monthly Cow Sale at the Melvin Kolb, Inc Sales Barn, 2220 Dairy Road, Lancaster, Pa 17601 Dennis Kolb, Sales Manager, Robert Mullendore, Auctioneer

FRI NOV 6 6 P M Arnold's 20th Production Sale of Bred Gilts, Open Gilts, and Boars at the Lebanon Fairgrounds,

Lebanon, PA For info contact Leon Arnold 717-273 5880

MON NOV 9 - 2 P M Danville Livestock Market, cattle and hog auction Located Old Route 11, Danville, PA Melvin M Lehman, owner

MON NOV 16 - 2 P M Danville Livestock Market, cattle and hog auction Located Old Route 11, Danville, PA Melvin M Lehman, owner

WED NOV 18 - 9 A M Consignment Sale by David H Good located 1/2 mile North of Route 23 on North Maple Ave in Leola, Lancaster Co, Pa Watch for sale signs F Snyder, R Martin, C Wolgemuth, J Fry and L Horst, Auctioneer

THURS NOV 19 - Monthly Cow Sale at the Melvin Kolb, Inc Sales Barn, 11342 Cragerstown, Rd, Woodsboro, Md 21798 Thomas Miller, Sales Manager, Robert Mullendore, Auctioneer

THURS NOV 19 - Public Auction of Full Line of Farm Equipment Take Rt 272 North from Ephrata to Schoeneck Road, take Schoeneck Road to Schoeneck, turn right at Fire Hall to first farm on right Sale by John M and Lena H Nolt, John E and Paul E. Martin, Auctioneers

SAT NOV 21 - 6 30 P M Danville Livestock Market, horse sale located Old Route 11, Danville, PA Melvin M Lehman, owner

MON NOV 23 - 2 P M Danville Livestock Market, cattle and hog auction Located Old Route 11, Danville, PA Melvin M Lehman, owner

5 AC JUNIATA CO., PA REAL ESTATE

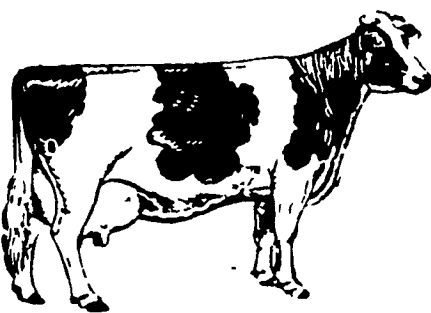
PUBLIC SALE

SATURDAY, SEPTEMBER 19

60 mi. west of Hbg., 6 mi. west of Mifflintown.

6 room dwelling, garage, pond.
For brochure, contact:

Long Bros., Aucls.
R.D. #2
Port Royal, Pa. 17082
Ph. 717-527-4784

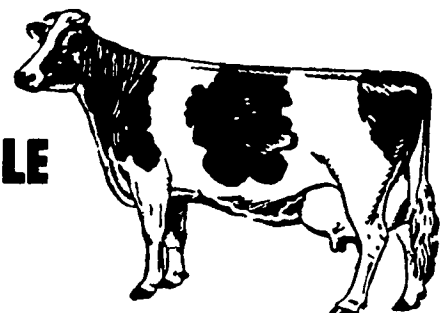


TREAT YOURSELF TO SOME ROYALTY THE 4TH ANNUAL PERRY COUNTY PRINCESS PROMOTIONAL SALE

Friday Evening, August 7, 1981 - 7:30 P.M.

45 HEAD OF PERRY COUNTY'S FINEST HOLSTEINS

* HOME OF THE HIGH COUNTY DHIA AVERAGE IN PENNA. 1980 *
ALL FRESH OR VERY CLOSE!



Selling at the Art Kling Sale Barn, located 12 miles N. of Carlisle on Rt. 74, 2 1/2 mi. N.E. of Landisburg, Perry Co., Pa.

Sires Represented Elevation, Jemini, Betty Chief, Milestone, Commander Magic of Lincoln Chromeview Jupiter, Wis Magician Lift-Off, Kitbuilder, Celebrity, Molly Chief, Ideal Loader Moonshot, Jet Stream, Job, Fury Ivan, Carlo Citamatt

Service Sires: Valiant, Majesty, Creek, Ace, Bell, Sexaton, Astronaut, Triple Threat Keho Eric, Matt Jr., Magic of Lincoln, Matador, Jemini

A Special Consignment from the Perry County Jr. Assoc.: Santee-Acres Celebrity Kim, sire by Rocby Elevation Celebrity. Her dam an 85 pt. 30,000 lb. 1000F. Monitor, 2nd Dam 88 pt. 20,000 lb. Galaxy. Proceeds to help sponsor Jr. Assoc. Projects and Developments.

HERE ARE SOME OF THE EARLY ENTRIES:

DANIEL ALBRIGHT sends a 87 pt. Big Apple due to Valiant, dam by Astronaut, Show Cow! plus a Woodbine Milkman from a GP Happy Crusader with 16,000 2nd dam VG Black Eagle with 30,000m 1000f.

KENNETH & JANE BENNER offer a Lift-Off due after sale to Bell, Dam VG with 18,000 2nd Dam with 24,000 836f, 3rd dam VG Kingpin 178,000 6788 lifetime. Big & Straight.

NEKODA VIEW FARM sends a Red Chrome View Jupiter from an R Maple, 2nd Dam Bootmaker due after sale to Triple Threat. A very good Fancy Red one.

DUMBELLE FARMS sends a Carlo due at Sale time to Magic, Dam a Kingpin Granddaughter VG-86 26,000m 1000f, 2nd dam GP 165,000 Lifetime; plus a Milestone due to Clinton Camp Majesty, next 3 dams all VG & all over 22,000m & 700f. (Don't miss her!); also sending a GP-83 Transmitter G.Dau. with 18,000 at 3 yr. Dam VG-88 Senator with 150,000 2nd Dam VG Ivanhoe with 110,000 - Fresh.

DUANE & JUNE HERTZLER send a very fancy Bend-Mead bred heifer due after sale, Dam GP Rocket 1000 Index, 2nd Dam 21,000 VG Star 3rd Dam Kingpin 4-Gem. 1000+ Sres. A Hot One!

JOHN E. BOOK offers a Dumbelle Elevation Correlation due first calf to Startrek, dam by Dina Charm with 20,000 at 2 yrs., 2nd dam Fair Hill Elevator 18,000. One to Watch.

KLINGDALE FARMS sending a Commander from a Lift-Off with 25,000, 2nd dam 16,000 Transmitter. A Good Big Heifer.

RICHARD KRIEBEL, sends a Betty Chief just fresh, dam an 84 pt (Ex. Mam) Elevation with 19,000, 2nd dam Kate Daughter with 15,800; plus an Ideal Leader due to Triple Threat from a GP Elevation with 15,000 at 2 yr., 2nd dam GP Star, 3rd dam VG Performer.

V. ART KLING is sending an extremely fancy Kit Builder from a 20,000 dam due before sale to Pacemaker Son.

RICHARD MAURER offers a Van just fresh GP 81, 2-06, 16,937m, 656f, dam 19,000 725f, 2nd dam Rosni 17,000 700f.

Kling's Auction Service, Mgrs.
Tom Dum, III, Selector, Fred Naugle, Pedigrees

TIM denDULK sends a 2nd Calf Citamatt with 15,000 559 at 1-10, dam Lift-off with 18,000, 2nd dam 20,000.

DONALD DUM offers a very good Lift-Off with 15,000 from a GP Kingstead Ivanhoe with 18,000. Just Fresh!

BENJAMIN DUM sending an Ideal Leader 1st Calf Heifer from a 20,000 Jet Stream from a 20,000 Vern Dtr., next 2 dams also over 20,000.

MERRIMART FARMS, a Jemini from a VG Lucky with 16,382 666 at 2 yrs., 2nd dam 83 pt. Sterk Ivanhoe with 17,000 660, due after sale to Ace. Also selling a Jemini from a GP Gent dam with 18,000 741 due to Matador, plus a Job from 19,000 Elevation Granddaughter. Will be Fresh.

FRED & NANCY NEELY send a Countdown Dtr. GP-81 with 16,000 at 2 yrs., dam by Elevation, 2nd dam 24,000. FRESH.

CLARENCE MARTIN sends an Astronaut Granddtr. with 14,000 at 3 yr., very fancy udder will be springing to Milu Son.

CARL McMILLEN sends a Big Fancy Commander due to Ace, dam with 18,700 4.1% 775, next dams 17,000 and 22,000, 5th dam Kingpin.

DAVID E. ROTH, JR. sends a VG Ivan A1 with 20,000 2nd dam Pencor GP-83 with 20,000 due after sale to Astronaut.

WAYNE STEPHENS sends a Trump from an Elevation with 18,000 668, 2nd dam Kingpin with 19,000. FANCY HEIFER due after Sale.

RICHARD SMITH sends a Trump from an Elevation GP 82 with 17,000.

RAY McMILLEN sends a Fancy Elevation GP-82 at 2 yr. 2nd dam Kingpin 16,000 656, 3rd Dam VG Bellringer with 18,000 629. Should go VG, is fresh.

RICHARD BRATTON sends a Fury Ivan with 638 Fat a 1-10, next 2 dams both over 22,000 and 100,000 Lifetime.

REAMAC FARMS sends two, a Moonshot making 16,000 at 2 yr. dam 83 Bonus 3 time over 20,000, also a fancy Wis Magician from an Astronaut with 15,700 565, next dam 18,000.

HARRY BOOK, Silver Shade SeaGem from 16,000 Dam, Big Heifer.

MILLGAN BROS. sends a VG Lift-Off with 23,000 due after sale to Matt Jr., also a GP Jet Stream with 20,000 as a 2 yr. old.

Sale Sponsored by
PERRY COUNTY HOLSTEIN CLUB