

PUBLIC SALE
REAL ESTATE AND FARM MACHINERY
THURS. EVE., AUGUST 20, 1981
 At 5:30 P.M.

Located approx. 5 miles north of Delta and about 3 miles south of Norman Wood Bridge off Rt. 74, turning at Snyders Cannery on Snyder Rd. then Castle Finn Rd. to place of sale in York Co., Pa. Watch for signs leading to sale.

7:00 P.M. REAL ESTATE 7:00 P.M.

Farm containing 76 acres more or less, of which about 45 acres are good tillable farmland & balance is woodland & pasture.

Improvements are a lg. 7 room frame house w/bath & partially remodeled kitchen, new plumbing throughout the house; 26 x 52 farrowing house w/farrowing crates & nursery pens & storage over head & several other outbuildings

For inspection by appt call 301-838-4900. Terms 10% down day of sale with balance in 60 days.

5:30 PM FARM MACHINERY & TOOLS 5:30 PM

Oliver 1750 diesel tractor w/WFE, 18.4x34 tires & in good condition; JD F-145 4-14" bottom semi-mount plows; JD KBA 32 disc; 7 ft transport kalfier disc; 1100 gal Better Built liquid manure spreader; Athens 10 ft. 3 pt. chisel plow w/3 bars & depth wheels; N.I. #510 manure spreader; N.I. 5 ft. rotary mower; new 6 ton bulk feed bin; Agstar automatic feeding system w/feeders; Smidley hog feeder; hog waterers; 70,000 BTU gas heater; 6-4500 BTU & 3-6800 BTU catalytic heaters; wheelbarrow; platform scales; rear blade; Penncraft 230 amp welder; Snapper 8HP riding mower; 102-6 ft. concrete hog slates for manure pit; log chains; fencing; snow fence; chicken feeders; hog troughs; elec. cords & many items on wagon not listed.

Terms: cash or approved check

JOHN W. THOMPSON, JR.

MARY L. THOMPSON, owners

RD 2, Delta, Pa.

Robert L. Sechrist, auctioneer
 Anderson & Warner, clerks

Not responsible for accidents

Public Sales Register

Closing Date - Monday, 5 00 P M
 of each week's publication

SAL, AUG 29 10 30 12 miles west of
 A M Public Sale of Real Estate, Household Goods and Antiques Located 14 miles east of Lancaster, Coatesville, just south of Rt 30, along Newport Ave in the village of Gap, Lancaster Co., PA Mary

Good's Auction

111 North Maple Ave.
 Leola, PA

Hay, Straw & Grain Sales
Every Wednesday
12:00 Noon

Farm Machinery
First and Third Wednesday
January thru November
starting at 9:00
With 6 Auctioneers

Tools and Hardware
Lawn & Garden Equipment
12:00 Noon
Farm Machinery - 12:30

No out of state checks
 No household Goods, no clothing.
 No poultry Equipment or scrap tin.

DAVID H. GOOD & SONS

RD 1 Leola, PA 17540
717-656-9558

PUBLIC SALE

THURSDAY, AUGUST 13

At 2:00 P.M.

Valuable York Co. Real Estate of Graybill B. and Almema S. Hoke, located off of Rt. 116 between Spring Grove and Menges Mills, Pa. near Spring Grove High School, in Jackson Twp.

HOKE HOMESTEAD FARM

150 Acres more or less with 60 acres pasture land fenced and with water, 4 acres woodland some with nut trees, 86 acres tillable farm land, never failing spring, reservoir on hill 110 bbl. capacity, good water pressure, wind pump and auxiliary pump, also stream through farm.

Colonial type house of brick construction with slate roof and partly stormed insulated, large balcony, 4 bedroom and bath on second floor, cupboards and closets, beautiful open stairway in natural wood, first floor has modern kitchen, dining room, living room, den and 1/2 bath, three part basement 1 cement, hot water heat gas fired, 85 gal. water heater.

Tenant house is of frame construction with asbestos siding and tin roof, 3 bedrooms, bath and sewing room on second floor, kitchen, living room and dining room on first floor, 2 part basement fully cemented, oil fired hot air heat, partly stormed, 56 gal. hot water heater.

Large stone construction summer house with tin roof.

Stone spring house with slate roof.

Large 105 ft. + 50 ft. barn with good timbers and slate roof, utility shed with tin roof, smoke house with shingle roof, chicken house tin roof, sheep stable tin roof, workshop tin roof, two car cement block garage asbestos roof, corn barn and shed comb. with slate and tin roof, frame garage and utility shed tin roof, large implement shed slate roof, large shed for hay storage or other use tin roof, tile silo, all buildings are in good repairs.

Not responsible for any accidents.

Terms of real estate 10% day of sale. Bal. on or within 60 days, for inspection of real estate call 717-225-1946 for appt.

GRAYBILL B. & ALMENA S. HOKE
 R.D. #3 Spring Grove, Pa.
 Tel. 717-225-1946

Charles L. Wehry, Auct. 235-4146
 Louis T. Guthrie, Attorney 632-5315

PUBLIC SALE

NEW, USED & ABUSED FARM EQUIPMENT & TOOLS

WEDNESDAY, AUGUST 12

At 9:30 A.M.

Located between Leola and New Holland turn off Rt. 23 on South Groffdale Road turn left on Musser School Road, Lancaster, Pa.

Tractors

930 Case Comfort King Diesel; 930 Case Standard with Turbo Diesel; 919 Allis Chalmers Gas; D17 Allis Chalmers Gas; W-450 International Diesel; Farmall M; 55 Massey Harris Gas; Model L. Case.

New Equipment

323 N.I. 1 row Cornpicker; 8 ft. Brillion Packer Seeder; 206 N.I. Spreader; 6 ton Farm Built Wagon Gear on steel; Pittsburgh Spring Harrow; Pull Type Disc; Gravity Bins; USED EQUIPMENT - McCormick No. 7 and No. 9 Cutters; 16" and 19" Papec Cutters; C40 Gehl Cutter; #5 Oliver Cornpicker; 1 PR McCormick Cornpicker; N.I. 323 Picker; Roto Beater; J.D. and M.C. 2 Way Plows; 24 KBA Disc; N.I. Wheel Rake; N.I. 4 Bar Rake; 2 Grain Drills; Ground Drive and P.T.O. McCormick Cornbinders; J.D. P.T.O. Cornbinder; Loaders for all Corn Binders; 271 and 273 N.H. Balers; McCormick Silage Blower; Rosenthal Husker Shredder; Truck load of Tools.

Auctioneer's Note - Not many small items, we expect more items day of sale. Sale at 9:30.

Terms are cash. Out of state checks must be approved by seller.

Terms by
ELIAS S. BEILER
 601 Musser School Rd.,
 Leola, Pa. 17540

Auctioneers
 Robert E. Martin & Son, 656-7770
 Frank L. Steller, 656-8195
 Blaine Rentzel
 Food by Bareville Auxiliary
 Not Responsible for Accidents.
 Closed Sundays.

M Usner, Owner Diffenbach's Auctioneers

MON AUGUST 31 - 2 P M Danville Livestock Market, cattle and hog auction Located Old Route 11, Danville, PA Melvin M Lehman, owner

SEPTEMBER

WED SEPT 2 - 9 A M Consignment Sale by David H Good located 1/2 mile North of Route 23 on North Maple Ave in Leola, Lancaster Co, Pa Watch for sale signs F Snyder, R Martin, C Wolgemuth, J Fry and L Horst, Auctioneer

THURS SEPT 3 - Monthly Cow Sale at the Melvin Kolb, Inc Sales Barn, 2220 Dairy Road, Lancaster, Pa 17601 Dennis Kolb, Sales Manager, Robert Mullendore, Auctioneer

MON SEPT 7 2 P M Danville Livestock Market, cattle and hog auction Located Old Route 11, Danville, PA Melvin M Lehman, owner

MON SEPT 7 - Public Sale of Household Goods, Antiques and Farm Equipment Located along Rt 124 2 miles west of East Prospect, York Co Daniel Hoover Owner Nevin Z Martin and Lewis B Groff Aucts

MON, SEPT 7 - Labor Day Antique Farmersville Auction In Farmersville, 3 mi East of Brownstown.

Lancaster County, PA John J Rutt, Auctioneer

MON SEPT 7 9 30 A M Public Sale of the Sadie Schannauer Estate located along Rt 897 midway between Reinholds and Balinsport, Lanc Co, PA Sale of Real Estate, Coins, and Household Goods HH Leid Auction Service

MON SEPT 7 10 A M Public Sale of Real Estate, Antiques & Collectibles and Household Items Located along Rt 209, 1 mi west of Lykens, PA in the Village of Big Run Esther Boxwell, Owner Dockey & Dockey, Auctioneers

THURS SEPT 10 - Dispersal of Holstein Dairy Cattle Directions take Rt 272 North from Ephrata to Schoeneck Road, take Schoeneck Road to Schoeneck, turn right at Fire Hall to first farm on right Sale by John M and Lena H Nolt, John E and Paul E Martin, Auctioneers

THURS SEPT 10 Farm Equipment Sale at Horsts Machinery lot, located 1 mile east of Marion, PA Ralph W Horst Manager

FRI SEPT 11, 5 30 P M Gap Auction Antiques and Household Goods sold at every auction Located off Rt 41, Lancaster Turkey Hill Minit Market, cross RR bridge, Ira Stoltzfus & Son, Auctioneers

FRI SEPT 11 - 6 30 P M

Houvale Farms 7th Yorkshire Production Sale of Bred Gilts, Open Gilts and Boars at the Lebanon Fair Grounds, Lebanon, PA for info contact Elwood E Houser 717-272-5798 or 273 2921

FRI, SEPT 11 - 9 30 A M Located at the Belleville Livestock Market Annual Fall Machinery Sale, all kinds of machinery on consignment Glick, Gibboney and Gilligan, Auctioneers

SAT SEPT 12 - 10 A M Public Sale of Household Goods & Antiques Take Rt 322 East from Ephrata, Pa to Hinkletown, at Hinkletown turn South on to Farmersville Rd, go to T Rd, property on right next to Sensenig's Furniture Sale by Levi M Hoover Auctioneers John E & Paul E Martin

SAT, SEPT 12 - 10 A M Consignment Sale of Farm Equipment and Horse Drawn Implements located Route 11 and 15, 8 miles North of Liverpool and 9 miles South of Selinsgrove, Port Trevorton RD#1, Pa Sale by Elmer Stauffer, Frank Snyder and B D Imes, Auctioneers

SAT SEPT 12 - 9 A M Public Sale of Antiques & Collectibles, Household Items, Farm Machinery and Misc Located 1 mile east of Rt 225, 10 mi south of Trevorton, PA in the village of Red Cross John V Maurer Estate Dockey & Dockey, Auctioneers

MON SEPT 14 - 2 P M Danville Livestock Market, cattle and hog auction Located Old Route 11, Danville, PA Melvin M Lehman, owner

WED SEPT 16 - 9 A M Consignment Sale by David H Good located 1/2 mile North of Route 23 on North Maple Ave in Leola, Lancaster Co, Pa Watch for sale signs F Snyder, R Martin, C Wolgemuth, J Fry and L Horst, Auctioneer

THURS SEPT 17 - Monthly Cow Sale at the Melvin Kolb, Inc Sales Barn, 11342 Cragerstown, Rd, Woodsboro, Md 21798 Thomas Miller, Sales Manager, Robert Mullendore, Auctioneer

THURS SEPT 17 - 7 P M Real Estate Sale of 2 Homes Located 12 miles south of Lancaster on Rt 272 From Lancaster to the Buck west on 372, go 1 mi and left on Susquehanna Drive, 2 1/2 mi to property Sale by Harry Shoun Auctioneer - Harry Whiteside

FRI, SEPT 18 - 6 30 P M Public Sale of Real Estate Located south of Rt 340 in Intercourse on Queen Rd, Henry S Esh Owner Robert E and Jeffrey R Martin and Frank L Steller, Auctioneers



PUBLIC SALE

OF VALUABLE REAL ESTATE
TUES. EVENING, AUGUST 18
 At 7:00 P.M.

Located at 210 West Main St. in the Borough of New Holland.

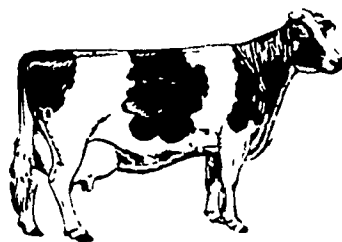
Lot 50 ft. by 270 ft. more or less
Erected on this plot a
2 1/2 Story Brick Dwelling

with new wood shingle roof. Kitchen with double stainless steel sink, dining room, living room with wall to wall carpet, open stair way, 3 bedrooms, closet space, full bath, attic floor insulated, L porch, full concrete basement with outside entrance, oil fired hot water baseboard heat with summer & winter hookup, all copper plumbing, 1/2 bath, town water and sewer, 2 car garage with 2 new fiberglass doors and new roof, concrete floor, 15x15 frame building.

Inspection of property, August 1 and 8 from 2 to 4 P.M. or call 354-8656 for appointment. 10% down day of sale, balance on or before October 19, 1981.

Terms by
SAMUEL H. & SARA M. MARTIN

Auctioneers
 Robert E. & Jeffrey R. Martin,
 656-7770
 Frank L. Steller, 656-8195
 Charles Benner, Atty.



NEW HOLLAND SALES STABLES
SUMMER HOLSTEIN PROMOTIONAL SALE

Held at New Holland Sales Stables
 New Holland, PA

FRIDAY, AUGUST 14 - 7:00 P.M.

125 HEAD REGISTERED HOLSTEIN

These animals will be consigned by our regular shippers and local breeders. Several good 1st calf heifers and few service age bulls. All animals 30 day tested for interstate shipment.

Catalogs night of sale.

Henry Kettering - pedigrees

For More Information Contact

Norman Kolb
 717-397-5538

Abe Diffenbach
 Office 717-354-4341