

# MILK MARKET NEWS

## DAIRY FARMERS TO VOTE ON CHANGING 29 MILK ORDERS

The U.S. Department of Agriculture is asking affected dairy farmers if they approve of a final decision that would amend price announcement procedures in 29 federal milk marketing orders. The results are scheduled to be compiled within 30 days.

The 29 milk orders are: St. Louis-Ozarks, Georgia, Tennessee Valley, Chicago Regional, Southern Illinois, Louisville-Lexington-Evansville, Indiana, Central Illinois, Greater Kansas City, Nebraska-Western Iowa, Upper Midwest, Neosho Valley, Wichita, Eastern South Dakota, Iowa, New Orleans-Mississippi, Greater Louisiana, Memphis, Nashville, Paducah, Fort Smith, Red River Valley, Oklahoma Metropolitan, Central Arkansas, Lubbock-Plainview, Texas, Central Arizona, Texas Panhandle and Rio Grande Valley.

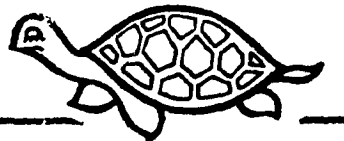
Herbert L. Forest, dairy official with USDA's Agricultural Marketing Service, said the final decision would provide that the Class II price for a particular month be announced on a tentative basis by the 15th day of the preceding month. This decision is based on the only proposal supported at a public hearing in Clayton, Mo., last August.

The final Class II price could not be less than the Class III price for

that particular month. The final Class II price would be announced by the fifth day of the following month when the Class III price is announced.

The hearing to consider changing the Class II price announcement procedures in the 29 orders was necessitated by an order of the U.S. Court of Appeals for the District of Columbia, which ruled the existing announcement procedures invalid.

**DON'T  
BE  
SLOW**



**Call Now To Place Your  
CLASSIFIED AD**

Ph: 717-394-3047 or 717-626-1164

## Perry Co. DHIA

(Continued from Page C42)

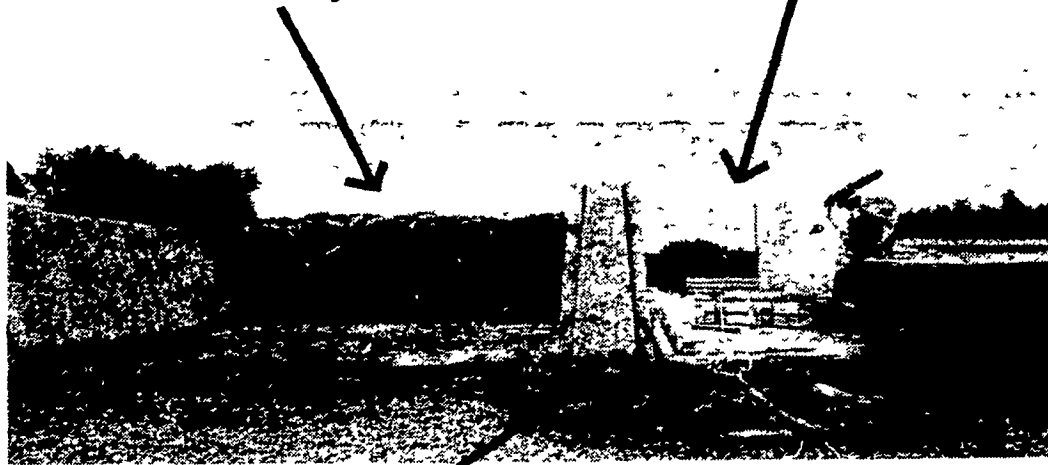
Delmar Brofee & Sons						
Annette	H	4-9	305	19,776	3.4	682
Kenneth R Benner						
Elenore	H	5-6	305	19,938	4.4	885
Sarah	H	3-7	305	21,649	3.7	810
Oscar & Wayne Campbell						
Dora	H	4-7	301	19,255	3.8	729
Anita	H	5-10	305	18,231	4.5	828
Francy	H	3-5	305	18,023	3.8	677
David H Weller						
Rosey	H	7-0	305	20,754	3.7	768
Richard Kriebel						
Hummer	H	6-7	305	23,305	3.7	860
Caramel	H	4-10	305	21,589	3.8	826
Earl E Krone						
Emily	H	7-0	305	22,091	4.2	928
John B Sauder, Jr						
Katie	H	5-5	305	15,551	4.3	668
Richard G Smith						
#12	H	6-6	305	20,269	3.7	740
Clarence S Martin						
#11	H	3-4	305	18,101	3.6	658
Ed. & Wilma McMillen						
Cindy	H	2-10	305	18,451	3.8	707
John L King						
Evelyn	H	3-3	305	20,570	3.7	758
Linda	H	7-0	305	19,606	3.4	658
Dale Smoker						
#14	H	3-1	305	14,898	4.6	689
#79	H	3-3	305	18,766	4.1	774
Edwin L Sheibley						
Peggy	H	5-3	305	20,028	4.0	792
Eugene M Nolt						
#31	H	3-9	305	20,182	3.5	697
#50	H	3-8	305	22,159	4.2	930
#104	H	3-9	305	20,904	3.4	712
Dobbs Brothers						
Clare	H	8-1	303	20,347	3.7	746
Cedar Lane Farm						
#53	H	4-3	305	22,850	3.8	864
#55	H	4-10	305	21,160	3.2	679
#79	H	6-10	305	19,365	3.9	753
Wayne L. Stephen						
Lorraine	H	8-9	305	16,975	3.9	666

New  
From...

**precast  
enterprises, inc.**

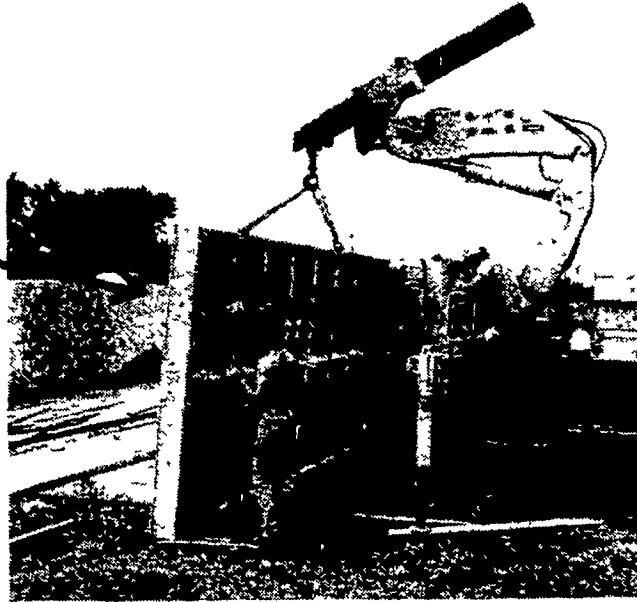
## PRE-CAST CONCRETE TRENCH SILO SYSTEM

- Allows Side By Side Construction To Fit Your Needs...



- Exclusive "A" Frame Concrete Support

- Panels Put In Place And Bolted Fast By Our Workmen



- Panels Also Adaptable For:
  - ★ Manure Holding Pits
  - ★ Building Walls, Floors And Ceilings
  - ★ Underground Homes

Unique Design Is Lightweight and Economical...And Provides The Strength Needed For All Building Requirements!

For More Information,  
Send Coupon, or Call  
And Ask For  
Monroe Stoltzfus

**PRECAST  
ENTERPRISES,  
INC.**

Box N, Bethel, PA 19507  
717-933-4101

For More Information on Trench Silos and Wall Panel  
Systems, Send This Coupon to:

**Pre-Cast Enterprises, Inc.**  
Box N, Bethel, Pa. 19507

Name \_\_\_\_\_  
Address \_\_\_\_\_  
Town \_\_\_\_\_ State \_\_\_\_\_  
Zip \_\_\_\_\_ Phone \_\_\_\_\_

## LAWN-BOY Utility

A quality mower  
at a budget price.

**\$199<sup>00</sup>**

List \$249.95



Model 8602

**LAWN-BOY UTILITY SELF-PROPELLED  
ROTARY MOWER 20 INCH**

- \* Pressure back piston ring maximizes compression, improves fuel economy and aids starting.
- \* Instant response air vane governor. Friction reducing needle bearings at critical points and increased engine displacement.
- \* Fingertip starting. Quiet operation. Long life durability. Electronic ignition.
- \* Fixed jet carburetion. Two cycle continuous engine lubrication through fuel mixture.
- \* Four square steel deck with double wall front and back.
- \* Patented flexible vinyl rear shield. Fingertip height adjustment 1" to 3".
- \* Smooth 8" rubber tires and rust resisting rims and hubs
- \* Extra long floating handle for maneuverability.
- \* Spring loaded chute extension.
- \* Rear wheel self-propelling squeeze and go control.

**Bombergers STORE**

ELM, PA (717) 665-2407