

Lebanon Fashion Revue

Lancaster Farming, Saturday, July 25, 1981—C29



Junior Division Finalists at the Lebanon 4-H Fashion Revue were Sylvia Royer, Nicole Werni, and Lisa Bachman.

Can't beat natural drying for HM corn

WASHINGTON, D.C. — Adding solar heat or any other form of low-temperature supplemental heat to dry high-moisture shelled corn is not economically feasible, according to the USDA Economics and Statistics Service, when compared with natural airflow drying.

Solar-supplemented per-bushel costs far exceeded returns in the west central Great Plains, the corn-growing region with the highest average annual solar radiation.

The simulated analysis in the USDA report used 20 years of weather and solar radiation data for Dodge City, Kansas, an 8,000-bushel drying and storage system, and batch-in-bin and layer-in-bin drying methods. Price and cost data for the 1979/80 marketing year served as the economic base.

Supplemental solar heat had no effect on the batch-in-bin (single fill) strategy in good drying years, and failed to stem deterioration in poor drying years. High-moisture corn cannot be consistently preserved without using high-

temperature dryers.

Should fossil fuel for operating high-temperature grain dryers no longer be available, farmers insisting on fast harvest may choose to let their corn deteriorate a grade in poor drying years rather than invest in an uneconomical low-temperature dryer, USDA points out.

Layer-in-bin drying, although a method that could slow harvest, required no supplemental heat, even in years of high humidity after harvest. The addition of solar heat resulted in appreciable corn overdrying.

Results of a simulation model show farmers can dry high-moisture corn more economically through natural airflow than by any form of supplemental heat, including solar energy. Farmers may allow more than 50 percent of their corn to deteriorate to grades No. 3 or 4 (low-quality corn), in poor drying years, and still lose less money than by installing a solar collector or some other supplemental heat source, USDA concludes.

YORK CO. 4-H ROLLER SKATING PARTY
 7-10 P.M.
TUESDAY, JULY 28
 Roll-R-Way West
 Delco Plaza

INDUSTRIAL BENCH GRINDER
\$59.95
 (2) 6" dia. x 5/8" wheels.
 1/2 hp bb 115 vac motor.
 OSHA shields, push button on/off switch.
 We pay shipping & Costs
 Send check or we can ship UPS-COD 39 lbs

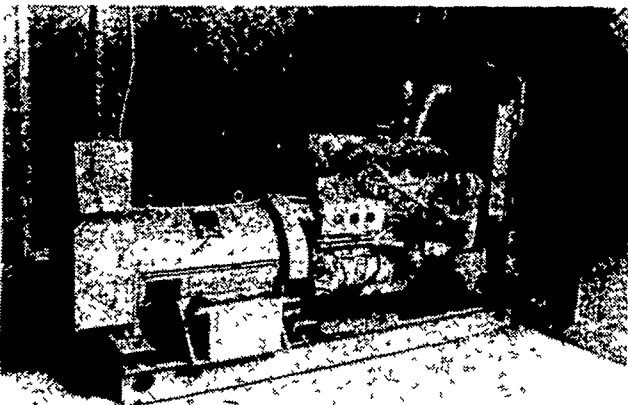


WILKE MACHINERY CO.
 1519 Mt. Rose, Dep. LF, York, Pa. 17403
 WMC Telephone 717-843-4924 WMC

KATOLIGHT DEPENDABLE EMERGENCY POWER

• Dairy • Poultry • Hog

for... Controlled Environment, Automated Feeding Operations



Katolight Standby Power Packages give you the finest in power outage protection. Wide choice of models in sizes to 250 KW. Automatic or push-button transfer; gasoline or diesel fuels. Extra overload capacity. Models for irrigation, also.

Low Cost Protection Agri-Alternator

Could pay for itself in one blackout. Can be run continuously until power is restored. PTO drive Use for portable power, too. Sizes to 150 KW.



SYCAMORE IND PARK
 255 PLANE TREE DRIVE
 LANCASTER, PA 17603
 (717) 393-5807



HESHEY EQUIPMENT COMPANY, INC.
 Route 30 West At The Centerville Exit

MINEX

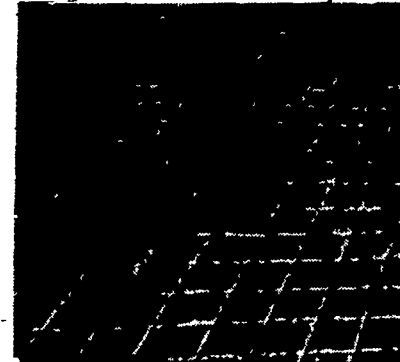
THE MINERAL EXCHANGE

Do you have an outcrop, old mine, or other evidence of a mineral deposit - clay, talc, soapstone, marble, white limestone, metallics, etc.? For free site inspection and sample analysis contact us - we have a history of success in getting minerals from the field to the market place.

1003 E. King Street
 Lancaster, PA 17602
 717-394-6334

Slick Problem Areas?

DAIRYMEN: CONCRETE-GROOVING
 Cuts Grooves in Concrete Floors



Grooves 1/2" wide x 1/4" deep - 4" apart

- PREVENT SPLITS
- INSTALL IN HOLDING AREAS
- IMPROVE HEAT DETECTION
- INSTALL IN FEEDING AREAS
- PREVENT BROKEN LEGS
- ELIMINATE COWS SKIDDING
- PREVENT CRACKED CONCRETE
- INSTALL IN ALLEYS

Why not join the increasing number of dairymen throughout the Eastern states who now receive profitable benefits from this service.

CONTACT US TODAY!
CONCRETE GROOVING, INC.
MERLE BECKER
 399 S. Reading Rd., Ephrata, PA 17522
 PHONE (717) 733-7589