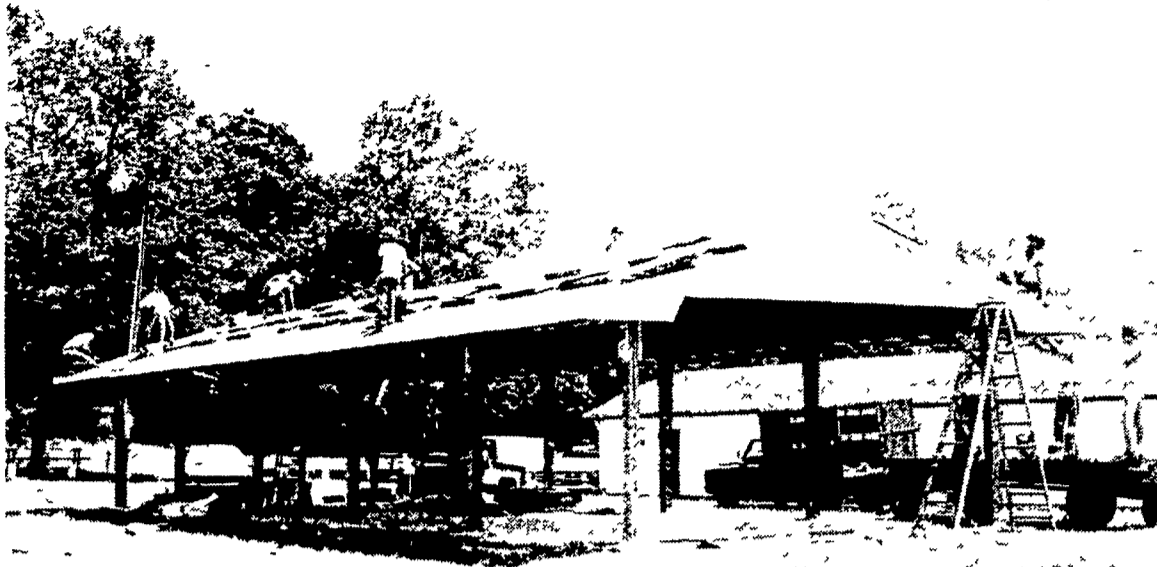


New Lampeter Fair stand



When the West Lampeter Fair opens on September 24, there will be a new food concession stand for helping to handle the hungry crowds.

The new 24 X 64-foot stand was built as a joint cooperative venture of the Fair Association and the Lampeter-Strasburg FFA Chapter. Directing the efforts were Glenn Book and Doug Rohrer, of the Association, and Dick Yencer, FFA advisor and vo-ag teacher at Lampeter Strasburg.

Some 35 FFA members worked on the project, figuring out the materials needed for the stand, designing the building and fabricating the truss rafters.

"It was an excellent opportunity for the Chapter to have a practical work project experiment in construction of a farm building," Yencer explains.

In the above photo, FFA members and Association representatives begin to roof the stand as a final phase of construction.

To Canada and Mexico

USDA lifts mandatory inspection

NEW YORK, N.Y. — Starting July 1, U.S. grain shipped by rail or truck to Canada and Mexico was exempted from mandatory inspection and weighing under the U.S. Grain Standards Act, a U.S. Department of Agriculture official said.

However, Kenneth A. Gilles, administrator of USDA's Federal Grain Inspection Service, said official inspection and weighing will still be available on request.

"Waiving the requirement for official inspection and weighing of land shipments of grain to Canada and Mexico should be helpful to many country elevators and other small shippers — without impairing the objectives of the act," Gilles said.

"This limited exemption will remove a burden on the trading of U.S. grain to Canada and Mexico while retaining the right of either buyers or sellers to official inspection and weighing if desired."

Grain shipped to Canada and Mexico over water must still have official inspection and weighing.

Many country elevators and other small shippers have been exporting grain since January, 1980 under a rule which permitted them to ship up to 15,000 metric tons of grain annually without having to obtain official inspection

and weighing. However, many of these small shippers are expected to exceed the limit soon due to a sharp increase in grain exports to Mexico.

U.S. grain exports by rail and truck to Mexico through May of this year were 1.98 million metric tons, compared to 1.19 million metric tons during the same period last year — a 66 percent increase, Gilles said.

Several U.S. exporters requested the rail and truck exemption, Gilles said, with the concurrence of the principal grain purchasing agency for the Mexican government.

The 15,000 metric ton limit exemption from inspection and weighing will remain in place for grain shipments to all points except Canada and Mexico.

Notice of this action was published in the June 25 Federal Register as an interim final rule, effective July 1.

Comments are requested so a final document discussing any needed changes may be published as soon as possible. Comments must be submitted in writing by no later than August 4 to the Issuance and Coordination Staff, Rm. 1127, Auditors Bldg., USDA/FGIS, Washington, D.C. 20250.

SENENIG'S SPOUTING

Rd 3, New Holland, PA 17557

- ★ Seamless Spouting in a variety of colors.
 - ★ Made on the job.
 - ★ New or repaired.
 - ★ Old style half round spouting
- Quality Workmanship
at Low Rates

FREE ESTIMATES

717-354-4481
Nelson S. Sensenig

CARROLL CO. 4-H & FFA FAIR



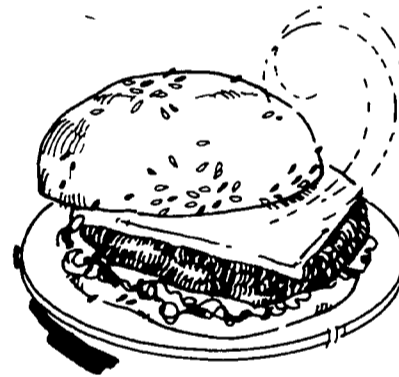
TRACTOR PULL

Sunday, August 2
12 Noon

Rain Date - Aug. 9

Located at the Carroll Co. Ag Center in Westminster, MD. Take Rt. 140 to Center Street-follow signs.

- ★ Admission \$5
- ★ \$3 for Senior Citizens, Ages 7-12, and 4-H members with cards.
- ★ Ages 6 and Under-Free.



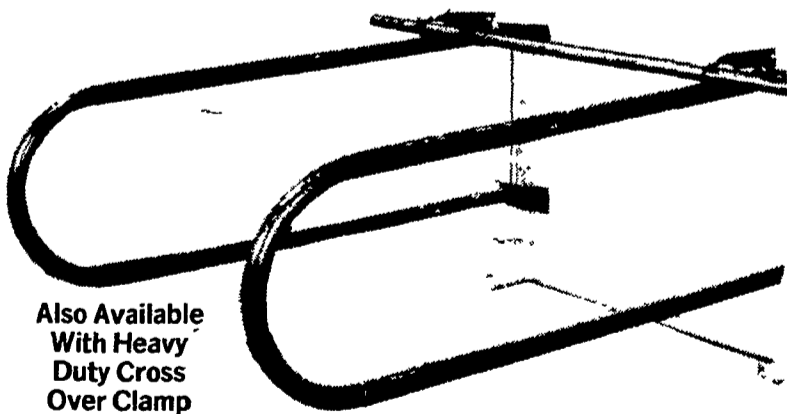
CHEESE ON BURGERS

a picnic delight



"T" LOOP STALLS

With EASY LIFT TRAINING BAR
Which Prevents Trapped Cow Problems



Also Available With Heavy Duty Cross Over Clamp

Stall tubing 2-3/8 inches outside diameter, 12 ga. (.102) wall thickness, high yield steel, 75,000 p.s.i. tensile strength.

ALSO AVAILABLE

- Standard Free Stalls
- Fencing
- Gates (38" - 48" - 54" high)
- Automatic Head Gates
- Automatic Gate Latches

PAUL B. ZIMMERMAN, INC.

Hardware • Farm Supplies
Custom Manufacturing
Crane Service

Box 128 R D #4, Lititz, PA 17543
Wood Corner Rd
1 Mile West of Ephrata
Phone 717-738-1121



SOLO 410/423

3 HP & 5 HP

Models Available

spraying distance up to 35 ft. adaptable for dust, liquid, granuals

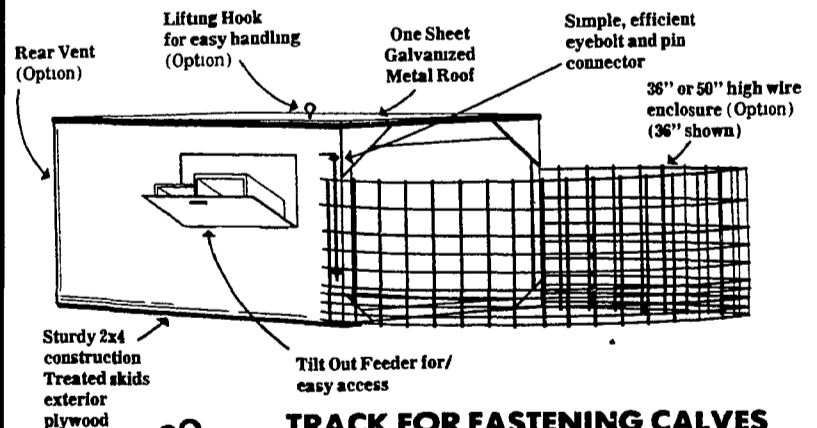
Ideal for tobacco sucker control

Lancaster County's only dealer specializing in sprayer Sales & Service

LESTER A. SINGER

Ronks, PA
Ph (717) 687-6712
Dealer inquiries invited on all Solo Products

Compare the Stoltzfus Woodwork Calf Hutch



ALSO AVAILABLE: TRACK FOR FASTENING CALVES CHAINED TO CEILING OF HUTCH

Dealers: (Calf Hutches Only)

Adams County:
LIPPY & RINEHART SALES
Glen Lippy, Littlestown, Pa
717-359-5793 or
John W Rinehart, Taneytown, MD
301-346-7326

Berks County:
JOE RUTH
RD #4133 Fleetwood, Pa 19522
215-944-7571

Lebanon County:
UMBERGER'S MILL
Rt 322, RD#4 Lebanon, Pa
717-867-5161

Chester County:
ZOOK'S FARM STORE
Honey Brook, Pa.
215-273-2943

MFD. BY: **STOLTZFUS WOODWORK**
RD 2, Box 2280, Gap, PA 17527
717-442-8972

★ DEALERSHIPS AVAILABLE IN SOME AREAS ★