

York Co. gears up for plowing contest

DOVER — Dover's Young Farmers Association and the Extension service are again teaming up to put on the York County Agronomy Field Day, with a new twist added to this year's program.

As part of the July 21 and 22 variety plot tours and field day, county and state plowmen will converge at the host farms for their annual plowing competition. York contestants will throttle up their favorite diesels at 10 a.m.

sharp on July 21, and the winners will try for a repeat trophy at the state level at 10 a.m. on July 22.

Host for the plowing portion of the field days is the Meisenhelter Farm on South Salem Church Road, southwest of Dover. Just a quarter-mile away at the Charles Rauhauser farm, visitors can observe field test plots of corn and alfalfa varieties, tillage methods, and farm chemical comparisons. Some two dozen seed and chemical companies will set up commercial displays at the tour headquarters.

Extension and industry specialists will be standing by various plots to answer questions as visitors tour the plots via farm wagons, which will leave at frequent intervals from the Rauhauser farm. Wagon tours will operate from 12:30 through 5:30 p.m. both days of the event.

Another special attraction will be tillage demonstrations, beginning at 2:30 p.m. on both July 21 and 22, featuring various tillage machinery including no-till grain and alfalfa drills. Equipment demonstrations will be at the Meisenhelter farm, along with several displays from area machinery dealers.



If you have fat cattle or need feeders.

THINK NEW HOLLAND

BEEF SALES

MONDAY — 1:30 P.M.
THURSDAY - 11:00 A.M.

Sale Order - Fat Bulls, Steers, Stockers and Beef Cows
Veal Calves - 4:30 Thurs.

NEW HOLLAND SALES STABLES, INC.

Phone: 717-354-4341

Daily Market Report - Phone: 717-354-7288

Abe Diffenbach, Manager -

Field Representatives

Alan Diffenbach 717-656-9806

Luke Eberly 215-267-6608

CATTLE SALES

- ★ Dairy Replacements
- ★ Registered & Grade Holsteins
- ★ Canadian & NY State Holsteins
- ★ 300 Holsteins to Choose From
- These cows are accustomed to tie stalls and freestalls
- ★ Heifers of All Ages
- ★ We Also Buy Entire Herds

WE ALSO BUY COWS & HEIFERS

Contact:

Charles D. Blaisure

Meshoppen, PA

717-833-2684 or 833-5848

FREE CONCERT IN THE

BEAUTIFUL NOTTINGHAM PARK

FRI., JULY 24, 1981

5 P.M. to ?

Located at Rt. 272 and Old Route 1 in Nottingham, PA.



FEATURING:

THE LEWIS FAMILY

Plus

- The Nottingham Four
- The Debusk-Weaver Family
- Fellowship Quartet
- And Others

AN OLE SHERIFF PRODUCTION
BROUGHT TO YOU AS
A COMMUNITY PROJECT

Co-op official receives award

SYRACUSE, N.Y. — Joseph C. Mathis, Economics and Research Manager at Eastern Milk Producers Cooperative Association, Inc., DeWitt, New York, is included in the 18th edition of Who's Who in the East, the cooperative announced Friday.

A native of Rome, New York, Mathis is an internationally known agricultural economist specializing in milk marketing and government regulation of the dairy industry. He did his undergraduate and graduate work at Cornell University.

Before coming to Eastern in 1970, Mathis was director of the Dairy Division of the New Jersey State Department of Agriculture. He also served as an economist with the U.S. Department of Agriculture in Hartford, Connecticut, for seven years.

Mathis has published extensively in the fields of dairy economics and government regulation of agribusiness. He writes a monthly column in the "Eastern Milk Producer", the house organ for Eastern Milk Producers Cooperative.

He serves as a consultant on several agricultural committees in Pennsylvania and New York, and belongs to a number of professional associations, including the American Agricultural Economics Association, the Northeastern Agricultural



Joseph C. Mathis

Economics Council, and the National Economists Club.

He also is active in several community organizations and currently heads the Rotary Club of DeWitt, New York.

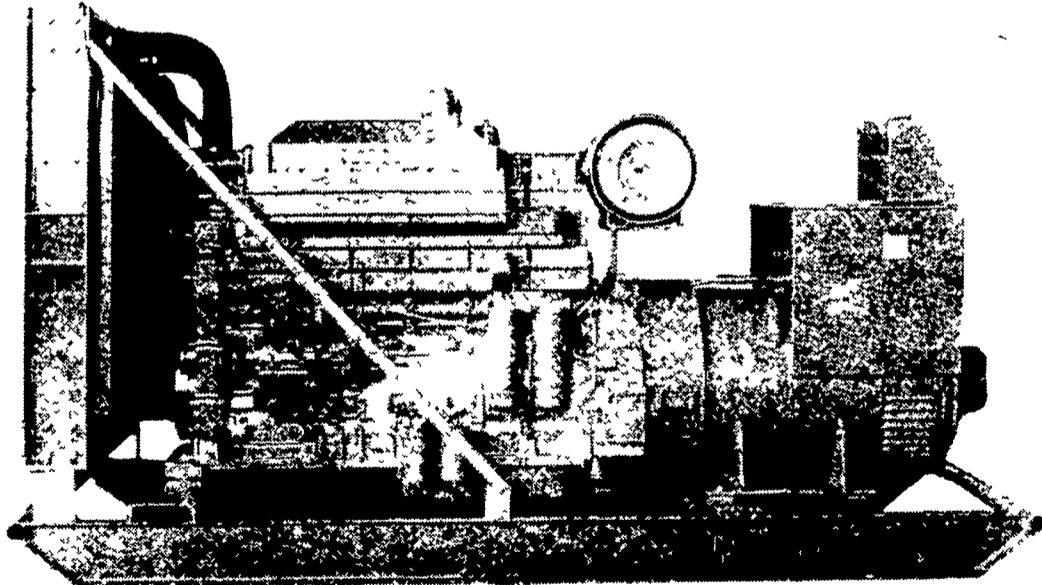
PENNSYLVANIA AGRICULTURE



WE'RE GROWING BETTER

SUMMER STORMS CAN STRIKE ANY HOUR,
BUT YOU CAN KEEP GOING WITH

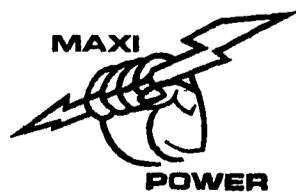
MAXI-POWER



375 KW

Generators

- ★ 1-1000 KW
- ★ Manual or Automatic
- ★ Switch Gear
- ★ Parts
- ★ Service



MAXI-POWER GENERATOR SYSTEMS

330 Fonderwhite Road, Lebanon, PA 17042

PH: 717-274-1483

Division of Leonard Martin Company

PRO-SIL

Silage Activator



STEERS AND MILK COWS LIKE PRO-SIL TREATED SILAGE AND SO DO THEIR OWNERS



Because It:

- Makes A Balanced Feed program
- Makes Silage More Palatable
- Preserves Corn Silage
- Has No Urea
- Reduces Feed Cost
- Makes Farmers Money
- Makes Maximum Efficiency of Corn Crop

GET THE FULL STORY FROM YOUR PRO-SIL DEALER

MARTIN'S AG SERVICE

c/o John Z. Martin

RD 1, Box 716, New Holland, PA 17557

717-354-4996 or 354-5848