

## Public Sales Register

Closing Date - Monday, 5:00 P M  
of each week's publication

AUG 20, 21, & 22 9:30 AM each day Martin's Carriage, Sleigh and Antique Auction at Inter course, PA Limited to 300 horse drawn vehicles, horse related items, antiques and furniture Martin Auctioneers, 717 354-7006

THURS AUG 20 - 6:45 PM Public Sale of Real Estate Located 1 mile west of Elizabethville, along Rt 209 in Washington Twp, Dauphin Co, PA 6 miles east of Millersburg Charles & William F Botts Owners George & Mike Deibert Auctioneers

THURS AUG 20 7 PM Public Sale of 10 Acre Farmette, Located 214 Skyview Lane, Warwick Twp, Lancaster Co, PA Take Rt 222, Rt 772 (Newport Rd) turn right onto Skyview Lane Terms by S K Sholtzberger, Inc T Glenn Horst and Timothy G Horst Auctioneers

FRI AUG 21 6:30 PM Consignment of Feeder Cattle & Feeder Pigs at Keister's Middleburg Auction Sales, Inc Rt 522, 3 miles East of Middleburg, 5 miles West of Selingsrove, Pa Don & Wait Keister, Owners, Ray Long & Dave Imes Auctioneers

FRI AUG 21 6 PM Arnold's 19th Production Sale of Bred Gilts, Open Gilts, and Boars at the Lebanon Fairgrounds, Lebanon, PA For info contact Leon Arnold 717-273 5880

FRI AUG 21 9:00 AM Public Sale of Excellent lot of Farm Equipment, located 1 mile west of Mercersburg, Franklin Co, PA on Rt 16 Mrs W L Grossnickle Owner J Robert Meyers Auctioneer

FRI AUG 21, 5:30 P M Gap Auction Antiques and Household Goods sold at every auction Located off Rt 41, Lancaster Turkey Hill Minit Market, cross RR bridge, Ira Stoltzfus & Son, Auctioneers

SAT AUG 22 - 10:00 AM Public Sale of Tools, Household Goods, Antiques, Located 1 mile NE of Intercourse, 3 miles south of New Holland on corner of N Hollander Rd and Ridge Rd Sale by Abner F and Katie Z Beiler Auctioneers - Robert E Martin and Son 656-7770 and Frank L Steller 656 8195

SAT AUG 22 - 9:00 AM 13th Annual Community Sale at the Leesport Auction Grounds, along Rt 61N of Reading Sponsored by Berks Co Powona Grange Farm Equipment, Household Goods and Antiques 7 Auctioneers

SAT AUG 22 10:00 AM Public Sale of Antiques and Collectibles, Household and Misc Items, Chev Impala Located 7 miles north of Hegins, PA, 2 miles west of Rt 125 (Watch for sale signs along Rt 125 day of sale), 3 miles southwest of Franklin Square in the Mahantongo Valley Cliff fert Hepler Dockey & Dockey Auctioneers

MON AUGUST 24 2 P M Danville Livestock Market, cattle and hog auction Located Old Route 11, Danville, PA Melvin M Lehman, owner

WED AUG 26 11:00 AM Pennstar Registered and Grade Holstein cow and heifer sale, 60 registered and Grade Holstein sell at the farm, 1 mile south of Quarryville, PA Carl G Troop, VMD Owner Remsburg Sale Service Manager  
WED AUG 26 - 6 P M PA

4th Performance Tested Boar Sale held at PA Dept of Agriculture Meat Animal Evaluation Center, 651 Fox Hollow Rd, State College PA 16801 Selling Approx 60 boars

FRI AUG 28, 5:30 P M Gap Auction Antiques and Household Goods sold at every auction Located off Rt 41, Lancaster Turkey Hill Minit Market, cross RR bridge, Ira Stoltzfus & Son Auctioneers

FRI AUG 28 Annual Lebanon Co Holstein Club Sale to be held at the Lebanon Area Fairgrounds Harry H Bachman Auctioneer

SAT AUG 29 - 11 AM Consignment Horse Sale at the Keister's Middleburg Auction Sales, Inc Rt 522, 3 miles East of Middleburg, 5 miles West of Selingsrove, Pa Don & Wait Keister, Owners Ray & Dave Imes Auctioneers

SAT AUG 29 9:00 AM 6th Annual Public Sale by the Bareville Fire Co 211 E Main St, Leola, PA Furniture, Quilts, Tools, Dry Goods Groceries

SAT AUG 29 11:00 AM Public Sale of Real Estate, Antiques, Collectibles, Household and Misc Items Located on Rt 147 Main St, Herndon, PA Cloyd E Ziegler Estate Dockey & Dockey Auctioneers

SAT AUG 29 Public Sale of Farm Equipment, Guns and Misc Items at Mary E Forney Farm near Lewisberry, PA West off Rt 83 at Newberrytown exit Ralph W Horst Auctioneer

MON AUGUST 31 2 P M Danville Livestock Market, cattle and hog auction Located Old Route 11, Danville, PA Melvin M Lehman, owner

### SEPTEMBER

THURS SEPT 3 - Monthly Cow Sale at the Melvin Kolb, Inc Sales Barn, 2220 Dairy Road, Lancaster, Pa 17601 Dennis Kolb, Sales Manager, Robert Mullendore, Auctioneer

MON SEPT 7 2 P M Danville Livestock Market, cattle and hog auction Located Old Route 11 Danville, PA Melvin M Lehman, owner

MON SEPT 7 Public Sale of Household Goods, Antiques and Farm Equipment Located along Rt 124 2 miles west of East Prospect, York Co Daniel Hoover Owner Nevin Z Martin and Lewis B Groat Auctioneers

MON, SEPT 7 - Labor Day Antique Farmersville Auction in Farmersville, 3 mi East of Brownstown, Lancaster County, PA John J Rutt, Auctioneer

THURS SEPT 10 Dispersal of Holstein Dairy Cattle Directions take Rt 272 North from Ephrata to Schoeneck Road, take Schoeneck Road to Schoeneck, turn right at Fire Hall to first farm on right Sale by John M and Lena H Nolf,

John E and Paul E Martin, Auctioneers

THURS SEPT 10 Farm Equipment Sale at Horst Machinery lot, located 1 mile east of Marion, PA Ralph W Horst Manager

FRI SEPT 11, 5:30 P M Gap Auction Antiques and Household Goods sold at every auction Located off Rt 41, Lancaster Turkey Hill Minit Market, cross RR bridge, Ira Stoltzfus & Son, Auctioneers

FRI SEPT 11 6:30 P M Houvale Farms 7th Yorkshire Production Sale of Bred Gilts, Open Gilts and Boars at the Lebanon Fair Grounds, Lebanon, PA for info contact Elwood E Houser 717-272-5798 or 273-2921

SAT SEPT 12 - 10 AM Public Sale of Household Goods & Antiques Take Rt 322 East from Ephrata, Pa to Hinkletown, at

Hinkletown turn South onto Farmersville Rd, go to T Rd, property on right next to Sensenig's Furniture Sale by Levi M Hoover Auctioneers John E & Paul E Martin

MON SEPT 14 - 2 P M Danville Livestock Market, cattle and hog auction Located Old Route 11, Danville, PA Melvin M. Lehman, owner

## PUBLIC AUCTION

OF HEIFERS  
& FARM MACHINERY  
SAT., JULY 25

11 a.m.

Located 1 mile east of Strasburg along Rt. 896, first farm on the left.

Registered Arlinda Chief Jemini and Lawcrest Marvex Twin bred to Marvex, due October. Arlinda Jet Stream bred Elevation due November. Identified grades- 2 Toppers, 1 Willie Star, 1 Ideal Superior, 1 Snowman-all bred to Marvex, due Aug. and Sept. Several grade heifers due Aug.-Nov. 1 bred to Elevation. Open Heifers.

8 gas tractors-Int. 140, new cond. with 1 pt. hookup cultivators, plow, platform, disc harrow; Int. 656 fast hitch, WFE; Farmall W6 w/TA and PTO; Farmall 300; Farmall 200 fast hitch with cultivator; Ferguson 30 w/3 pt. hitch; Farmall F20 and F12. 1978 Odyssey Honda, 250 cc engine, all terrain vehicle. 2 row Int. 650 harvester with recutter, like new; 1 row Int. 350 harvester; Int. 1 pr cornpicker; Int. 531 4 btm. plow, new; JD corn binder, PTO; Int. fast hitch 2 row cornplanter; comb. roller/harrow; Int. fast hitch disc harrow; Ferguson 3 pt. 8' spring harrow, good cond.; Int. 440 baler; JD hay fluffer; McCormick-Deering grass seeder, 7'; NI model 101 lime spreader, Dunham cultipacker; NI manure spreader, ground driven; Bush Hog 14 h.p. hydrostatic drive w/48" mower, reel type power mowers; mower knives; Troybilt rototiller, 6 h.p., new; Hahn Eclipse tiller, 3½ hp; belt drive circular saw; chain saw; garden duster, fast hitch, spray frame and boom; tractor radio; tires and rims size 12-15; bag wagon, wheelbarrow, cattle racks for 8' pickup; tool box for pickup; tool set; platform scales, shovel harrow, oil barrel with hand crank; dog house; poultry equipment; hog feeder; Star 8 can milk cooler; 3 sets of double and 2 sets single tobacco ladders; tobacco lathes; tobacco clippers and spears; some hay.

Many items too numerous to mention. Not responsible for accidents day of sale. Refreshments available.

No out of state checks.

Terms By  
**EUGENE M. ROHRER**

Auctioneers:  
Lloyd H. Kreider  
Randal V. Kline  
Gary L. Shirk



**Donald Yost, Atty.**  
**Blakey Yost Bupp & Kilgore**  
42 East King Street, York, PA 17404  
**Wm. F.C. Marlow, Jr. Atty.**  
**Marlow & Peddicord**  
504 Baltimore Ave., Towson, MD 21204

### ESTATE AUCTION

VALUABLE INCOME PRODUCING  
APARTMENT BUILDING

Village of Bryansville, Peach Bottom Township, York Co. Pennsylvania. This highly desirable, 4 apartment, unit is situated on Bryansville Square. An ideal investment property this attractive old landmark could serve as a home with three apartments remaining. There is a large barn on the property that is useful for a garage and storage.

The personal representative will offer for sale on the premises at public auction on

**SATURDAY, JULY 25, 1981**

At 11:00 A.M. O'Clock

Located on the square, Village of Bryansville, York County, Pennsylvania.

TERMS OF SALE: Cash or certified check deposit in the amount of \$3,000.00 will be required of purchaser at time and place of sale. For further details & legal description and inspection of property, contact auctioneers

Estate of  
**CARL W. MILLER** Deceased

Fay Miller, Personal Representative

**JERVIS S. MARSHALL, Auctioneers**

3531 Mt. Zion Road

Upperco, Maryland 21155

301-239-8187

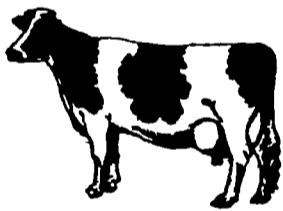
## SPECIAL HOLSTEIN DAIRY SALE

TUESDAY, JULY 21

8 P.M. D.S.T.

To be held at

**SMOKETOWN QUALITY DAIRY SALES**  
Route 340, Smoketown, PA.



5 mi. East of Lancaster - 5 mi. West of Intercourse.

One load of fancy Reg. and Grade. Fresh and Springing cows and heifers. Out of New England states. Cows milking 50-70 lbs. milk per day.

Special Mention - Twenty-eight cows out of New York State - 100 head Dispersal. Cows due July - August. Four head out of Vermont Dispersal and Six cows out of Mass. dispersal. Some cows with records from 17,000M. to over 19,000 lbs. of milk.

Sires include - Canyon View Rock Shane - Bred to Thonyma Starcraft. Record - 3 yr. 3 m. incomplete Estimated 17,089M. 606F. Dams records - 3 yr. 9 m. 282d. 18,690m. 591F. - 4 yr. 8 m. 300d. 20,535m. 620F. 5 yr. 7 m. 310 d. 21,358m. 668F.

Sire - G.P. Raylane Man-O-War - Bred to A-Lume Hollow Admiral. Sire - Born - 2-20-78 Zion - Meadows Admiral.

Sire - Born 8-29-78 Reynoland Cockney Prince.

Also selling - Fresh 1st calf heifer - Grade - Her sire son of Gay Ideal. Dam made from 12,000 to 14,000 lbs. m.

Vacc - Grade Heifer - just bred to Son Elevation - out of an Ex. Bootmaker Dam - record 22,950m. 707F.

Vacc - open Heifer Grade - ready to bred, sired by Senog Double Benefactor Chief. Dam Est. 15,000m. 565F.

Bulls to be sold at beginning of sale.

Reg. Holstein Bull - Marvex out of Jerry Daughter V.G. 89 as 3 yr. old over 18,000m. 650F. Proven Bull dam could go EX. Grade Holstein Bull - Sire Marvex - Born Nov. 1979. Dam-Pawnee Farm Arlinda Chief.

Records - 2 yr. 5 m. 368d. 16,393m. 4.4T 712F.

2nd Dam - Astronaut - 14,309m. 535F.

3rd Dam - Ivanhoe - 17,689m. 650F.

Grade Holstein Bull - Sire Sky Lark Comet - Dam over 49%.

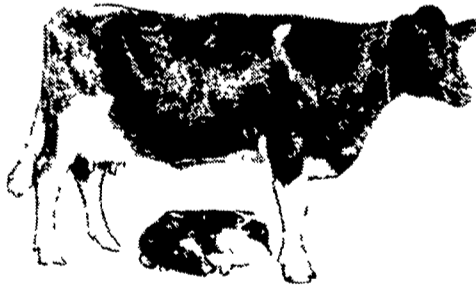
Cows milked at Regular time.

Cash or good check night of Sale.

Sale by,  
**GORDON W. FRITZ**  
717-393-0930

Carl Diller - Paul Snyder Auctioneers  
Henry Kettering, Pedigrees

Lunch Bird-in-Hand Auxiliary



## COMPLETE HERD DISPERSAL

Held at Shady Lane Dairy Sales, Inc. ¼ mile west of Quarryville on Oak Bottom Rd.

**THURSDAY, JULY 23**

8:00 P.M. DST

**130 Head of Registered & High Grade Holsteins**

This sale consists of a Herd Dispersal of 60 Head fresh & springing, all stages of lactation. A lot of summer & fall young cows, you will be buying this herd in their working clothes, due to quick sale. Also small herd of 21 Virginia cows, mostly fresh and springing with several fall cows.

A real group with cows weighing up to 1600 lbs.

Also 10 head from New Jersey herd due this summer and fall 40 head of close and fresh cows bought from farm dispersals

### Special Mention

6 Registered & Grade stock bulls. Including 2 Marvex twins with dams records of 23,675M 3.7% test and 872F.

Farmers and dealers—if you want good cows or stock bulls plan to attend this sale This is the place where you make the price No cows sold prior to sale. All must go Free transportation to Lancaster Co Amish. Must call by sale day

Owners,

**SHADY LANE DAIRY SALES, INC.**

Glenn & David Fite  
717-786-2750 or 1725