

REAL ESTATE AUCTION
TUESDAY EVENING, JULY 21, 1981
5:30 P.M.

Located in Perry County, Juniata Twp., 2 miles West of Little Buffalo State Park, on the corner of Little Buffalo Rd. #431 and Cold Storage Road (Legislative Rd. 50005), 1 mile South of Skyline Corner.

133 ACRE FARM, Wooded and Open with 3 Bedroom Frame House, over a mile of Road Frontage on Cold Storage Road and Little Buffalo Road; Little Buffalo Creek flows through property.

Farm will be offered in 5 different tracts and then offered as a whole.

TRACT #1: 33 Acres in Cold Storage Road and Corner of Little Buffalo Rd.; Approx. 1/4 Open Fields, Balance hardwoods and pines with small stream; Road Frontage on 2 Roads.

TRACT #2: Frame House and outbuildings on 10 Acres, Approx. 1/2 Wooded. Lot has Pasture on Little Buffalo Creek. 3 to 4 Acre open field in back of house. (Nice for the Horse Lover)

TRACT #3: 42 Beautiful Acres, approx. half good open farm ground; Sets high on the hill; Outstanding View. Comes with several farm roads.

TRACT #4: 34 Acres, approx. 1/2 Open farm ground, balance wooded. (Hardwoods & Pines) 2 Small streams; Very secluded. Lot has farm road from front to back. "If you want privacy, HERE IT IS!"

TRACT #5: 14 Acres on both Sides of Little Buffalo Creek, approx. 1/2 open, balance wooded. Prime Building Lot.

"All lots come with good Perk Test and Survey. All have ample Road Frontage!"

Property will be offered as 5 separate tracts and then offered as a whole.

TERMS: 20% Down, Balance within 30 Days. ONLY 2 MILES FROM LITTLE BUFFALO PARK. COUNTRY LIVING ONLY 30 MINUTES FROM HARRISBURG.

REBECCA L. GREEN ESTATE

Roger T. Green (814) 692-8576
 Barbara G. Reidlinger (717) 921-2441
 (717) 921-2722

Sale By: Kling's Auction Service
 Landisburg, Pa.
 (717) 789-3883

Public Sales Register

Closing Date - Monday, 5:00 P.M.
 of each week's publication

SAT AUG 1 - 2 P.M.
 Public Auction of 10.09 acre Farm Location - Take Rt 272 north from Ephrata to Rt 897, 1 1/2 mi to Holtzman Road, go 9/10 mi to Black Horse Road turn right to first farm on left Owners-

Eugene K. Martin and Earl S. Martin Auctioneers - John E. and Paul E. Martin

SAT AUG 1 - 10:00 A.M.
 Public Sale of Real Estate Lot #1 7 room rancher, Lot #2 2 acre woodland lot, Household Goods and Tools Located 2 miles south of Rt 322 along Narvon Rd midway bet-

ween Blue Ball and Honey Brook Elmer T. & Joan Fryburger Auctioneers Leroy S. Horst and Arthur E. Nolt

SAT AUG 1 - 8:30 A.M.
 Public Sale of Nelson Farm Supply, Equipment, Furnishing, Fixtures, Parts and Supplies Located along South Main St., in the Borough of Biglerville, Adams Co., PA Musselman Fruit Products and Gettysburg National Bank Owners Clair R. Slaybaugh Auctioneers

MON AUGUST 3 - 2 P.M.
 Danville Livestock Market, cattle and hog auction Located Old Route 11, Danville, PA Melvin M. Lehman, owner

TUES AUG 4 5:30 P.M.
 Public Sale of Real Estate Located in Perry Co 10 miles west of Loysville on PA Rt 850, adjoining Tuscarora State Forest Daniel Derr II Owner Kling's Auction Service

THURS AUG 6 - Monthly Cow Sale at the Melvin Kolb, Inc Sales Barn, 2220 Dairy Road, Lancaster, Pa 17601 Dennis Kolb, Sales Manager, Robert Mullendore, Auctioneer

FRI AUG 7 - Perry Co Princess Promotional Sale Sponsored by Perry Co Holstein Club Kling's Auction Service, Mgrs., Landisburg, PA

FRI AUG 7, 5:30 P.M.
 Gap Auction Antiques and Household Goods sold at every auction Located off Rt 41, Lancaster Turkey Hill Mint Market, cross RR bridge, Ira Stoltzfus & Son, Auctioneers

FRI AUG 7 7:30 P.M.
 Public Sale - 4th Annual Perry Co Princess Promotional Sale Held at Art Kling Sale Barn, 12 miles north of Carlisle on Rt 74, 2 1/2 mi NE of Landisburg, Perry Co, PA Perry Co Holstein Club Kling's Auction Service

Lancaster Farming, Saturday, July 18, 1981-D29

Managers
 SAT AUG 8 - 10:00 A.M.
 Public Sale of Real Estate, Antiques and Collectibles and Personal Property, Located 2 miles northeast of Hegins along Valley Rd in Deep Creek Valley, Hegins Twp., Schuylkill Co., PA 8 miles west off I-81 exit 35 Ida M. Shadle Owner George and Mike Deibert Auctioneers

SAT AUG 8 - 145 Cows at Auction, Located 8 miles south of Dover, turn west from US Rt 13 at sign to Woodside, go thru village to farm, 1 1/2 miles from Rt 13 Woodside, DE Ann Ayr Farm Owners

MON AUGUST 10 - 2 P.M.
 Danville Livestock Market, cattle and hog auction Located Old Route 11, Danville, PA Melvin M. Lehman, owner

MON AUG 10 - 9:30 A.M.
 Consignment Sale Located at S. Race St., Myerstown, Pa 17067 Sale held by Wengers Farm Machinery, Inc

MON AUG 10 - 10 A.M.
 Public Sale of Large NY State Potato Farm Held in Wayland, NY Pirrung Auctioneers

MON AUG 10 - 5:30 P.M.
 Public Sale of Farm Equipment Located in York Co, PA 2 miles east of Spring Grove on Rt 116, thence turn south onto Bairs Station Rd and go to Bairs Fire Hall and turn west 1/4 mile to sale William H. Sentf Owner Clair R. Slaybaugh Auctioneer

WED AUG 12 - Public Sale of New & Used Farm Equipment and Tools Located miles south of Rt 23, between New Holland and Leola, turn off S Groffdale Rd at 601 Musser School Rd Robert E. Martin & Son 656-7770, Frank L. Steller 656-8195 and

Blaine Rentzel Auctioneers
 THURS & FRI AUG 13-14 Large Sale of Farm Equipment at Horst Machinery Lot, 1 mile east of Marion, PA Ralph W. Horst Manager

THURS AUG 13 - 2:00 P.M.
 Public Sale of Real Estate Held off of Rt 116 between Spring Grove and Menges Mills, PA near Spring Grove High School in Jackson Twp Graybill B and Almerna S. Hoke Owners Charles L. Wehrly Auctioneers

FRI AUG 14, 5:30 P.M.
 Gap Auction Antiques and Household Goods sold at every auction Located off Rt 41, Lancaster Turkey Hill Mint Market, cross RR bridge, Ira Stoltzfus & Son, Auctioneers

FRI AUG 14 - 7:00 P.M.
 New Holland Sales Stables Summer Holstein Promotional Sale Held at New Holland Sales Stables, New Holland, PA

SAT AUG 15 - 6:30 P.M.
 Danville Livestock Market, horse sale located Old Route 11, Danville, PA Melvin M. Lehman, owner

SAT AUG 15 - Little Kutztown Fire Co Consignment Sale 2 miles north of Myerstown, Lebanon Co Local Auctioneers

MON AUGUST 17 - 2 P.M.
 Danville Livestock Market, cattle and hog auction Located Old Route 11, Danville, PA Melvin M. Lehman, owner

THURS AUG 20 - Monthly Cow Sale at the Melvin Kolb, Inc Sales Barn, 11342 Cragerstown, Rd., Woodsboro, Md 21798 Thomas Miller, Sales Manager, Robert Mullendore, Auctioneer

SPECIAL DRIVING HORSE SALE
FRIDAY EVENING, JULY 24, 1981

Tack at 6:30 P.M.
 Horse Sale 7:00 P.M.
 Horses Hitched at 12:00 Noon



at
NEW HOLLAND SALES STABLES, INC.

12 miles East of Lancaster, Pa.
 just off Rt. 23, New Holland, Pa.

2 Load Driving and Work Horses consigned by Ward Wright.

1 Load Driving Horses consigned by Don Boring.

1 Load Driving Horses consigned by Ben King.

1 Load Driving Horses consigned by Jones Beiler.

1 Load Driving Horses consigned by Clayton Waterbury.

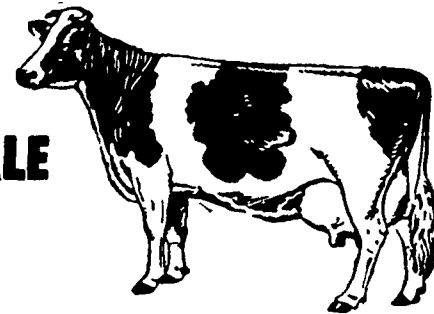
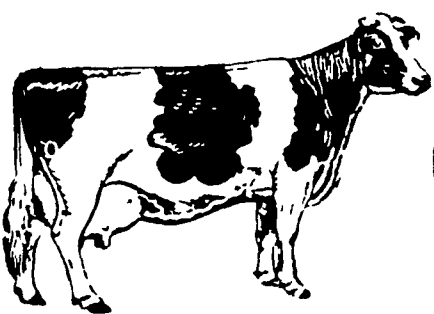
1 Load Driving Horses consigned by Reuben G. Stoltzfus.

1 Load Driving Horses consigned by Levi S. Stoltzfus.

For more information contact:

Abe Diffenbach, Mgr. 717-354-4341
 Norman Kolb 717-397-5538

TREAT YOURSELF TO SOME ROYALTY
THE 4TH ANNUAL
PERRY COUNTY PRINCESS PROMOTIONAL SALE
Friday Evening, August 7, 1981 - 7:30 P.M.



45 HEAD OF PERRY COUNTY'S FINEST HOLSTEINS

* HOME OF THE HIGH COUNTY DHIA AVERAGE IN PENNA. 1980 *
ALL FRESH OR VERY CLOSE!

Selling at the Art Kling Sale Barn, located 12 miles N. of Carlisle on Rt. 74, 2 1/2 mi. N.E. of Landisburg, Perry Co., Pa.

Sires Represented: Elevation Jemini Betty Chief, Milestone Commander Magic of Lincon Chromeview Jupiter Wis Magician Lift-Off, Kitbuilder, Celebrity Molly Chief, Ideal Leader Moonshot, Jet Stream, Job, Fury Ivan Carlo Citamatt

Service Sires: Valiant, Majesty, Creek Ace, Bell, Sexation, Astronaut, Triple Threat, Keho Eric Matt Jr. Magic of Lincon Matador, Jemini

A Special Consignment from the Perry County Jr. Assoc.: Santee-Acres Celebrity Kim, sire by Rocby Elevation Celebrity. Her dam an 85 pt. 30,000 lb. 1000F. Monitor, 2nd Dam 88 pt. 20,000 lb. Galaxy. Proceeds to help sponsor Jr. Assoc. Projects and Developments.

HERE ARE SOME OF THE EARLY ENTRIES:

DANIEL ALBRIGHT sends a 87 pt. Big Apple due to Valiant, dam by Astronaut, Show Cow! plus a Woodbine Milkman from a GP Happy Crusader with 16,000 2nd dam VG Black Eagle with 30,000m 1000f.

KENNETH & JANE BENNER offer a Lift-Off due after sale to Bell, Dam VG with 18,000 2nd Dam with 24,000 836f, 3rd dam VG Kingpin 178,000 6788 lifetime. Big & Straight.

NEKODA VIEW FARM sends a Red Chrome View Jupiter from an R Maple, 2nd Dam Bootmaker due after sale to Triple Threat. A very good Fancy Red one.

DUMBELLE FARMS sends a Carlo due at Sale time to Magic, Dam a Kingpin Granddaughter VG-86 26,000m 1000f, 2nd dam GP 165,000 Lifetime; plus a Milestone due to Clinton Camp Majesty, next 3 dams all VG & all over 22,000m & 700f. (Don't miss her!); also sending a GP-83 Transmitter G.Dau. with 18,000 at 3 yr. Dam VG-88 Senator with 150,000 2nd Dam VG Ivanhoe with 110,000 - Fresh.

DUANE & JUNE HERTZLER send a very fancy Bend-Mead bred heifer due after sale, Dam GP Rocket 1000 Index, 2nd Dam 21,000 VG Star 3rd Dam Kingpin 4-Gem. 1000+ Sires. A Hot One!

JOHN E. BOOK offers a Dumbelle Elevation Correlation due first calf to Startrek, dam by Dina Charm with 20,000 at 2 yrs., 2nd dam Fair Hill Elevator 18,000. One to Watch.

KLINGDALE FARMS sending a Commander from a Lift-Off with 25,000, 2nd dam 16,000 Transmitter. A Good Big Heifer.

RICHARD KRIEBEL, sends a Betty Chief just fresh, dam an 84 pt. (Ex. Mam) Elevation with 19,000, 2nd dam Kate Daughter with 15,800; plus an Ideal Leader due to Triple Threat from a GP Elevation with 15,000 at 2 yr., 2nd dam GP Star, 3rd dam VG Performer.

V. ART KLING is sending an extremely fancy Kit Builder from a 20,000 dam due before sale to Pacemaker Son.

RICHARD MAURER offers a Van just fresh GP 81, 2-06, 16,937m, 656f, dam 19,000 725f, 2nd dam Rosni 17,000 700f.

TIM denDULK sends a 2nd Calf Citamatt with 15,000 559 at 1-10, dam Lift-off with 18,000, 2nd dam 20,000.

DONALD DUM offers a very good Lift-Off with 15,000 from a GP Kingstead Ivanhoe with 18,000. Just Fresh!

BENJAMIN DUM sending an Ideal Leader 1st Calf Heifer from a 20,000 Jet Stream from a 20,000 Vern Dtr., next 2 dams also over 20,000.

MERRIMART FARMS, a Jemini from a VG Lucky with 16,382 666 at 2 yrs., 2nd dam 83 pt. Sterk Ivanhoe with 17,000 660, due after sale to Ace. Also selling a Jemini from a GP Gent dam with 18,000 741 due to Matador, plus a Job from 19,000 Elevation Granddaughter. Will be Fresh.

FRED & NANCY NEELY send a Countdown Dtr. GP-81 with 16,000 at 2 yrs., dam by Elevation, 2nd dam 24,000. FRESH.

CLARENCE MARTIN sends an Astronaut Granddtr. with 14,000 at 3 yr., very fancy udder will be springing to Milu Son.

CARL McMILLEN sends a Big Fancy Commander due to Ace, dam with 18,700 4.1% 775, next dams 17,000 and 22,000, 5th dam Kingpin.

DAVID E. ROTH, JR. sends a VG Ivan A1 with 20,000 2nd dam Pencor GP-83 with 20,000 due after sale to Astronaut.

WAYNE STEPHENS sends a Trump from an Elevation with 18,000 668, 2nd dam Kingpin with 19,000. FANCY HEIFER due after Sale.

RICHARD SMITH sends a Trump from an Elevation GP 82 with 17,000

RAY McMILLEN sends a Fancy Elevation GP-82 at 2 yr. 2nd dam Kingpin 16,000 656, 3rd Dam VG Bellringer with 18,000 629 Should go VG, is fresh.

RICHARD BRATTON sends a Fury Ivan with 638 Fat a 1-10, next 2 dams both over 22,000 and 100,000 Lifetime.

REAMAC FARMS sends two, a Moonshot making 16,000 at 2 yr. dam 83 Bonus 3 time over 20,000, also a fancy Wis Magician from an Astronaut with 15,700 565, next dam 18,000.

HARRY BOOK, Silver Shade SeaGem from 16,000 Dam, Big Heifer.

Sale Sponsored by
PERRY COUNTY HOLSTEIN CLUB

Kling's Auction Service, Mgrs.
 Tom Dum, III, Selector, Fred Naugle, Pedigrees