



PUBLIC AUCTION

THURSDAY, AUGUST 20
AT 6:45 P.M.

1 mile West of Elizabethtown along Route 209 in Washington Township, Dauphin County, Pa.; 6 miles East of Millersburg.

46 ACRES

Parcel No. 1: CORNER LOT 110 Ft. x 234 Ft. FRONTAGE on Southside Route 209 and Paved Township Road T-462 (Mohr Road) 8-ROOM DWELLING, HEAT & BATH.

Parcel No. 2: 36 ACRES with 378 Feet FRONTAGE on Paved Township Road T-462 (Mohr Road). Approximately 32 ACRES TILLABLE balance Pasture and Wooded Area. Nice Farm Pond. Small Stream. (Parcels No. 1 and No. 2 are adjoining and will be offered as separate tracts and as one unit).

Parcel No. 3: 9 ACRES located north of Route 209 and Parcels No. 1 and No. 2. This Parcel has access from Paved Township Road T-462 (Botts Road). A beautiful level piece of real estate in high state of cultivation, however, because there are several new homes in the immediate area, this parcel would be prime for future development! A survey of the above land has been completed.

FOR INSPECTION OF REAL ESTATE or SURVEY MAPS CALL: (717) 362-8680 or 362-8015.

TERMS: 10% down the day of sale, further terms and conditions to be announced when real estate is offered at 7:00 P.M.

PERSONAL PROPERTY

Coal Range; Beam Scale; BUTCHER KETTLES with Stands; Brine Barrel; Seeder; Counter Top Platform Scale; Oak Sideboard; Lawn Furniture; Dinettes Set; Victorian Side Chair; Automatic Dryer; Other Items Not Listed.

CHARLES R. BOTTS & WILLIAM F. BOTTS

Owners

Earl Richard Ertweiler, Attorney

George & Mike
Auctioneers & Realtors
717-425-3313

DEIBERT

PUBLIC SALE

THURSDAY, AUGUST 13
AT 2:00 P.M.

Valuable York Co. Real Estate of Graybill B. and Almerna S. Hoke, located off of Rt. 116 between Spring Grove and Menges Mills, Pa. near Spring Grove High School, in Jackson Twp.

HOKE HOMESTEAD FARM

150 Acres more or less with 60 acres pasture land fenced and with water, 4 acres woodland some with nut trees, 86 acres tillable farm land, never failing spring, reservoir on hill 110 bbl. capacity, good water pressure, wind pump and auxiliary pump, also stream through farm.

Colonial type house of brick construction with slate roof and partly stormed insulated, large balcony, 4 bedroom and bath on second floor, cupboards and closets, beautiful open stairway in natural wood, first floor has modern kitchen, dining room, living room, den and 1/2 bath, three part basement 1 cement, hot water heat gas fired, 85 gal. water heater.

Tenant house is of frame construction with asbestos siding and tin roof, 3 bedrooms, bath and sewing room on second floor, kitchen, living room and dining room on first floor, 2 part basement fully cemented, oil fired hot air heat, partly stormed, 56 gal. hot water heater.

Large stone construction summer house with tin roof.

Stone spring house with slate roof.

Large 105 ft. x 50 ft. barn with good timbers and slate roof, utility shed with tin roof, smoke house with shingle roof, chicken house tin roof, sheep stable tin roof, workshop tin roof, two car cement block garage asbestos roof, corn barn and shed comb. with slate and tin roof, frame garage and utility shed tin roof, large implement shed slate roof, large shed for hay storage or other use tin roof, tile silo, all buildings are in good repairs.

Not responsible for any accidents.

Terms of real estate 10% day of sale. Bal. on or within 60 days, for inspection of real estate call 717-225-1946 for appt.

GRAYBILL B. & ALMENA S. HOKE

R.D. #3 Spring Grove, Pa.

Tel. 717-225-1946

Charles L. Wehrly, Auct. 235-4146

Louis T. Guthrie, Attorney 632-5315

Scabies cases show marked drop

NEW YORK, N.Y. — A U.S. Department of Agriculture veterinarian said there were 128 cases of psoroptic cattle scabies mites in the United States from October to May, 1981—nearly half the 247 cases identified during the same period a year earlier.

"But," said Glen Schubert of USDA's Animal and Plant Health Inspection Service, "these figures may be misleading. This pest is

most active and most frequently found during winter months. "Drought and low cattle prices this past winter kept the number of cattle grazed in the Panhandle and High Plains down to 35 percent of normal.

"In most years a great share of scabies outbreaks are found in cattle on winter wheat pastures. With fewer cattle on winter wheat, detection procedures may not have been adequate."

Texas, with 25 confirmed cases, had the most known scabies cases during the season, followed by Kansas with 18 and Colorado with 16. Missouri recorded its first case

in at least 20 years.

For state and federal scabies eradicators, the major problem of the season occurred when scabies mites were identified on cattle freshly shipped from the Navajo Nation in northern New Mexico. Traceback investigations found mites on cattle wearing two different brands on tribal lands. Some 15,000 animals were dipped to eradicate this outbreak.

Scabies is a contagious disease of cattle caused by tiny, parasitic mites that pierce the skin of cattle and feed on body fluids released from the wound.



CONSIGNMENT HORSE SALE

SATURDAY, JULY 25
11:00 A.M. Sharp

Tack sold at 9:30 A.M.

Horses Hitched at 9:00 A.M.

(If weather permits)

KEISTER'S MIDDLEBURG AUCTION SALES, INC.

Route 522, 3 miles East of Middleburg
5 miles West of Selinsgrove

WORK HORSES

One load of sharp standardbred, carriage & buggy horses.

For Information Call

717-992-1490 or 717-837-2222

KEISTER'S MIDDLEBURG AUCTION SALES, INC.

Rt. 522 - RD 3, Middleburg, Pa.

Owners

DON & WALT KEISTER

Ray Long & Dave Imes Auctioneers

Terms - Cash

Trucking Available

Restaurant Open

"J-BEL"

HOLSTEIN DISPERSAL

Tuesday Evening, July 28, 1981
7 P.M.

At the John Mummau farm in Franklin County. Midway between Shippensburg, Pa. and Chambersburg, Pa. Turn west off Rt. 11 at Wen-Lee farm, next farm back.

43 REGISTERED & 5 GRADES

CERTIFIED • ACCREDITED • MAJORITY VACCINATED • CLASSIFIED

PREGNANCY CHECKED • D.H.I. RECORDS
A good number fresh, several due Aug. and Sept. Every cow with a complete lactation has a record above 15,000 milk, 600 fat, 6 from 20,000 to 26,000 milk, 4 from 903 to 995 fat. 3 classified good, all the others are G+ or V.G. A high testing herd.

A few selling — Bootmaker dau. 5 y 347 da., 24,614 milk, 3.9% - 959 fat. Bred to Gay, has a Doctor dau. in milk, and a younger Pacemaker dau.

Elevation dau. 3y. 8 mo. 305 day. 19,636 milk, 3.7% - 730 fat, has an Astronaut G. dau. with 2y. 7 mo. 365 da. 18,129 milk, 5.1% - 922 fat. due second time July 18 to Paclamar Romulus. Also an April heifer by Romulus.

A V.G. Molly Chief and an Hbg. Gay Ideal maternal sisters, both over 700 fat with good test and offspring.

Others equally as good. Other cows sired by Ivanhoe Star, Orbit, Moonshot, Charm-r and Optimist.

Heifers from cows selling sired by Astronaut, Milestone, Matt Carlo, Pacemaker, Molly chief, etc. Some bred heifers due in Sept. others from yearlings to calves.

John Mummau is also selling 11 heifers, 6 yearlings and 5 younger heifers.

Service sires include Very, Gay, Superior and others.

A good foundation herd to build on.

SELLING SEMEN — 40 straws of Vincent View Molly Chief.

SALE UNDER COVER - CATALOGS

Sale by

JAY R. & BEVERLY BEIDEL

RD 3 Shippensburg,

Pa. 17257

Ph. 717-532-6521

V. Art Kling, Auct.

W. Gossert, Clerk

Fred Naugle, Pedigrees

R7, Carlisle, Pa. 17013

Public Sales Register

Closing Date - Monday, 5:00 P.M.
of each week's publication

JULY

SAT JULY 18 - 6:30 P.M.
Danville Livestock Market, horse sale
Located Old Route 11,
Danville, PA Melvin M
Lehman, owner

SAT JULY 18 10:00
A.M. Public Sale of Real
Estate Heavy Equipment,

Trucks, Cars, Household
Goods Located 15 miles
south of Williamsport, PA
1 1/2 miles NE of Muncy off
Muncy-Hughesville Rt
405 Highway C E Sones
Excavating Owners Max
Fraleigh and Son and Dick
Crittenden Auction Co

SAT JULY 18 - 9:00 A.M.

PUBLIC AUCTION

At Callahan's Farm, 3 miles northwest
of Queen Anne (Rt. 404) on Route 309
toward Starr...signs posted from Queen
Anne, Md.

SATURDAY, JULY 25, 1981

At 11:00 A.M.

FARM MACHINERY

(2) International 856 Diesel Tractors, Int. H
Tractor, (2) Int. M Tractors, set of duals for
856, (2) Int. #550 plows, Int. 12' road disc, JD 14'
road disc, spring & spike tooth Harrows,
Brillion Cult-Mulcher, 15' crows foot
Cultpacker, Int. 4-row cultivators, JD 494 AN
Planter, JD #34 Forage Harvester w/2 heads,
JD #65 silo blower, JD 45 combine, 16' silo
unloader & pipe, JD Flail chopper, JD #3800
Harvester w/twin corn head, Int. #510 Grain
Drill 18 tyne, JD 350 Elevator, JD PTO
BARREL SPREADER, 3 Hay feed wagons,
post hole digger, Case heavy duty Loader, JD
rear mounted mower, (3) JD #125 chuck
wagons (Grove wagon), (2) scraper blades, (3)
Funnel grain wagons, flat wagon, hyd. dump
wagon, Rake, S.S. tank for water on wagon,
milk dumping station, etc...

TRUCKS:

'64 Ford Grain Dump, '78 Ford F600 grain
Dump, '68 Ford F750 Grain Dump, '58 GMC
dump, '73 Ford Pickup, '73 GMC 1 ton cattle
truck, '66 GMC 4000 CO Cattle Truck 20' metal
body, '63 truck tractor, old cattle trailer, '60
Plymouth sedan, old GMC 1 ton truck...

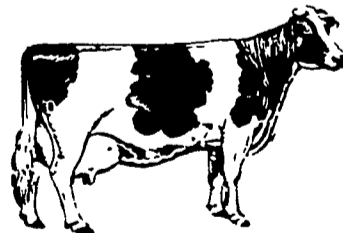
CALLAHAN FARMS, INC.

Queen Anne, Md.

Lunch Served

Harry Rudnick & Sons, Inc.

Phone 301-648-5601



NEW HOLLAND SALES STABLES SUMMER HOLSTEIN PROMOTIONAL SALE

Held at New Holland Sales Stables

New Holland, PA

FRIDAY, AUGUST 14 - 7:00 P.M.

125 HEAD REGISTERED HOLSTEIN

These animals will be consigned by our regular shippers and local breeders. Several good 1st calf heifers and few service age bulls. All animals 30 day tested for interstate shipment.

Catalogs night of sale.

Henry Kettering - pedigrees

For More Information Contact

Norman Kolb

717-397-5538

Abe Diffenbach

Office 717-354-4341