

# Huntingdon Co. DHIA

(Continued from Page D17)

Evergreen Farms No 3					
838	3	6-0	303	19,355	706
61	3	4-10	279	16,371	696
1045	3	4-6	294	19,915	690
973	3	5-7	279	15,372	663
455	3	9-7	305	14,549	617
Durbin Farms					
Rachel	3	6-7	305	23,259	804
Stacy	3	8-11	305	18,364	675
Sue	3	6-0	305	18,454	661
Radar	3	8-11	305	16,674	651
Gawk	3	4-2	305	17,424	641
Prunell	3	5-0	305	19,058	596
Gillbrook Farms (3 times/day)					
HS 296	3	7-4	305	19,216	809
JG1358	3	4-5	305	23,083	806
TV1324	3	6-6	305	17,601	733
TB1329	3	7-4	305	20,496	682
PV1384	3	4-0	257	17,442	657
CS 1364	3	2-1	277	17,257	594
ACC1402	3	6-7	295	17,435	547
Willard Yoder					
7	3	5-4	305	22,024	799
250	3	4-6	305	19,346	760
115	3	3-1	305	17,945	684
000	3	2-9	305	16,777	649
100	3	3-1	305	16,781	639
Harold A Moyer					
221	3	5-7	305	18,995	799
68	3	6-4	305	18,581	721
97	3	6-5	305	16,988	638
158	3	3-1	305	14,433	613
121	3	3-10	305	16,479	610
Roland G Yoder					
Edna	3	6-6	305	15,760	791
Rosie	3	2-10	305	14,559	628
Betty	3	2-6	305	13,865	605
Harry/John Keith					
Babe	3	4-3	305	19,887	769
Amy	3	4-7	305	14,434	608
Sangrey Bros					
4Sisy	3	5-1	304	21,034	756
135Daff	3	6-9	305	21,523	751
30Arin	3	4-8	305	18,253	744
139Bula	3	5-9	305	18,629	643
Edwin Steach					
Janice	3	6-5	300	19,632	752
Millie	3	6-7	305	20,379	675
Jean	3	3-10	305	15,287	605
Gwen	3	7-11	305	18,253	602
J Frederick Kyper					
Lady	3	7-7	305	18,004	748
Glenn M Smith					
Kathy	3	3-0	305	18,561	744
Bee	3	3-1	305	21,662	494
Gerald E McMath					
Lu	3	6-2	305	17,721	744

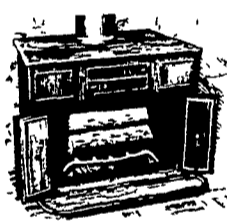
Torru	3	3-9	305	20,907	706
Doris	3	3-1	305	16,102	627
E James McMath					
Cora	3	6-10	305	21,446	743
Gay	3	5-7	305	16,017	641
Desie	3	7-9	305	17,309	586
Betty	3	5-7	305	17,851	582
Gibboney Farms					
Ruby	3	3-11	287	18,311	734
Tam	3	2-5	305	18,684	692
Howard/Nancy Wiggins					
86Becky	3	5-4	305	22,848	728
72Helen	3	5-2	305	17,080	690
4Hdssh	3	1-11	305	20,630	669
Behrer Farms					
44	3	4-5	305	19,390	724
211	3	3-1	305	15,531	699
85	3	1-10	301	19,656	679
25	3	6-6	305	17,380	660
88	3	5-1	305	15,995	615
48	3	4-3	301	15,662	608
226	3	2-0	305	17,792	600
Breezy Hollow Farm					
Golden	3	3-5	305	20,375	710
Virginia	3	3-0	305	19,821	625
John W Middaugh					
April	3	6-0	305	16,200	708
State Correctional					
302	3	3-11	305	19,580	701
209	3	6-4	305	15,491	681
333	3	2-9	305	17,382	663
5915	3	5-0	305	16,059	641
299	3	3-1	282	14,841	628
315	3	2-11	303	14,443	615
John S Kyper					
46	3	3-7	305	20,045	698
Locust Lane Farm					
O 55	3	4-9	305	21,062	696
Glenn Peachey					
Edna	3	4-7	305	17,788	689
Honey	3	3-2	279	10,867	490
Zoro	3	3-0	271	10,983	476
Fonda	3	4-2	263	12,704	473
Chester/Carole Smith					
42	3	6-4	305	16,828	678
45	3	5-3	304	19,030	672
A 8	3	4-10	305	17,727	648
Stu-Bon Farm					
012	3	5-1	305	15,906	661
Hawn Brothers					
Daisy	3	7-6	305	17,793	659
Eberle Brothers					
Melinda	3	5-1	305	20,552	656
Viola	3	3-3	297	18,803	628
Collen	3	3-5	305	18,124	612
Lakevue Farm					
Jerri	3	3-1	305	17,228	656
Dawn	3	6-5	305	17,523	609
Tearose	3	5-6	305	20,063	587
Lynn	8	3-2	305	17,107	486
Harold Book					
4	3	6-9	305	16,157	655
27	3	5-8	305	17,893	623

Jim/Kim Grove	3	5-11	305	17,627	637
29					
Paul D Powell	3	8-8	305	17,383	628
21					
Philip A Yohn	3	4-4	305	16,711	627
9314	3	5-8	305	17,786	603
9367	3				
James O Clark					
19	3	3-5	305	16,982	625
Geary E Shade					
P-IRIS	3	5-7	305	17,104	613
Tracy	3	8-9	305	21,786	589
Natalie	3	2-3	305	17,631	416
Gensimore Farms Inc					
53	3	10-1	305	15,558	608
88	3	8-8	305	18,442	588
E. Vance Thompson					
153	3	3-6	305	16,999	605
Blacklog Mountain Fm					
Dana	3	7-0	305	17,928	595
Joseph C Knarr					
58	3	3-10	291	13,524	575
108	3	3-3	305	15,201	487
72	3	2-7	305	13,724	421
Joseph H Hicks					
83	3	6-11	294	18,157	544

## Attend Grassland Congress

A Pennsylvania delegation attended the 14th International Grassland Congress, which was held last month on the University of Kentucky campus. A total of 1200 participated in the Congress program of technical reports and a forum of farmers who discussed their forage programs.

From the left, the Commonwealth delegation includes Fred Lepley and John Itle, Hoffman Seeds; Gladys and Joe Hartle, top producer in the 1980 Pa. Alfalfa Growers Program; Betty and Harold Gayman, 1981 president of the Pennsylvania Forage and Grassland Council.



**Hydro Heater, Conestoga & Baker Stoves Or Fireplace Inserts**

"Before You Buy... Give Us A Try"

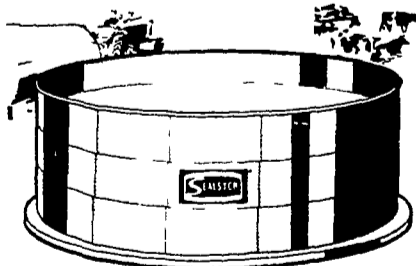
**J & A STOVES**

3752 East Newport Road, Gordonville, Pa. 17529  
ROUTE 772 1/2 MILE EAST OF INTERCOURSE  
717-768-8913



**PLANNING LIQUID MANURE STORAGE?**

We Will Custom Design Your System to Meet your Needs



Grain and Forage Structures Available For Immediate Erection

Please Clip & Mail Coupon to

**PENN DUTCH FARM SYSTEMS, INC.** LF 7/18  
1730 Highway 72 North Lebanon Pa 17042

I am interested in

High Moisture Corn Storage  Haylage or Corn Silage Storage

Liquid Manure Storage  Replacing my old or broken bottom unloader with the Ladig

Please add my name to your mailing list

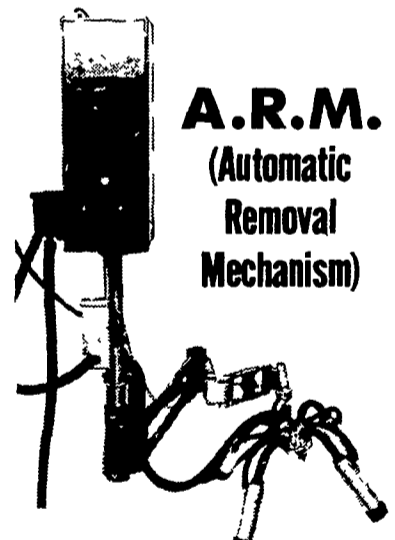
NAME \_\_\_\_\_  
ADDRESS \_\_\_\_\_  
CITY \_\_\_\_\_ STATE \_\_\_\_\_ ZIP \_\_\_\_\_  
TELEPHONE (include area code) \_\_\_\_\_  
NO. OF BEEF \_\_\_\_\_ DAIRY \_\_\_\_\_ HOGS \_\_\_\_\_



## Dairy Automation

The ultimate goals of automation in dairy equipment have always been simplicity, efficiency and labor savings at a cost that would be easy to justify. With DeLaval you can have full automation at a cost you'll find perfectly affordable.

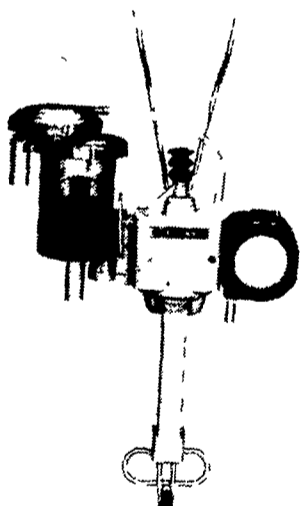
If you're a dairyman who'd like to save time and labor in your milking routine, DeLaval is sure to have what's right for you. Ask your DeLaval Dealer to show you how DeLaval Automation can save you labor, time and money.



**A.R.M.**  
(Automatic Removal Mechanism)

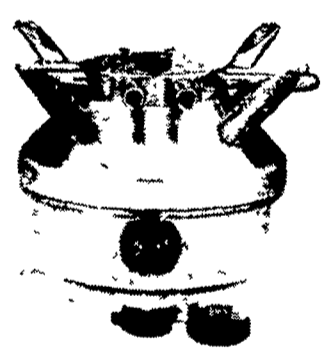
AVAILABLE IN TWO VERSIONS - With Parallel Linkage or Without

- Accurate milk flow sensing
- Positive Vacuum shut off
- Solid state circuitry
- Easy to use



**THE DV 300 MILKER UNIT**

- Accurate sensing of milk flow
- True flotation parallel linkage
- Positive vacuum shut-off
- Prompt removal and retraction
- Attaches easily to high & low udders
- Adapts to high curbs



**SUPER FLO-VU™ CLAW**  
High Capacity Milker Claw

- Larger Volume
- Larger milk inlets and outlets
- Improved automatic shut-off
- Wider nipple spread
- Improved air valve design
- Larger air nipples
- Improved thread design
- New rubber bumper
- Manual lock feature
- Clear visibility

**We Sell and Install Parlors and Pipelines**

**SERVICE WHEN YOU NEED IT**

- Trained Installation and Service Personnel
- Planning Service ■ Competitive Price
- Hundreds of Satisfied Users
- Route Truck to Supply Your Needs

### J.B. ZIMMERMAN & SONS

West of Blue Ball, PA on Rt. 23  
PH: 717-354-4355  
Ask For Ralph Stoltzfus  
RADIO DISPATCHED TRUCKS

### CECIL DAIRY SERVICE

RD 1, Rt. 274  
1/2 Mile South of Rising Sun, Md. 21911  
PH: 301-658-6923