

Bradford Co. DHIA

(Continued from Page D4)

Matt Will					
Joan Jr	9	7	305	20,578	812
Sharon	9	6	299	18,648	751
Mary	9	7	305	18,732	804
Peanut	9	5	305	19,083	787
Arthur D Wolf					
5	3	8	305	17,773	745
42	3	4	305	19,355	785
Allen S Andrews					
Corrie	3	5	305	21,324	725
James A Van Blarcom					
Kathy	3	5	305	14,960	714
Big	3	3	305	19,627	761
Roy Watson Farm 3					
Heidi	3	4	305	18,263	785
Leona Holsteins					
Burke	3	5	305	15,328	755
Kenneth Walters & Sons					
56	3	3	305	18,389	750
Robert W Cory					
5	3	6	305	17,162	781
Hopps Hill Farm					
48	3	6	305	17,136	719
Whity	3	6	305	18,100	762
Earl J Gamble					
Julie	3	2	280	14,395	651
Ronald P Davis					
Luci	3	5	305	20,985	822
Beth	3	4	305	21,045	864
Willard Fassett					
112	3	3	305	19,064	796
Wilford Heater					
42	3	7	305	19,884	700
Ponder Hill Farms					
Spot	3	4	305	19,320	852
Hugh & Russell Andrus					
46	3	6	305	20,273	769
Donald Jennings Sr					
16	3	4	304	19,938	796
08	3	3	283	16,723	864
Snowcrest Farm					
Alison	3	7	305	20,619	786
Kendall Strawn					
Paula	3	6	305	16,226	737
Lewis & Lois Alderson					
Jackie	3	6	305	24,516	983
Sparky	3	3	305	19,187	766
Dark	3	2	305	17,882	688

Lancaster Farming, Saturday, July 18, 1981—D15

W and R VanBlarcom					
87	3	2	305	20,245	734
Gerald W Twigg					
111	3	5	305	17,377	705
66	3	0	305	17,877	873
123	3	2	305	17,835	608
110	3	2	305	14,860	653
Bill & Donna Earls					
Dandy	3	8	305	22,677	724
Manleyview Farms					
Irene	3	2	304	18,770	610
Walter G Wheaton					
46	3	1	305	11,554	428
Harold Warner & Sons					
Knoll	3	5	305	16,888	702
Warren J Roberts					
Barb	3	2	305	15,966	706
Bruce A. Andrien Sr					
Stacie	4	5	305	14,376	714
Calvin Watson Fm					
Babs	4	7	305	13,487	720
Blonde	4	4	305	13,541	744
Delhi	4	3	297	13,448	775
Molly	4	2	305	12,926	733

(Turn to Page D6)

Split rate financing

10%

A.P.R. finance charges for the first 11 months

15%

A.P.R. finance charges for the balance of your contract

... on purchase of any new Case farm tractor

With Case split rate financing, an Annual Percentage Rate (A.P.R.) of 10% will be applied for the first eleven months of the contract. On the remainder of the contract, the A.P.R. will be 15%. Purchase must be financed through J I Case Credit Corporation.

Example of 10%/15% A.P.R. split rate financing on purchase of new Case farm tractor:

Cash price of tractor	\$47 500 00*
Down payment — cash and or trade in	14 250 00
Amount financed	\$33 250 00
Number of payments	three
Payment at 8th month	\$12 952 21
Payment at 20th month	13 674 43
Payment at 32nd month	13 674 43
Total of payments	\$40 301 07
Finance charge — \$7 051 07	
*Sales tax as applicable	
Insurance charges not included	

In this example the composite ANNUAL PERCENTAGE RATE for the length of the contract is 12.40%

or Waiver of finance charges

If you buy any of our new Case farm tractors or a used farm tractor of any make . . . and finance it through J I Case Credit Corporation . . . finance charges will be waived from date of purchase until January 1, 1982.

or \$600 rebate

on purchase of any of our new Case 1190, 1290, 1390, 1490 or 1690 General Purpose tractors Case will send you a check for \$600 or you can apply the amount to your down payment on a contract at normal rates NOTE Government Agencies/Departments do not qualify for rebate.

Offers valid July 1, 1981 thru August 31, 1981.

• PARTS • SERVICE • RECONDITIONED TRACTORS
• CONVENIENT FINANCING • LEASING • RENTALS

C. H. WALTZ SONS, INC.
RD1, Cogan Station, PA
(717) 435-2921

PAUL SHOVER'S, INC.
35 East Willow St
Carlisle, PA
(717) 243-2686

ZIMMERMAN'S FARM SERVICE
Bethel, PA
(717) 933-4114

C. & P. FULTZ EQUIP.
RD 1,
Spring Mills, PA
(814) 422-8805

T & T SUPPLY, INC.
RD5, Danville, PA
(717) 275-0927
2 mi. S. off Rte. 54

E. W. BILEWICZ EQUIP., INC.
Elmer Rd., Richwood, NJ
(609) 881-2692

A. L. HERR & BRO.
312 Park Ave.
Quarryville, PA
(717) 786-3521

STOFFER BROS., INC.
1066 Lincoln Way West
Chambersburg, PA
(717) 263-8424

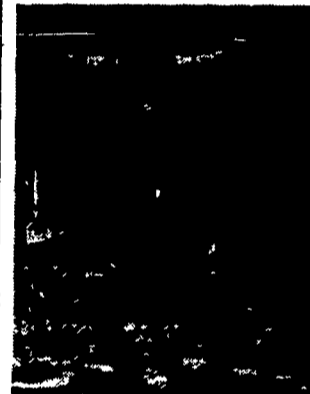
PEOPLES SALES & SERVICE
Oakland Mills, PA
(717) 463-2735

BINKLEY & HURST BROS.
133 Rothsville Station Rd
Lritz, PA
(717) 626-4705



WORRIED ABOUT FUELISH HEATING BILLS??

SURDIAC Coal Burning Stoves
will comfortably heat your
entire home for approximately
\$150 - \$250 per heating season!!



This stove
remains
unexcelled in:

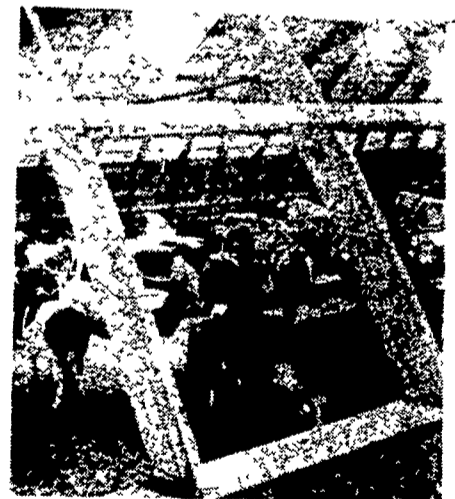
- ★ BEAUTY
- ★ QUALITY
- ★ PERFORMANCE
- ★ MINIMAL CARE & MAINTENANCE
- ★ EFFICIENCY

ELMER L. STOLTZFUS

171 QUARRY ROAD, LEOLA, PA 17540
PH: 717-656-9041

FREE STALL HOUSING

When a very
satisfactory
day-to-day
operation
is a must . . .



With Free Stall Housing modernization Laminated Rafters are the preferred choice Sunlight and proper ventilation without fans combine to provide a desirable working environment, heat and light for winter months and a healthier place for animals And a lot more space for the money

Structural
Imagination
for
Today's Farming

