

Livestock market and auction news

Slaughter Cattle Sale

Fredericksburg, Va.
Thursday, July 9

Report supplied by VDA

There were 57 head sold. All cattle were graded by Representatives of the VDACS's Division of Markets, Livestock Section on USDA standards and sold by the hundredweight.

Choice Steers 2-3 900-1050 lbs. 61.50-63.25; 1050-1250 lbs. 60.25-63.90.

Good Steers 2-3 1000-1200 lbs. 55.00-59.75.

Choice Heifers 2-3 800-900 lbs. 57.00-58.60; 900-1000 lbs. 59.00.

Slaughter Cattle Sale

Harrisonburg, Va.
Thursday, July 9

Report supplied by VDA

There were 220 head sold. All cattle were graded by Representatives of the VDACS's Division of Markets, Livestock Section on USDA standards and sold by the hundredweight.

Steers: Choice 2-3 1000-1350 lbs.

63.25-67.50; Singles 2-3 62.00-64.50; Good 2-3 950-1150 lbs. 61.20-64.75; Singles 2-3 57.00-63.00; Good Holstein Steers 1050-1350 lbs. 54.50-59.00; Choice Heifers 2-3 550-1050 lbs. 60.00-65.20; Good 2-3 730-950 lbs. 53.50-58.75.

Omaha Cattle

Thursday, July 16

Report supplied by USDA

Through midweek slaughter steers 1.25-1.50 lower. Heifers 50-1.00 lower. Cows 2.50-3.50 lower. Bulls steady.

Four Day Receipts 10,262, last week, 9,891, year ago 12,922.

Steers made up 46 pct. of week's receipts, heifers 32 pct., cows 11 pct. In spite of modest salable numbers, slaughter steer and heifer prices trended lower for the third consecutive week, as dressed trade continued in a depressed state. Buyers very selective for kind, concentrating best demand on choice steers and heifers weighing over 1100 lbs. and 950 lbs. respectively. Supply of cattle scaling under afore mentioned weights again quite large and in many cases these kinds subjected

to broad discounts. The sharp increases in cow prices of a week ago were completely erased as demand turned very narrow at midweek.

STEERS Earlier in week four loads Choice 2-4 1150-1300 lbs. 70.00. At midweek, Choice 2-4 1100-1300 lbs. 67.50-68.50, two loads 68.75. Two loads Choice 3-4 1225 lbs. 67.00. Mixed Good and Choice 2-3 1050-1250 lbs. 66.50-67.50. Good 64.00-67.00, some 950-1000 lbs. to 62.50. Few Mixed Good and Choice 2-3 and Good 1250-1400 lbs. holsteins 58.50-60.00.

HEIFERS: Earlier in week part load Choice 2-3 1100 lbs. 67.50 at midweek load Choice, mostly 3 950 lbs. 66.50. Choice 2-4 925-1050 lbs. 65.00-66.00. Mixed Good and Choice 2-3 900-1025 lbs. 64.00-65.00. Good 61.00-64.00.

Average of LS-214 detailed quotations for Choice 900-1100 lbs. steers 67.65, 1200-1300 lbs. 68.68. average cost steers this week 67.41, average weight 1129 lbs., as compared 68.47 and 1138 lbs. a week ago. Average cost heifers this week 65.77, average weight 971 lbs. as compared 65.93 and 974 lbs. a week ago.

COWS: High cutter, Utility and Commercial 1-3 41.50-42.00, few 42.50-43.00. Canner and Cutter 39.00-41.50.

BULLS: 1-2 few 1100-1400 lbs. 50.00-52.00.

St. Louis Cattle

Thursday, July 16

Report supplied by USDA

Receipts this week: 3,600
Week Ago: 4,200
Year Ago: 5,600

As compared to last week's close, slaughter steers 1.00-1.50 lower. Slaughter heifers mostly .50, instances 1.00 lower. Cows 3.00-4.00 lower, few bulls steady. Slaughter supply mainly Choice and Choice and Prime 2-4 1050-1200 lbs. steers with several lots of Choice steers under 1050 lbs. and Choice heifers under 850 lbs.; around 35% heifers and 10% cows.

SLAUGHTER STEERS: Mixed Choice and Prime 2-4 1050-1250 lbs. 68.50-69.50 early, limited closing sales 1050-1175 lbs. 67.50. Choice 2-4 1000-1250 lbs. 66.00-68.50, closing 66.00-67.00; 950-1000 lbs. 63.75-65.50; 900-950 lbs. 60.00-62.00. Mixed Good and Choice 2-4 900-1200 lbs. 65.00-67.50, closing 65.00-66.50. Good 2-3 900-1150 lbs. 62.00-66.00. Mostly Good 1-2 1075-1365 lbs. holsteins 54.25-60.00, most closing sales 55.00-59.00. Few Standard 2-3 1100-1510 lbs. 52.00-53.00.

SLAUGHTER HEIFERS: Mixed Choice and Prime 2-4 875-1050 lbs. 64.00-65.00, package early at 65.50, most closing sales 64.00. Choice 2-4 850-1050 lbs. 63.00-65.00, closing 63.00-64.00, 750-850 lbs. 55.00-60.00. Mixed Good and Choice 2-3 700-975 lbs. 61.00-63.50. Good 2-3 700-950 lbs. 57.00-62.00.

COWS: Closing Week Sales Utility and Commercial 2-4 39.00-42.00. Boning Utility 1-2 42.00-43.00. Cutter 1-2 39.00-41.00. Canner and Low Cutter 1-2 35.00-39.00.

BULLS: Yield Grade 1-2 1050-1800 lbs. 50.00-55.00. Individual Yield Grade 1 56.00.

FEEDERS: (Including around 600 at the regular Thursday auction.) Light supply feeder steers weak to 2.00 lower, but not enough of any grade or weight for a full test of prices. Feeder heifers weak to 2.00 lower, except 600-650 lbs. 1.00-2.00 higher.

FEEDER STEERS: Medium Frame 1: Scattered lots 440-500 lbs. 64.00-66.25; few lots 620-650 lbs. 61.50-63.75; lot fleshy 880 lbs. 59.25. Medium Frame 1-2: Scattered lots 400-600 lbs. 58.50-59.25. Large Frame 2 Holsteins: Lot 650 lbs. 52.00.

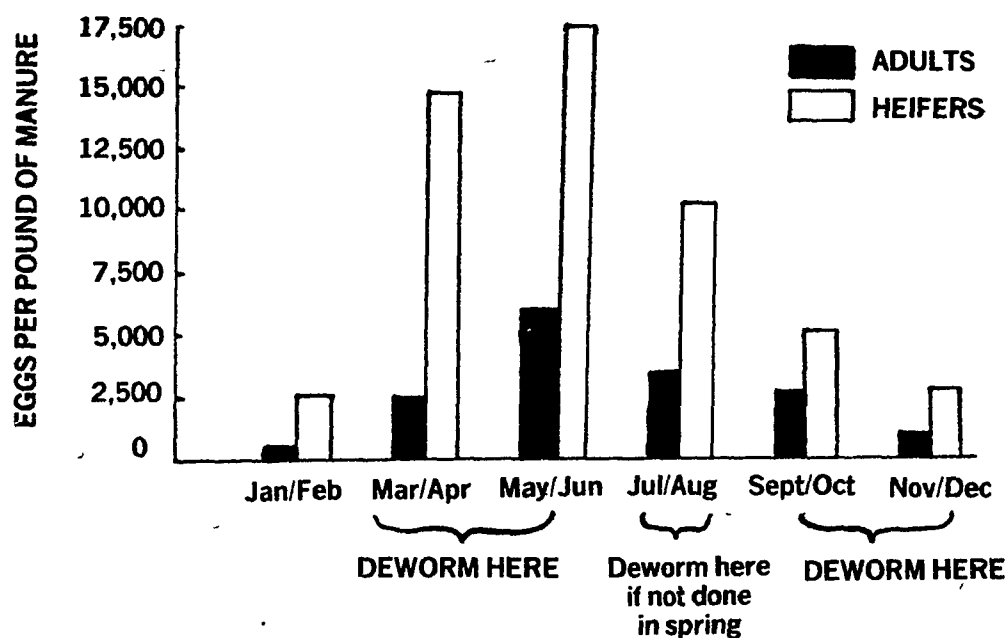
FEEDER HEIFERS: Medium Frame 1: 425-600 lbs. 55.50-59.00; 600-650 lbs. 60.25-61.50. Medium Frame 1-2: 375-575 lbs. 53.75-56.75.

Dairy Farmers - Deworm Now "STRESS"

You've heard a lot about stress, 2 sources of mid-summer stress; heat and worms. One can be avoided, the other only modified. Parasite burdens can be avoided; heat stress can only be modified. The chart below illustrates heavy burdens during mid-summer resulting from heavy egg deposition in the spring.

SPRING RISE OF EGG PRODUCTION

1974 - T.A. Yaswinski, M.S. and H.C. Gibbs, DVM, Ph.D.
Journal Veterinary Research Nov. 1975



If your herd was not dewormed in the spring, a parasite burden can be avoided during mid-summer by whole herd deworming with

BAYMIX®

BAYMIX IS AVAILABLE AT YOUR LOCAL



New Holland Supply Company
DEALER

Short & Intermediate Term Farm Loans...



BROWNSTOWN AGRI LOAN CORP.

(Subsidiary of The Brownstown National Bank)

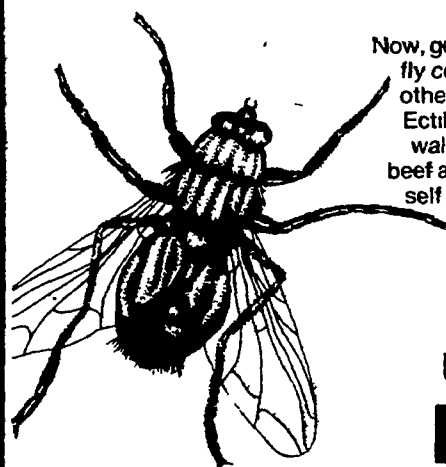
ROBERT N. ZOOK
President

Main & State Sts.
Brownstown, Pa.
17508
717-656-2951

Serving
Lancaster
And Lebanon
Counties

Finally...

a fly control that acts fast and lasts a long time!



Now, get powerful, fast-acting, long-lasting fly control—house flies, stable flies and other manure-breeding flies—with new Ectiban® insecticide. Spray Ectiban on walls and ceilings of dairy, horse, hog, beef and poultry buildings. See for yourself how fast it works, how long it lasts.

See us now for **Ectiban®** insecticide

Available at your local Agway store or representative

