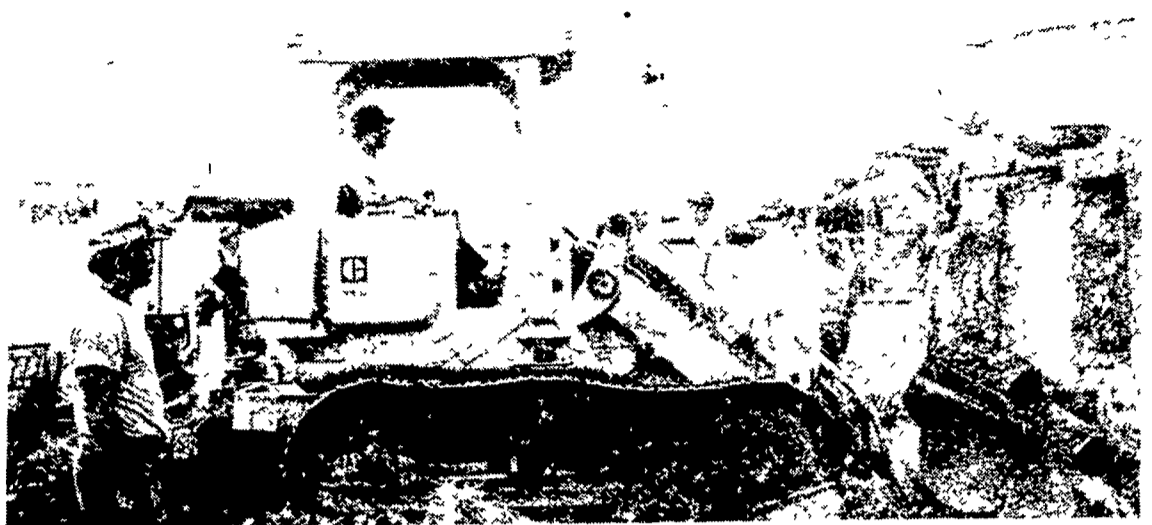


## Friends, neighbors clean up Sauder barn fire debris



Charred window and foundation stone frame the activities of a few of the volunteers who aided in removing remains of barn destroyed by fire on the Sauder farm.



"You never know how many friends you have until something like this happens. Without them, I wouldn't even have attempted to start."

With these words, Norman Sauder, of near East Petersburg, Lancaster County, paid

tribute to the more than 100 friends, neighbors and relatives who gathered Monday to clean up the debris from last week's barn fire.

In above photo, Sauder, at left, observes clean-up scene.

**MADISON<sup>®</sup> SILOS**

*Your best silo buy!*

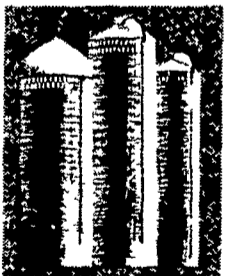
**The secret is the Vibra-Cor<sup>®</sup> Stave.**

Unique truss-beam design of the exclusive Madison Vibra-Cor Stave makes it the strongest in the industry

Add to that Madison's new wide door and Kleen Chute to match Madison's rattle-free, wind resistant roof Madison's full-measure" hooping Madison's attractive light gray stave color plus extra care in construction by Madison's own factory branch crews, and you have the highest quality silo it's possible to build

Is it any wonder that one out of every four silos sold in America is a Madison?

**MADISON "System of Choice"**



gives you the logical structure for every feed you grow Madison Silos for corn silage Madison Nutri-Matic<sup>®</sup> and Grain-O-Matic<sup>®</sup> for medium moisture haylage and high moisture grain Saves you money because there's no need to over-structure



**CHROMALLOY DIVISION** Making things better for you.

**FREE—MADISON "FACT FINDING" TOURS**

See for yourself how local farmers are producing more milk and meat with Madison structures. FREE one-day tours from January through March, 1981. Call or write your nearby Chromalloy Farm Systems—Madison Silos branch for tour dates and full details.

Chromalloy Farm Systems, Inc.—Madison Silos

**EPHRATA BRANCH**  
1070 Steinmetz Rd., Ephrata PA 17522  
(717) 733-1206

**STEINER**

4x4 18 HP -  
UTILITY TRACTOR

**Attachments:**

- 48" & 60" Mower Deck
- 48" Dozer Blade
- 48" Snowblower
- 3 Point Lift (Category "O")

**SPECIAL CLEARANCE ON 1980 MODELS FARMERS!**

The ideal tractor to mow, scrape manure in alleyways, freestalls, hog or chicken houses and grading.

**WES STAUFFER SALES & SERVICE**  
RD 3 Ephrata, PA PH: 717-738-4215  
Ephrata Exit New Rt 222, 1/2 mile West on Rt 322, Turn Left onto Pleasant Valley Road

**FANTASTIC REBATES**

**REMEMBER...BUYING NOW IS SPENDING TO SAVE!**

**ALLEN H. MATZ, INC.**  
505 E. Main St., New Holland  
Ph: 717-354-2214  
SERVING THE COMMUNITY THIRTY ONE YEARS  
LANC CO'S OLDEST FORD DEALER

**Peabody Galion**

**LIFTGATES**  
All the way from an 800-pound pickup model through a 6000-pound model for trailer application with plans to add to and refine the line, including a 1500 pound fold under model

**CONVERSION HOISTS**  
A selection that's second to none in the industry. There's literally a model to fit any size truck from a 1/2-ton pickup through a 24-foot grain body

**PACKAGES**  
A great idea having a certain body and a certain hoist application engineered to a certain job and ready to go. Right now sizes range from an 8-foot/2 yard unit to a 17-foot/15 yard unit. 15 brace side packages in single, tandem, and tri axle models plus 2 unique curved side packages

**lancaster truck bodies**  
lancaster automobile spring co., inc.

Dial Toll Free: 800 732-0004  
310 Richardson Drive  
Lancaster Hempfield Industrial Park  
P O Box 4626, Lancaster, PA 17604  
717 394-2647