

Livestock market and auction news

Central U.S. Carlot

Wednesday, July 8

Report supplied by USDA

Compared to Tuesday's 4:00 report: Choice 3 steer beef 2.00-4.00 lower, late. Choice 3 heifer beef steady to mostly 1.00 lower. Good, both classes, steady to 2.00 lower. Demand and trading light, turning very light after noon, especially on Choice steer beef. Sales reported on 82 loads of steer and heifer beef.

STEER BEEF

58½ Loads

FOB Omaha Basis

Choice 3: 600-700 lbs. 106.00-108.00, late 106-107.00, 3.00-4.00 lower.

Choice 3: 700-900 lbs. 107.00-108.00, 2.00-3.00 lower.

Choice 4: 600-900 lbs. 99.00-100.00.

Good 2-3: 600-900 lbs. 101.00, generally steady to 2.00 lower.

Choice 2-3: 600-900 lbs. 100.00 (Hols.) steady.

Good 2-3: 600-90 lbs. 96.00 (Hols.) steady.

FOB Amarillo Basis

Choice 3: 600-700 lbs. 107.50-108.50.

Choice 2: 600-700 lbs. 108.50-109.50.

HEIFER BEEF

23½ Loads

FOB Omaha Basis

Choice 3: 500-700 lbs. 104.00, 1.00 lower.

Choice 3: 550-700 lbs. 105.00, steady-1.00 lower.

Choice 4: 500-700 lbs. 99.00.

Good 2-3: 550-700 lbs. 98.00, steady to 2.00 lower.

Cow beef not tested, but undertone firm.

PRIMAL BEEF CUTS

4 Loads

FOB Omaha Basis

HINDS (H): 120-170 lbs. 125.00-125.00.

FORES: 130-210 lbs. 86.00.

BONELESS PROCESSING BEEF/BEEF TRIMMINGS

64 Loads

FOB Omaha Basis

75% chem lean, fresh 94.00-95.00.

65% chem lean, fresh 81.50-83.00.

50% chem lean, fresh 58.00-59.50.

92% chem lean, fresh 126.00 bull.

Compared to Tuesday's 2:15 report: Fresh pork loins not fully established, 14-17 lbs. late 3.00-6.00 lower than Monday.

14-17 lbs. 1.50-2.25 lower, 20-26 lbs. steady to 1.00 lower. Sdls bellies steady to 2.00 higher.

Sales reported on 16 loads of pork cuts and 11 loads of trimmings and variety meats.

FRESH PORK CUTS

LOINS: 14-17 lbs. 108.00, load early 116.00, uneven, late 3-6.00 lower than Monday; 17-20 lbs. 105.50-106.25; 20/up lbs. 83.00, 83.75 clear channel.

SPARERIBS: 3-5 lbs. 103.50-104.00 frozen.

SKINNED HAMS: 14-17 lbs. 80.50 frozen T.I.S.; 14-17 lbs. 79.00-79.75, 1.50-2.25 lower; 17-20 lbs. no sales reported; 20-26 lbs. 82.00-83.00, late 82.00, stdy-1.00 lower; 26-30 lbs. 78.50; 26/up lbs. 78.00-79.00.

BELLIES, SDLS: 12-14 lbs. 53.00-55.00, stdy-2.00 higher; 14-16 lbs. 53.00, steady; 16-18 lbs. 51.00-52.00; 18-20 lbs. 45.00; 20-25 lbs. 42.00; 20-25 lbs. 41.50 frozen.

VARIETY MEATS

TAILS: 20.75.

FEET, FRONT, TOES ON: 15.00-16.00.

NECKBONES: 18.00.

SELECT GELATIN SKINS:

21.50 Domestic, 24.00 Export.

PORK TRIMMINGS/ BONELESS PROCESSING (Chemical Lean)

72% bnl picnics fresh 92.50.

Western Maryland Livestock

Westminster, Md.

Tuesday, July 7

Report supplied by auction

BUTCHER COWS: Good run, steady prices. High Yield 46.50-47.85; Standard & Utility 43.50-46.50; Cannors 39.00-43.00; Shelly 42.00 Down. Bulls Few Good 1400-1600 lbs. 52.00-55.85. Steers Standard to Good Holsteins 1000-1350 lbs. 51.00-54.00. Heifers Few offered Medium 50.00-52.75.

BUTCHER HOGS: Good demand on all classes! US #1&2 215-260 lbs. 51.50-52.10; US 1&3 200-260 lbs. 50.00-51.25; 275-325 lbs. 42.00-47.50. SOWS: Good demand, US 1-3 350-500 lbs. 45.00-50.00. BOARS 400-600 lbs. 40.25-40.35.

VEAL CALVES: Good & Choice 73.00-83.00; Standard & Good 60.00-75.00; Stocky & Thin 45.00-60.00; Killers 80-100 lbs. 55.00-64.00; Weak & Rough 55.00 Down.

CALVES RETURNED TO FARM: Bull Calves \$20 lower. Holstein Heifers 95-115 lbs. 100.00-125.00; Holstein Bulls 95-115 lbs. 68.00-90.00; Mainly 74.00-82.00; Beef Type 70-100 lbs. 65.00-80.00; Stock Cattle Good run, demand weak. Steers Good & Choice 300-500 lbs. 58.00-68.00; Holsteins 53.00-58.00; Good & Choice 550-800 lbs. 56.00-64.00. Heifers Choice 300-500 lbs. few 54.00-57.50; Good 47.00-

53.00; Good 500-700 lbs. 44.00-51.50.

Bulls Good & Choice 300-500 lbs. 55.00-62.00; Good & Choice 500-700 lbs. 49.00-57.25.

PIGS AND SHOATS: Active bidding, prices higher! By the Head 25-60 lbs. 20.00-35.00; 60-80 lbs. 35.00-40.00; By the Lb. 80-100 lbs. 48.50-54.00; Few 120-150 lbs. 40.00-42.50.

LAMBS: Good run. Good & Choice 90-115 lbs. 60.50-67.00; Good & Choice 80-90 lbs. 54.00-59.50; Good & Choice 65-80 lbs. 52.00-56.50; Feeders, one lot 53 lbs: at 48.50; Yearlings 80-110 lbs. (plain) 32.00-36.00; Mature Sheep 13.00-21.00.

New Wilmington Auction

Monday, July 6

Report supplied by PDA

CATTLE 232. Compared with last Monday's market, slaughter cows fully \$1 higher. Few High Choice & Prime slaughter steers 67.50-69.00, Choice 63.50-66.00, Good 57.00-63.00, Standard 49.50-56.75. Standard slaughter heifers 47.00-51.50. Utility & Commercial slaughter cows 46.00-48.75, few 50.00-51.50. Cutters 44.00-47.00, Canner & Low Cutter 36.00-44.00, Shells down: to 20.00. Yield Grade #1 1125-2190 lbs. slaughter bulls 52.00-60.00, few yield grade #2 1020-1350 lbs. 42.75-48.75. Large Frame #2 550-800 lbs. feeder steers 43.00-45.25.

CALVES 238. Vealers grading Good & Choice fully \$5 higher, Standard steady. Choice vealers 86.00-95.00, Good 70.00-88.00, Standard 55.00-70.00, Standard & Good 90-120 lbs. 45.00-60.00, 65-85 lbs. 35.00-45.00, Utility 50-70 lbs. 30.00. Farm calves, holstein bulls 95-130 lbs. 80.00-107.00, holstein heifers 75-125 lbs. 90.00-125.00.

HOGS 666. Barrows & gilts about steady. US No. 1-2 210-245 lbs. barrows & gilts 51.00-52.00, No. 1-3 200-250 lbs. 49.50-51.00, No. 2-3 200-270 lbs. 46.25-49.60, No. 1-3 160-195 lbs. 41.00-45.00. Sows mostly \$1 lower. US No. 1-3 250-640 lbs. sows 40.00-46.25, No. 2-3 350-550 lbs. 37.00-40.00. Boars 28.00-43.00.

FEEDER PIGS 66. US No. 1-3 25-35 lbs. feeder pigs 20.00-27.00 per head.

SHEEP 165. Choice 55-85 lbs. spring slaughter lambs 75.00-84.00,

90-120 lbs. 65.00-70.00, good 60-95 lbs. 55.00-70.00, 25-50 lbs. 40.00-58.00. Slaughter ewes 10.00-27.00.

Middleburg Livestock Auction

Middleburg, Pa.

Tuesday, July 7

Report supplied by PDA

CATTLE 349. Compared with last Tuesday's market, slaughter steers about steady. Slaughter cows \$1 lower. High Choice & Prime slaughter steers 67.85-70.50, Choice No. 2-4 1000-1350 lbs. 65.00-68.85, Good 58.50-64.50, Standard 54.00-59.00. Few Choice slaughter heifers 59.00-65.00, Good 51.00-58.50. Utility & Commercial slaughter cows 44.85-48.25, couple to 48.85, Cutters 41.75-45.00, Canner & Low Cutter 39.00-41.75, Shells down to 35.00. Few Choice slaughter bullocks 59.25-65.60, few Good 53.25-57.75. Yield Grade #1 1125-2230 lbs. slaughter bulls 53.60-60.00. Few Large Frame #1 and #2 425-550 lbs. feeder steers 58.00-67.00.

CALVES 194. Choice vealers 82.00-90.00, Good 67.00-79.00, Standard & Good 70-90 lbs. 53.00-63.00, Utility 40-80 lbs. 45.00-52.00. Farm calves, holstein bulls 85-125 lbs. 72.00-92.00, few to 100.00; holstein heifers 80-120 lbs. 75.00-165.00.

HOGS 525. (Monday, July 6, 1981). Barrows & gilts 25 cents to 50 cents higher. US No. 1-2 210-235 lbs. barrows & gilts 54.50-56.00, No. 1-3 190-250 lbs. 53.50-54.50, No. 2-3 190-270 lbs. 50.00-53.50. US No. 1-3 300-600 lbs. sows 47.50-51.00, No. 2-3 250-500 lbs. 35.75-46.75. Boars 39.25-43.50. (TUESDAY 103 HEAD).

Few lots US No. 1-3 200-230 lbs. barrows & gilts 52.00-53.00.

FEEDER PIGS 282. US No. 1-3 10-20 lbs. feeder pigs 10.00-20.00 per head, No. 1-3 20-35 lbs. 20.00-28.00, No. 1-3 35-50 lbs. 26.00-40.00, No. 1-3 50-60 lbs. 38.00-43.00 per head.

SHEEP 14. Few Good 65-75 lbs. spring slaughter lambs 58.50-65.00. Few Slaughter ewes 17.50-22.00.



**NOW
OPEN
TO RECEIVE
YOUR
MARKET
HOGS**

EMERY'S BUYING STATION

Formerly Penn Packing Buying Station

AT THE GREEN DRAGON MARKET

RD 4, EPHRATA, PA 17522

1 MILE NORTH OF EPHRATA

ON NORTH STATE STREET.

NEW HOURS

MONDAY, TUESDAY, and WEDNESDAY

6:00 A.M. to 11:30 A.M.

CALL FOR FIRM
MARKET QUOTES
717-733-9648
Res: 215-458-5223

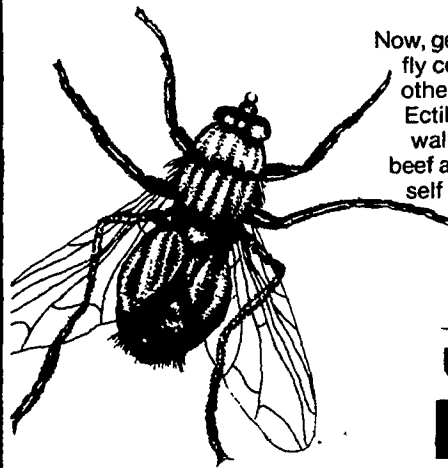
KNOW WHAT YOU ARE
GOING TO GET FOR
YOUR HOGS BEFORE
THEY LEAVE
YOUR FARM.

Ken & Lois Emery, Proprietors



Finally...

a fly control that acts fast and lasts a long time!



Now, get powerful, fast-acting, long-lasting fly control—house flies, stable flies and other manure-breeding flies—with new Ectiban® insecticide. Spray Ectiban on walls and ceilings of dairy, horse, hog, beef and poultry buildings. See for yourself how fast it works, how long it lasts.

See us now for **Ectiban®** insecticide

Available at your local

Agway store or representative



END O' RAT



KILLS RATS and MICE

End O' Rat Co.

Rd 1 Box 668

New Holland, PA

17557

717-354-2340

Wing It

We have Red Wing 6" and 8" boots to fit



2126

Sizes 6-13

B-EEEE Not all sizes in all widths.

You've earned your Wings!

Red Wings

BOOKS

SHOE SERVICE

107 E. STATE ST.

QUARRYVILLE, PA

17566

717-786-2795

CLOSED WEDNESDAYS