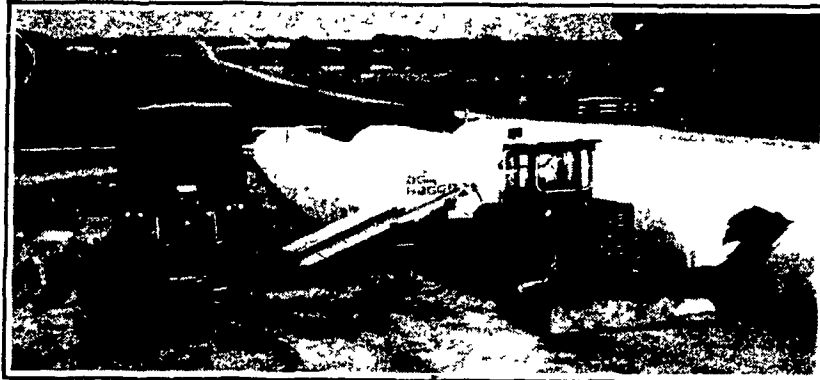


**TOTAL MANAGEMENT
MAKES THE
DIFFERENCE!**

The AG-BAG Sealed Storage System works with you as part of the total management program which can cut feed costs...improve nutrition...and increase your production and profits.

AG-BAG THE AFFORDABLE SYSTEM



DESIGNED FOR THE 80's

The Revolutionary AG-BAG System gives you unlimited sealed storage capacity for... High Moisture Grain... Silage... Haylage.

**CUSTOM BAGGING
AVAILABLE
CALL COLLECT
717-627-3665**

I want to know more about the Ag-Bag System

Mail To: **AMERICAN AG-BAG INC.**
50 E. 28th Division Highway
Lititz, Pa. 17543

NAME _____
ADDRESS _____
CITY _____
STATE _____ ZIP _____
PHONE _____



**AMERICAN AG-BAG INC.
FORAGE SYSTEMS**

50 E. 28th Division Highway
Lititz, Pa. 17543 Rt. 322 & 501 in Brickerville
Lancaster County, 717-627-3665

Exclusive Dealer For Pennsylvania, New Jersey, Maryland, Delaware, Virginia, West Virginia Note: We Need Part Time & Full Time Salesmen for These Areas

FEATURES

- ALL HYDRAULIC OPERATION
- SELF POWERED UNITS AVAILABLE
- EASILY TRANSPORTABLE

Leasing & Bank Financing Available

Field Queen Forage Harvesters **SALES, SERVICE & PARTS** Hesston Farm Equipment

PARTS SMART

WILL SHIP SAME DAY VIA UPS - PPSH - BUS - AIR FREIGHT - ETC.

PARTS VALUE OF THE MONTH



Here's a great opportunity to protect your pocketbook, while you protect your engines, hydraulics, and power trains. We've bought big quantities of high-quality lubricants and we're passing the savings on to you.

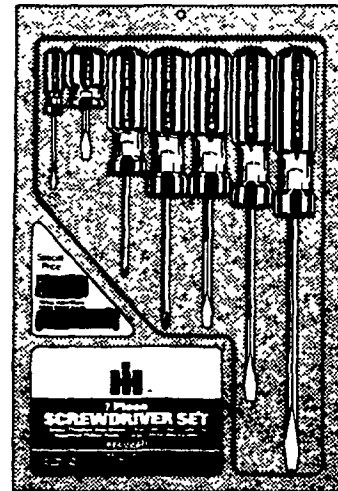
Save 20% off regular IH suggested list prices on these specially formulated products in 5-qt., 5-gal., and 55-gal. quantities:

- IH No. 1^o Engine Oil — for high-performance, high-temperature 4-cycle diesel engines.
- IH Low Ash Engine Oil — keeps down harmful deposits in gasoline, LPG, and 2-cycle diesel engines
- IH InterSeason Oil — quality 10W-40 multi-grade oil for cars and trucks
- International^o Hy-Tran^o hydraulic-transmission fluid — best on the market for lasting protection
- IH Gear Lube — first choice for use in extreme pressure and shock load conditions

Stock up for the year...and save!

Save **20%** On IH Lubricants
Lubrication Days Sale

SPECIAL. Now Through July



FREE 7 PIECE SCREWDRIVER SET
Valued at \$10.99

Contents — Seven screwdrivers: 4" round blade; 6" round blade; 8" round blade; No. 1 Phillips; No. 2 Phillips; stubby screwdriver; pocket screwdriver, plastic tray.

With Cash Purchase Of \$200 or More Of Parts
While Supply Lasts

USED EQUIPMENT

TRACTORS and MACHINES ARE MOVING. If you're looking for a piece of good used equipment and its not listed below, Call us anyway, could be we just traded what you want.

DISC HARROW & FIELD CULTIVATOR

- | | |
|-------------------------------|------------------------------------|
| 6072 IH #37 Disk | 4969 Miller 12' Disk, Rebuilt |
| 5828 IH 470 21' Disk | 5538 Pittsburgh 10' Disk w/cyl |
| 6280 Krause 2416 Disk | 6036 Case 20' Disk |
| 5842 J.D. 440 12' Offset Disk | 5393 MF 18' Offset Disk |
| 5440 J.D. KB Disc Harrow | 6025 Dunham 12' Packer |
| 6330 J.D. 1630 Disk | 6434 AC 3300 Disk 20 1/2' |
| 6332 J.D. 310 12' 6" Disk | 6515 Dunham 42319 Wing Cultipacker |
| 6421 J.D. BWA 11' Disk | 6651 Deere 210 Disk 12' |
| 6033 A/C 4500 20' Offset Disk | 6722 King Rock Disc 12' |
| 5001 A/C 16' Disk | 6753 Lely 10' Roterra |
| 6560 IH-490 24' Disk | |

PLANTERS & DRILLS & SPRAYERS

- | | |
|--|---------------------------------|
| 2240 IH 400 Planter 4R | 6755 Deere FBA 15x7 Drill |
| 3288 IH 400 Planter - 8R cycle | 5321 IH #10 Grain Drill |
| 9903 1300 Cornplanter - 4 Row (JD) | 5080 J.D. 20x7 Drill Model B |
| 2414 J.D. 494 Cornplanter | 2038 Bean 40 RC Sprayer w/Truck |
| 6790 Deere FBB 17x7 Drill w/Fert. & Grass Seed | 6426 IH 510 Drill 24x6 Plain |

TRACTORS

- | |
|--------------------------------------|
| 6595 IH - F1586D w/30.5x32 Tires |
| 5255 IH - 1466 Tractor |
| 5583 IH F806 Tractor |
| 6452 IH F806 Tractor |
| 6073 IH 766D Tractor w/Cab |
| 5660 F706D Tractor |
| 6186 IH 656 Hydro Tractor |
| 6413 1-464G w/Dunham Loader |
| 5642 F444 Tractor |
| 6035 Case 2670 Tractor 4WD Tractor |
| 6238 Melroe 444 Bobcat Skid Loader |
| 6109 IH 2000 Loader |
| 6161 IH 2000 Loader |
| 6432 IH - F1586D, 20.8x38 Duals |
| 6435 IH 1066 Hydro |
| 6403 MF 1805 4WD w/Blade |
| 6580 IH F 1086 D w/Cab |
| 6526 IH 125 Series C Crawler, Loader |
| 6510 Ford 4000D SU |
| 6180 IH - F886D w/Cab, 400 Hrs. |
| 6594 IH-4366 4WD |
| 6561 IH-F1566 w/cab |
| 6702 IH-F544 D Hydro |
| 6714 IH-424D Tractor |
| 6795 IH-240 w/Loader |
| 6494 Case 900B Tractor |

HAY & FORAGE

- | |
|--|
| 6537 NH 469 Haybine, 9' |
| 4263 IH 990 Mower Conditioner, 9' |
| 6566 Deere 3800 Harvester |
| 6138 Fox Super D 162 Harvester, Self Propelled |
| 5752 IH 650 Harvester, Recutter |
| 4405 IH 650 Harvester, Recutter |
| 2319 IH 650 Harvester Direct Throw |
| 5444 NH Super 717 Harvester |
| 6743 Hesston 1090 Mower/Conditioner, like new |

- | |
|-------------------------------------|
| 5445 NH 717 Harvester |
| 6688 IH 350 Harvester |
| 5814 Deere 737 Rotary Cutter, 13' |
| 6423 Lilliston, 6' Rotary Cutter |
| 4976 NH 320 Baler |
| 5776 Bushog 9' Rotary Cutter |
| 5371 IH 56 Blower |
| 5360 Deere 65 Blower |
| 5775 IH 110 Forage Box, 16' |
| 6090 IH 110 Forage Box, 16' |
| 6091 IH 110 Forage Box, 16' |
| 6802 NH 1034 Stackliner Baler Wagon |

MISCELLANEOUS

- | | |
|---------------------------------|--|
| 6783 Artsway 700 Mixer w/Scales | 6740 IH 85 6R Frt. Mdt. Cult. |
| 6334 Leon 8600 Rock Picker | 6319 IH 55 10 Shk. Chisel Plow w/Consertil |

FACTORY REBATES ON NEW TRACTORS:

Models: 986, 1086	\$3,000 or	\$4,500
1486, 1586	\$4,000 or	\$6,000
3388, 3588		
3788	\$5,000 or	\$7,500

FACTORY REBATES ON NEW COMBINES:

Models: 1440, 1460, 1480	\$3,500 or	\$5,000
1420		

Up to \$7,000 Discount on the Axial Flow Combine
* IH RED POWER DOLLAR CERTIFICATES MAY BE REDEEMED BY THE PURCHASER AT C.B. HOOBER & SON INC. ON THE PURCHASE OF ADDITIONAL NEW IH EQUIPMENT OR PARTS BY DECEMBER 31, 1981



United Parcel Service

C.B. HOOBER & SON INC.

INTERCOURSE, PA

717-768-8231



★ CALL US - WE PROBABLY HAVE IT ★ WILL SHIP SAME DAY VIA UPS-PPSH-BUS-AIR FREIGHT-ETC.