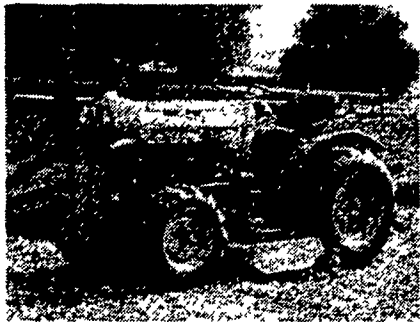
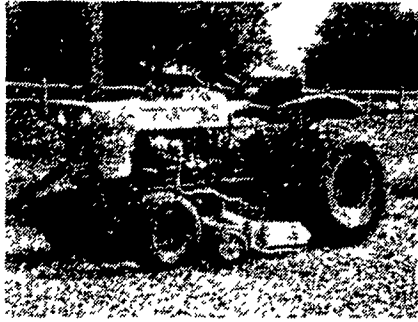


# USED COMPACT DIESEL TRACTORS



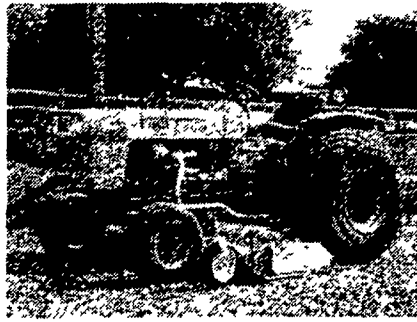
Kubota B7100DT - 16 hp., 4 wd, Ag tires, 325 Hours, with Woods 48" Undermount Rotary Mower

**\$4800**



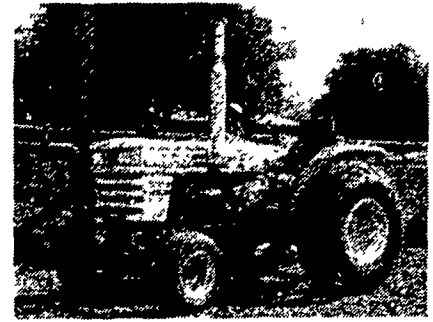
Kubota L185 - 18 hp., 2 wd, Turf Tires, 280 Hours, with Woods 60" Undermount Rotary Mower

**\$5000**



Kubota L225 - 24 hp., 2 wd., Turf Tires, 1225 Hours, with New Woods 72" Undermount Rotary Mower

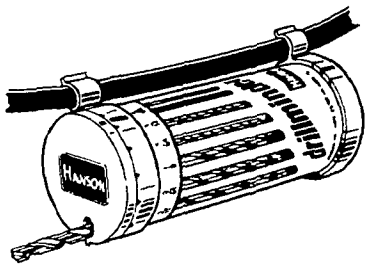
**\$5000**



Bolens G-192 - 19 hp., 2 wd, Turf Tires, 60 Hours, with Bolens 54" Undermount Rotary Mower

**\$5000**

## THE NEW HANSON DRILLMINDER™ DISPENSER



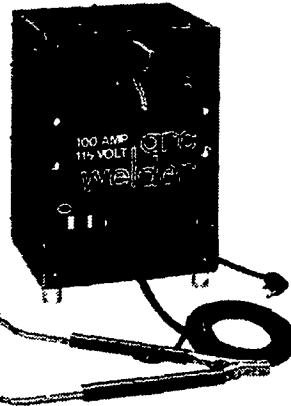
Only **\$16<sup>99</sup>**

A handy, neat dispenser that allows you to select and receive the one drill bit you desire. Stands up on the job or clips to electric drill cord for storage. Comes loaded with 13 HANSON HIGH SPEED DRILL BITS, 1/16" thru 1/4" by 64ths. Also available is the DRILLMINDER Dispenser Only to load with your own drills.

## 100 AMP / 115 VOLT WELDER

NOW SAVE **\$29.55**  
WAS **\$129.50**  
NOW **\$99.95**

AC WELDER  
110-104-001



**CENTURY**

- 100% DUTY CYCLE
- EXCLUSIVE SQUEEZE LOCK
- WELDS, BRAZES, HEATS, AND SOLDERS WITH MULTI PURPOSE TORCH
- HEAVY DUTY CONSTRUCTION PREVENTS STICKING
- OPTIONAL WHEEL KIT AVAILABLE
- HELMET, CABLES & ACCESSORIES INCLUDED



7/4" Model 6365

**\$146<sup>00</sup>**

8 1/4" Model 6405

**\$165<sup>00</sup>**

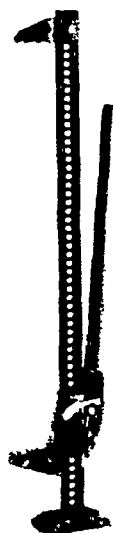
## HEAVY-DUTY CIRCULAR SAWS POWERFUL • 13 AMP MOTOR

LIGHTWEIGHT HEAVY-DUTY BALANCED CONTRACTORS SAWS WITH SUPER SAWING FEATURES AT AN ECONOMICAL PRICE!

- All Ball and Roller Bearings
- Serviceable...External Brushes
- Heavy-Duty Construction Throughout... Strong — Non-Conductive Glass Filled Nylon Housing and Handle
- Quick Return, Heavy-Duty, Safety Telescoping Guard, Smooth, Easy Action

**1978 CHEVROLET CHEYENNE 1/2 TON PICKUP**  
6050 GVW, 350, Auto., AC, PS, AM, FM, 41,000 Miles, Light Blue, **\$5250<sup>00</sup>**  
One Owner

## AMERICAN



### PUSH-PULL JACK MODEL 1400

8000 lbs. CAPACITY  
A versatile Tool (with the flick of a lever) That will lift, push, or pull 4 Tons. Safety designed pins that bend when jack is overloaded are used instead of shear type pins that break off and drop load. Made of malleable iron castings, not stampings used by others. Great for cable, wire and belt tension jack, farm use, pole maintenance jack, construction and maintenance.

List Price \$61.05  
**OUR PRICE \$49<sup>95</sup>**

## OLIVER 1855 DIESEL TRACTOR

Serial #228284

This tractor has been completely rebuilt by us and has a new 1855 repower engine and New Tires: 18.4x38 Goodrich Radials

## USED GRAIN TRUCKS

### 1958 CHEVY

21,000 GVW, V8, 4+2, 69,000 miles w/14 ft. Midwest Grain Dump Body.

### 1972 INTERNATIONAL FLEETSTAR 2000

32,000 GVW, 5+2, 230 Cummins, with new Omaha Standard 18 ft. grain dump

### 1974 FORD F750

27,000 GVW, air brakes, 391 V-8, 5+2, 10:00x20 tires, 27,000 miles with new Omaha Standard 16 ft. grain dump.

### 1974 DODGE D500

18,500 GVW, V8, 5 Speed, 6 New 9.00x20 Tires. Truck has been reconditioned by us and is ready to go to work, with New Omaha Standard 12 ft. Grain Body, Steel Floor, 40" Steel Sides, 26" Cattle Fold Down Racks, Omaha 51DA Single Cylinder 10 Ton Hoist, New 30 gal. Aux. fuel tank, New 24" Tool Box **\$8500<sup>00</sup>**

### 1979 FORD F250

7900 GVW, 400 V8, 4 Speed, 9.50x16.5 Tires, 13,000 Miles, With New Omaha Standard 9 ft. Grain Body, Wood Floor, 40" Steel Sides, 26" Cattle Fold Down Racks, Omaha 41DA Single Cylinder 4 Ton Hoist **\$8250<sup>00</sup>**

★ Other Used Grain Trucks In Stock

## USED 16 FT. MIDWEST GRAIN BODY

With 40" Steel Sides, 12" Extensions, Fold Down Cattle Racks, Fertilizer Auger, 2 Cylinder 15 Ton Hoist With Pump

**\$2800<sup>00</sup>**  
Complete

## ECHO

### ECHO TRIMMER MODEL GT 200

- 21 CC Engine
- Tap For Cord Trimmer Head
- Flex-Drive Shaft

Reg. \$139.95  
**SALE PRICE \$109<sup>95</sup>**  
Set Up & Tested

## USED OLIVER TRACTOR PARTS

NOTE: We Have A Good Selection Of Used Oliver Tractor Parts For The Following Models: 55, 66, 77, 88, 1600 Call and Check With Paul Weaver We Will Ship UPS

- 1 - 155-897A Reconditioned Crankshaft with NEW Bearings, .010 Rods - .020 Mains, Fits - 16550, 1750G, 1755G, 1800G
- 1 - K-119D Reconditioned Crankshaft with NEW Bearings, .010 Rods - .010 Mains, Fits - Super 88 & 880 Gas or Diesel
- 1 - 30-307-8663 Reconditioned Crankshaft with New Bearings, .010 Rods - .020 Mains, Fits - 1750D, 1755D, 1800D, 1850G, 1855 G&D, 1950, 1955
- 1 - 166-425A Reconditioned Engine Block, Fits - 1655D
- 1 - Wide Front End - Rebuilt, Fits - 1550 - 1955
- 1 - Rebuilt 55 Gas Engine, Complete
- 1 - 770 Gas Engine, 1100 Hours, Complete

### RECONDITIONED USED ROTARY MOWERS

- Vormado Rotary Mower, 3 H.P. 20" Push .. **\$50.00**
- White Rotary Mower, 990-071, 3 H.P., 20" Push .. **\$75.00**
- Lawn-Boy Rotary Mower, 8229A 21" Self-Propelled, Side Bagger .. **\$175.00**
- Bolens Rotary Mower, 8545, 4 H.P., 22" Self-Propelled, Electric Start, Mulching Mower .. **\$175.00**
- Lawn-Boy Rotary Mower, 7268, 21" Push, Side Discharge .. **\$195.00**
- Bolens Rotary Mower, 8554, 5 H.P., 22" Self-Propelled, Mulching Mower .. **\$200.00**
- Jacobsen Rotary Mower, 42171, 4 H.P., 21" Self-Propelled, Side Bagger .. **\$200.00**
- Lawn-Boy Rotary Mower, 8233, 21" Self-Propelled, Rear Bagger .. **\$225.00**
- Bolens Rotary Mower, 8554, 5 H.P., 22" Self-Propelled, Mulching Mower .. **\$225.00**
- Bolens Rotary Mower, 8644, 4 H.P., 22" Self-Propelled, Mulching Mower .. **\$300.00**
- White Rotary Mower, 990-142, 4 H.P., 22" Self-Propelled, Rear Bagger .. **\$325.00**
- Bolens Rotary Mower, 8648, 4 H.P., 22" Self-Propelled, Mulching Mower .. **\$325.00**

## WHITE 378 REAR MOUNTED 4 ROW CROP CULTIVATOR

Vibra Tine Shanks, Two Spring Cushion Rolling Fins

**\$1900<sup>00</sup>**

WHITE - BRILLION -  
BUSH HOG - FOX -  
VICON - KUBOTA -  
BOLENS - HOMELITE -  
ECHO - HARSH -  
OMAHA STANDARD

RD 4, East Farmersville Road, Ephrata, PA 17522  
Located in the Village of Farmersville, Lancaster County  
717-354-4271

Hours: Mon., Tues., Wed. & Fri.  
7:30 A.M. to 5:30 P.M.  
Thurs. to 9 P.M., Sat. till 3 P.M.

# FARMERSVILLE EQUIPMENT INC.