

FARM EQUIPMENT

Person who bought 2 feed bins from Donald Kreider Elizabethtown, PA please contact at 717-367-5784 (lost your name and phone)

1973 MF 300 combine, diesel with 2 row corn head, straw chopper, cab & heat, excellent condition, kept inside. Call 201-735-4142

Int. 1100 mower, Jonathan Fisher, Spring Hill Rd., Box 215 Rd 1, Kirkwood, PA

For Sale - JD 555 crawler loader, 1976 model w/rops, equipped for backhoe or ripper, new track, 2180 hrs., excellent condition, \$27,500. 717-532-6237 5-9; Shippensburg, PA

1 Lundell model 230 chopper; 1 Case model 550 hay conditioner. 215-857-5587 after 5 p.m.

Case 1175; 970, CA; 870; 430 w/loader; 2 930's; 1030, 730; 1370 CA; 1070 CA; 470, Long 900. 301-582-1927

Minneapolis Moline GVI with turbo charger, 23.1 rear tires, hydraulics, \$3800, good cond., can put belt pulley on it. 717-298-2543

Cat-D-6 Hydraulic Dozer 8U5916 \$7500.00, AC 11B Hydraulic Dozer \$7500.00 Komatsu D-60 1972 Loader \$9500.00, John Deere 540A 1973 \$9500.00, 1972 Franklin 130B Skidder \$9500.00 Timberjack CJ5 Diesel \$5500.00 Cat D-4 Winch Hydraulic Blade \$4500.00 Others, 1965=B61 Mack Tri Axle 20 Log Bunks, Prentice Loader, PS # 13,500.00 1966 White Log Bunks, John Deere Loader, PS. Air Brakes \$5000.00 Trade, Finance 814-793-2829. Curry Supply Martinsburg, Penna

For Sale - Dodge 220 diesel truck with John Blue fertilizer and wet lime spreader, also NH haybine 495, 12' like new, 717-788-2865

Owatonna 310 skid steer, like new, excellent for small work. Mifflin Co. 717-483-6756

For Sale - Int 340 3 pt., good condition, \$2150. 201-879-6465.

For Sale - JD 3010 Diesel, narrow front, fair condition. 717-532-7054

2 bale wagons and 3 elevators, 717-358-3129

Allis Chalmers tractor, 1954, model G, \$1500. After 6 p.m. 215-588-1505

For Sale - IH Vibra shank field cultivator, 19' folding wings, 717-758-1739

Simplicity tractor, 20 hp. front end loader, rear PTO, 3 pt. hitch turf tires, 717-225-5873

JD 4400 combine, diesel, air, monitor, 4 row corn head, very clean, 215-252-7091

MF 410 combine, 12' head, excellent condition, 717-354-5092

For Sale - Potato bins, 1 14' Dahlman on Gehl wagon, 1 16' McConnell on Int. truck, 215-593-5004

Int. 55W wire tie baler, rebuilt twister. 201-782-5722 evenings.

4 cyl. Wisconsin engine model VF4, electric start, new battery with hyd attachment. 215-286-0295

JD 7720 combine, 16' grain platform, 6-30 corn head, straw chopper, 600 hrs., 301-778-5255 eves.

For Sale - to settle estate JD baler #346 with ejector, NH haybine #488 Both in excellent condition. Priced to sell quick. 717-246-1972 ask for Lee or Dave.

For Sale - L225 Kubota diesel tractor, 24 h.p. 80 hrs., 3 pt. lift, 2 speed PTO, mint condition. 717-966-0231.

199 Oliver diesel power unit for parts. \$550. 201-254-2020.

FARM EQUIPMENT

For Sale - Allis Chalmers HD12G track loader with 3 yd. bucket, \$18,500. Nat'l Bank of Wyalusing, Pa. 717-746-1214.

For Sale - 11 1/2' Glenco field cultivator with 12' buster bar. JD 15A flail chopper. JD 8 forage chopper with new knives JD 2-row wide corn head. Lancaster Co. 717-665-7434

Asplundh tree chipper, 12" cutter head, powered with 6 cyl. Ford, \$4500

Vermeer stump grinder, 36" cutter, Wisconsin powered and hyd. control, \$3500.

VLSMEIER EQUIPMENT INC.
Route 309
Montgomeryville, Pa. 18936
Phone: 215-699-3533

1979 Holder Forestry 4 WD tractor, Cultitrac A55F, less than 300 hrs. Island double-drum winches, stacking blade, other accessories, like new condition, 814-647-5392

For Sale - 1970 Bolens tractor, model 1000, 10 hp. w/hyd. lift and mower, good condition, if interested call Barbara 717-665-5927

For Sale - 1080 MF tractor, NI 3 beater manure spreader, like new. 717-328-2458.

For Sale - One Patz used Liquid-Vator, used 2 years. Good condition. Call 814-355-5941 or 355-4231.

For Sale - 2 Big Dutchman floor broiler size feeders and one gross gal. jug chick founts. 717-689-9617.

For Sale - Bulk feed bins - 13, 20 & 24 ton. 717-689-9617.

For Sale - Fox 3310 harvester 3 row 30" corn head, 6' hay pickup, elec. controls, exc. condition. 215-932-8999.

FARM EQUIPMENT

Will trade backhoe for farm tractor. Busch, 717-845-7808 or 717-755-9344

For Sale - 3 in 1 machine. 350 JD diesel crawler loader with backhoe and blade Call Arkport 607-295-7333.

For Sale - 20 KW 3 phase Gen. set 3-53 Detroit, 15 KW 3 phase Gen. sets 2-71 G.M. power units, used & rebuilt G.M. 2-71, 3-71, 4-71, 6-71, 6V71, 8V71 also 6V53 Detroit truck engine. Multihoe loader, backhoe 3.53 Detroit, \$3500. 717-523-1974, Lewisburg, Pa.

For Rent - 3000 gal. Van Dale liquid manure spreader with or without injectors, \$3 per load without injectors. 717-656-7305.

For Sale - Air Blast sprayer & pint boxes. 201-449-6278.

For Sale - 1924 Case tractor in good running condition. 717-648-7015.

For Sale - JD 25 3 pt. harvester, AC 720 harvester \$400, IH 990 haybine, good, \$950. IH 550 spreader \$350. 64" steel tractor wheels. 717-733-0575.

MF quick-tach combine, 10' grain platform, 2 R corn head, cab & extras, \$6900. 201-859-3003.

For Sale - NH 354 grinder-mixer, excellent condition, also JD FB grain drill with grass seed attachment, 215-383-6818.

Collectors items. 3 IH F-20 & 2 F-14 Farmalls, 1 F-19. Will sell whole or parts, NH 1002 stack wagon, good condition. 215-795-2591.

30 bu. Weaverline cart, James Pennel, Loysburg, PA 16659 814-766-3310.

Dahlman potato bulk box \$1200, 215-593-5345.

For Sale - AC 303 baler with thrower, \$550 or offer. Brillion double roll cultipacker, \$60. 717-866-4185 or 215-589-3966.

FARM EQUIPMENT

For Sale - AC b6 combine header needs repair, AC 60 combine for parts 717-527-4015.

For Sale - JD 30 potato digger 302-335-5497. Kent Co., DE.

2 cylinder Deutz diesel, model F2L912, good condition, 717-532-8601

For Sale - IH 4586 4 wheel drive tractor, 550 hrs., excellent condition, 20.8 x 38 dual wheels, 4 hyd. valves, decelerator, horn, swivel seat. 717-375-2274

For Sale - 702 gas NI Uni system with corn sheller & 3-row corn head, 36" to 40" row. 717-375-2274

For Sale - Ford 8-N tractor, 8 sp. forward, good tires, excellent condition, \$1900. 717-367-4940

For Sale - Case 960 combine with cab, hume reels, good condition, Columbia Co. 717-356-7482

Case 990 Diesel with 60" bucket loader and 5 shank chisel plow, 634 hrs, excellent condition \$10,000; NH #675 manure spreader, excellent condition \$2000, Oliver #252 10' tandem offset travel disc, good condition \$500; NH #23 rotary mower \$300. Chester Co. 215-857-5279.

Chisholm Ryder 656 hydro bean picker, \$11,500. Chisholm Ryder 504 bean picker, \$7500. White 271 18" disc with incorporation equipment. \$5200. IH 55 13 shank soil saver, \$2900. Kawnee 21' field cultivator with hitchhiker bar, \$2200. Stanhay jumbo 4 row precision planter with tool bar, \$950. 1000 RPM centrifugal pump, \$125. Brillion 25' spring tooth harrow, \$1700. JD 7000 4 row Max-Emerge planter with monitor, \$5500. Stoltzfus 28' boom type fertilizer spreader, \$2500. 2 Gasboy gas engine powered fuel pumps with meters, \$150 ea. 717-752-2323.

FARM EQUIPMENT

John Deere 410 round baler, excellent condition, call after 6 p.m. Dauphin Co. 717-545-3948

1960 Chevy C-60 dump truck, runnable condition, would make excellent dump trailer, cheap 717-949-3074

For Sale - Sperry New Holland L-445 skid loader, 2 buckets and 1 fork, good condition, best offer, 215-589-2941

Tobacco Laths, New & Used 717-656-9045 between 7 a.m. - 4 p.m. Mon.-Fri.

For Sale - 91 Int. combine, 3 heads, 830 Case with cab, diesel, 301-833-1847

Wanted - 3 row narrow row corn head for NI Uni Chopper & Sheller. 304-263-9801

VAI Case tractor, manure bucket and 5' sickle mower, runs good, has good tires \$1000 or best offer, 717-943-2433 after 6

Will buy & sell all types of horse drawn equipment. 215-593-5754

2 row mounted NI corn picker, w/Oliver 77 or 88 mounting, 215-932-9500 Chester Co.

IH 101 combine, 10' head, ready to go, Always housed, never in corn, nice condition \$1200, Original owner. 717-684-5895 after 6

For Sale - 2-105 White tractor, 105 hp., diesel, 540 + 1000 pto, hydra shift, 18.4x38 rear, 2 spool valve, 3 pt. hitch, \$12,000 717-444-3216 eves.

For Sale - 67 Chev., sprayer, w/500 gal tank, best offer. 717-394-3494 after 6 p.m.

For Sale - M Farmall with 3 point hitch. 36' New Holland elevator. 717-244-4203.

For Sale - MF 135 Farmall 300 & 400, NH 36 crop chopper, NH 271 baler w/PTO thrower, NH bale wagon, IH 350 transport disc, 215-562-4464.

FARM EQUIPMENT

Corn planter, 2-row mounted, working condition, \$75. York Co. 717-755-8449.

55 gallons Sunoco oil, 20-20W "diesel", \$160 per drum. Steam cleaner, like new \$500. Devilbiss undercoating machine, \$100. Chev. van, automatic, inspected, 6 cylinder, runs good, \$900. Phone 717-273-6018 after 5 p.m.

Farm Hand Rake, 5 wheel (new), Lancaster County, 717-733-8239.

Fuel injection calibrating test stand, various lines and adaptors, like new motor. 717-456-5907 after 5 p.m.

New Holland 315 Baler (new), Lancaster County, 717-733-8239.

NI 8 ton manure spreader w/end gate. 717-665-2671

16' Grove bale wagon, good condition \$750, Kelley front end loader, Hyd. bucket \$500, 717-235-4960 after 6 p.m.

For Sale - One 380 Oswalt Ensilmixer with scales, stainless steel bottom liner mounted on 1970 Ford Ln. truck and mixer in excellent condition. 703-434-4459.

Farmall hydro 100, excellent condition. 717-528-4681.

Late model JD 45 square back combine with 12' grain head. JD 2640 fully equipped. Lancaster Co. 215-267-3281.

To be sold at David Good's Auction-Wed. July 15- portable hammermill, PTO or belt, dust collector, bagger, screens, very good condition, Lanc. Co. 717-626-7387.

For Sale - Allied hay and corn elevator, 25' high, 25' long, good condition, interested 717-665-5927.

JD 694 AN cornplanter with top fert. auger, vg. 1952 8N Ford tractor, vg. 1965 MF 150 tractor with 4000 lb. fork lift, excellent cond. 215-967-4500 after 5 215-868-3220.

FARM EQUIPMENT

Having given up feeding silage, we now have available for sale a complete set of silage harvest equipment and auto. auger feed system. IH chopper, JD silage wagon, 14' Silo-Matic unloader, belt conveyors, auger conveyors with motors. Can be seen working. Call for appointment 201 534-4644.

For Sale - One 300 cuft. Davis mixer, scales, mounted on trailer, stainless steel bottom liner, good condition. 703-434-4459.

AC D-21, cab, 24.5-32 tires, fully equipped, excellent condition. Frederick Co., MD 301-845-8929.

Wanted - Post-hole digger 3 PTH, will buy or trade for JD#5 7' mower 3PTH, Kirkwood 717-529-6715.

Schramm gas wheel loader backhoe, \$2750. DENNIS M. MILLER EQUIPMENT Rt. 22 Grantville, PA 717-838-1888 anytime 717-469-0937 daily

For Sale - Owatonna skid loader, diesel, \$3500. 717-626-6142.

FOR SALE
5000 Watt 3 phase ONAN Electric Plant
10 KW ONAN Standby Electric Power Plant, reconditioned.
VG Wisconsin power unit w/clutch and electric start.
WES STAUFFER
717-738-4215

For Sale - Super Hayliner #69 baler with bale ejector, excellent condition. 201-689-1893.

JD B reconditioned & sound, must sell for college - with nearly new #5 mower, \$1400. 215-234-8662 after 5.

Planter, 2 row IHC horsedrawn, corn-soybean, fine condition, \$175. 215-234-8662 after 5.

JD 35 forage harvester w/2 row corn and pickup head. Papec forage wagon, Somerset Co. 814-634-5480.

VAN DALE & STARLINE SILO UNLOADERS SALES & SERVICE **LANCASTER SILO CO., INC.** "LANCASTER" CONVEYORS TAPER BOARD FEEDERS BELT FEEDERS

2008 Horseshoe Road - 2436 Creek Hill Road LANCASTER, PA 17601

MANUFACTURER & BUILDER OF QUALITY WET-CAST CONCRETE STAVE FARM SILOS

LANCASTER SILO'S ARE BUILT WITH THE BEST SILO HARDWARE AND ACCESSORIES AVAILABLE:

- ROOF - ALUMINIZED STEEL OR COLOR CHUTE - STAVE OR STEEL AVAILABLE
- RODS - DISCHROMATED 9/16" HI-STRENGTH
- SPREADERS - BOX BEAM CONSTRUCTION
- DOOR FRAMES - STEEL REINFORCED CONCRETE
- DOORS - HINGED DOOR OR REMOVABLE DOOR w/FORMED STEP
- INTERIOR - HAND TROWEL PLASTER w/ WATER PROOF CEMENT & SEALER

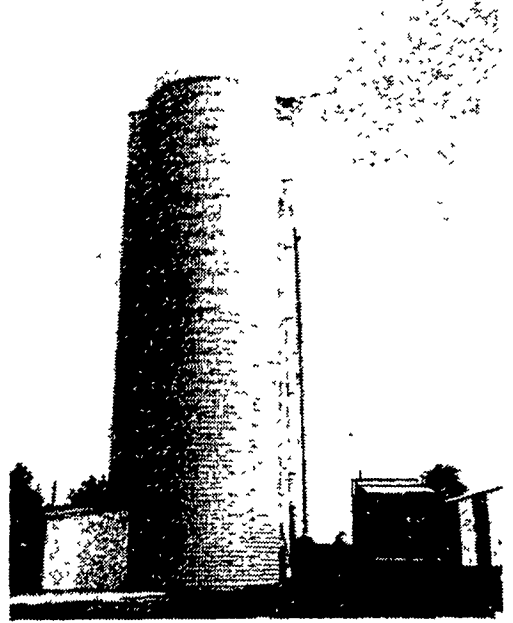
NEW EQUIPMENT SPECIALS:

GET READY FOR SUMMER: 24" CIRCULATING FANS w/1/2 H.P. MOTOR \$125.00

ROUND HAY RACKS - 2 PIECE
18 Openings - Can use for regular or Large Bale \$170.00

FARM GATES w/HINGE & LATCH (Made with Square Steel Tubing)	
10 Ft. GATE	\$58.00
12 Ft. GATE	\$64.00
14 Ft. GATE	\$70.00
16 Ft. GATE	\$76.00

NEW SHIPMENT - 2x8x16 TILE 75¢ ea.
ALSO IN STOCK 2x5x12 TILE 40¢ ea.



USED 20x70 LANCASTER SILO w/NEW VAN DALE MAGNUM

VAN DALE "MAGNUM" SILO UNLOADER
A SUPER CAPACITY HAYLAGE UNIT. BE READY FOR FALL NEW - REBUILT - WILL TRADE!

REBUILT STARLINE #70 UNLOADERS:
12' - \$1595.00 16' - \$1795.00
14' - \$1695.00 18' - \$1895.00
COMPLETE w/5 H.P. MOTORS
1 - 16' BADGER UNLOADER \$1595.00
1 - 20' BADGER (as is) \$AVE
1 - 20' JAMESWAY VOL. II \$2000.00
1 - JAMESWAY (as is) \$AVE
WE WILL TRADE YOUR UNIT!

DID YOU TAKE A GOOD LOOK AT THIS CORN CROP???
HAVE A PLACE TO STORE IT!
FEED THAT CORN. IT IS THE BEST SOURCE OF ENERGY THAT GROWS ON YOUR FARM.
MAKE THAT DECISION NOW!
PLACE A SILO ORDER WITH US IN JULY - BEFORE THE RUSH - AND - SAVE - SAVE!!

USED & REBUILT EQUIPMENT

USED 2" PIPE - 50' FT.	
USED 2-CAN MILK COOLER w/1 1/2 H.P. COMPRESSOR	\$100.00 \$290.00
(2) 18' TITAN AUGERS, LIKE NEW	\$250.00
(1) 9 HP WISCONSIN MOTOR w/ STARTER, OVERHAULED	\$250.00
(1) USED STARLINE 40' CHAIN CONVEYOR w/MOTOR	\$495.00

RECONDITIONED SPECIAL
1 - Gehl 800 Recutter-Blower w/1000 R.P.M. P.T.O. - Very Good
Excellent Unit For Grinding High-Moisture Ground Ear Corn \$2000.00

FOR COMPLETE INFORMATION, CALL:
Larry Hiestand - Office - 717 - 299-3721
Wayne Lloyd - Sales - 717 - 299-3722