

Accident mars vegetable growers tour

Vegetab

BY LAURIE DOBROSKY
YORK — The Pennsylvania Vegetable Growers Association's annual tour, held here on Monday and Tuesday of this week, was marred by a freak accident almost at its outset.

One of the wagons in the tour caravan, carrying 25 people, skidded in the mud as it traveled down a steep, dirt road on Raab's

Fruit Farm — the second stop of the day. Frightened passengers jumped to the ground, some stumbling, while others stayed on board until the wagon slid to a stop in a road ditch.

While the rest of the 90 tour participants anxiously awaited the arrival of the local ambulance crew, others went to the aid of the fallen passengers.

Two people had to be taken to the York Hospital and are being treated for injuries suffered in the accident. Theodore Peak from Elyria, Ohio and his wife Harriette are in serious and satisfactory conditions, respectively.

The injured couple had been visiting the area on a vacation and decided to join the tour after having read about it in a local paper.

According to York County Extension Agent John Smith, Mrs. Peak admitted she pulled her husband off the sliding wagon, and now questions whether her husband might have been uninjured if he had stayed on board — thus preventing the fall.

After the police reports and general confusion was put in order, the tour got underway again. This time participants boarded buses and private cars to continue their four-stop trip.

The tour, sponsored by the Pennsylvania Vegetable Growers Association and the Cooperative Extension Service, included the major vegetable growing farms in York County; and also included a number of processing plants and markets in the area.

John Fitz, the local tour chairman, welcomed the vegetable growers to his farm Monday morning. The Fitz farm, operated by three generations, raises sweet corn, parsley, cauliflower, sugar peas, red beets, peppers, tomatoes, and the list goes on, which are sold through two local farmer's markets and a roadside stand. Their aim in producing crops is to hit the early market and "to raise only what we will sell," said Fitz.

The Fitzes also purchase produce from the Baltimore wholesale market to keep their shelves stocked year round with fresh fruits and vegetables.

Unlike the Fitzes who go off the farm for some of their produce, Joseph Raab, Dallastown, raises all the fruits and vegetables he sells on his 137 acre farm. Using 'pick your own' on selected crops

and a farm market for the others, he markets a great variety of produce, with 77 acres set up for raising vegetables and 60 acres planted in fruit trees.

It was while touring the Raab fields that the unfortunate wagon accident occurred. As a result of the time delay, the tour of the Summers Canning Company was

(Turn to Page A21)



John Fitz, discusses his vegetable operation with the 90 members of the Vegetable Growers Association who toured York County this week.



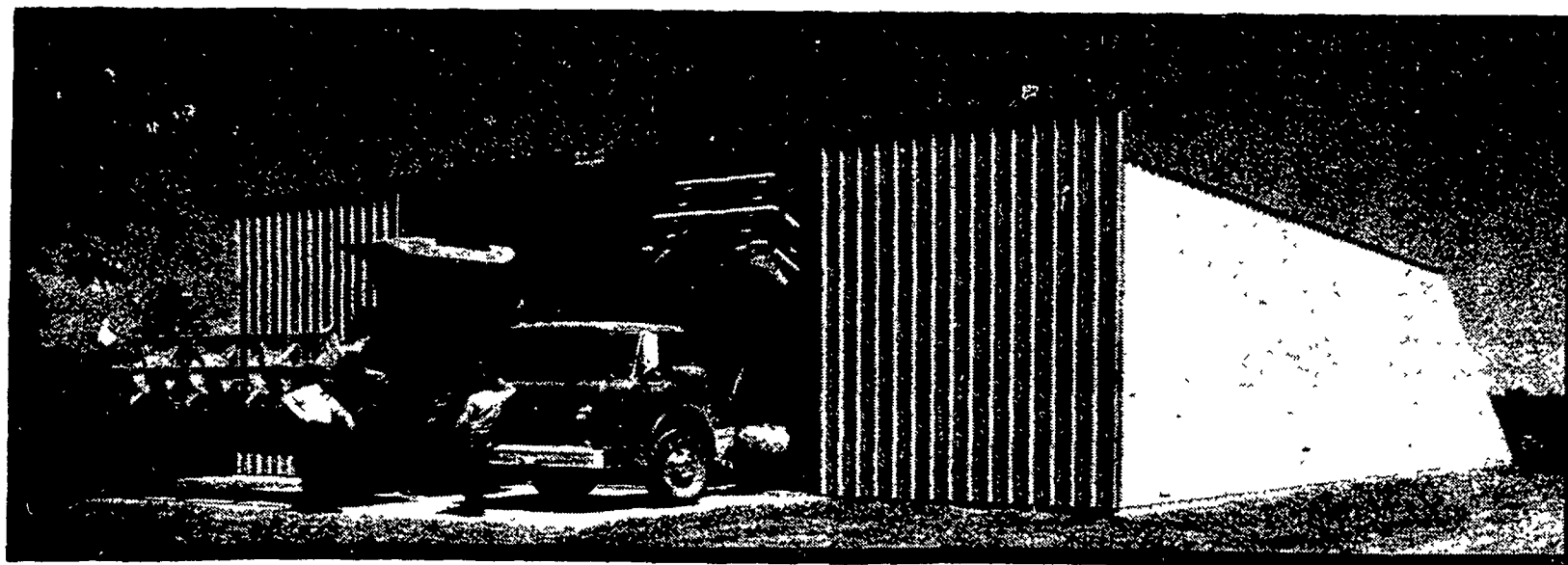
John Shearer, who farms 7000 acres of cropland, explains the operation of his flexible contour plow.

(Continued from page A20) cancelled. How Garman, a representative of the company's farm spoke briefly of operation.

After lunch at the tour continued with Hanover Brands Inc., the largest vegetable processor in the East Coast. The company is located in the town of Hanover, Pa. The namesake is used for canning vegetable and cans. The company also grows other plants in Pennsylvania and are used to produce vegetables.

The final stop on the tour was the John Shearer farm, which involves about 7000 acres of land, which ranks as the largest vegetable farm in the state. Shearer owns 7000 acres; the rest of the land is rented. He plants wheat, 600 acres of soybeans, 600 acres of field corn, 1000 acres of field corn, 1000 acres of popcorn, spinach, and other crops. Shearer employs techniques and farm tools for marketing crops to Hanover Brands. All those acres of grain harvested, Shearer has a number of large pieces of equipment, including tractors, two six-wheelers and a snapboiler. To insure his crops, he maintains a bulk fertilizing operation right

Butler Formated Buildings

SEE
YOURBEFORE
YOU BUY

FARMSTED® I Buildings - Engineered For Farmer Erection

**YOU CAN OWN THIS BUILDING
WITH LOW MONTHLY PAYMENTS***

* To Qualified Buyers

40'x75'x14'
with 20'x13' D/S Door

FARMSTED® I Buildings
Galvalume Walls and Galvalume Roof Sheets*
* 20 Year Warranty



WRITTEN WARRANTY
SEE YOUR
AGRI-BUILDER
FOR DETAILS!

LEA
See
Agri
For I

- ★ VARIOUS SIZES HEIGHT AND WIDTH AVAILABLE
- ★ THESE BUILDINGS ENGINEERED FOR SELF ERECTION (Butler will furnish Erection and Foundation Drawings)

BUTLER MFG. CO.

Attn. P.E. Hess
Box 337, Oxford, PA 19363

Dealer Inquiries Available in: Pennsylvania Counties: Armstrong, Indiana, Erie, Crawford, Warren, Elk, Cameron, McKean, Clinton, Lycoming, Sullivan, Wyoming, Luzerne, Columbia, New Jersey Counties: Sussex, Morris, Passaic, Atlantic, Cape May
No Dealer Fees.

Name _____
Address _____
County _____ Zip _____
City _____ State _____
Phone _____
(Include area code) LF



**KNOXVILLE
CONSTRUCTION**
P.O. Box 535
Knoxville, Pa. 16928
PH: 814-326-4188

**B.T.
CONSTRUCTION**
P.O. Box 535
Biglerville, Pa. 17307
PH: 717-677-6121

**LEROY E. MYERS,
INC.**
Route #1, Box 163
Clear Spring, Md. 21722
PH: 301-582-1552

D. E. SMITH, INC.
Mifflintown, Pa. 17059
PH: 717-436-2151

POGO INC.
1841 Jerry's Road
Street, Md. 21154
PH: 301-692-5350

**FOUR COUNTIES
CONTRACTOR**
R.D., Box 249
Coalport, Pa. 16627
PH: 814-672-5751

**HASCHEN
AGRICULTURAL
SYSTEMS**
P.O. Box 505
Chestertown, Md. 21620
PH: 301-778-5800

A. E. ENGEL, INC.
P.O. Box 216
Marlton, N.J. 08053
PH: 609-983-4404

C & M SALES INC.
R.D.#1
Honesdale, Pa. 18431
PH: 717-253-1612

ORVILLE MACK
P.O. Box 47
Nazareth, Pa. 18064
PH: 215-759-1331

**BRIDGEWATER
BUILDING SYSTEMS
INC.**
R.D. #2
Thompson, Pa. 18465
PH: 717-727-2868

**O. A. NEWTON
& SON CO.**
Bridgeville, Delaware 19933
PH: 302-337-8211

**NICKLIN STEEL
BUILDERS**
301 N. Broad Street
Grove City, Pa. 16127
PH: 412-458-7243

**TRI-SI
D**
Dea
PH: :