

Public Sales Register

THURS SEPT. 10
Dispersal of Holstein
Dairy Cattle. Directions

take Rt. 272 North from
Ephrata to Schoeneck
Road, take Schoeneck
Road to Schoeneck, turn

right at Fire Hill. First
farm on right. Sale by
John M. and Lena H. Noit,
John E. and Paul E. Mar-
tin, Auctioneers.

FRI. SEPT. 11, 5:30 P.M.
Gap Auction. Antiques
and Household Goods
sold at every auction.
Located off Rt. 41, Lan-

caster Turkey Hill Minit
Market, cross RR bridge,
Ira Stoltzfus & Son, Auc-
tioneers.

FRI. SEPT. 11 - 6:30 P.M.
Houvalle Farms 7th
Yorkshire Production Sale
of Bred Gilts, Open Gilts
and Boars at the Lebanon
Fair Grounds, Lebanon,
PA for info. contact
Elwood E. Houser
717-272-5798 or
273-2921

SAT. SEPT. 12 - 10 A.M.
Public Sale of Household
Goods & Antiques. Take
Rt. 322 East from
Ephrata, Pa. to
Hinkletown, at
Hinkletown turn South on
to Farmersville Rd.; go to
T Rd., property on right
next to Sensenig's Fur-
niture. Sale by Levi M.
Hoover Auctioneers John
E. & Paul E. Martin.

MON. SEPT. 14 - 2 P.M.

Danville Livestock Route 11, Danville, PA.
Market, cattle and hog Melvin M. Lehman,
auction. Located Old owner.

AUCTION SALE

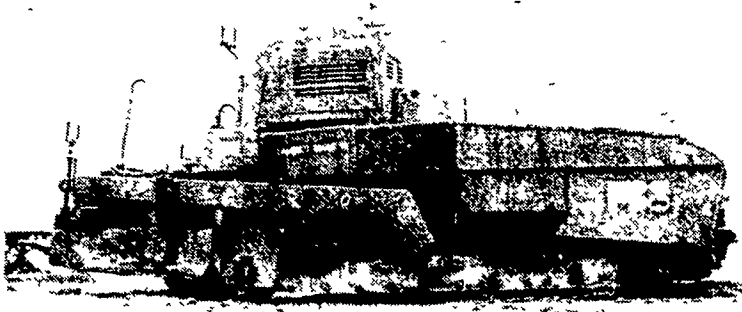
COMPLETE LIQUIDATION
PAVING & EXCAVATING EQUIPMENT, DUMP TRUCKS,
TRUCK TRACTOR, LOWBOY, & CONTRACTORS TOOLS
WEDNESDAY, JULY 15

10:00 A.M.
ALLENTOWN, PA.

EVERYTHING SELLS TO THE HIGHEST BIDDER

NOTICE: Bankruptcy Liquidation Sale, as ordered by Karl E. Friend, Trustee, Bankruptcy of Frank B. Saylor Co., Inc. Bankruptcy No. 81-00569. Everything in this sale belonged to the Frank B. Saylor Co., Inc.

LOCATION: The Sale will be held at 1505 Jonathan St. (Down from PP&L's yard at Union Blvd. & Plymouth St.) in Allentown, Pa.



CRAWLER & RUBBER TIRED LOADERS, BACKHOES, SWEEPER & GRADERS

Cat 955K Crawler Loader s/n 85J1811 w/ripper, diesel, P.S., pedal steer, good condition w/good u/c; Michigan 35GMAWS Rubber Tired Loader s/n 7WG118, Detroit diesel, shuttle trans., cab, GP bucket, good condition; IHC 3600DA Rubber Tired Loader/Backhoe s/n 000773, diesel, shuttle trans., good condition; IHC 3514 Rubber Tired Loader/Backhoe s/n 2764D, diesel, shuttle trans., cab, very good condition; IHC 2404 Rubber Tired Tractor/Sweeper s/n 1967, gas, front hyd. lift/angle broom, good condition; Galion 160 Series C Motor Grader s/n 01086, Cummins diesel, hyd. moldboard, cab, good condition; Galion 104 Series B Motor Grader s/n 0781, Cummins diesel, hyd. moldboard, scarifier, cab, good condition; Allis Chalmers DD Motor Grader w/hyd. Loader s/n 4018, diesel, hyd. moldboard, scarifier, good condition.

PAVERS, DISTRIBUTORS, ROLLERS & SPREADERS

Barber Greene SA41 Crawler Paver s/n 113, gas, very good condition; Barber Greene SA35 Crawler Paver s/n 299, diesel, good condition; Barber Greene 873 Crawler Paver s/n 156, gas, good condition; Littleford CLR, 1,000 gal. Distributor s/n 51326-BB-2196, 4 cyl., mtd. on '51 GMC S/A Truck, 6 cyl., 4 spd., fair condition; Littleford 101/5B, 540 gal. Distributor s/n 563 Series T mtd. on Trailer; Littleford Tar Pot; Galion 10-12 ton, 3 whl. Roller s/n CRG43099, good condition; Galion TC8-12G, 8-12 ton Tandem Roller s/n 37835, good condition; Galion TC5-8G, 5-8 ton Tandem Roller s/n 51376, good condition; ABG Werke 3-5 ton Vibratory Tandem Roller s/n 125439, diesel, very good condition; Galion TC3-5G, 3-5 ton Tandem Roller s/n 53765, good condition; Buffalo-Springfield KT-7, 3-5 ton Roller s/n 25247, poor condition; (2) Buffalo-Springfield Rollers, poor condition; Jersey 91 Spreader s/n 588, good condition; (4) Temple Chip Spreaders, good condition.

DUMP TRUCKS, TRUCK TRACTOR, LOWBOY, COMP. TRUCK, & OFFICE TRAILER

(3) '74 GMC 7500 S/A Dump Trucks, diesel, (1) 5 spd., 2 spd. rear, (1) 5 spd. & hi-lo trans., (1) auto trans., all in good condition; '73 Ford LN700 Louisville S/A Dump Truck, V-8, 5 spd., 2 spd. rear, good condition; '72 Ford LN700 S/A Dump Truck, V-8, 5 spd., 2 spd. rear, good condition; '77 Mack R600 S/A Truck Tractor, diesel, 5 spd., wet line, good condition; '77 Chev. Pickup Truck, 6 cyl., 4 spd.; Hughes 35 ton Removeable Gooseneck Trailer s/n 14347, good condition; '58 Chev. Viking 60 S/A Truck w/I-R Air Compressor, 6 cyl., 5 spd., 2 spd. rear, poor condition; Atlantic 30' Office/Storage Trailer, garage door, fair condition.

CONTRACTORS TOOLS, RADIOS & MISC.

Paving Breaker; (2) Compactors; Shovels; Picks; Hand Tools; Wire Rope; Barriers; Air Hose; Conduit; Barber Greene Parts; Tires; 55 gal. drum 10 SAE; 2 way Base Station & Mobile Units; (6) File Cabinets; Desks; Copier.

FINANCING: Equipment Finance Inc., Lancaster, Pa. offers financing to all pre-qualified users on equipment (no trucks or trailers) selling for \$10,000 or more on a 25% down, 6 to 36 month basis at prevailing competitive rates. In order to qualify contact Pat Burke at EFI (717) 569-8762 at least seven days prior to the sale.

TERMS: A 25% Deposit in Cash or Guaranteed Funds will be required after each item is sold with complete payment in cash or guaranteed funds only on sale day.

INSPECTION: Mon. & Tues., July 13 & 14 from 8:00 a.m. to 5:00 p.m.

REMOVAL: Thurs. & Fri., July 16 & 17 from 8:00 a.m. to 5:00 p.m.

EVERYTHING SELLS REGARDLESS OF PRICE

Write or call for descriptive brochure

VILSMEIER AUCTION CO., INC.

Route 309, Montgomeryville, Pa. 18936.
Telephone: (215) 699-5833



SATURDAY, JULY 25

Starting at 9 A.M.

Loc.-Danville R.D. 1, Liberty Twp., Pa.
off I 80 Exit 33 to Route 54 East to 642
West to Mooresburg on leg. route 47041
(Follow auction signs).

REAL ESTATE 5 PARCELS TO BE SOLD AT
ABSOLUTE AUCTION
FARM EQUIPMENT - HOUSEHOLD
- TOOLS

Oliver (diesel) 1850-hydra power W/cab-3 pt., Oliver (gas) row crop tractor, J.D. 77 row crop tractor, J.D. (G) row crop tractor, J.D. (GP) wide front tractor, A/C Payloader W/TL 10 bucket, Oliver 3 bottom 18" transport plows, N.H. Haybine 479, N.H. S717 mounted corn head & grass head, Oliver 620 baler W/thrower, J.D. 15A Harvester, J.D. 33 spreader (self unloading), Oliver mounted cultivators, Oliver 15 hole drill, K.W. transport elevator, Oliver 1 row corn picker, Herd seed spreader, (#2440 W/pto), 12' portable hay elevator, 6' hay conditioner, Dion self unloading wagon, Amco self unloading wagon, 4 hay wagons, 4 wheel farm wagon, Allied mixer-chopper 30, Oliver sickle bar mower, N.H. silage blower, Oliver walking plows, cattle box hauler, Vandale silage unloader, Troy-Bilt rototiller, Oliver hay rake, 2 row disc harrows, corn sheller, 4 door 1978 Chrysler sedan (loaded), Forney welder, Atlas metal lathe, T & C riding mower, app. 20 ton press, Oliver tractor engine, belt driven surface grinder, bench grinder, wood tool boxes, platform scales, 4 & 5 drawer file cabinets, 26' ext./ladder, elec. fences, Lennex coal furnace, floor jack, bench vises, tow chains, chain hoist, Shop Smith circular saw, assorted pressure hoses, scrap pile, hay & straw, lard press, steel I beams, etc.

Household - Sears Ref. W/icemaker, Agway chest freezer, Corner cupboard base, E.L. chest of drawers, Duncan Phyfe sofa, 3 pc. East Lake bedroom suite, 6 lid coal, Danville stove, table top victrola, 3 brass sleigh bells, copper kettle, 30" G.E. Range, 5 leg ext. table, drop leaf table meat block, East Lake hall mirror, Maytag Washer & Dryer, bamboo coat tree, Lg. cast bell, 14 gun cabinet, pitcher pump, hand pump, picnic table, milk cans, S.S. Sink, 12'x15' rugs, 9'x12' rugs, quilting frames, plus many unlisted items.

Real Estate to be sold at 9 AM located in Liberty, Twp., Montour County.

Parcel #1 App. 119 acres having two streams of flowing through farm. App. 110 acres are tillable, app. 2 acre woodland. A 4 bedroom 2 story dwelling W/Kitchen, living, dining rooms, 1 1/2 baths. Home has coal hot air heat - good well & septic system. Also a machine shop (block 2 story building) W/butchering area & walk in cooler. 2nd floor has Quonset top for equipment storage, raised corn crib for loading trucks, silos W/unloaders. Pole barn W/feeding conveyor, lg. barn W/cattle shelter & barn yard, etc.

Parcel #2 App. 13 tillable acres.

Parcel #3 App. 9 woodland acres located off Tower Road.

Parcel #4 Has a 2 bedroom Mobile home on block foundation, good well & septic system.

Parcel #5 Has old brick school house built in 1875, renovated to a two bedroom home on lot app. 100'x175'. Well & system - Total electric.

TERMS: Personal property & farm Equipment - Cash. Real Estate - 10% down day of auction balance in thirty days. Buyer pays all transfer taxes. Statements made day of auction regarding real estate take precedences over any previously written material.

Owners

HARRY B. & ELDA E. JAMES

Seller-Trustee-Attorney

John M. Kutchka

Auctioneers-John Autotore 784-3506

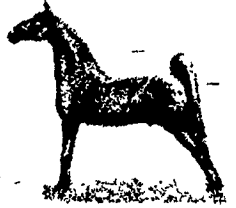
John Jr. 784-0381

Previews to see real estate prior to auction are-Sundays, July 5 & 12 - 1 P.M. Til 4 P.M.

SPECIAL DRIVING HORSE SALE FRIDAY, JULY 24, 1981

Tack at 6:30 P.M.
Horse Sale 7:00 P.M.
Horses Hitched at
12:00 Noon

at
NEW HOLLAND
SALES STABLES, INC.



12 miles East of Lancaster, Pa.
just off Rt. 23, New Holland, Pa.

2 Load Driving and Work Horses consigned by Ward Wright.

1 Load Driving Horses consigned by Don Boring.

1 Load Driving Horses consigned by Ben King.

1 Load Driving Horses consigned by Jones Beiler.

1 Load Driving Horses consigned by Clayton Waterbury.

1 Load Driving Horses consigned by Reuben G. Stoltzfus.

1 Load Driving Horses consigned by Levi S. Stoltzfus.

For more information contact:

Abe Diffenbach, Mgr.
717-354-4341

Norman Kolb
717-397-5538

PUBLIC AUCTION COUNTRY ANTIQUES - HOUSEHOLD GOODS LUMBER - 31' HOLIDAY TRAILER SATURDAY, JULY 25, 1981 8:30 A.M.

To be held on the premises located at RD 1 Annville, South Londonderry Twp., Lebanon County, Penna. Turn north off rt. 322 at east end of Campbelltown at Leed's Corner Store onto rt. 117 known as Forge Road and continue to first road right, being Hinkle Road to farm on right. From rt. 422 in Palmyra turn south onto rt. 117 at Klick Lewis and left onto Hinkle Road.

12 lite Dutch cupboard; 5 drop leaf and ext. tables; S. curve roll top desk; large asst. of plank and other chairs; 6 pc. early marble top bedroom suite; rope beds; Victorian oak love seat; 2 blanket chests; 3 cradles; high chairs; oak sideboard; 5 wood and pot belly stoves; 5 rocking chairs; ice box and kitchen cabinet.

Copper and brass kettles; lots of crocks and jugs; bracket lights; dozens of bone and wooden handle knives, forks, etc.; hanging kerosene lights; candle molds; Bennington spittoon; clocks; pressed and pattern glass; few guns; quilts inc. large star, triangle patch, Emanuel Meily 1834 coverlet and others; tinware and lots of other small unlisted antiques and furniture.

100 PCS. CARNIVAL GLASS 100 PCS.

Some Millersburg and Northwood - lots of purple - asst. variety of patterns - incomplete water sets and punch bowl sets; some rare hard to find pcs. inc. Red Rose 14" platter, pink opalescent banana boat, white 9" dish, 7 pc. green raspberry water set and other glass in orange, green and purple in asst. patterns and styles.

31' HOLIDAY RAMBLER TRAVEL TRAILER with 16' FOLDING AWNING

lots of extras - real nice condition

3 walking plows; over 30 milk cans; 2 hole corn sheller; lots of misc. shed items; butcher equipment inc. kettles; ladles; stirrers; benches; meat hooks; single and double trees; gamble sticks, etc.

New 10'x7' wooden garage door - in box; new lumber inc. 6x6x14 and 8x8x14 oak; 16 - 8 locust posts; used lumber inc. 2-5x5x10 oak; 11-4x6x10 oak; 29-9' hewn logs; 1-6x6x11 oak; 6-6x6x20 oak and lots of other used lumber.

Conditions by:

HARVEY AND NORA KRALL

717-838-2862

Harry H. Bachman - Auctioneer

717-867-1809

Tom Eckenrode - Auctioneer

717-838-4224

Lunch by Farm Women Group 3

NOTE: TERMS CASH - 2 auctions to be conducted at one time - come prepared to buy