

Upper Susquehanna

(Continued from Page C24)

Name	Age	Sex	Weight	Score	Points
Topsy	1-11	301	15,970	4.3	685
Harry L. Snook					
Genevieve	4-7	305	13,428	4.9	662
Joal Ann Farms					
Bugle	7-2	295	20,266	3.6	727
Glorie	6-1	305	20,610	3.9	810
Birch	5-7	305	22,944	3.4	772
C.E. & W.N. Hauck					
42	4-2	305	19,765	3.7	732
Elam Beiler					
Tina	4-1	305	18,964	3.8	724
Febe	3-3	305	18,481	3.8	705
Amos J. Zook					
Ronni	7-3	305	17,963	3.7	671
Star	6-11	305	22,788	3.4	772
Rita	5-9	305	18,175	3.8	694
Vickie	4-11	305	20,817	3.7	769
Ann	3-6	305	16,675	4.0	669
Mark M. Wehr					
77	5-2	305	16,725	4.2	704
54	6-7	305	18,197	3.8	691
J.K. & D.A. Dietrich					
Nan	5-4	305	17,959	4.7	849
Wood Ann Farm, Inc.					
34	4-8	305	24,167	3.5	856
Lover 3	3-0	303	18,762	3.8	715
Jill	2-4	305	19,767	3.8	746
Chris S. Stoltzfus					
53	6-2	305	20,576	3.7	766
6	6-6	305	20,155	3.3	662
Paul R. Smith					
25	7-2	305	17,128	4.4	754
Daniel Z. Stoltzfus					
Beauty	3-10	305	18,202	3.7	666
John M. Stoltzfus					
42	9-4	305	23,519	3.3	769
Maple Lane Farm					
22	7-8	305	19,840	3.8	760
Alvin H. Martin					
4	5-3	305	16,760	4.1	689



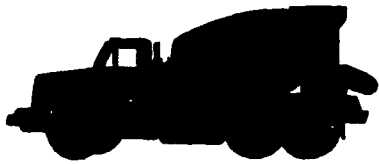
Mifflin Co. DHIA Report

MAY 1981

NAME	BRD	NO. COWS	% COW DAYS IN MILK	LBS. MILK	LBS. FAT
John Y. Bawel	H	16.0	100.0	60.0	2.36
John A. Peachey	H	53.0	103.4	61.6	2.23
J. Loren Yoder	H	25.0	99.1	54.2	2.19
Fred C. Myers	H	23.0	90.1	51.1	2.18
E. Clair Fisher	H	40.0	93.6	59.6	2.18
Mark S. Yoder	H	84.4	95.0	53.2	2.16
Percy S. Yoder	H	77.9	96.9	56.5	2.07
David R. Spicher	H	66.0	96.5	56.6	2.07
Leroy Kauffman	H	52.2	92.5	54.5	2.05
Dry House Farm	H	86.5	92.5	55.2	2.01
Peter Damicantonio	H	9.0	99.5	49.9	2.00
Robert Stayrook	H	23.3	91.1	50.9	1.94
Julia A. King	H	42.0	93.9	48.6	1.92
Louis S. Yoder	H	47.3	90.7	50.6	1.92
David W. Yoder	H	65.5	89.3	55.1	1.92
Floyd J. Yoder	H	29.7	83.9	50.9	1.89
Louis S. Peachey, Jr.	H	54.3	86.6	48.4	1.89
Bradstead Farm	H	36.0	84.4	48.1	1.86
David T. Hostetler	H	40.6	96.3	50.4	1.86
Ezra B. Kanagy	H	27.0	93.5	49.9	1.85
G. Sheldon Peachey	H	40.7	85.5	50.5	1.85
Kore J. Peachey	H	54.0	90.4	48.1	1.84

Peachee Farms	H	66.5	84.3	50.0	1.80
James G. Laughlin	H	41.2	92.7	43.7	1.80
Marvin E. Peachey	H	50.6	89.4	47.1	1.80
Harold Aungst	H	121.2	86.5	45.6	1.78
Mark R. Yoder	H	142.7	89.9	49.2	1.77
Mark R. Yoder	H	139.6	90.7	48.7	1.76
James O. Reed	H	31.0	97.1	48.5	1.75
Sylvanus S. Peachey	H	83.0	89.5	46.7	1.74
Frank J. Hartzler	H	48.5	93.9	48.2	1.74
Gideon L. Yoder	H	37.6	77.0	43.5	1.74
R.M. & Wm. R. Ammon	H	80.7	89.9	46.9	1.73
Gideon L. Yoder	H	40.0	76.4	43.8	1.73
John L. King	H	39.0	90.9	44.9	1.72
John K. Kauffman	H	73.6	91.5	48.3	1.72
Marvin R. Kanagy	H	42.8	88.7	48.3	1.72
Bill & Carol Wingert	H	38.9	84.6	47.5	1.72
James H. Allison	H	39.0	81.9	48.6	1.71
Clarence Wagner	H	83.0	87.1	47.3	1.71
Simon J. Peachey	H	60.0	95.6	44.2	1.70
John B. Peachey	H	70.5	91.3	50.7	1.70
Audrey Gay Rodgers	H	23.1	100.0	47.8	1.70
Roger Parkes	H	59.1	90.0	47.1	1.69
Joshua D. Yoder	H	53.3	87.4	45.6	1.68
John T. Kurtz	H	46.1	99.0	50.6	1.68
Paul H. Yoder	H	52.6	89.1	45.8	1.68
Irvin H. Fleming	H	100.0	92.2	47.5	1.67
Linus E. Sharp	H	84.7	88.1	44.8	1.67
John M. Byler, Jr.	H	38.0	86.8	45.8	1.67
Kore J. Peachey	H	53.0	83.2	46.2	1.66
Clarence Wagenr	H	82.3	87.2	47.9	1.66
J.D. Glick	H	39.0	84.0	44.1	1.64
Peter Damicantonio	H	10.7	81.4	40.0	1.63
Joseph E. Kurtz	H	44.7	92.6	43.7	1.62
Enos J. Yoder	H	70.2	91.3	43.4	1.60
Hollo-Home	H	68.9	86.5	41.1	1.60
John A. Yoder	H	38.0	81.3	43.8	1.59
James A. Slangler	H	35.0	88.0	41.7	1.58
Moses J. Zook	H	39.7	79.9	38.7	1.58
Vernon L. Kauffman	H	41.0	83.1	44.8	1.58
A. Herbert King	H	44.4	93.1	44.7	1.58

(Turn to Page C30)



COCALICO CONCRETE

Ready Mix Concrete For Every Purpose

SERVICE IS OUR BUSINESS

- Quality Controlled Concrete
- Radio Equipped Fleet
- Mix Uniformity thru Automation
- Saturday Morning Delivery

For Prompt Courteous Service Call
(215) 267-7591
Toll Free (800) 422-8107



R. D. 3, DENVER, PA
CRUSHED STONE • READY MIXED CONCRETE • ASPHALT PAVING

SMUCKER BILT

SEMI & LIQUID MANURE SPREADERS
(Positive Auger) (Spinner Design Spreading) (Special Steel Lasts Longer)
(Ground Drive) (Easy Running)
Regular Price \$2695.00

NOW **\$2,500.00**
IF POSITIVE ORDER IS RECEIVED AND 20% DOWN BY AUG. 1st.

SMUCKER-BILT
MANURE PIT ELEVATORS
COMPACT ROTO-BEATERS
MOWER & CRIMPER UNITS
WISCONSIN & ALLIS CHALMERS
POWER UNITS IN STOCK

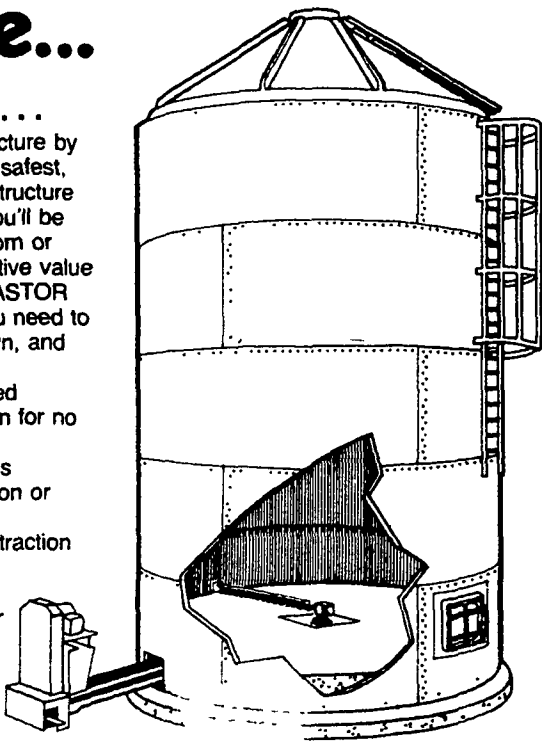
PLATE SHEARING - BRAKE WORK

SMUCKER
WELDING & MANUFACTURING
2110 Rockvale Road, Lanc., PA. 17602
PH: (717) 687-9198

For High Moisture Grain and Forage Storage...

Use **MIRASTOR** ...
With a MIRASTOR structure by MIRACO, you'll get the safest, surest, purest storage structure on the market today. You'll be able to maintain your corn or grain at its highest nutritive value year around. With MIRASTOR you'll get everything you need to keep storage costs down, and profits up ...

- Cool white, condensed fiberglass construction for no heat extremes
- No chemical reactions
- No moisture absorption or ejection from walls
- No expansion or contraction of metals
- No liners or coating replacement or repair
- No drying expenses
- No shrinkage or spoilage
- Easy to erect



With MIRASTOR, You'll Store The Crops The Way Nature Produced Them.

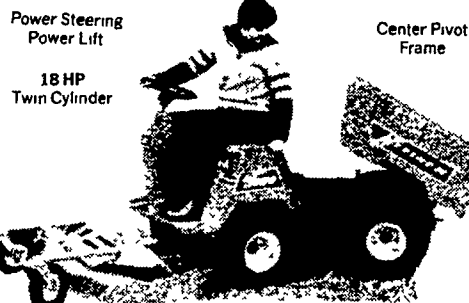


For Information Call:
(717) 776-3129

New for the 80's

The Ultimate Maintenance Tractor
Turf Master by **STEINER**

Hydrostatic - 4 Wheel Drive
High Flotation - Low Pressure Tires



1000 lb. Capacity Hydraulically Operated Dump Bed
Front Mounted Industrial Mowers, Snow-blower, Blade and Other Attachments, on or off in seconds.
Cut your maintenance cost by doing more with one machine.

Built for those who need a little more!
WES STAUFFER SALES & SERVICE
RD 3 Ephrata, PA PH: 717-738-4215
Ephrata Exit New Rt. 222, 1/2 mile West on Rt. 322,
Turn Left onto Pleasant Valley Road

CATTLE SALES

- ★ Dairy Replacements
 - ★ Registered & Grade Holsteins
 - ★ Canadian & NY State Holsteins
 - ★ 300 Holsteins to Choose From
- These cows are accustomed to tie stalls and freestalls
- ★ Heifers of All Ages
 - ★ We Also Buy Entire Herds

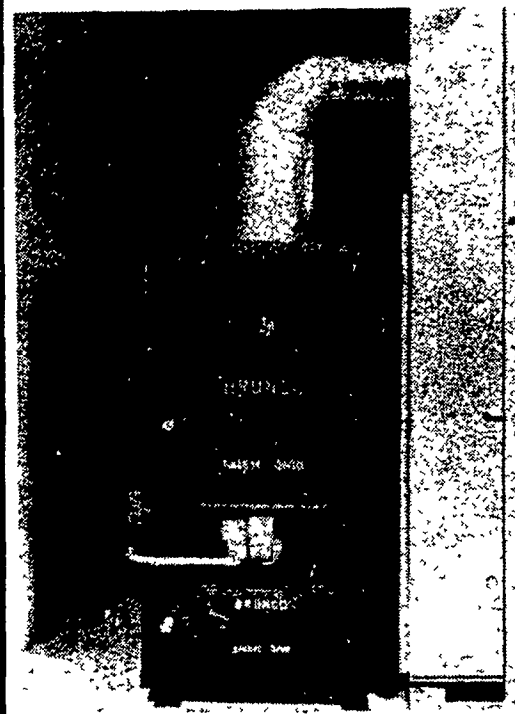
WE ALSO BUY COWS & HEIFERS

Contact:

Charles D. Blaisure
Meshoppen, PA
717-833-2684 or 833-5848

BRUNCO

Supplemental or Independent
Warm Air Furnace
Burns Wood or Coal



Includes the following for easy installation: wall thermostat, 24 volt relay, fan limit control, draft fan and distribution.

Bowman's Stove Shop, Inc.

R.D. 3, Napierville Road Tues., Wed., Sat. 9-5
Ephrata, PA 17522 Thurs., Fri. 9-9
Follow the signs from Closed Mondays
the light at Hinkletown



717-733-4973
Financing Available

