

IH COMBINE HEADQUARTERS IN EASTERN PA.

FEATURING...

AXIAL-FLOW... SIMPLICITY — THE MOST MODERN OF ALL

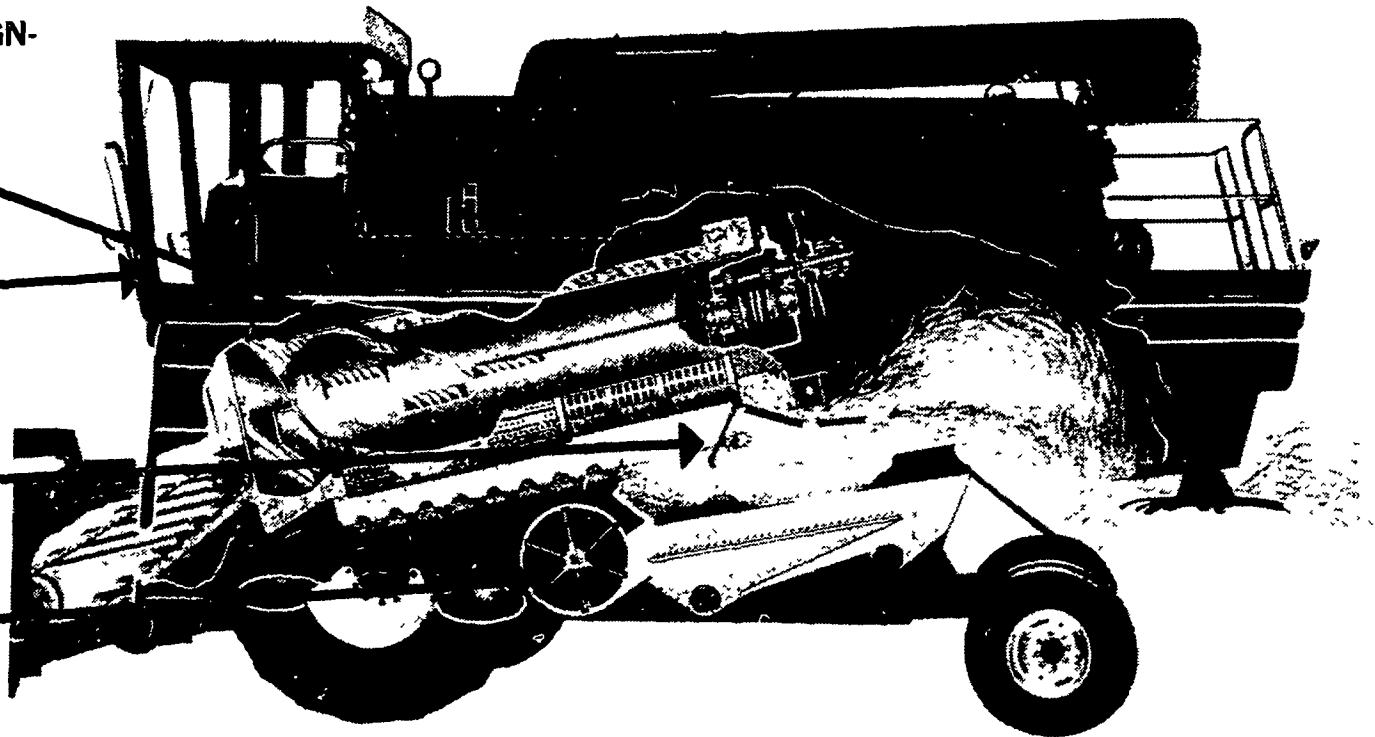
THE FIELD PROVEN IH AXIAL-FLOW COMBINES SAVE MORE GRAIN AND CAUSE LESS CRACKAGE

SIMPLE, SINGLE—ROTOR DESIGN—
Rotor is only moving part in
Threshing-Separating Area. No
STRAW WALKERS!

ROOMY CONTROL CENTER -
Quiet, well-insulated. Handy
finger-tip controls...

LARGE CLEANING AREA -
Augers keep grain from
bunching on Side Hills -
makes an excellent Hillside
combine.

CLEANING FAN with
variable Speed Drive...



**IH HAS THE ONLY
COMPLETE AXIAL-FLOW
COMBINE LINE...**

**C.B. HOOBER & SON, INC
IS THE IH COMBINE
DEALER IN EASTERN
PENNSYLVANIA!**

Model	1480	1460	1440	1420
Horsepower	210	170	135	112
Grain tank capacity	208 bu.	180 bu.	145 bu.	125 bu.
Rigid cutterbar headers	13 to 30'	13 to 24'	13 to 24'	10 to 20'
Flexible cutterbar headers	13 to 22.5'	13 to 22.5'	13 to 22.5'	10 to 17.5'
Corn heads	4 to 8-row	4 to 8-row	4 to 6-row	4-row

COMBINES

- 6252 IH 1440 Combine
- 6239 IH 1460 Combine
- 5742 IH 915 Combine
- 4148 IH 815 Combine
- 5928 IH 815 Combine
- 6542 IH 715 Gas
- 6126 IH 503-C Combine w/430 w/n Cornhead, w/13.5' Grain Platform
- 5536 J.D. 6600 Diesel - Gear Combine
- 6389 J.D. F105 Combine
- 6387 J.D. 95 Combine
- 5413 J.D. 45 Combine w/10' Platform & 235 Cornhead
- 4877 A/C - Gleaner GKS
- 6098 NH 975 Combine
- 5838 NI 704 V6 Uni-System w/717 Combine
- 6396 AC Gleaner MKS

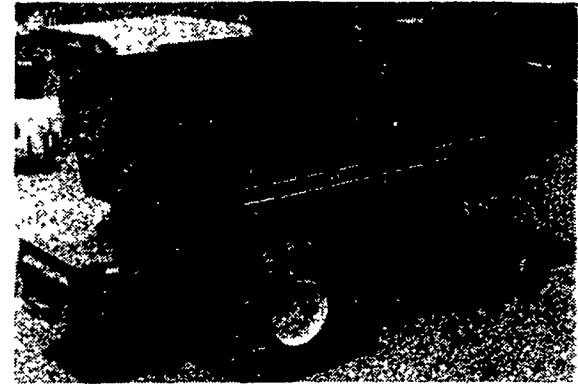
★ **WAIVER OF FINANCE TILL 9-1-81** ★



ALLIS CHALMERS GLEANER M
Corn and Soybean Special, Hydrostatic Transmission, 18.4x30 Drive Tires, 11Lx16 Rear, Air Conditioned, Hillside Blower, 438 Corn Head and 13' Grain Saver.



INTERNATIONAL 915 COMBINE
28Lx26 Drive Tires, 12.4x16 Rear, Necco Grain Saver, 1340 Hours, Monitor.



INTERNATIONAL 1440
23.1x26 Drive Tires, 10.00x16 Rear Tires, Air Conditioned, AM-FM Radio, 351 Hours.

**ALL NEW & USED
PRODUCTS BACKED BY
HOOBER PARTS
& SERVICE**

RADIO CONTROLLED TRUCKS FOR BETTER SERVICE
C.B. HOOBER & SON INC.

INTERCOURSE, PA (717) 768-8231 AUTHORIZED UPS STATION

