

Public Sales Register

Closing Date - Monday, 5:00 P.M.
of each week's publication

MON. AUGUST 10 - 2 P.M. Danville Livestock Market, cattle and hog auction. Located Old Route 11, Danville, PA. Melvin M. Lehman, owner.

MON. AUG. 10 - 9:30 A.M. Consignment Sale. Located at S. Race St., Myerstown, Pa. 17067. Sale held by Wengers Farm Machinery, Inc.

FRI. AUG. 14, 5:30 P.M. Gap Auction. Antiques and Household Goods sold at every auction. Located off Rt. 41, Lancaster Turkey Hill Minit Market, cross RR bridge, Ira Stoltzfus & Son, Auctioneers.

SAT. AUG. 15 - 6:30 P.M. Danville Livestock Market, horse sale located Old Route 11, Danville, PA. Melvin M. Lehman, owner.

SAT. AUG. 15 - Little Kutztown Fire Co. Consignment Sale. 2 miles north of Myerstown, Lebanon Co. Local Auctioneers.

MON. AUGUST 17 - 2 P.M. Danville Livestock Market, cattle and hog auction. Located Old Route 11, Danville, PA. Melvin M. Lehman, owner.

THURS. AUG. 20 - Monthly Cow Sale at the

Melvin Kolb, Inc. Sales Barn, 11342 Cragerstown, Rd., Woodsboro, Md. 21798 Thomas Miller, Sales Manager, Robert Mullendore, Auctioneer.

AUG. 20, 21, & 22 - 9:30 A.M. each day. Martin's Carriage, Sleigh and Antique Auction at Intercourse, PA. Limited to 300 horse drawn vehicles, horse related items, antiques and furniture. Martin Auctioneers, 717-354-7006

THURS. AUG. 20 - 6:45 P.M. Public Sale of Real Estate. Located 1 mile west of Elizabethville, along Rt. 209 in Washington Twp., Dauphin Co., PA. 6 miles east of Millersburg. Charles & William F. Botts Owners. George & Mike Deibert Auctioneers.

FRI. AUG. 21 - 6:30 P.M. Consignment of Feeder Cattle & Feeder Pigs at Keister's Middleburg Auction Sales, Inc. Rt. 522, 3 miles East of Middleburg, 5 miles West of Selingsgrove, Pa. Don & Walt Keister, Owners, Ray Long & Dave Imes Auctioneers

FRI. AUG. 21 - 6 P.M. Arnold's 19th Production Sale of Bred Gilts, Open Gilts, and Boars at the Lebanon Fairgrounds, Lebanon, PA. For info, contact Leon Arnold 717-273-5880

FRI. AUG. 21 - 9:00 A.M. Public Sale of Excellent lot of Farm Equipment, located 1 mile west of

Mercersburg, Franklin Co. PA on Rt. 16 Mrs. W.L. Grossnickle Owner. J. Robert Meyers Auctioneer

FRI. AUG. 21, 5:30 P.M. Gap Auction. Antiques and Household Goods sold at every auction. Located off Rt. 41, Lancaster Turkey Hill Minit Market, cross RR bridge, Ira Stoltzfus & Son, Auctioneers

SAT. AUG. 22 - 10:00 A.M. Public Sale of Tools, Household Goods, Antiques, Located 1 mile NE of Intercourse, 3 miles south of New Holland on corner of N. Hollander Rd. and Ridge Rd. Sale by Abner F. and Katie Z. Beiler Auctioneers - Robert E. Martin and Son 656-7770 and Frank L. Steller 656-8195

MON. AUGUST 24 - 2 P.M. Danville Livestock Market, cattle and hog auction Located Old

Route 11, Danville, PA. Melvin M. Lehman, owner.

WED. AUG. 26 - 11:00 A.M. Pennstar Registered and Grade Holstein cow and heifer sale, 60 registered and Grade Holstein sell at the farm, 1 mile south of Quarryville, PA Carl G. Troop, VMD Owner, Remsburg Sale Service Manager.

FRI. AUG. 28, 5:30 P.M. Gap Auction. Antiques and Household Goods sold at every auction. Located off Rt. 41, Lancaster Turkey Hill Minit Market, cross RR bridge, Ira Stoltzfus & Son, Auctioneers.

SAT. AUG. 29 - 11 A.M. Consignment Horse Sale at the Keister's Middleburg Auction Sales, Inc. Rt. 522, 3 miles East of Middleburg, 5 miles West of Selingsgrove, Pa. Don & Walt Keister,

Owners Ray & Dave Imes Auctioneers
SAT. AUG. 29 - 9:00 A.M. 6th Annual Public Sale by the Bareville Fire Co. 211 E. Main St., Leola, PA. Furniture, Quilts, Tools, Dry Goods Groceries

MON. AUGUST 31 - 2 P.M. Danville Livestock Market, cattle and hog auction Located Old Route 11, Danville, PA. Melvin M. Lehman, owner.

SEPTEMBER

THURS. SEPT. 3 - Monthly Cow Sale at the Melvin Kolb, Inc. Sales Barn, 2220 Dairy Road, Lancaster, Pa. 17601. Dennis Kolb, Sales Manager, Robert Mullendore, Auctioneer.

MON. SEPT. 7 - 2 P.M. Danville Livestock Market, cattle and hog auction. Located Old

Route 11, Danville, PA. Melvin M. Lehman, owner.

MON. SEPT. 7 - Public Sale of Household Goods, Antiques and Farm Equipment. Located along Rt. 124 2 miles west of East Prospect, York Co. Daniel Hoover Owner. Nevin Z. Martin and Lewis B. Groff Auctioneers.



BENEFIT SALE FOR HANEYVILLE FIRE CO.

SATURDAY, JULY 11

10:00 A.M.

Located at the Haneyville Fire House North of Lock Haven, Pa. along Rt. 664. Furniture, dishes & Miscellaneous items. Auctioneers - Ira Stoltzfus & Son Jay Leary

150 GUERNSEYS AT AUCTION LEADER FARMS COMPLETE DISPERSAL THURSDAY — JULY 9, 1981 10:30 A.M.

At the farm, New Freedom, Pa. 17349 (York County, Pa. - 1 mile south of Shrewsbury, 32 miles north of Baltimore)

LEADER FARMS, Owner

JERRY A. KRONE, Manager

Phone 717-235-2739 - Barn 717-235-7627 - Home

SELLING 150 HEAD - 3 BULLS - 74 COWS - 34 BRED HEIFERS - 39 OPEN HEIFERS AND CALVES

T.B. and Bangs Accredited - Vaccinated - Anaplasmosis Tested

Rolling Herd Average: 12,413M 602F Gold Star Breeder for 12 Consecutive Years

Herd Classified 16 Times - Most Recent Classification - 3/5/81 1EX - 38VG - 30D

In Top Ten Herds in 50-75 Cow Division for long time, 4th in 1978, 5th in 1979 M&F. May Test Day - 22 Head over 50# - 3 have milked over 90# per day this lactation, 17 Head are projected over 15,000M & 700F. 58 Cows in milk now average 46# per day of milk at a 4.9 test to Rutters Dairy, York. Many Top Young Cows and Bred Heifers Due In Late Summer and Early Fall. A.I. SIRES INCLUDE: Winston (20), Hollirex (9), Dari Fayvor (9), Maverick (10), Deacon (11), Premier (10), Minnies Choice (5).

— Guernsey Get-Together The Night Before The Sale At The Farm

HIGH PRODUCTION - STRONG COW FAMILIES - DEEP PEDIGREES

AUCTION

BUSINESS LIQUIDATION & FARM EQUIPMENT

Dissolving partnership in - WESCO CAGE EGGS, Inc. of RD#2, Blairsville, PA (Westmoreland Co.) — located 3 miles West of Blairsville on US 22, then 2 miles North of Westinghouse Road:

SATURDAY, JULY 11, 1981

10:00 A.M.

* REAL ESTATE *

Two - 40x288 ft. ALUMINUM CAGE LAYING HOUSES ON 2 ACRES OF LAND - well, septic system, egg rating room, walk-in cooler storage, AQUAMATIC washer & grader, 2 cyl. & 4 cyl. 10KVA generators, HART cup watering system, 4 ZIMMERMAN pit cleaners, power feed carts w/charger, Vacuum pumps w/egg lifter. CAGE CAPACITY - 30,000 birds.

THIS VALUABLE BUSINESS WILL BE OFFERED PIECEMEAL, THEN IN ITS ENTIRETY - ALL BUILDINGS & EQUIPMENT ARE IN GOOD CONDITION.

Real Estate terms: 10% down at time of sale, balance due in 60 days. Sold subject to confirmation. OWNER FINANCING AVAILABLE!!

* TRUCKS * EQUIPMENT *

1970 - INTERNATIONAL Mod. 1890 bulk feed truck, 30,000 GVW w/16 ft. aluminum dump w/cross auger; 1972-FORD 1 ton dump; 1973 FORD pickup; MASSEY FERGUSON 165 diesel tractor (excellent); ALLIS CHALMERS WD with side mount mower, cultivators & 2 bottom plow; hay rake, power tail gate for truck; harrows; chicken debeaker; CARBOLA sprayer; 1 ton feed mixer; hi pressure washer; SEVIN dust - 50%; stock tanks; 6" & 10" augers; 100 hanging feeders; 75 aluminum windows; 50 doors; 250 gal. paint; STOCK TANKS; NEW AIR COMPRESSORS - DAYTON 2 hp, 2 stage; DAYTON 3 hp, 30 gal. tank; DAYTON 1/2 hp; NEW DAYTON 2000 & 3000 watt generators; NEW 8 hp TILLER; OTHER AIR COMPRESSORS; TOOLS; MISC. OF ALL KINDS.

TERMS: Cash or check w/proper ID
Sale Conducted by



ANDERSON

AUCTIONEERS, Inc.

RD2 Box 50

Georgetown, PA. 15043

Harry Anderson, CAI

Phone (412) 573-9533

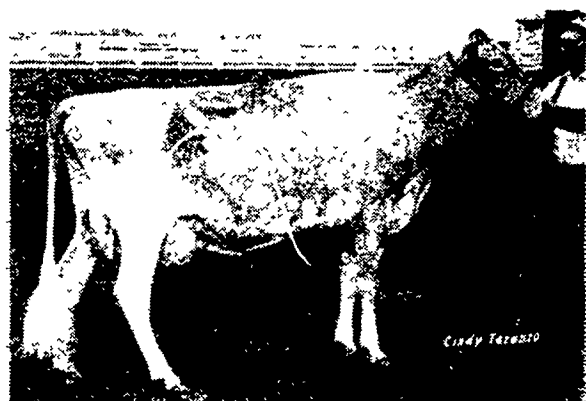


Component Protein Pricing can help America's Dairy Business. By increasing the quality and flavor of milk to the consumer and decreasing the amount of water being marketed, we can increase product sales. NOW is the time to buy Guernseys that produce HIGH SOLID, HIGH PROTEIN MILK. BUY THEM ON THE RISE!



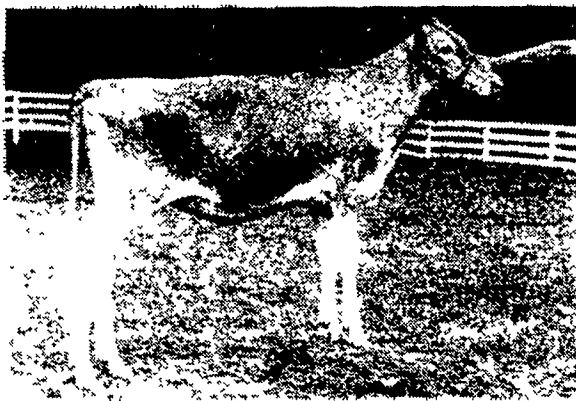
LEADERS PRINCE CAROL - 87

A dau of Lyrene May Rose Prince prop. to 14200M 737F at 4-8 yrs. She sells due to Maverick. Also from this family is LEADERS Winston Crystal, a top bred heifer from a VG dam with over 1000F, due in Sept. to Kellogg Mannies Choice.



LEADERS PRINCE DOVE - 84

15261 4.2 646 2-8 305-2x
Due to Houiseys Dari Fayvor



LEADERS BYRON DUCHESS

Born 8-6-80
Typical of the 6 Byron Daus. selling in the sale



LEADERS DEACON BEA Born 10/12/80

"A flashy heifer for the tanbark"
Sired by Lyrene Wistar Deacon

Directions to the Farm: The farm is located 18 miles south of York on Rt. 111 - 1 mile south of Shrewsbury, Pa. and 2 mile north of the Maryland Line. From the north take I-83 to Shrewsbury Exit - go into Shrewsbury turn left at red light. From south turn off I-83 at Maryland Line Exit Rt. 439 - go east to dead end and turn north to farm. The farm is midway between Baltimore and Harrisburg, Pa. Frequent airline service to either city.

FOR CATALOGUES AND FURTHER INFORMATION CONTACT

THE MERRYMAN COMPANY

John B. Merryman

P.O. Box 566, Sparks, MD. 21152

Ph. 301-771-4624

PA. GUERNSEY BREEDERS ASSOC.

Lee Yost

2497 Lincoln Hwy. E., Lancaster, Pa. 17602

717-299-8955