

# Sale Reports

A public auction of antiques and real estate was held June 27 for the estate of Palmer C. Haas, 6 miles north of Hegins, Schuylkill Co., Pa.

The 4½ acres of open and wooded land, 1½ story frame dwelling and garage was sold for \$37,500.

Other items sold were: Farmall A tractor \$1350, 1971 Ford Galaxie automobile \$1350, Wheelhouse Commando 8 lawn tractor \$925, hanging corner cupboard \$700, 1875 Schuylkill Co. atlas \$100, child's oak tool chest & tools \$50 and wooden carpenter bench & vise \$37.50.

George & Mike Deibert were the auctioneers.

xxx

A public auction of furniture and jewelry was held June 27 for the estate of Josephine B. Harner, 419 W. Orange St., Lancaster, Pa.

Some items sold included: bed spreads \$250 each, Hepplewhite bureau \$790, ladies diamond ring \$1250, early 1900's wedding dress \$235, ladies satin cape \$69, mint plates \$55 each, Sheraton bow front dresser \$700, 6 plank bottom chairs \$210.

Auctioneers were John H. Cooper and Richard Murry.

xxx

A public auction of real estate was held June 27 for the estates of Beulah and Arline Seely, Beach Haven, Pa.

The 7 room brick home on a large lot with hot air heat was sold for \$20,200.

Auctioneers were Dan Nevius, Olen Knecht and Fred Antolick.

xxx

A public auction of farm equipment and antiques was held June 27 for the Joseph W. Kauffman Estate, between Hamburg and Shartlesville, Berks Co., Pa.

Some prices received were: MM super U 302 gas tractor \$2450, 3 pt. weed sprayer \$180, 3 pt. rotary cutter \$300, 3-Bottom 14" plow \$240, M.F. 2-row pt. corn planter \$475, hay bale wagon \$775, M.F. 124 baler \$3200, M.F. grass mower \$380, Gravity hay wagon \$540, N.H. 56 hay rake \$875, Simplicity 7hp garden tractor \$320, Dutch cupboard w/12 panes \$3950, dough box \$65, jelly cupboard \$110, pot belly stove \$80 and 2-lid wood chest \$310.

Sale conducted by Ralph W. Zettlemoyer.

xxx

A public sale of machinery and tools was held June 27 by Korbich Lumber Co., Inc., in the city of Shamokin, at 22 S. Pearl St.

Some prices received were: American 24" planer \$1800, band saw \$500, Greenlee #225 mortising machine \$550, American 16" joiner \$900, American 14"

table saw \$900, 2-Way panel saw \$110, large wood lathe \$330, bench vise & grinder \$80, shaper \$500, Curtis air compressor \$115, grinder & motor \$55,

vertical sander \$40, riding floor sander \$110, 1955 Int. truck \$200, DeWalt radial arm saw \$210, metal scaffolding \$20 to \$35 a section, jack hammers \$25 to \$200, wood by Bin \$2 to \$62.50, cement buggy \$30, cement finishing machine \$170 and cement cutter \$45. Dockey & Dockey

were the auctioneers.

xxx

A public sale of a dairy farm was held June 25 by Isaac B. and Lydia Zook, at Steelville, 7 miles north of Oxford, Chester Co., Pa.

The 50 acre farm with a 2½ story frame house, bank dairy barn, manure pit and concrete stove silo was sold for \$201,000.

Auctioneers were Steve Petersheim and Everett Kreider.

## PA CHESTER WHITE BREEDERS

SHOW 5 p.m.  
SALE 7 p.m.

FRIDAY, JULY 24

Lebanon Co. Fairgrounds, Lebanon PA.  
Selling

- \* Boars
- \* Open Gilts
- \* Bred Gilts
- \* Crossbred Gilts

Judge - Ronald Trostle  
Auctioneer - Harry Bachman

Charles E. Greist  
RD1 Abbottstown, PA 17301  
Eves. 717-624-8421

## LOUDEN HILL FARM 3 DAY COMPLETE DISPERSAL THURSDAY, JULY 16, FRIDAY, JULY 17 SATURDAY, JULY 18

Located on Rt. 29 at Dimock, Pa. Susq. Co. about 18 miles north of Tunkhannock or 6 miles south of Montrose, Pa. Exit 67 off I-81. Arrows.

THURSDAY - 445 HOLSTEINS  
287 MATURE COWS AT 10:30 A.M.

287 mature cows, 35 bred heifers, 39 open heifers, 59 short yearlings, 24 started heifers, 1 black service bull. This dairy is in all stages. 85 reg. cows and 40 heifers eligible to register. Pregnancy examined and interstate charts. Catalogs at ring side.

FRIDAY - 158 HEIFERS  
SHOP TOOLS AND EQUIPMENT

Shop tools and Equipment at 10:00 A.M. 158 Heifers at 12:00 Noon. Lincoln 250 and Craftsman 200 welders, torches, hydraulic press, Craftsman drill press, grinders, Rigid power pipe tools, Coats 1010 tire changer, power washers, drills, steel benches, backpack sprayer, about 40 good electric motors to 7½ h.p., electric appliances and equipment, pipe fittings, implement parts, paint, belts, pulleys, Torpedo heater, nuts, bolts, implement wheels and tires, etc. etc. This is a big auction by itself. Starts at 10:00 A.M. and continues till finished. 158 HEAD HEIFERS AUCTIONED AT 12:00 Noon, separate from Shop and Tool Auction.

SATURDAY - 10:30 A.M. MACHINERY AND  
2 HARVESTORE SILOS 25x90's

1979 White 2-155 4 Wheel drive, Ford County 6 1164 x 4 wheel drive, (3) Ford 5000 Diesels, JD 4020, Case 1816 skid steer loader, Field Queen #7600 SP Chopper 3 row and pickup heads, Hesston 12' and 14' hydro swings, (4) Knight and (2) Gehl unloading boxes and wagons, Gehl box on 1966 White diesel truck, Miller 12' & 10' discs (12' about new), JD #7000 6 row planter with liq. and solid fertilizer, 3 Army 6x6 dump trucks, McConnell forage dump wagon, (4) blowers, (2) Knight tandem axle spreaders, JD SP #55 combine with snapper and grain heads; Gravity box, 12' Brillion roller, Tebben 6 row cultivator, Hanover cattle trailer, Hillsboro dump trailer, tri-axle equip. trailer, all 5th wheel, jaquar pump with Detroit diesel engine and 2", 3", & 4" alum. irrigation pipe, 7 silo unloaders, Vicon hay rake, 3 Uebler feed carts, 300 gal. sprayer, Hesston 2000 chopper with corn and pickup heads, Marathon 50 h.p. elec. power unit, Allied 660 loader, IH grain drill, Ford mower, BMB rotary mower, NH 56 rake, windrow turner, Little Giant 40' elevator, Vermeer 40' bale elevator, Patz 90' material mover, Chevy 1 ton truck with sand spreader and snow plow.

WATCH NEXT WEEKS ISSUE. THIS IS A PARTIAL LISTING.

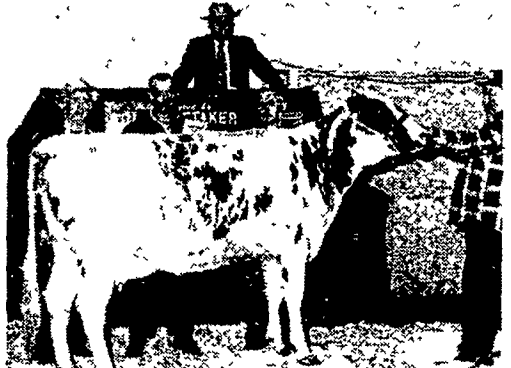
Terms: Cash or approved checks with ID.

Owner  
H. SWARTZ, INC.

Jim Adriance and Sons, Auctioneers  
Montrose, Pa.  
717-278-1574

## Pennsylvania FIRECRACKER SALE WEDNESDAY, JULY 8, 1981 1:00 P.M.

Carlisle Fairgrounds, CARLISLE, PA.  
From Rt. 81, take Route 11 to  
Fairgrounds, east end of town back of  
John Deere dealer.



MAPLE DRIVE JAN R  
3-10 21,775M 3.8% 837  
"Selling as Lot 1"

36 AYRSHIRES SELL  
25 by USDA Proven Sires  
10 COWS - 21 BRED HEIFERS  
2 OPEN HFRS. - 3 HFR. CALVES

Cows have actual records to 21,775 M. 3.8% 837  
F. Dams of Br. Hfrs. have Act. recs. to 18,585M.  
3.5% 644 F. Dams of Hfr. Calves have Act. recs  
to 12104 M. 4.2% 511 F.

(30 day T.B. & Blood Tested - can go anywhere)

FOR FREE CATALOGUE

WRITE OR PHONE: MILT BRUBAKER  
595 Snyder Hill Rd., Lititz, PA. 17543  
Ph: 717-626-5788

## BROWN'S 15th ANNUAL HOLSTEIN HEIFER SALE SATURDAY, AUG. 1, 1981 1 P.M.

Location: 1 mile east of Turbotville,  
Northumberland Co., Pa., 12 miles  
northeast of Danville, just off Rt. 54; 6  
miles off I-80. Watch for Sale Arrow.



50 REGISTERED AND GRADE BRED HEIFERS  
25 REGISTERED; 11 IDENTIFIED GRADES;  
14 GRADES 43 DUE TO FRESHEN AUG.-SEPT.  
Balance soon after, bred to a registered  
sire. Mostly Vacc. 30-day tested, de-  
horned, preg. checked.

Sires represented: Harrisburg Gay Ideal, Simpsons Burkgov Snowman, Vincent View Molly Chief, Arlinda Jet Stream (3), Hill Haven Standout Job (6), Tidy Burke Transmitter, Woodbine Chief-Mohawk, Vigo Charmcross, Will-Tri Frans Legacy, Quality Ultimate, Coldsprings Hamlet, Mowry Prince Valiant, etc.

A Sample of the dams records: 5y 10m 305d 20,075m 4.5% 902f; 6y 2m 305d 20,266m 4.0% 809f; 10y 9m 365d 20,301m 4.0% 808f; 7y 4m 312d 19,263m 4.6% 870f; 8y 5m 358d 18,865m 4.3% 817f; 7y 1m 305d 19,414m 4.1% 787f; 5y 11m 274d 18,671m 3.9% 755f; 3y 11m 305d 18,418m 3.9% 718f; 4y 7m 305d 16,562m 4.5% 738f; 6y 3m 328d 15,522m 4.7% 733f; 6y 4m 315d 17,049m 4.9% 830f; 6y 9m 315d 16,395m 5.0% 819f; 7y 4m 298d 15,551m 4.8% 741f; others over 600 fat.

You are welcome at the Brown's. Heifers with size, condition, dairy quality that you will appreciate. Assembled during the fall months from many top herds.

Trucks available. Catalogs day of sale.

Owners:  
LEWIS & RUTH BROWN

Aucts. & Pedigrees  
Carl & John Diller  
717-464-2233

Good Lunch

## Hepp-Haven

### Complete Herd Dispersal

LOCATION - 7 miles East of Mansfield, Pa., Tioga Co., 8 miles West of Troy, Pa. (Auction signs at Mainesburg, Pa.)

SATURDAY,  
JULY 11, 1981

At 12:30

42 HEAD REGISTERED  
HOLSTEINS SELL 42

4 EX - 7 VG - 9 GP - 3 G

(Registered first calf heifers not fresh when classified in '80, 3 other candidates for VG). 30 milking age animals with RHA June 3, 1981 - 17,553 M, 3.8 T, 675 F. Fresh cows, close springers, balance various stages of lactation. 5 Registered bred heifers due August to December, 4 Registered open heifers, breeding age; 3 Registered started heifer calves.

INTERSTATE TESTED  
CALFHOOD VACCINATED  
PREGNANCY CHECKED

Catalogues mailed on request to  
prospective buyers.

SIRE!!!

7 by Round Oak Rag Apple Elevation, 4 by S-W-D Valiant, 5 by Paclamar Astronaut, 2 by Paclamar Bootmaker, Poverty-Hollow Milestone, Roybrook Starlite, Arlinda Jet Stream, Hanover-Hill Triple Threat-Red, Rippchen Boot-Nick, Harrisburg Gay Ideal and other choice AI sires represented.

\* Foundation cattle with production plus; show winners sell at Hepp-Haven. Don't miss this dispersal. \*

TERMS: Cash or Good Check sale day. (I.D. Requested)

JAMES AND DONNA HEPP, Owners

D. O. Rockwell & Associates, Sale Managers  
Troy, Pa. Phone 717-297-3460

Lunch Available

## AUTOTORE'S AUCTION

WEDNESDAY, JULY 22

Starting at 5 P.M.

Benton R.D. 2 off route 487 North of Benton to Leg. route past Camp Lavigne to Twp. Road 702 East 4 tenth mile (Follow auction signs)

Real Estate & Personal Property of the late Melvin (SAM) Klinger. Farmall A wide front tractor, front mount cultivators, mounted 2 bottom plows, 5' sickle bar mower, 2 sec. harrow, 3-2 wheel wagons, bench grinder, power grind wheel, B&D 7¼" circular saw, ½" drill, B&D sander, Rockwell ½" drill, some primitive tools, bag truck, 14" cut cord wood saw, 14" extra blade, odd lumber, wheelbarrow, home made table saw, shop vac. ETC.

6 painted arrow back plank chairs, 5 oak spindle chairs, oak desk, Eastlake dresser, (w/towel rack), oak 6 leg ext. table, oak dresser, oak chest of drawers, pine chest, Eastlake washstand, Mission tressel table, wood benches, meat benches, Maple desk, walnut buffet, wood & coal stove, 30" Kenmore range, Kerosene lamp, dishes, cooking utensils, etc, etc.

Real estate to be offered at 6:30 P.M.

Located in Sugarloaf Twp. Columbia County, Benton school district. Farm has app. 61 acres w/300' hard road frontage w/34 acres & 27 acres split by road. App. 30 tillable & 25 woodland acres. Good well & septic system. Sml. stream on lower level. Excellent hunting area. Main house has 8 rooms & bath, cellar & attic. Elec. heat w/coal backup. out sheds & lg. barn in good condition. Also a 2 story home used for hunting lodge. Preview dates for Real Estate are Sunday, July 12 & 19 from 1 P.M. till 4 P.M.

Terms - Personal Property - Cash

Real Estate - \$5,000 down day of auction balance in thirty days. Buyer pays all transfer taxes. Statements made day of auction take precedences over any previously written material.

Seller-Executor

ART WENNER

Auctioneers - John Autotore 784-3506  
John Jr. 784-0381