

# farmers visit Lancaster, Dauphin counties



hectares large. In general 50 percent corn, 25 percent potatoes and 25 percent wheat. I keep a few chickens on the farm." Leinjan writes, "I want to be a farmer, but our farm is too small to earn good wages. That's why I have a job in a cooperative factory." A Bruyn is a student who writes, "The village I live in is mostly with fishermen and farmers. The mussel and eel are important for the

in the country, but not on the farm. Jan Willem Kooistra. He writes, "After the army I began to work on the Olau-line in Vlissingen. I operate a ferry-service between Vlissingen, Flushing, and London, near London." Occupations include youth nurse, harbor custom

officer, hydraulics engineer and car dealer.

The car dealer, Piet Joose writes, "After school I went to a special school for car trading and business management. My father owns a Ford dealership in the town of Vlissingen in which I sell the Ford cars together with my brother."

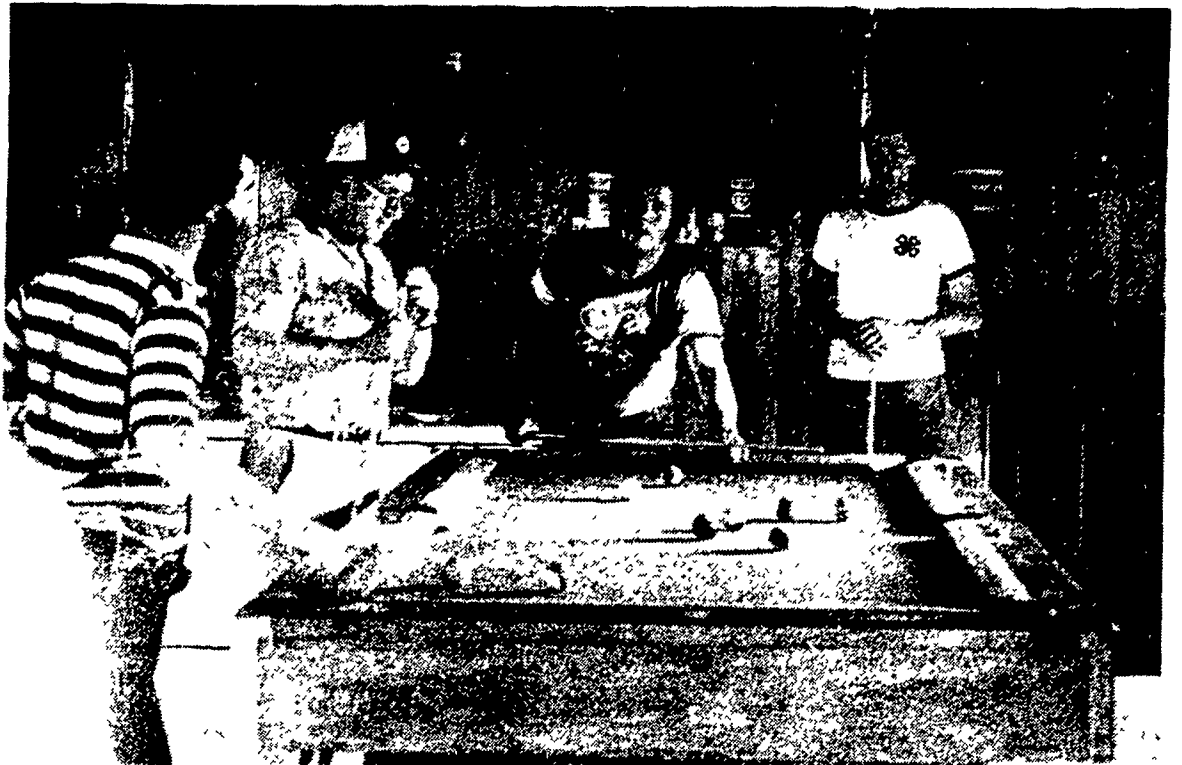
As the occupations differ, so do the interests. The favorite sport is, by far, volleyball. One collects stamps, another rides horses and most say they enjoy music.

Leen van de Polder writes of the most unique interests, "My hobbies are car-crossing, tractor pulling and sea fishing."

According to Tiz Williams,

Dauphin County coordinator, everybody had a good time and everybody was willing to help in some way.

"Because we were all to gather for a picnic Monday night in Lancaster County, we visited Amish country early that day. Our visitors were fascinated with Amish buggies and farms. They saw a water pump that really interested them. As we were watching, the family came outside ready to go somewhere. When they found out our friends were from the Netherlands, they hooked up their horses and their new carriage and took them all for a ride. We've all had a great time," she said. But the learning is not the only



thing shared among the visitors and host families. The 26 presented

red and white carnations to their new families as a way of saying thank you.



Everybody had a good time when the visitors from the Netherlands and their host families got together for a picnic.

## 800 Bobcat SERIES

Liquid Cooled, 1700 lb. Operating Capacity

### COMPARE THE FEATURES:

#### PERFORMANCE

1700 lb. capacity with dump reach up to 36". When you work a Bobcat, you'll feel the power at the wheels for maneuverability and stability throughout full load cycles.

#### DURABILITY

Compare operating weight to load capacity, compare drive chain size, axle thickness, steel, welding, protection for hoses, engines, radiators and the superior Bob-Tach system for attachments. Inside and out Bobcats feature fine tuned engineering.

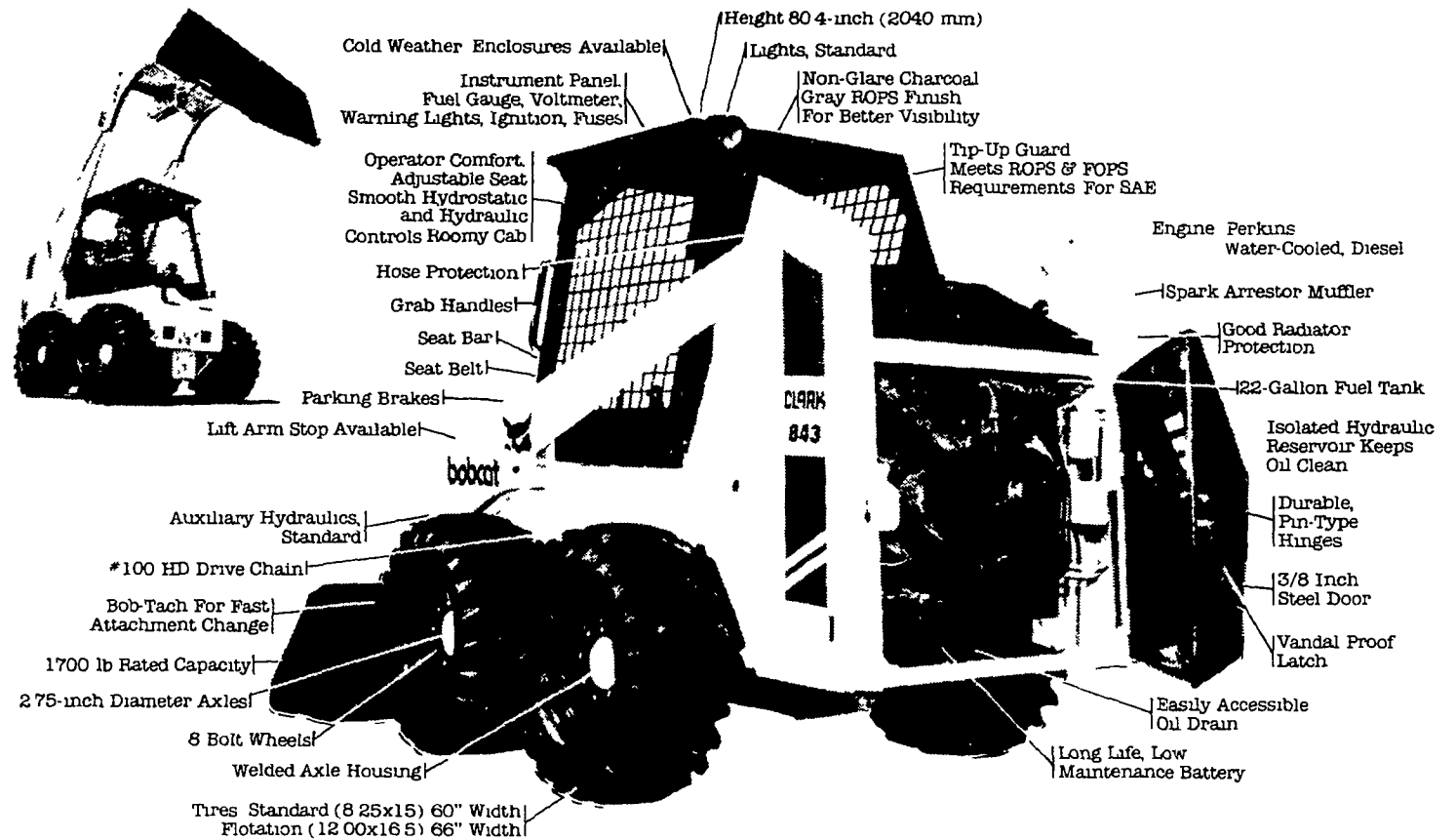
#### SERVICABILITY

Tip up rollover protection structure for easier accessibility to hydrostatic components & steering linkage. 3/8" steel rear door on pin hinges makes routine maintenance a snap, bigger batteries and starters, dual element air cleaners.

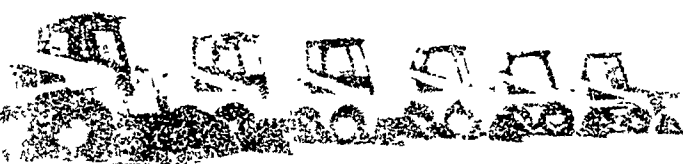
#### SAFETY

Seat bar for additional operator safety, convenience and comfort. Rugged rollover protective structure construction, pedal locks, dual headlights, rear road and work lights, spark arrestor muffler.

#### PRICE



### CLARK BOBCAT DEALERS:



BOBCAT... IT IS Models Up To 3700 Pounds Capacity

Carlisle, PA PETERMAN FARM EQUIPMENT 717-249-5338	Harrisburg, PA HIGHWAY EQUIPMENT & SUPPLY CO. 717-564-3031	Myerstown, PA SWOPE & BASHORE INC. 717-933-4138	Mill Hall, PA DUNKLE & GRIEB 717-726-3115	Tunkhannock, PA BARTRON FARM SUPPLY 717-836-3740
Chambersburg PA CLUGSTON IMPLEMENT INC. 717-263-4103	Honey Grove PA NORMAN D. CLARK & SON INC. 717-734-3687	Palm PA WENTZ FARM SUPPLIES INC. 715-679-7154	Slatington, PA SCAT ENTERPRISES INC. 215-767-1111	Quarryville, PA GRUMELLI'S FARM SERV. 717-736-7218
Drums PA HIGHWAY EQUIPMENT & SUPPLY CO. 717-249-5338	Myerstown, PA HIGHWAY EQUIPMENT & SUPPLY CO. 717-564-3031	Carlisle, PA PETERMAN FARM EQUIPMENT 717-249-5338	Mill Hall, PA DUNKLE & GRIEB 717-726-3115	Tunkhannock, PA BARTRON FARM SUPPLY 717-836-3740