

Dutch young farmers visit Lancaster, Dau

BY DEBBIE KOONTZ

LANCASTER — Lancaster and Dauphin county 4-H'ers and neighbors had the opportunity to learn a little bit 'o Dutch this week as they hosted 26 Dutch Young Farmers Club members visiting in the United States.

Though their schedule included sites from Washington D.C. to Lake Placid, the visitors had a total of eight days to spend with their new families.

The trip is a joint effort between the 4-H's IFYE program here in the United States and their farmers club in the Netherlands. The purpose is to allow young people from both countries to be exposed to another culture and lifestyle.

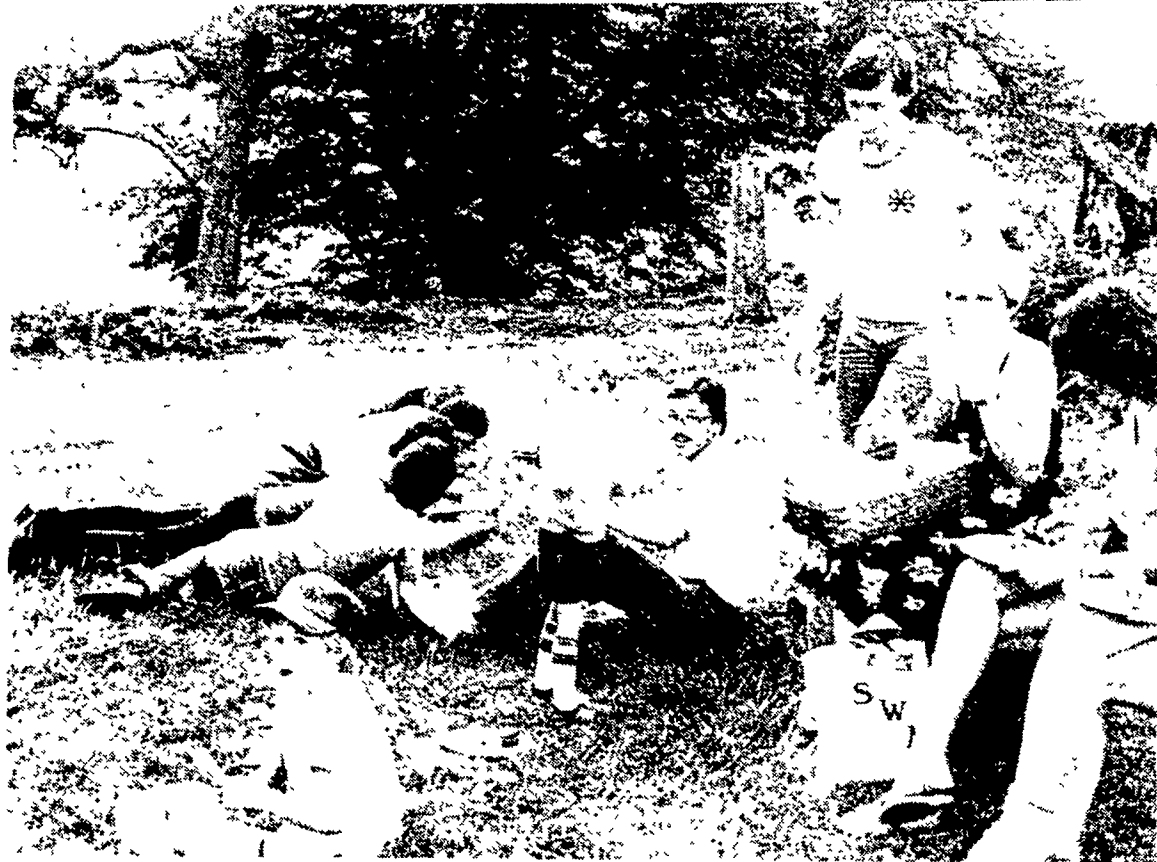
Host families were arranged

through one of the coordinators of the trip, Christine Erb.

Chris supplied a run down of the visitors: "We had 17 staying in Lancaster County and the rest in Dauphin. Their ages ran from 18 to 35 and there were 5 girls and 21 guys."

When asked what seems to have left the best impression with the Dutch visitors, Chris smiled and replied, "They were really impressed with Hershey Park and Chocolate World."

"But they saw a lot of the United States before they came to stay with us," she explained. "They actually arrived on June 20 and stayed in Washington D.C. for a few days. When they leave, they will be going to Niagara Falls,



Toronto, Lake Placid and New York City."

And what about the visitors themselves? They are as varied in occupation and lifestyles as the host families are.

Only 10 find their future in farming, with fruit and dairy farming being the overall emphasis. Crops such as potatoes, sugarbeets, sprouts, cauliflower and winter wheat are the main crops, the members agreed.

One visitor, Leed de Regt, is an agricultural engineering student. When asked to write about himself, he wrote "My holidays are spent on the farm where I like to help with the harvest of wheat, barley, potatoes, onions and sugarbeets. I decided to spend my holidays this year in the United States because I am very anxious to know what life is about in your country."

Another farmer, Adrie Bons from Strijen, Zuid-Holland, wrote, "My father has a crop farm. It is

about 55 hectares large. In general we grow 50 percent corn, 25 percent potatoes and 25 percent sugarbeets. I keep a few chickens and rabbits on the farm."

Teun Kleinjan writes, "I want to be a farmer, but our farm is too small to earn good wages. That's why I have a job in a cooperative sugarbeet factory."

Erik de Bruyn is a student who writes, "The village I live in is filled mostly with fishermen and farmers. The mussel and eel culture are important for the village."

Living in the country, but not on a farm is Jan Willem Kooistra. He writes, "After the army I began to work at the Olau-line in Vlissingen which operates a ferry-service between Vlissingen, Flushing, and Sheerness, near London."

Other occupations include youth worker, nurse for handicapped children, cashier, harbor custom

officer, hydraulics engine car dealer.

The car dealer, Piet writes, "After school I went to a special school for car track business management. I own a Ford dealership in Vlissingen in which I Ford cars together with my brother."

As the occupations differ the interests. The favorite by far, volleyball. One stamps, another rides horses most say they enjoy music.

Leen van de Polder writes most unique interests, "I like car-crossing, pulling and sea fishing."

According to Tiz V



800 B SERIES

Liquid Cooled, COMPARE THE

PERFORMANCE
1700 lb capacity with 36" When you feel the power at maneuverability throughout full load

DURABILITY
Compare operating capacity, compare di thickness, steel, weld hoses, engines, ra superior Bob-Tach tachments Inside feature fine tuned en

SERVICABILITY
Tip up rollover protection easier accessibility components & steel steel rear door on routine maintenance batteries and starter cleaners

SAFETY
Seat bar for additional convenience and rollover protective structure, pedal lock rear road and w arrestor muffler

PRICE

CLARK



BOBCAT... FT 13 Models Up

LEASE IT THROUGH TELMARK AGRI-LEASE

From a Building to a Baler...

Almost any kind, any make, any model of durable equipment or farm machinery, new or used, can be leased through a Telmark Agri-Lease. Telmark, the leasing subsidiary of Agway Inc., is dedicated to serving the agribusiness community.

The highly qualified Telmark staff can provide fast service to meet your leasing requirements so you will be able to take advantage of opportunities as they arise. A Telmark Agri-Lease can improve your cash flow and save your operating capital. You avoid large down payments required with some other forms of financing.

Give us your requirements and we'll give you a proposal covering all the details. Contact your local Telmark office or Telmark, Box 1000, Lancaster, PA 17303.

Agri-Lease